

Converting Colors

Hex(D6A6A6)

Have a look what the booklet for
Hex(D6A6A6) contains.

Hex(D6A6A6)	3
<i>Conversions</i>	4
<i>Details</i>	6
<i>Harmonies</i>	11
<i>Previews</i>	23
<i>Color Blindness Simulation</i>	26
<i>CSS Examples</i>	29

Color

Hex(D6A6A6)

Conversions

Conversions Part 1

Format	Color
Hex	D6A6A6
RGB	214, 166, 166
RGB Percent	84%, 65%, 65%
CMY	0.1608, 0.3490, 0.3490
CMYK	0.00, 0.22, 0.22, 0.16
HSL	0°, 37%, 75%
HSV	0°, 22%, 84%
XYZ	48.2507, 44.3218, 42.0883
YIQ	180.3520, 28.6080, 10.1760

Conversions

Conversions Part 2

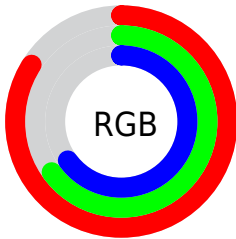
Format	Color
R _Y B	214, 166, 166
Decimal	14067366
CIE Lab	72.44, 17.64, 6.80
CIE LCh	72, 18.908, 21.070
Yxy	44.3218, 0.3583, 0.3291
Android (android.graphics.Color)	4292257446 (0xFFD6A6A6)
YUV	180.3520, -7.0755, 29.5093
Hunter-Lab	66.5746, 12.8644, 9.1192

Details

The Hex color **D6A6A6** is a light color, and the websafe version is hex **CC9999**. A complement of this color would be **A6D6D6**, and the grayscale version is **B4B4B4**.

A 20% lighter version of the original color is **FFDDDD**, and **9E7272** is the 20% darker color. If you saturate the color by 10%, you get **D69191**, and if you desaturate by 10%, it is **D6BBBB**.

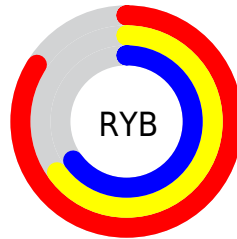
Distribution



Red (84%)

Green (65%)

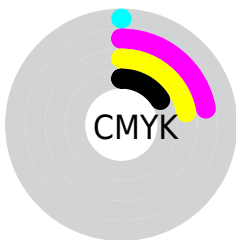
Blue (65%)



Red (84%)

Yellow (65%)

Blue (65%)

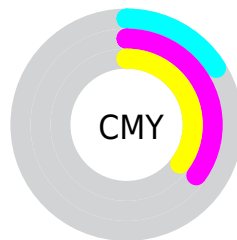


Cyan (0%)

Magenta (22%)

Yellow (22%)

Black (16%)



Cyan (16%)

Magenta (35%)

Yellow (35%)

Brightness & Saturation Gradients

These gradients show how the Hex color D6A6A6 changes by changing the brightness by 10 percent. The first figure shows a shift by +10% for each color and the second figure -10%.

Similar to the brightness gradients but the following saturation gradients show a change of the Hex color D6A6A6 by changing the saturation by 10% instead.



D6A6A6



D6A6A6

FFFFFF



BA8C8C



FFDDDD



9E7272



FFFAFA



84595A



6A4142



512B2C



381518



250000



000000



D6A6A6



D6A6A6

 D69191

 D6BBBB

 D67B7B

 D6D1D1

 D66666

 D6E6E6

 D65050

 D6FCFC

 D63B3B

 D6FFFF

 D62626

 D61010

 D60000

Harmonies

Analogous

The Analogous color harmony consists of three colors that are next to each other on the color wheel.



D1A6B8



D6A6A6



D1A997

Triad

The Triadic color harmony groups three colors that are evenly spaced from another and form a triangle on the color wheel.



D6A6A6



9EB99C



98B5D3

Complementary

The Complementary color scheme is a pair of colors which are on the opposite of each other on the color wheel.



D6A6A6



A6D6D6

Split Complementary

Split-complementary colors differ from the complementary color scheme. The scheme consists of three colors, the original color and two neighbors of the complement color.



87B9CC



D6A6A6



8DBBAC

Square

The Square scheme is like the rectangle color scheme, but the four colors are evenly spaced on the color wheel.



D6A6A6



B2B491



83BCBD



AEAFD2

Rectangle

The Rectangle color scheme consists of four colors that form a rectangle on the color wheel.



D6A6A6



C9AD91



83BCBD



91B6D2

Sweetspot

The Sweet Spot groups the original color and five complimentary colors.



D6A6A6



FFEDED



D6A6D6



807575



000000



808080

Same Dimension

The Same Dimension uses a secret algorithm to generate beautiful new colors.



D6A6A6



FFBABA



D6BEA6



6B6060



AB0000



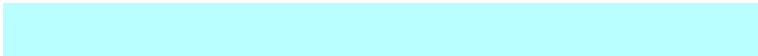
2B0000

Inverse Universe

The Inverse Universe completely reimagines the original color for something new.



A6D6D6



BAFFFF



A6BED6



606B6B



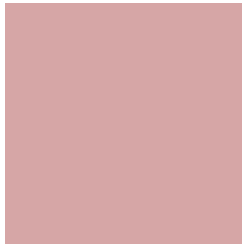
00ABAB



002B2B

Previews

White Background



This preview shows how the Hex color D6A6A6 looks on a white background.

Color Contrast Check

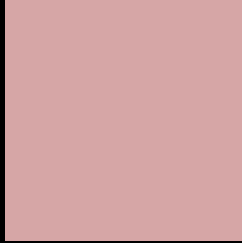
Large Text (above 18pt) WCAG AA × Fail

Any Text WCAG AA × Fail

Large Text (above 18pt) WCAG AAA × Fail

Any Text WCAG AAA × Fail

Black Background



This preview shows how the Hex color D6A6A6 looks on a black background.

Color Contrast Check

Large Text (above 18pt) WCAG AA ✓ Pass

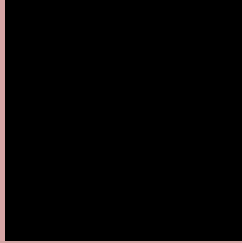
Any Text WCAG AA ✓ Pass

Large Text (above 18pt) WCAG AAA ✓ Pass

Any Text WCAG AAA ✓ Pass

If you want to check with other color combinations, try the [Color Contrast Checker](#).

Hex D6A6A6 Background



This preview shows how black text looks on a background with the Hex color D6A6A6.



This preview shows how white text looks on a background with the Hex color D6A6A6.

Color Blindness Simulation

Color vision deficiency is a very complex topic, and I could not describe the different causes any better than Wikipedia does, so if you want to learn more, you should check out their [article about color blindness](#).

Dichromacy



Original Color
D6A6A6

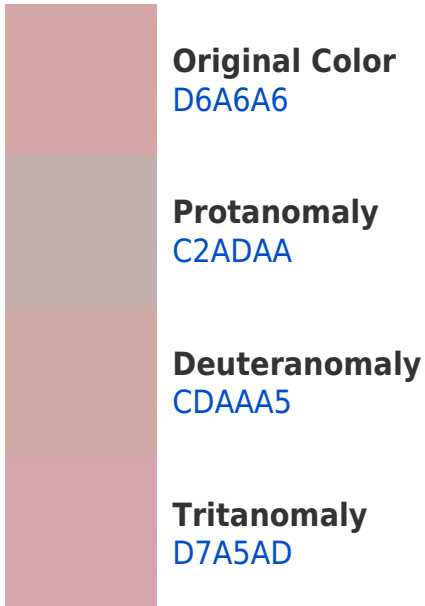
Protanopia
B6B1AC

Deuteranopia
C8ACA5

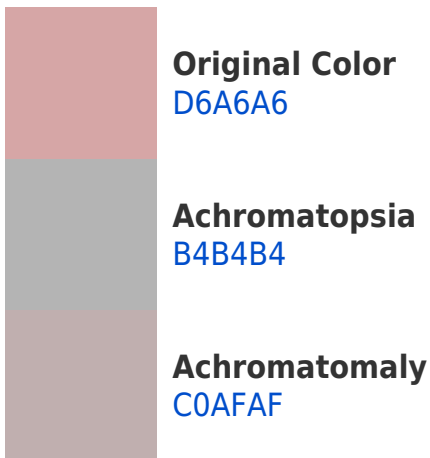


Tritanopia
D7A4B1

Trichromacy



Monochromacy



CSS Examples

Text

The CSS property to change the color of the text to Hex D6A6A6 is called "color". The color property can be set on classes, ids or directly on the HTML element.

This example shows how text in the color #D6A6A6 looks like.

```
.text, #text, p{  
    color:#D6A6A6  
}
```

If you want to add a text shadow in that color use the text-shadow property, you can generate a text shadow directly with our [CSS Text Shadow Generator](#).

Here you see how black text with a 4 pixel #D6A6A6 colored shadow looks like.

```
.shadow{ text-shadow: 4px 4px 2px #D6A6A6
}
```

Border

The CSS property to change the border of an element to Hex D6A6A6 is called "border". The border property can be set on classes, ids or directly on the HTML element.

This example shows the color as border, it can be applied via the CSS property "border" or "border-color".

```
.border, #border, table{ border:4px solid
#D6A6A6 }
```

If only the border color should be changed use the property `border-color`.

```
.border{ border-color:#D6A6A6 }
```

If you want to add a box shadow in that color use:

Here you see how a box with a 4 pixel #D6A6A6 colored shadow looks like.

```
.boxshadow{ -moz-box-shadow:4px 4px 4px  
4px #D6A6A6; -webkit-box-shadow:4px 4px  
4px 4px #D6A6A6; box-shadow:4px 4px 4px  
4px #D6A6A6 }
```

Background

The CSS property to change the background color of an element to Hex D6A6A6 is called "background". The background property can be set on classes, ids or directly on the HTML element.

```
.background, #background, body{  
background:#D6A6A6 }
```

If only the background color should be changed can be used:

```
.background{ background-color:#D6A6A6 }
```

This example shows the color as background, it is applied via the CSS property "background".

To optimize and compress your CSS code, you can use our [online CSS compressor and optimizer](#) based on csstidy. If you want to create a linear or radial gradient as background or border, check our [CSS Gradient Generator](#).

Hey! You found this booklet interesting? Support Converting Colors with the new Membership Option!

The pro membership hides all ads, plus gives you double the colors in the color bucket, and more awesome pro features!

[Learn more, Memberships starting at \\$2.50/m!](#)

**Follow me
on Twitter!**

@ConvertingColor