

# Converting Colors

Hex(D6A7AC)

Have a look what the booklet for  
Hex(D6A7AC) contains.

<b>Hex(D6A7AC)</b> .....	3
<b><i>Conversions</i></b> .....	4
<b><i>Details</i></b> .....	6
<b><i>Harmonies</i></b> .....	11
<b><i>Previews</i></b> .....	23
<b><i>Color Blindness Simulation</i></b> .....	26
<b><i>CSS Examples</i></b> .....	29

# **Color**

**Hex(D6A7AC)**

# Conversions

## Conversions Part 1

Format	Color
Hex	D6A7AC
RGB	214, 167, 172
RGB Percent	84%, 65%, 67%
CMY	0.1608, 0.3451, 0.3255
CMYK	0.00, 0.22, 0.20, 0.16
HSL	354°, 36%, 75%
HSV	354°, 22%, 84%
XYZ	48.9967, 44.9121, 45.1162
YIQ	181.6230, 26.4070, 11.5190

# Conversions

## Conversions Part 2

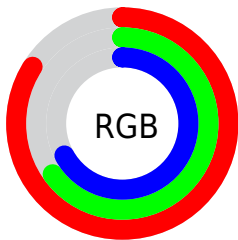
Format	Color
<a href="#">RYB</a>	<a href="#">214, 167, 172</a>
Decimal	<a href="#">14067628</a>
CIELab	<a href="#">72.83, 18.00, 4.06</a>
CIELCh	<a href="#">73, 18.456, 12.704</a>
Yxy	<a href="#">44.9121, 0.3524, 0.3231</a>
Android (android.graphics.Color)	<a href="#">4292257708</a> ( <a href="#">0xFFD6A7AC</a> )
YUV	<a href="#">181.6230, -4.7441, 28.3946</a>
Hunter-Lab	<a href="#">67.0165, 13.2248, 6.9969</a>

# Details

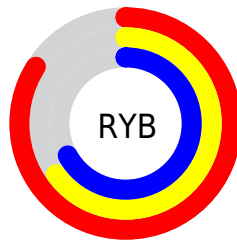
The Hex color **D6A7AC** is a light color, and the websafe version is hex **CC9999**. A complement of this color would be **A7D6D1**, and the grayscale version is **B6B6B6**.

A 20% lighter version of the original color is **FFDEE3**, and **9F7378** is the 20% darker color. If you saturate the color by 10%, you get **D69299**, and if you desaturate by 10%, it is **D6BCBF**.

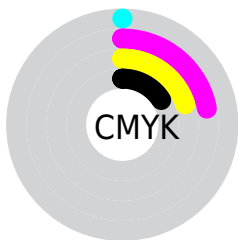
# Distribution



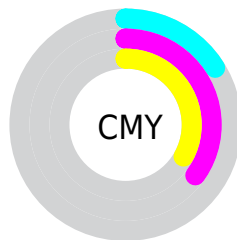
- Red (84%)
- Green (65%)
- Blue (67%)



- Red (84%)
- Yellow (65%)
- Blue (67%)



- Cyan (0%)
- Magenta (22%)
- Yellow (20%)
- Black (16%)



- Cyan (16%)
- Magenta (35%)
- Yellow (33%)

# Brightness & Saturation Gradients

These gradients show how the Hex color D6A7AC changes by changing the brightness by 10 percent. The first figure shows a shift by +10% for each color and the second figure -10%.

Similar to the brightness gradients but the following saturation gradients show a change of the Hex color D6A7AC by changing the saturation by 10% instead.



 D6A7AC

 D6A7AC

FFFFFF

 BA8C91

 FFDEE3

 9F7378

 FFFBFF

 845A5F

 6A4247

 512C31

 39161C

 250001

 000000

 D6A7AC

 D6A7AC

 D69299

 D6BCBF

 D67C86

 D6D2D2

 D66773

 D6E7E5

 D65160

 D6FDF8

 D63C4C

 D6FFFF

 D62739

 D61126

 D60017

# Harmonies

## Analogous

The Analogous color harmony consists of three colors that are next to each other on the color wheel.



CFA8BD



D6A7AC



D4A99D

# Triad

The Triadic color harmony groups three colors that are evenly spaced from another and form a triangle on the color wheel.



D6A7AC



A5B99A



94B7D2

# Complementary

The Complementary color scheme is a pair of colors which are on the opposite of each other on the color wheel.



D6A7AC



A7D6D1

# Split Complementary

Split-complementary colors differ from the complementary color scheme. The scheme consists of three colors, the original color and two neighbors of the complement color.



87BBC9



D6A7AC



93BCA8

# Square

The Square scheme is like the rectangle color scheme, but the four colors are evenly spaced on the color wheel.



D6A7AC



B8B492



87BDB9



A9B2D3

# Rectangle

The Rectangle color scheme consists of four colors that form a rectangle on the color wheel.



D6A7AC



CDAD95



87BDB9



8EB9D0

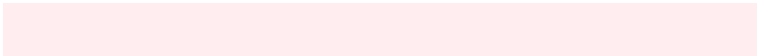


# Sweetspot

The Sweet Spot groups the original color and five complimentary colors.



D6A7AC



FFEDEF



D1A7D6



807576



000000



808080



# Same Dimension

The Same Dimension uses a secret algorithm to generate beautiful new colors.



D6A7AC



FFBDC4



D6B9A7



6B6062



AB0012



2B0005



# Inverse Universe

The Inverse Universe completely reimagines the original color for something new.



D6A7AC



FFBDC4



A7C4D6



6B6062



AB0012

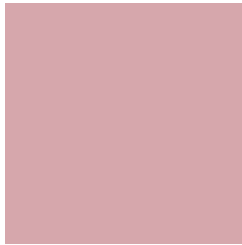


2B0005



# Previews

## White Background



This preview shows how the Hex color D6A7AC looks on a white background.

## Color Contrast Check

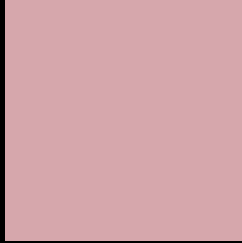
Large Text (above 18pt) WCAG AA × Fail

Any Text WCAG AA × Fail

Large Text (above 18pt) WCAG AAA × Fail

Any Text WCAG AAA × Fail

# Black Background



This preview shows how the Hex color D6A7AC looks on a black background.

## Color Contrast Check

Large Text (above 18pt) WCAG AA ✓ Pass

Any Text WCAG AA ✓ Pass

Large Text (above 18pt) WCAG AAA ✓ Pass

Any Text WCAG AAA ✓ Pass

If you want to check with other color combinations, try the [Color Contrast Checker](#).



## Hex D6A7AC Background



This preview shows how black text looks on a background with the Hex color D6A7AC.

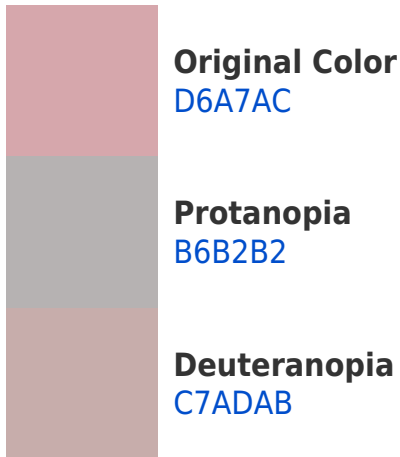


This preview shows how white text looks on a background with the Hex color D6A7AC.

# Color Blindness Simulation

Color vision deficiency is a very complex topic, and I could not describe the different causes any better than Wikipedia does, so if you want to learn more, you should check out their [article about color blindness](#).

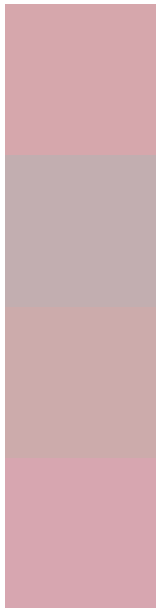
## Dichromacy





**Tritanopia**  
D7A6B3

# Trichromacy



**Original Color**  
D6A7AC

**Protanomaly**  
C2AEB0

**Deuteranomaly**  
CCABAB

**Tritanomaly**  
D7A6B0

# Monochromacy



**Original Color**  
D6A7AC

**Achromatopsia**  
B6B6B6

**Achromatomaly**  
C2B1B2

# CSS Examples

## Text

The CSS property to change the color of the text to Hex D6A7AC is called "color". The color property can be set on classes, ids or directly on the HTML element.

This example shows how text in the color #D6A7AC looks like.

```
.text, #text, p{  
    color:#D6A7AC  
}
```

If you want to add a text shadow in that color use the text-shadow property, you can generate a text shadow directly with our [CSS Text Shadow Generator](#).

Here you see how black text with a 4 pixel #D6A7AC colored shadow looks like.

```
.shadow{ text-shadow: 4px 4px 2px #D6A7AC
}
```

## Border

The CSS property to change the border of an element to Hex D6A7AC is called "border". The border property can be set on classes, ids or directly on the HTML element.

This example shows the color as border, it can be applied via the CSS property "border" or "border-color".

```
.border, #border, table{ border:4px solid
#D6A7AC }
```

If only the border color should be changed use the property `border-color`.

```
.border{ border-color:#D6A7AC }
```

If you want to add a box shadow in that color use:

Here you see how a box with a 4 pixel #D6A7AC colored shadow looks like.

```
.boxshadow{ -moz-box-shadow:4px 4px 4px  
4px #D6A7AC; -webkit-box-shadow:4px 4px  
4px 4px #D6A7AC; box-shadow:4px 4px 4px  
4px #D6A7AC }
```

# Background

The CSS property to change the background color of an element to Hex D6A7AC is called "background". The background property can be set on classes, ids or directly on the HTML element.

```
.background, #background, body{  
background:#D6A7AC }
```

If only the background color should be changed can be used:

```
.background{ background-color:#D6A7AC }
```

This example shows the color as background, it is applied via the CSS property "background".

To optimize and compress your CSS code, you can use our [online CSS compressor and optimizer](#) based on csstidy. If you want to create a linear or radial gradient as background or border, check our [CSS Gradient Generator](#).



Hey! You found this booklet interesting? Support Converting Colors with the new Membership Option!

The pro membership hides all ads, plus gives you double the colors in the color bucket, and more awesome pro features!

**[Learn more, Memberships starting at \\$2.50/m!](#)**

**Follow me  
on Twitter!**

@ConvertingColor