

# Converting Colors

Hex(D6A9AE)

Have a look what the booklet for  
Hex(D6A9AE) contains.

<b>Hex(D6A9AE)</b> .....	3
<b><i>Conversions</i></b> .....	4
<b><i>Details</i></b> .....	6
<b><i>Harmonies</i></b> .....	11
<b><i>Previews</i></b> .....	23
<b><i>Color Blindness Simulation</i></b> .....	26
<b><i>CSS Examples</i></b> .....	29

# **Color**

**Hex(D6A9AE)**

# Conversions

## Conversions Part 1

Format	Color
Hex	D6A9AE
RGB	214, 169, 174
RGB Percent	84%, 66%, 68%
CMY	0.1608, 0.3373, 0.3176
CMYK	0.00, 0.21, 0.19, 0.16
HSL	353°, 35%, 75%
HSV	353°, 21%, 84%
XYZ	49.5595, 45.7281, 46.2587
YIQ	183.0250, 25.2150, 11.0950

# Conversions

## Conversions Part 2

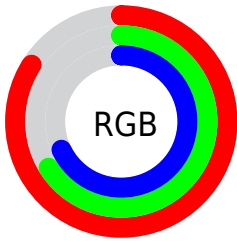
Format	Color
<a href="#">RYB</a>	<a href="#">214, 169, 174</a>
Decimal	<a href="#">14068142</a>
CIELab	<a href="#">73.37, 17.23, 3.73</a>
CIELCh	<a href="#">73, 17.628, 12.224</a>
Yxy	<a href="#">45.7281, 0.3501, 0.3231</a>
Android (android.graphics.Color)	<a href="#">4292258222</a> ( <a href="#">0xFFD6A9AE</a> )
YUV	<a href="#">183.0250, -4.4493, 27.1651</a>
Hunter-Lab	<a href="#">67.6225, 12.4804, 6.7771</a>

# Details

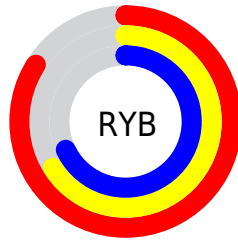
The Hex color **D6A9AE** is a light color, and the websafe version is hex **CC9999**. A complement of this color would be **A9D6D1**, and the grayscale version is **B7B7B7**.

A 20% lighter version of the original color is **FFE0E5**, and **9F757A** is the 20% darker color. If you saturate the color by 10%, you get **D6949B**, and if you desaturate by 10%, it is **D6BEC1**.

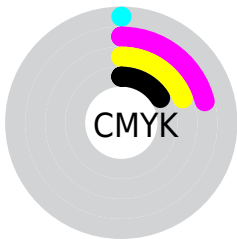
# Distribution



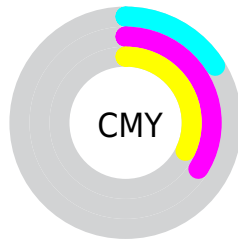
- Red (84%)
- Green (66%)
- Blue (68%)



- Red (84%)
- Yellow (66%)
- Blue (68%)



- Cyan (0%)
- Magenta (21%)
- Yellow (19%)
- Black (16%)



- Cyan (16%)
- Magenta (34%)
- Yellow (32%)

# Brightness & Saturation Gradients

These gradients show how the Hex color D6A9AE changes by changing the brightness by 10 percent. The first figure shows a shift by +10% for each color and the second figure -10%.

Similar to the brightness gradients but the following saturation gradients show a change of the Hex color D6A9AE by changing the saturation by 10% instead.



 D6A9AE

 D6A9AE

FFFFFF

 BA8E93

 FFE0E5

 9F757A

 FFFDFD

 845C61

 6A4449

 512D33

 39181E

 250004

 000000

 D6A9AE

 D6A9AE

 D6949B

 D6BEC1

 D67E88

 D6D4D4

 D66975

 D6E9E7

 D65362

 D6FFFA

 D63E4F

 D6FFFF

 D6293C

 D61329

 D60018

# Harmonies

## Analogous

The Analogous color harmony consists of three colors that are next to each other on the color wheel.



CFAABE



D6A9AE



D4AB9F

# Triad

The Triadic color harmony groups three colors that are evenly spaced from another and form a triangle on the color wheel.



D6A9AE



A8BA9C



97B9D2

# Complementary

The Complementary color scheme is a pair of colors which are on the opposite of each other on the color wheel.



D6A9AE



A9D6D1

# Split Complementary

Split-complementary colors differ from the complementary color scheme. The scheme consists of three colors, the original color and two neighbors of the complement color.



8BBCC9



D6A9AE



96BDAA

# Square

The Square scheme is like the rectangle color scheme, but the four colors are evenly spaced on the color wheel.



D6A9AE



BAB595



8BBEBA



ABB3D4

# Rectangle

The Rectangle color scheme consists of four colors that form a rectangle on the color wheel.



D6A9AE



CEAE98



8BBEBA



92BAD0



# Sweetspot

The Sweet Spot groups the original color and five complimentary colors.



D6A9AE



FFF0F1



D1A9D6



807778



000000



808080



# Same Dimension

The Same Dimension uses a secret algorithm to generate beautiful new colors.



D6A9AE



FFBFC6



D6BAA9



6B6062



AB0013



2B0005



# Inverse Universe

The Inverse Universe completely reimagines the original color for something new.



D6A9AE



FFBFC6



A9C5D6



6B6062



AB0013

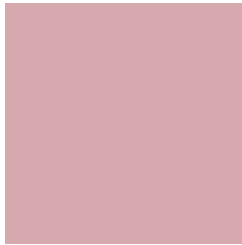


2B0005



# Previews

## White Background



This preview shows how the Hex color D6A9AE looks on a white background.

## Color Contrast Check

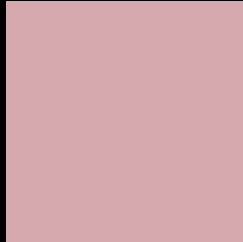
Large Text (above 18pt) WCAG AA × Fail

Any Text WCAG AA × Fail

Large Text (above 18pt) WCAG AAA × Fail

Any Text WCAG AAA × Fail

# Black Background



This preview shows how the Hex color D6A9AE looks on a black background.

## Color Contrast Check

Large Text (above 18pt) WCAG AA ✓ Pass

Any Text WCAG AA ✓ Pass

Large Text (above 18pt) WCAG AAA ✓ Pass

Any Text WCAG AAA ✓ Pass

If you want to check with other color combinations, try the [Color Contrast Checker](#).



## Hex D6A9AE Background



This preview shows how black text looks on a background with the Hex color D6A9AE.

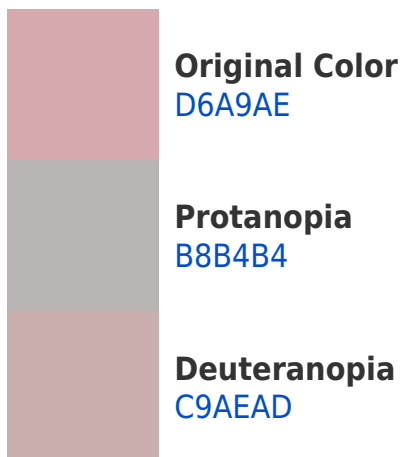


This preview shows how white text looks on a background with the Hex color D6A9AE.

# Color Blindness Simulation

Color vision deficiency is a very complex topic, and I could not describe the different causes any better than Wikipedia does, so if you want to learn more, you should check out their [article about color blindness](#).

## Dichromacy





**Tritanopia**  
D7A8B5

# Trichromacy



**Original Color**  
D6A9AE

**Protanomaly**  
C3B0B2

**Deuteranomaly**  
CEACAD

**Tritanomaly**  
D7A8B2

# Monochromacy



**Original Color**  
D6A9AE

**Achromatopsia**  
B7B7B7

**Achromatomaly**  
C2B2B4

# CSS Examples

## Text

The CSS property to change the color of the text to Hex D6A9AE is called "color". The color property can be set on classes, ids or directly on the HTML element.

This example shows how text in the color #D6A9AE looks like.

```
.text, #text, p{  
    color:#D6A9AE  
}
```

If you want to add a text shadow in that color use the text-shadow property, you can generate a text shadow directly with our [CSS Text Shadow Generator](#).

Here you see how black text with a 4 pixel #D6A9AE colored shadow looks like.

```
.shadow{ text-shadow: 4px 4px 2px #D6A9AE
}
```

## Border

The CSS property to change the border of an element to Hex D6A9AE is called "border". The border property can be set on classes, ids or directly on the HTML element.

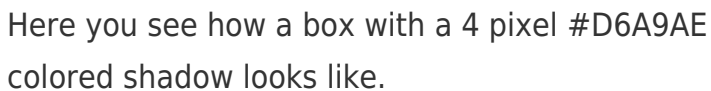
This example shows the color as border, it can be applied via the CSS property "border" or "border-color".

```
.border, #border, table{ border:4px solid
#D6A9AE }
```

If only the border color should be changed use the property `border-color`.

```
.border{ border-color:#D6A9AE }
```

If you want to add a box shadow in that color use:



Here you see how a box with a 4 pixel #D6A9AE colored shadow looks like.

```
.boxshadow{ -moz-box-shadow:4px 4px 4px  
4px #D6A9AE; -webkit-box-shadow:4px 4px  
4px 4px #D6A9AE; box-shadow:4px 4px 4px  
4px #D6A9AE }
```

# Background

The CSS property to change the background color of an element to Hex D6A9AE is called "background". The background property can be set on classes, ids or directly on the HTML element.

```
.background, #background, body{  
background:#D6A9AE }
```

If only the background color should be changed can be used:

```
.background{ background-color:#D6A9AE }
```

This example shows the color as background, it is applied via the CSS property "background".

To optimize and compress your CSS code, you can use our [online CSS compressor and optimizer](#) based on csstidy. If you want to create a linear or radial gradient as background or border, check our [CSS Gradient Generator](#).



Hey! You found this booklet interesting? Support Converting Colors with the new Membership Option!

The pro membership hides all ads, plus gives you double the colors in the color bucket, and more awesome pro features!

**[Learn more, Memberships starting at \\$2.50/m!](#)**

**Follow me  
on Twitter!**

@ConvertingColor