

# Converting Colors

Hex(D6AAB7)

Have a look what the booklet for  
Hex(D6AAB7) contains.

<b>Hex(D6AAB7)</b> .....	3
<i><b>Conversions</b></i> .....	4
<i><b>Details</b></i> .....	6
<i><b>Harmonies</b></i> .....	11
<i><b>Previews</b></i> .....	23
<i><b>Color Blindness Simulation</b></i> .....	26
<i><b>CSS Examples</b></i> .....	29

# **Color**

**Hex(D6AAB7)**

# Conversions

## Conversions Part 1

Format	Color
Hex	D6AAB7
RGB	214, 170, 183
RGB Percent	84%, 67%, 72%
CMY	0.1608, 0.3333, 0.2824
CMYK	0.00, 0.21, 0.14, 0.16
HSL	342°, 35%, 75%
HSV	342°, 21%, 84%
XYZ	50.6535, 46.4645, 51.0986
YIQ	184.6380, 22.0510, 13.3710

# Conversions

## Conversions Part 2

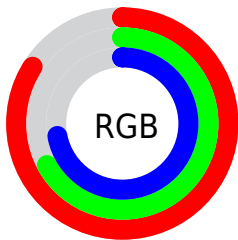
Format	Color
R <sub>Y</sub> B	214, 170, 183
Decimal	14068407
CIE Lab	73.85, 18.11, -0.52
CIE LCh	74, 18.119, 358.370
Yxy	46.4645, 0.3418, 0.3135
Android (android.graphics.Color)	4292258487 (0xFFD6AAB7)
YUV	184.6380, -0.8075, 25.7505
Hunter-Lab	68.1649, 13.3554, 3.2697

# Details

The Hex color **D6AAB7** is a light color, and the websafe version is hex **CC9999**. A complement of this color would be **AAD6C9**, and the grayscale version is **B9B9B9**.

A 20% lighter version of the original color is **FFE1EF**, and **9F7682** is the 20% darker color. If you saturate the color by 10%, you get **D695A8**, and if you desaturate by 10%, it is **D6BFC6**.

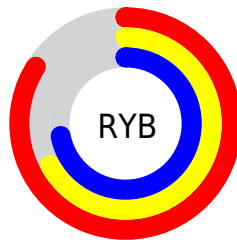
# Distribution



Red (84%)

Green (67%)

Blue (72%)



Red (84%)

Yellow (67%)

Blue (72%)

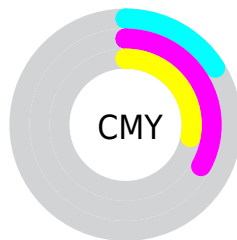


Cyan (0%)

Magenta (21%)

Yellow (14%)

Black (16%)



Cyan (16%)

Magenta (33%)

Yellow (28%)

# Brightness & Saturation Gradients

These gradients show how the Hex color D6AAB7 changes by changing the brightness by 10 percent. The first figure shows a shift by +10% for each color and the second figure -10%.

Similar to the brightness gradients but the following saturation gradients show a change of the Hex color D6AAB7 by changing the saturation by 10% instead.



 D6AAB7

 D6AAB7

FFFFFF

 BA8F9C

 FFE1EF

 9F7682

FFFEFF

 845D69

 6B4551

 522E3A

 3A1924

 25000F

 000000

 D6AAB7

 D6AAB7

 D695A8

 D6BFC6

 D67F99

 D6D5D5

 D66A8A

 D6EAE4

 D6547B

 D6FFF3

 D63F6C

 D6FFFF

 D62A5D

 D6144D

 D6003F

# Harmonies

## Analogous

The Analogous color harmony consists of three colors that are next to each other on the color wheel.



CAADC7



D6AAB7



D8ABA6

# Triad

The Triadic color harmony groups three colors that are evenly spaced from another and form a triangle on the color wheel.



D6AAB7



B1B998



90BCD1

# Complementary

The Complementary color scheme is a pair of colors which are on the opposite of each other on the color wheel.



D6AAB7



AAD6C9

# Split Complementary

Split-complementary colors differ from the complementary color scheme. The scheme consists of three colors, the original color and two neighbors of the complement color.



89BFC5



D6AAB7



9EBDA4

# Square

The Square scheme is like the rectangle color scheme, but the four colors are evenly spaced on the color wheel.



D6AAB7



C4B494



8FBFB4



A2B7D6

# Rectangle

The Rectangle color scheme consists of four colors that form a rectangle on the color wheel.



D6AAB7



D5AD9D



8FBFB4



8CBDCE



# Sweetspot

The Sweet Spot groups the original color and five complimentary colors.



D6AAB7



FFF0F4



C9AAD6



807779



000000



808080



# Same Dimension

The Same Dimension uses a secret algorithm to generate beautiful new colors.



D6AAB7



FFBFD2



D6B3AA



6B6064



AB0032



2B000D



# Inverse Universe

The Inverse Universe completely reimagines the original color for something new.



D6AAB7



FFBFD2



AACDD6



6B6064



AB0032

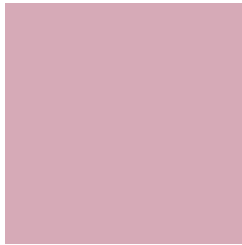


2B000D



# Previews

## White Background



This preview shows how the Hex color D6AAB7 looks on a white background.

## Color Contrast Check

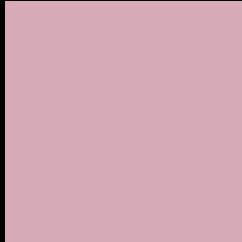
Large Text (above 18pt) WCAG AA × Fail

Any Text WCAG AA × Fail

Large Text (above 18pt) WCAG AAA × Fail

Any Text WCAG AAA × Fail

# Black Background



This preview shows how the Hex color D6AAB7 looks on a black background.

## Color Contrast Check

Large Text (above 18pt) WCAG AA ✓ Pass

Any Text WCAG AA ✓ Pass

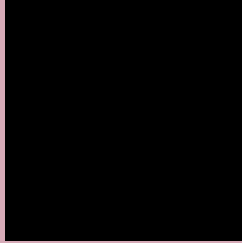
Large Text (above 18pt) WCAG AAA ✓ Pass

Any Text WCAG AAA ✓ Pass

If you want to check with other color combinations, try the [Color Contrast Checker](#).



## Hex D6AAB7 Background



This preview shows how black text looks on a background with the Hex color D6AAB7.



This preview shows how white text looks on a background with the Hex color D6AAB7.

# Color Blindness Simulation

Color vision deficiency is a very complex topic, and I could not describe the different causes any better than Wikipedia does, so if you want to learn more, you should check out their [article about color blindness](#).

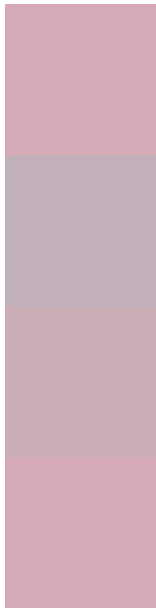
## Dichromacy





**Tritanopia**  
D6AAB7

# Trichromacy



**Original Color**  
D6AAB7

**Protanomaly**  
C2B1BB

**Deuteranomaly**  
CCAEB6

**Tritanomaly**  
D6AAB7

# Monochromacy



**Original Color**  
D6AAB7

**Achromatopsia**  
B9B9B9

**Achromatomaly**  
C4B4B8

# CSS Examples

## Text

The CSS property to change the color of the text to Hex D6AAB7 is called "color". The color property can be set on classes, ids or directly on the HTML element.

This example shows how text in the color #D6AAB7 looks like.

```
.text, #text, p{  
    color:#D6AAB7  
}
```

If you want to add a text shadow in that color use the text-shadow property, you can generate a text shadow directly with our [CSS Text Shadow Generator](#).

Here you see how black text with a 4 pixel #D6AAB7 colored shadow looks like.

```
.shadow{ text-shadow: 4px 4px 2px #D6AAB7  
}
```

## Border

The CSS property to change the border of an element to Hex D6AAB7 is called "border". The border property can be set on classes, ids or directly on the HTML element.

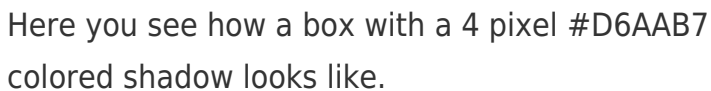
This example shows the color as border, it can be applied via the CSS property "border" or "border-color".

```
.border, #border, table{ border:4px solid  
#D6AAB7 }
```

If only the border color should be changed use the property `border-color`.

```
.border{ border-color:#D6AAB7 }
```

If you want to add a box shadow in that color use:



Here you see how a box with a 4 pixel #D6AAB7 colored shadow looks like.

```
.boxshadow{ -moz-box-shadow:4px 4px 4px  
4px #D6AAB7; -webkit-box-shadow:4px 4px  
4px 4px #D6AAB7; box-shadow:4px 4px 4px  
4px #D6AAB7 }
```

# Background

The CSS property to change the background color of an element to Hex D6AAB7 is called "background". The background property can be set on classes, ids or directly on the HTML element.

```
.background, #background, body{  
background:#D6AAB7 }
```

If only the background color should be changed can be used:

```
.background{ background-color:#D6AAB7 }
```

This example shows the color as background, it is applied via the CSS property "background".

To optimize and compress your CSS code, you can use our [online CSS compressor and optimizer](#) based on csstidy. If you want to create a linear or radial gradient as background or border, check our [CSS Gradient Generator](#).



Hey! You found this booklet interesting? Support Converting Colors with the new Membership Option!

The pro membership hides all ads, plus gives you double the colors in the color bucket, and more awesome pro features!

**[Learn more, Memberships starting at \\$2.50/m!](#)**

**Follow me  
on Twitter!**

@ConvertingColor