

Converting Colors

Hex(D6ACB2)

Have a look what the booklet for
Hex(D6ACB2) contains.

Hex(D6ACB2)	3
<i>Conversions</i>	4
<i>Details</i>	6
<i>Harmonies</i>	11
<i>Previews</i>	23
<i>Color Blindness Simulation</i>	26
<i>CSS Examples</i>	29

Color

Hex(D6ACB2)

Conversions

Conversions Part 1

Format	Color
Hex	D6ACB2
RGB	214, 172, 178
RGB Percent	84%, 67%, 70%
CMY	0.1608, 0.3255, 0.3020
CMYK	0.00, 0.20, 0.17, 0.16
HSL	351°, 34%, 76%
HSV	351°, 20%, 84%
XYZ	50.5200, 47.0155, 48.5317
YIQ	185.2420, 23.1060, 10.7700

Conversions

Conversions Part 2

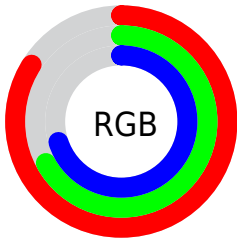
Format	Color
RYB	214, 172, 178
Decimal	14068914
CIELab	74.20, 16.23, 2.74
CIELCh	74, 16.460, 9.589
Yxy	47.0155, 0.3459, 0.3219
Android (android.graphics.Color)	4292258994 (0xFFD6ACB2)
YUV	185.2420, -3.5703, 25.2208
Hunter-Lab	68.5679, 11.5228, 6.0326

Details

The Hex color **D6ACB2** is a light color, and the websafe version is hex **CC9999**. A complement of this color would be **ACD6D0**, and the grayscale version is **B9B9B9**.

A 20% lighter version of the original color is **FFE4EA**, and **9F787D** is the 20% darker color. If you saturate the color by 10%, you get **D697A0**, and if you desaturate by 10%, it is **D6C1C4**.

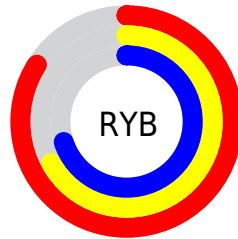
Distribution



Red (84%)

Green (67%)

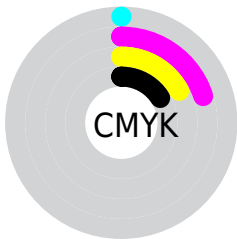
Blue (70%)



Red (84%)

Yellow (67%)

Blue (70%)

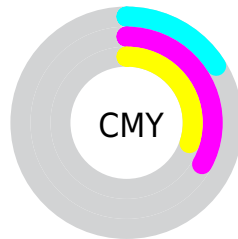


Cyan (0%)

Magenta (20%)

Yellow (17%)

Black (16%)



Cyan (16%)

Magenta (33%)

Yellow (30%)

Brightness & Saturation Gradients

These gradients show how the Hex color D6ACB2 changes by changing the brightness by 10 percent. The first figure shows a shift by +10% for each color and the second figure -10%.

Similar to the brightness gradients but the following saturation gradients show a change of the Hex color D6ACB2 by changing the saturation by 10% instead.

 D6ACB2

 D6ACB2

FFFFFF

 BA9197

 FFE4EA

 9F787D

 845F65

 6B474D

 523036

 3A1B21

 250209

 000000

 D6ACB2

 D6ACB2

 D697A0

 D6C1C4

 D6818D

 D6D7D7

 D66C7B

 D6ECE9

 D65669

 D6FFFB

 D64156

 D6FFFF

 D62C44

 D61632

 D6011F

 D6001F

Harmonies

Analogous

The Analogous color harmony consists of three colors that are next to each other on the color wheel.



CEADC1



D6ACB2



D5AEA4

Triad

The Triadic color harmony groups three colors that are evenly spaced from another and form a triangle on the color wheel.



D6ACB2



ACBB9F



9ABBD2

Complementary

The Complementary color scheme is a pair of colors which are on the opposite of each other on the color wheel.



D6ACB2



ACD6D0

Split Complementary

Split-complementary colors differ from the complementary color scheme. The scheme consists of three colors, the original color and two neighbors of the complement color.



90BEC9



D6ACB2



9CBEAB

Square

The Square scheme is like the rectangle color scheme, but the four colors are evenly spaced on the color wheel.



D6ACB2



BDB799



91BFBB



ACB6D4

Rectangle

The Rectangle color scheme consists of four colors that form a rectangle on the color wheel.



D6ACB2



D0B09D



91BFBB



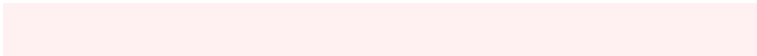
95BCD0

Sweetspot

The Sweet Spot groups the original color and five complimentary colors.



D6ACB2



FFF0F2



D0ACD6



807778



000000



808080

Same Dimension

The Same Dimension uses a secret algorithm to generate beautiful new colors.



D6ACB2



FFC2CB



D6BBAC



6B6062



AB0018



2B0006

Inverse Universe

The Inverse Universe completely reimagines the original color for something new.



D6ACB2



FFC2CB



ACC7D6



6B6062



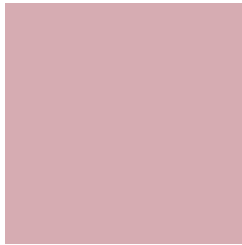
AB0018



2B0006

Previews

White Background



This preview shows how the Hex color D6ACB2 looks on a white background.

Color Contrast Check

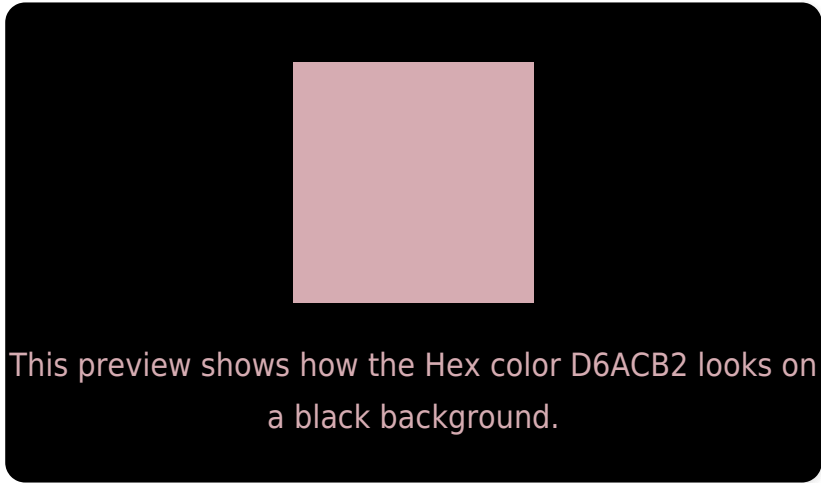
Large Text (above 18pt) WCAG AA × Fail

Any Text WCAG AA × Fail

Large Text (above 18pt) WCAG AAA × Fail

Any Text WCAG AAA × Fail

Black Background



Color Contrast Check

Large Text (above 18pt) WCAG AA ✓ Pass

Any Text WCAG AA ✓ Pass

Large Text (above 18pt) WCAG AAA ✓ Pass

Any Text WCAG AAA ✓ Pass

If you want to check with other color combinations, try the [Color Contrast Checker](#).

Hex D6ACB2 Background



This preview shows how black text looks on a background with the Hex color D6ACB2.

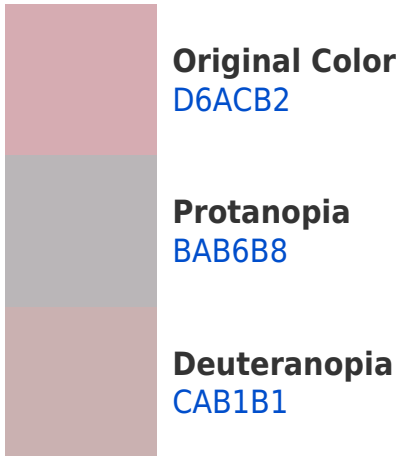


This preview shows how white text looks on a background with the Hex color D6ACB2.

Color Blindness Simulation

Color vision deficiency is a very complex topic, and I could not describe the different causes any better than Wikipedia does, so if you want to learn more, you should check out their [article about color blindness](#).

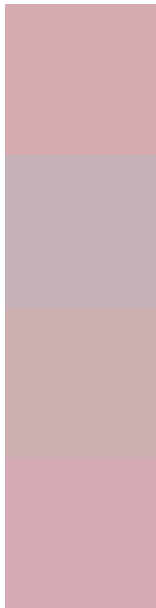
Dichromacy





Tritanopia
D7ABB8

Trichromacy



Original Color
D6ACB2

Protanomaly
C4B2B6

Deuteranomaly
CEAFB1

Tritanomaly
D7ABB6

Monochromacy



Original Color
D6ACB2

Achromatopsia
B9B9B9

Achromatomaly
C4B4B6

CSS Examples

Text

The CSS property to change the color of the text to Hex D6ACB2 is called "color". The color property can be set on classes, ids or directly on the HTML element.

This example shows how text in the color #D6ACB2 looks like.

```
.text, #text, p{  
    color:#D6ACB2  
}
```

If you want to add a text shadow in that color use the text-shadow property, you can generate a text shadow directly with our [CSS Text Shadow Generator](#).

Here you see how black text with a 4 pixel #D6ACB2 colored shadow looks like.

```
.shadow{ text-shadow: 4px 4px 2px #D6ACB2
}
```

Border

The CSS property to change the border of an element to Hex D6ACB2 is called "border". The border property can be set on classes, ids or directly on the HTML element.

This example shows the color as border, it can be applied via the CSS property "border" or "border-color".

```
.border, #border, table{ border:4px solid
#D6ACB2 }
```

If only the border color should be changed use the property `border-color`.

```
.border{ border-color:#D6ACB2 }
```

If you want to add a box shadow in that color use:

Here you see how a box with a 4 pixel #D6ACB2 colored shadow looks like.

```
.boxshadow{ -moz-box-shadow:4px 4px 4px  
4px #D6ACB2; -webkit-box-shadow:4px 4px  
4px 4px #D6ACB2; box-shadow:4px 4px 4px  
4px #D6ACB2 }
```

Background

The CSS property to change the background color of an element to Hex D6ACB2 is called "background". The background property can be set on classes, ids or directly on the HTML element.

```
.background, #background, body{  
background:#D6ACB2 }
```

If only the background color should be changed can be used:

```
.background{ background-color:#D6ACB2 }
```

This example shows the color as background, it is applied via the CSS property "background".

To optimize and compress your CSS code, you can use our [online CSS compressor and optimizer](#) based on csstidy. If you want to create a linear or radial gradient as background or border, check our [CSS Gradient Generator](#).

Hey! You found this booklet interesting? Support Converting Colors with the new Membership Option!

The pro membership hides all ads, plus gives you double the colors in the color bucket, and more awesome pro features!

[Learn more, Memberships starting at \\$2.50/m!](#)

**Follow me
on Twitter!**

@ConvertingColor