

Converting Colors

Hex(D6AFB2)

Have a look what the booklet for
Hex(D6AFB2) contains.

Hex(D6AFB2)	3
<i>Conversions</i>	4
<i>Details</i>	6
<i>Harmonies</i>	11
<i>Previews</i>	23
<i>Color Blindness Simulation</i>	26
<i>CSS Examples</i>	29

Color

Hex(D6AFB2)

Conversions

Conversions Part 1

Format	Color
Hex	D6AFB2
RGB	214, 175, 178
RGB Percent	84%, 69%, 70%
CMY	0.1608, 0.3137, 0.3020
CMYK	0.00, 0.18, 0.17, 0.16
HSL	355°, 32%, 76%
HSV	355°, 18%, 84%
XYZ	51.0974, 48.1704, 48.7242
YIQ	187.0030, 22.2810, 9.2010

Conversions

Conversions Part 2

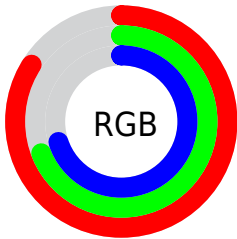
Format	Color
RYB	214, 175, 178
Decimal	14069682
CIELab	74.93, 14.61, 3.80
CIELCh	75, 15.096, 14.592
Yxy	48.1704, 0.3453, 0.3255
Android (android.graphics.Color)	4292259762 (0xFFD6AFB2)
YUV	187.0030, -4.4385, 23.6764
Hunter-Lab	69.4049, 9.9569, 6.9602

Details

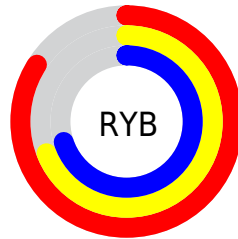
The Hex color **D6AFB2** is a light color, and the websafe version is hex **CC9999**. A complement of this color would be **AFD6D3**, and the grayscale version is **BBBBBB**.

A 20% lighter version of the original color is **FFE7EA**, and **9F7A7D** is the 20% darker color. If you saturate the color by 10%, you get **D69A9E**, and if you desaturate by 10%, it is **D6C4C6**.

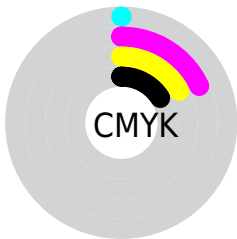
Distribution



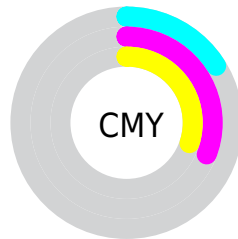
- Red (84%)
- Green (69%)
- Blue (70%)



- Red (84%)
- Yellow (69%)
- Blue (70%)



- Cyan (0%)
- Magenta (18%)
- Yellow (17%)
- Black (16%)



- Cyan (16%)
- Magenta (31%)
- Yellow (30%)

Brightness & Saturation Gradients

These gradients show how the Hex color D6AFB2 changes by changing the brightness by 10 percent. The first figure shows a shift by +10% for each color and the second figure -10%.

Similar to the brightness gradients but the following saturation gradients show a change of the Hex color D6AFB2 by changing the saturation by 10% instead.

 D6AFB2

 D6AFB2

FFFFFF

 BA9497

 FFE7EA

 9F7A7D

 846165

 6B4A4D

 523336

 3A1D21

 250609

 000000

 D6AFB2

 D6AFB2

 D69A9E

 D6C4C6

 D6848A

 D6DADA

 D66F77

 D6EFED

 D65963

 D6FFFF

 D6444F

 D62F3B

 D61928

 D60414

 D60010

Harmonies

Analogous

The Analogous color harmony consists of three colors that are next to each other on the color wheel.



D0B0C0



D6AFB2



D4B1A5

Triad

The Triadic color harmony groups three colors that are evenly spaced from another and form a triangle on the color wheel.



D6AFB2



ACBEA4



A1BCD3

Complementary

The Complementary color scheme is a pair of colors which are on the opposite of each other on the color wheel.



D6AFB2



AFD6D3

Split Complementary

Split-complementary colors differ from the complementary color scheme. The scheme consists of three colors, the original color and two neighbors of the complement color.



96BFCB



D6AFB2



9EC0B1

Square

The Square scheme is like the rectangle color scheme, but the four colors are evenly spaced on the color wheel.



D6AFB2



BCBA9E



95C1BF



B2B7D3

Rectangle

The Rectangle color scheme consists of four colors that form a rectangle on the color wheel.



D6AFB2



CEB4A0



95C1BF



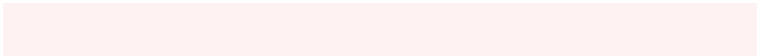
9DBDD1

Sweetspot

The Sweet Spot groups the original color and five complimentary colors.



D6AFB2



FFF2F3



D3AFD6



807878



000000



808080

Same Dimension

The Same Dimension uses a secret algorithm to generate beautiful new colors.



D6AFB2



FFC7CB



D6BFAF



6B6061



AB000D



2B0003

Inverse Universe

The Inverse Universe completely reimagines the original color for something new.



D6AFB2



FFC7CB



AFC6D6



6B6061



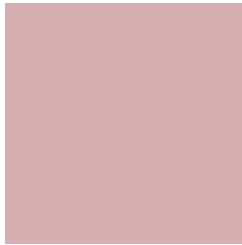
AB000D



2B0003

Previews

White Background



This preview shows how the Hex color D6AFB2 looks on a white background.

Color Contrast Check

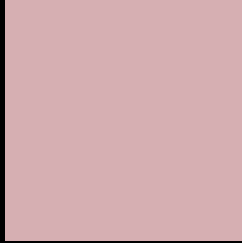
Large Text (above 18pt) WCAG AA × Fail

Any Text WCAG AA × Fail

Large Text (above 18pt) WCAG AAA × Fail

Any Text WCAG AAA × Fail

Black Background



This preview shows how the Hex color D6AFB2 looks on a black background.

Color Contrast Check

Large Text (above 18pt) WCAG AA ✓ Pass

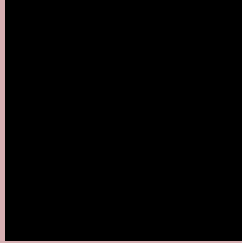
Any Text WCAG AA ✓ Pass

Large Text (above 18pt) WCAG AAA ✓ Pass

Any Text WCAG AAA ✓ Pass

If you want to check with other color combinations, try the [Color Contrast Checker](#).

Hex D6AFB2 Background



This preview shows how black text looks on a background with the Hex color D6AFB2.



This preview shows how white text looks on a background with the Hex color D6AFB2.

Color Blindness Simulation

Color vision deficiency is a very complex topic, and I could not describe the different causes any better than Wikipedia does, so if you want to learn more, you should check out their [article about color blindness](#).

Dichromacy



Original Color
D6AFB2

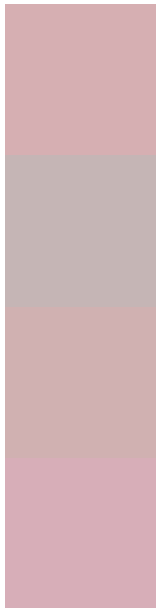
Protanopia
BCB8B7

Deuteranopia
CDB2B1



Tritanopia
D7AEBB

Trichromacy



Original Color
D6AFB2

Protanomaly
C5B5B5

Deuteranomaly
D0B1B1

Tritanomaly
D7AEB8

Monochromacy



Original Color
D6AFB2

Achromatopsia
BBBBBB

Achromatomaly
C5B7B8

CSS Examples

Text

The CSS property to change the color of the text to Hex D6AFB2 is called "color". The color property can be set on classes, ids or directly on the HTML element.

This example shows how text in the color #D6AFB2 looks like.

```
.text, #text, p{  
    color:#D6AFB2  
}
```

If you want to add a text shadow in that color use the text-shadow property, you can generate a text shadow directly with our [CSS Text Shadow Generator](#).

Here you see how black text with a 4 pixel #D6AFB2 colored shadow looks like.

```
.shadow{ text-shadow: 4px 4px 2px #D6AFB2
}
```

Border

The CSS property to change the border of an element to Hex D6AFB2 is called "border". The border property can be set on classes, ids or directly on the HTML element.

This example shows the color as border, it can be applied via the CSS property "border" or "border-color".

```
.border, #border, table{ border:4px solid
#D6AFB2 }
```

If only the border color should be changed use the property `border-color`.

```
.border{ border-color:#D6AFB2 }
```

If you want to add a box shadow in that color use:

Here you see how a box with a 4 pixel #D6AFB2 colored shadow looks like.

```
.boxshadow{ -moz-box-shadow:4px 4px 4px  
4px #D6AFB2; -webkit-box-shadow:4px 4px  
4px 4px #D6AFB2; box-shadow:4px 4px 4px  
4px #D6AFB2 }
```

Background

The CSS property to change the background color of an element to Hex D6AFB2 is called "background". The background property can be set on classes, ids or directly on the HTML element.

```
.background, #background, body{  
background:#D6AFB2 }
```

If only the background color should be changed can be used:

```
.background{ background-color:#D6AFB2 }
```

This example shows the color as background, it is applied via the CSS property "background".

To optimize and compress your CSS code, you can use our [online CSS compressor and optimizer](#) based on csstidy. If you want to create a linear or radial gradient as background or border, check our [CSS Gradient Generator](#).

Hey! You found this booklet interesting? Support Converting Colors with the new Membership Option!

The pro membership hides all ads, plus gives you double the colors in the color bucket, and more awesome pro features!

[Learn more, Memberships starting at \\$2.50/m!](#)

**Follow me
on Twitter!**

@ConvertingColor