

# Converting Colors

Hex(D6B5A7)

Have a look what the booklet for  
Hex(D6B5A7) contains.

<b>Hex(D6B5A7)</b> .....	3
<b><i>Conversions</i></b> .....	4
<b><i>Details</i></b> .....	6
<b><i>Harmonies</i></b> .....	11
<b><i>Previews</i></b> .....	23
<b><i>Color Blindness Simulation</i></b> .....	26
<b><i>CSS Examples</i></b> .....	29

# **Color**

**Hex(D6B5A7)**

# Conversions

## Conversions Part 1

Format	Color
Hex	D6B5A7
RGB	214, 181, 167
RGB Percent	84%, 71%, 65%
CMY	0.1608, 0.2902, 0.3451
CMYK	0.00, 0.15, 0.22, 0.16
HSL	18°, 36%, 75%
HSV	18°, 22%, 84%
XYZ	51.2305, 50.1339, 43.5359
YIQ	189.2710, 24.1620, 2.6420

# Conversions

## Conversions Part 2

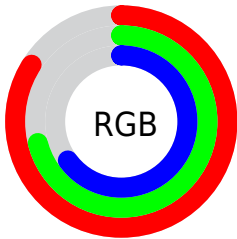
Format	Color
<a href="#">RYB</a>	<a href="#">214, 187, 167</a>
Decimal	<a href="#">14071207</a>
CIELab	<a href="#">76.15, 9.71, 11.54</a>
CIELCh	<a href="#">76, 15.080, 49.930</a>
Yxy	<a href="#">50.1339, 0.3536, 0.3460</a>
Android (android.graphics.Color)	<a href="#">4292261287 (0xFFD6B5A7)</a>
YUV	<a href="#">189.2710, -10.9796, 21.6873</a>
Hunter-Lab	<a href="#">70.8053, 5.2426, 13.1082</a>

# Details

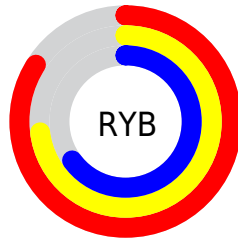
The Hex color **D6B5A7** is a light color, and the websafe version is hex **CC9999**. A complement of this color would be **A7C8D6**, and the grayscale version is **BDBDBD**.

A 20% lighter version of the original color is **FFEDDE**, and **9F8073** is the 20% darker color. If you saturate the color by 10%, you get **D6A692**, and if you desaturate by 10%, it is **D6C4BC**.

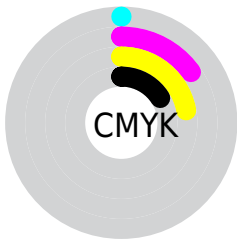
# Distribution



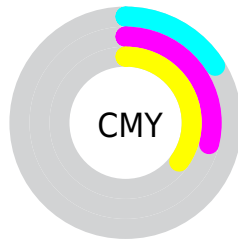
- Red (84%)
- Green (71%)
- Blue (65%)



- Red (84%)
- Yellow (73%)
- Blue (65%)



- Cyan (0%)
- Magenta (15%)
- Yellow (22%)
- Black (16%)



- Cyan (16%)
- Magenta (29%)
- Yellow (35%)

# Brightness & Saturation Gradients

These gradients show how the Hex color D6B5A7 changes by changing the brightness by 10 percent. The first figure shows a shift by +10% for each color and the second figure -10%.

Similar to the brightness gradients but the following saturation gradients show a change of the Hex color D6B5A7 by changing the saturation by 10% instead.



 D6B5A7

 D6B5A7

FFFFFF

 BA9A8D

 FFEDDE

 9F8073

 FFFFFB

 84675B

 6A4F43

 52382D

 3A2218

 250D00

 000000

 D6B5A7

 D6B5A7

 D6A692

 D6C4BC

 D6977C

 D6D3D2

 D68867

 D6E2E7

 D67951

 D6F1FD

 D66A3C

 D6FFFF

 D65B27

 D64C11

 D64000

# Harmonies

## Analogous

The Analogous color harmony consists of three colors that are next to each other on the color wheel.



DAB3B3



D6B5A7



CCB9A1

# Triad

The Triadic color harmony groups three colors that are evenly spaced from another and form a triangle on the color wheel.



D6B5A7



9FC4B6



B9BAD6

# Complementary

The Complementary color scheme is a pair of colors which are on the opposite of each other on the color wheel.



D6B5A7



A7C8D6

# Split Complementary

Split-complementary colors differ from the complementary color scheme. The scheme consists of three colors, the original color and two neighbors of the complement color.



A7BED7



D6B5A7



98C4C5

# Square

The Square scheme is like the rectangle color scheme, but the four colors are evenly spaced on the color wheel.



D6B5A7



ADC2AA



9BC2D1



C9B5CE

# Rectangle

The Rectangle color scheme consists of four colors that form a rectangle on the color wheel.



D6B5A7



C2BCA0



9BC2D1



B3BBD7



# Sweetspot

The Sweet Spot groups the original color and five complimentary colors.



D6B5A7



FFF2ED



D6A7C9



807875



000000



808080



# Same Dimension

The Same Dimension uses a secret algorithm to generate beautiful new colors.



D6B5A7



FFD0BD



D6CCA7



6B6460



AB3300



2B0D00



# Inverse Universe

The Inverse Universe completely reimagines the original color for something new.



A7C8D6



BDEBFF



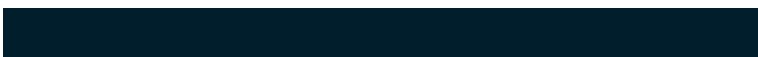
A7B1D6



60686B



0078AB

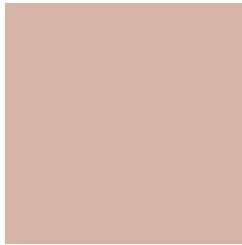


001E2B



# Previews

## White Background



This preview shows how the Hex color D6B5A7 looks on a white background.

## Color Contrast Check

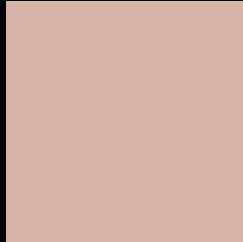
Large Text (above 18pt) WCAG AA × Fail

Any Text WCAG AA × Fail

Large Text (above 18pt) WCAG AAA × Fail

Any Text WCAG AAA × Fail

# Black Background



This preview shows how the Hex color D6B5A7 looks on a black background.

## Color Contrast Check

Large Text (above 18pt) WCAG AA ✓ Pass

Any Text WCAG AA ✓ Pass

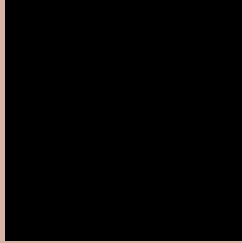
Large Text (above 18pt) WCAG AAA ✓ Pass

Any Text WCAG AAA ✓ Pass

If you want to check with other color combinations, try the [Color Contrast Checker](#).



## Hex D6B5A7 Background



This preview shows how black text looks on a background with the Hex color D6B5A7.

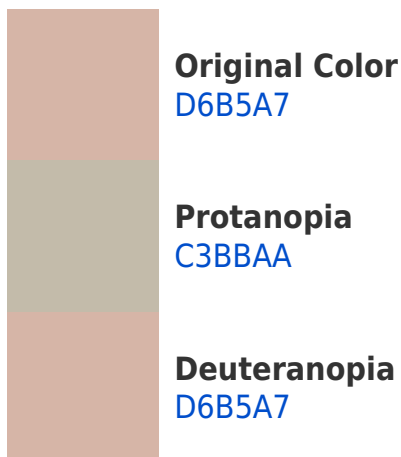


This preview shows how white text looks on a background with the Hex color D6B5A7.

# Color Blindness Simulation

Color vision deficiency is a very complex topic, and I could not describe the different causes any better than Wikipedia does, so if you want to learn more, you should check out their [article about color blindness](#).

## Dichromacy





**Tritanopia**  
D9B1BF

# Trichromacy



**Original Color**  
D6B5A7

**Protanomaly**  
CAB9A9

**Deuteranomaly**  
D6B5A7

**Tritanomaly**  
D8B2B6

# Monochromacy



**Original Color**  
D6B5A7

**Achromatopsia**  
BDBDBD

**Achromatomaly**  
C6BAB5

# CSS Examples

## Text

The CSS property to change the color of the text to Hex D6B5A7 is called "color". The color property can be set on classes, ids or directly on the HTML element.

This example shows how text in the color #D6B5A7 looks like.

```
.text, #text, p{  
    color:#D6B5A7  
}
```

If you want to add a text shadow in that color use the text-shadow property, you can generate a text shadow directly with our [CSS Text Shadow Generator](#).

Here you see how black text with a 4 pixel #D6B5A7 colored shadow looks like.

```
.shadow{ text-shadow: 4px 4px 2px #D6B5A7
}
```

## Border

The CSS property to change the border of an element to Hex D6B5A7 is called "border". The border property can be set on classes, ids or directly on the HTML element.

This example shows the color as border, it can be applied via the CSS property "border" or "border-color".

```
.border, #border, table{ border:4px solid
#D6B5A7 }
```

If only the border color should be changed use the property `border-color`.

```
.border{ border-color:#D6B5A7 }
```

If you want to add a box shadow in that color use:

Here you see how a box with a 4 pixel #D6B5A7 colored shadow looks like.

```
.boxshadow{ -moz-box-shadow:4px 4px 4px  
4px #D6B5A7; -webkit-box-shadow:4px 4px  
4px 4px #D6B5A7; box-shadow:4px 4px 4px  
4px #D6B5A7 }
```

# Background

The CSS property to change the background color of an element to Hex D6B5A7 is called "background". The background property can be set on classes, ids or directly on the HTML element.

```
.background, #background, body{  
background:#D6B5A7 }
```

If only the background color should be changed can be used:

```
.background{ background-color:#D6B5A7 }
```

This example shows the color as background, it is applied via the CSS property "background".

To optimize and compress your CSS code, you can use our [online CSS compressor and optimizer](#) based on csstidy. If you want to create a linear or radial gradient as background or border, check our [CSS Gradient Generator](#).



Hey! You found this booklet interesting? Support Converting Colors with the new Membership Option!

The pro membership hides all ads, plus gives you double the colors in the color bucket, and more awesome pro features!

**[Learn more, Memberships starting at \\$2.50/m!](#)**

**Follow me  
on Twitter!**

@ConvertingColor