

# Converting Colors

Hex(D6B68E)

Have a look what the booklet for  
Hex(D6B68E) contains.

<b>Hex(D6B68E)</b> .....	3
<i><b>Conversions</b></i> .....	4
<i><b>Details</b></i> .....	6
<i><b>Harmonies</b></i> .....	11
<i><b>Previews</b></i> .....	23
<i><b>Color Blindness Simulation</b></i> .....	26
<i><b>CSS Examples</b></i> .....	29

# **Color**

**Hex(D6B68E)**

# Conversions

## Conversions Part 1

Format	Color
Hex	D6B68E
RGB	214, 182, 142
RGB Percent	84%, 71%, 56%
CMY	0.1608, 0.2863, 0.4431
CMYK	0.00, 0.15, 0.34, 0.16
HSL	33°, 47%, 70%
HSV	33°, 34%, 84%
XYZ	49.3420, 49.7050, 32.5846
YIQ	187.0080, 31.9120, -5.6560

# Conversions

## Conversions Part 2

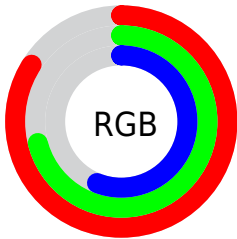
Format	Color
R <sub>Y</sub> B	200, 214, 142
Decimal	14071438
CIE Lab	75.89, 5.78, 24.65
CIE LCh	76, 25.319, 76.803
Yxy	49.7050, 0.3748, 0.3776
Android (android.graphics.Color)	4292261518 (0xFFD6B68E)
YUV	187.0080, -22.1889, 23.6720
Hunter-Lab	70.5018, 1.5484, 21.9485

# Details

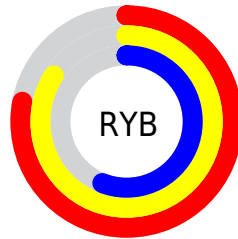
The Hex color **D6B68E** is a light color, and the websafe version is hex **FFCC99**. A complement of this color would be **8EAED6**, and the grayscale version is **BBBBBB**.

A 20% lighter version of the original color is **FFEEC4**, and **9E815B** is the 20% darker color. If you saturate the color by 10%, you get **D6AC79**, and if you desaturate by 10%, it is **D6C0A3**.

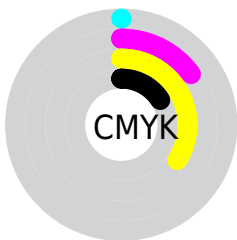
# Distribution



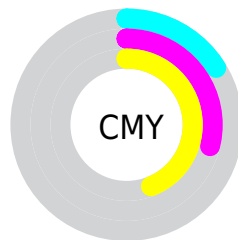
- Red (84%)
- Green (71%)
- Blue (56%)



- Red (78%)
- Yellow (84%)
- Blue (56%)



- Cyan (0%)
- Magenta (15%)
- Yellow (34%)
- Black (16%)



- Cyan (16%)
- Magenta (29%)
- Yellow (44%)

# Brightness & Saturation Gradients

These gradients show how the Hex color D6B68E changes by changing the brightness by 10 percent. The first figure shows a shift by +10% for each color and the second figure -10%.

Similar to the brightness gradients but the following saturation gradients show a change of the Hex color D6B68E by changing the saturation by 10% instead.



 D6B68E

 D6B68E

FFFFFF

 BA9B74

 FFEEC4

 9E815B

 FFFFFE0

 836844

FFFFFFD

 69502D

 503917

 382400

 200F00

 000000

 D6B68E

 D6B68E

 D6AC79

 D6C0A3

 D6A363

 D6C9B9

 D6994E

 D6D3CE

 D69038

 D6DCE4

 D68623

 D6E6F9

 D67D0E

 D6EFFF

 D67700

 D6F9FF

 D6FFFF

# Harmonies

## Analogous

The Analogous color harmony consists of three colors that are next to each other on the color wheel.



E6AF9A



D6B68E



BFBE8E

# Triad

The Triadic color harmony groups three colors that are evenly spaced from another and form a triangle on the color wheel.



D6B68E



7AC8C8



CFB1DB

# Complementary

The Complementary color scheme is a pair of colors which are on the opposite of each other on the color wheel.



D6B68E



8EAED6

# Split Complementary

Split-complementary colors differ from the complementary color scheme. The scheme consists of three colors, the original color and two neighbors of the complement color.



B1B9E8



D6B68E



7BC6DC

# Square

The Square scheme is like the rectangle color scheme, but the four colors are evenly spaced on the color wheel.



D6B68E



8BC8B0



91C0E8



E3ABC6

# Rectangle

The Rectangle color scheme consists of four colors that form a rectangle on the color wheel.



D6B68E



ADC295



91C0E8



C6B3E0



# Sweetspot

The Sweet Spot groups the original color and five complimentary colors.



D6B68E



FFF4E6



D68EAE



807970



000000



808080



# Same Dimension

The Same Dimension uses a secret algorithm to generate beautiful new colors.



D6B68E



FFD299



D2D68E



6B6660



AB5F00



2B1800

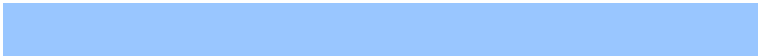


# Inverse Universe

The Inverse Universe completely reimagines the original color for something new.



8EAED6



99C6FF



928ED6



60656B



004CAB

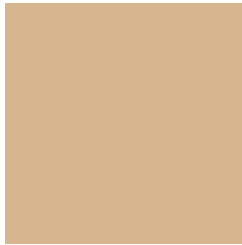


00132B



# Previews

## White Background



This preview shows how the Hex color D6B68E looks on a white background.

## Color Contrast Check

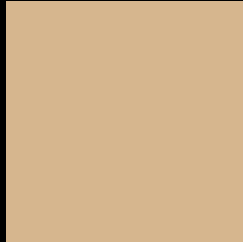
Large Text (above 18pt) WCAG AA × Fail

Any Text WCAG AA × Fail

Large Text (above 18pt) WCAG AAA × Fail

Any Text WCAG AAA × Fail

# Black Background



This preview shows how the Hex color D6B68E looks on a black background.

## Color Contrast Check

Large Text (above 18pt) WCAG AA ✓ Pass

Any Text WCAG AA ✓ Pass

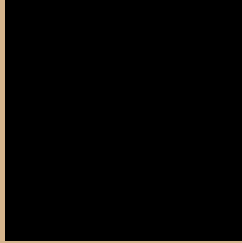
Large Text (above 18pt) WCAG AAA ✓ Pass

Any Text WCAG AAA ✓ Pass

If you want to check with other color combinations, try the [Color Contrast Checker](#).



## Hex D6B68E Background



This preview shows how black text looks on a background with the Hex color D6B68E.



This preview shows how white text looks on a background with the Hex color D6B68E.

# Color Blindness Simulation

Color vision deficiency is a very complex topic, and I could not describe the different causes any better than Wikipedia does, so if you want to learn more, you should check out their [article about color blindness](#).

## Dichromacy

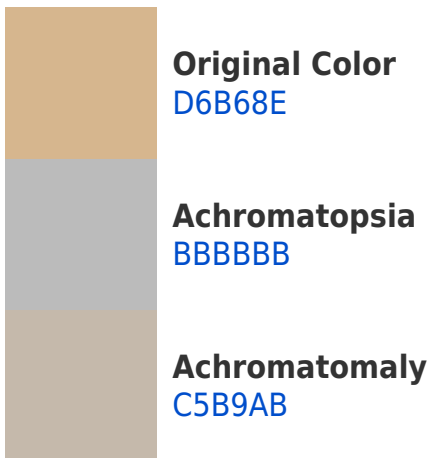




# Trichromacy



# Monochromacy



# CSS Examples

## Text

The CSS property to change the color of the text to Hex D6B68E is called "color". The color property can be set on classes, ids or directly on the HTML element.

This example shows how text in the color #D6B68E looks like.

```
.text, #text, p{  
    color:#D6B68E  
}
```

If you want to add a text shadow in that color use the text-shadow property, you can generate a text shadow directly with our [CSS Text Shadow Generator](#).

Here you see how black text with a 4 pixel #D6B68E colored shadow looks like.

```
.shadow{ text-shadow: 4px 4px 2px #D6B68E
}
```

## Border

The CSS property to change the border of an element to Hex D6B68E is called "border". The border property can be set on classes, ids or directly on the HTML element.

This example shows the color as border, it can be applied via the CSS property "border" or "border-color".

```
.border, #border, table{ border:4px solid
#D6B68E }
```

If only the border color should be changed use the property `border-color`.

```
.border{ border-color:#D6B68E }
```

If you want to add a box shadow in that color use:

Here you see how a box with a 4 pixel #D6B68E colored shadow looks like.

```
.boxshadow{ -moz-box-shadow:4px 4px 4px  
4px #D6B68E; -webkit-box-shadow:4px 4px  
4px 4px #D6B68E; box-shadow:4px 4px 4px  
4px #D6B68E }
```

# Background

The CSS property to change the background color of an element to Hex D6B68E is called "background". The background property can be set on classes, ids or directly on the HTML element.

```
.background, #background, body{  
background:#D6B68E }
```

If only the background color should be changed can be used:

```
.background{ background-color:#D6B68E }
```

This example shows the color as background, it is applied via the CSS property "background".

To optimize and compress your CSS code, you can use our [online CSS compressor and optimizer](#) based on csstidy. If you want to create a linear or radial gradient as background or border, check our [CSS Gradient Generator](#).



Hey! You found this booklet interesting? Support Converting Colors with the new Membership Option!

The pro membership hides all ads, plus gives you double the colors in the color bucket, and more awesome pro features!

**[Learn more, Memberships starting at \\$2.50/m!](#)**

**Follow me  
on Twitter!**

@ConvertingColor