

# Converting Colors

Hex(D6B99E)

Have a look what the booklet for  
Hex(D6B99E) contains.

<b>Hex(D6B99E)</b> .....	3
<i><b>Conversions</b></i> .....	4
<i><b>Details</b></i> .....	6
<i><b>Harmonies</b></i> .....	11
<i><b>Previews</b></i> .....	23
<i><b>Color Blindness Simulation</b></i> .....	26
<i><b>CSS Examples</b></i> .....	29

# **Color**

**Hex(D6B99E)**

# Conversions

## Conversions Part 1

<b>Format</b>	<b>Color</b>
Hex	D6B99E
RGB	214, 185, 158
RGB Percent	84%, 73%, 62%
CMY	0.1608, 0.2745, 0.3804
CMYK	0.00, 0.14, 0.26, 0.16
HSL	29°, 41%, 73%
HSV	29°, 26%, 84%
XYZ	51.2521, 51.4627, 39.5798
YIQ	190.5930, 25.9510, -2.2490

# Conversions

## Conversions Part 2

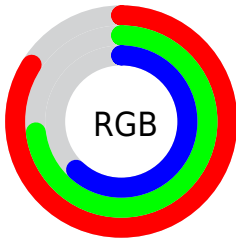
Format	Color
<a href="#">RYB</a>	<a href="#">214, 210, 158</a>
Decimal	<a href="#">14072222</a>
CIELab	<a href="#">76.96, 6.29, 17.54</a>
CIELCh	<a href="#">77, 18.629, 70.281</a>
Yxy	<a href="#">51.4627, 0.3602, 0.3617</a>
Android (android.graphics.Color)	<a href="#">4292262302</a> ( <a href="#">0xFFD6B99E</a> )
YUV	<a href="#">190.5930, -16.0683, 20.5279</a>
Hunter-Lab	<a href="#">71.7375, 1.9868, 17.5041</a>

# Details

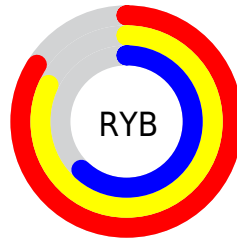
The Hex color **D6B99E** is a light color, and the websafe version is hex **CCCC99**. A complement of this color would be **9EBBD6**, and the grayscale version is **BFBFBF**.

A 20% lighter version of the original color is **FFF1D5**, and **9F846B** is the 20% darker color. If you saturate the color by 10%, you get **D6AE89**, and if you desaturate by 10%, it is **D6C4B3**.

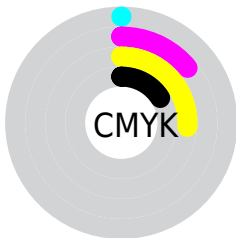
# Distribution



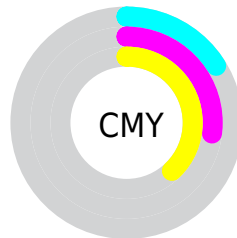
- Red (84%)
- Green (73%)
- Blue (62%)



- Red (84%)
- Yellow (82%)
- Blue (62%)



- Cyan (0%)
- Magenta (14%)
- Yellow (26%)
- Black (16%)



- Cyan (16%)
- Magenta (27%)
- Yellow (38%)

# Brightness & Saturation Gradients

These gradients show how the Hex color D6B99E changes by changing the brightness by 10 percent. The first figure shows a shift by +10% for each color and the second figure -10%.

Similar to the brightness gradients but the following saturation gradients show a change of the Hex color D6B99E by changing the saturation by 10% instead.



 D6B99E

 D6B99E

FFFFFF

 BA9E84

 FFF1D5

 9F846B

 FFFFF1

 846B52

 6A533B

 513C25

 392610

 231200

 000000

 D6B99E

 D6B99E

 D6AE89

 D6C4B3

 D6A373

 D6CFC9

 D6985E

 D6DADE

 D68D48

 D6E5F4

 D68233

 D6F0FF

 D6771E

 D6FBFF

 D66B08

 D6FFFF

 D66700

# Harmonies

## Analogous

The Analogous color harmony consists of three colors that are next to each other on the color wheel.



E0B4A8



D6B99E



C5BF9C

# Triad

The Triadic color harmony groups three colors that are evenly spaced from another and form a triangle on the color wheel.



D6B99E



92C8C3



C8B8D8

# Complementary

The Complementary color scheme is a pair of colors which are on the opposite of each other on the color wheel.



D6B99E



9EBBD6

# Split Complementary

Split-complementary colors differ from the complementary color scheme. The scheme consists of three colors, the original color and two neighbors of the complement color.



B2BDE0



D6B99E



91C7D4

# Square

The Square scheme is like the rectangle color scheme, but the four colors are evenly spaced on the color wheel.



D6B99E



9FC7B2



9DC3DE



DAB3CA

# Rectangle

The Rectangle color scheme consists of four colors that form a rectangle on the color wheel.



D6B99E



B8C2A0



9DC3DE



C1BADC



# Sweetspot

The Sweet Spot groups the original color and five complimentary colors.



D6B99E



FFF4EB



D69EBC



807973



000000



808080



# Same Dimension

The Same Dimension uses a secret algorithm to generate beautiful new colors.



D6B99E



FFD6B0



D6D49E



6B6660



AB5200



2B1500

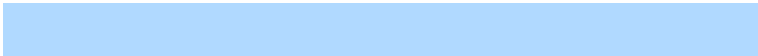


# Inverse Universe

The Inverse Universe completely reimagines the original color for something new.



9EBBD6



B0D9FF



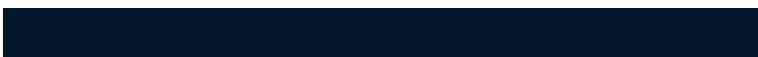
9EA0D6



60666B



0058AB



00162B



# Previews

## White Background



This preview shows how the Hex color D6B99E looks on a white background.

## Color Contrast Check

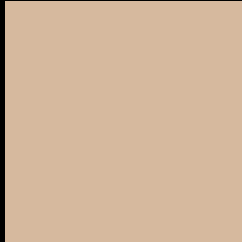
Large Text (above 18pt) WCAG AA × Fail

Any Text WCAG AA × Fail

Large Text (above 18pt) WCAG AAA × Fail

Any Text WCAG AAA × Fail

# Black Background



This preview shows how the Hex color D6B99E looks on a black background.

## Color Contrast Check

Large Text (above 18pt) WCAG AA ✓ Pass

Any Text WCAG AA ✓ Pass

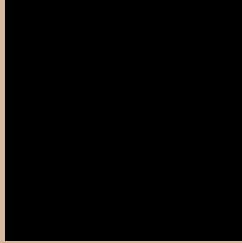
Large Text (above 18pt) WCAG AAA ✓ Pass

Any Text WCAG AAA ✓ Pass

If you want to check with other color combinations, try the [Color Contrast Checker](#).



## Hex D6B99E Background



This preview shows how black text looks on a background with the Hex color D6B99E.



This preview shows how white text looks on a background with the Hex color D6B99E.

# Color Blindness Simulation

Color vision deficiency is a very complex topic, and I could not describe the different causes any better than Wikipedia does, so if you want to learn more, you should check out their [article about color blindness](#).

## Dichromacy



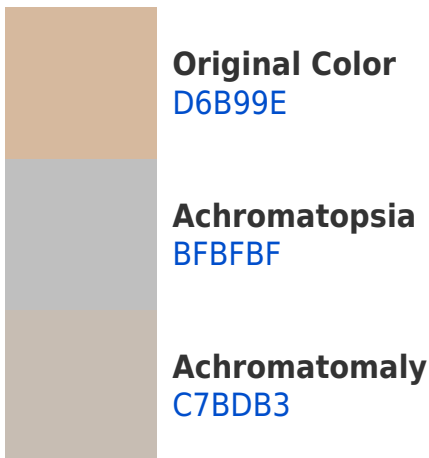


**Tritanopia**  
DAB4C2

# Trichromacy



# Monochromacy



# CSS Examples

## Text

The CSS property to change the color of the text to Hex D6B99E is called "color". The color property can be set on classes, ids or directly on the HTML element.

This example shows how text in the color #D6B99E looks like.

```
.text, #text, p{  
    color:#D6B99E  
}
```

If you want to add a text shadow in that color use the text-shadow property, you can generate a text shadow directly with our [CSS Text Shadow Generator](#).

Here you see how black text with a 4 pixel #D6B99E colored shadow looks like.

```
.shadow{ text-shadow: 4px 4px 2px #D6B99E
}
```

## Border

The CSS property to change the border of an element to Hex D6B99E is called "border". The border property can be set on classes, ids or directly on the HTML element.

This example shows the color as border, it can be applied via the CSS property "border" or "border-color".

```
.border, #border, table{ border:4px solid
#D6B99E }
```

If only the border color should be changed use the property `border-color`.

```
.border{ border-color:#D6B99E }
```

If you want to add a box shadow in that color use:

Here you see how a box with a 4 pixel #D6B99E colored shadow looks like.

```
.boxshadow{ -moz-box-shadow:4px 4px 4px  
4px #D6B99E; -webkit-box-shadow:4px 4px  
4px 4px #D6B99E; box-shadow:4px 4px 4px  
4px #D6B99E }
```

# Background

The CSS property to change the background color of an element to Hex D6B99E is called "background". The background property can be set on classes, ids or directly on the HTML element.

```
.background, #background, body{  
background:#D6B99E }
```

If only the background color should be changed can be used:

```
.background{ background-color:#D6B99E }
```

This example shows the color as background, it is applied via the CSS property "background".

To optimize and compress your CSS code, you can use our [online CSS compressor and optimizer](#) based on csstidy. If you want to create a linear or radial gradient as background or border, check our [CSS Gradient Generator](#).



Hey! You found this booklet interesting? Support Converting Colors with the new Membership Option!

The pro membership hides all ads, plus gives you double the colors in the color bucket, and more awesome pro features!

**[Learn more, Memberships starting at \\$2.50/m!](#)**

**Follow me  
on Twitter!**

@ConvertingColor