

Converting Colors

Hex(D6BFB3)

Have a look what the booklet for
Hex(D6BFB3) contains.

Hex(D6BFB3)	3
<i>Conversions</i>	4
<i>Details</i>	6
<i>Harmonies</i>	11
<i>Previews</i>	23
<i>Color Blindness Simulation</i>	26
<i>CSS Examples</i>	29

Color

Hex(D6BFB3)

Conversions

Conversions Part 1

Format	Color
Hex	D6BFB3
RGB	214, 191, 179
RGB Percent	84%, 75%, 70%
CMY	0.1608, 0.2510, 0.2980
CMYK	0.00, 0.11, 0.16, 0.16
HSL	21°, 30%, 77%
HSV	21°, 16%, 84%
XYZ	54.4990, 54.8124, 50.3553
YIQ	196.5090, 17.5600, 1.1440

Conversions

Conversions Part 2

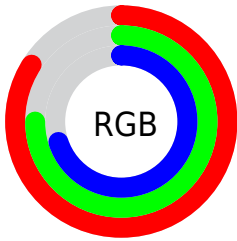
Format	Color
RYB	214, 197, 179
Decimal	14073779
CIELab	78.93, 6.19, 9.01
CIElCh	79, 10.936, 55.505
Yxy	54.8124, 0.3413, 0.3433
Android (android.graphics.Color)	4292263859 (0xFFD6BFB3)
YUV	196.5090, -8.6319, 15.3396
Hunter-Lab	74.0354, 1.8357, 11.4986

Details

The Hex color **D6BFB3** is a light color, and the websafe version is hex **CCCCCC**. A complement of this color would be **B3CAD6**, and the grayscale version is **C5C5C5**.

A 20% lighter version of the original color is **FFF7EB**, and **9F8A7E** is the 20% darker color. If you saturate the color by 10%, you get **D6B19E**, and if you desaturate by 10%, it is **D6CDC8**.

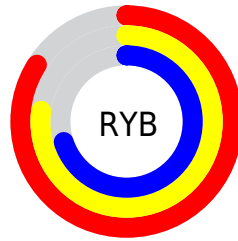
Distribution



Red (84%)

Green (75%)

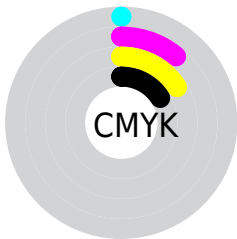
Blue (70%)



Red (84%)

Yellow (77%)

Blue (70%)

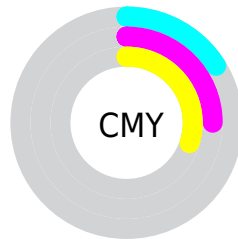


Cyan (0%)

Magenta (11%)

Yellow (16%)

Black (16%)



Cyan (16%)

Magenta (25%)

Yellow (30%)

Brightness & Saturation Gradients

These gradients show how the Hex color D6BFB3 changes by changing the brightness by 10 percent. The first figure shows a shift by +10% for each color and the second figure -10%.

Similar to the brightness gradients but the following saturation gradients show a change of the Hex color D6BFB3 by changing the saturation by 10% instead.

 D6BFB3

FFFFFF

 FFF7EB

 D6BFB3

 BAA498

 9F8A7E

 857065

 6B584D

 534037

 3B2A21

 25160B

 040000

 000000

 D6BFB3

 D6BFB3

 D6B19E

 D6CDC8

 D6A388

 D6DBDE

 D69573

 D6E9F3

 D6875D

 D6F7FF

 D67948

 D6FFFF

 D66B33

 D65D1D

 D64E08

 D64900

Harmonies

Analogous

The Analogous color harmony consists of three colors that are next to each other on the color wheel.



DABDBB



D6BFB3



CEC2AF

Triad

The Triadic color harmony groups three colors that are evenly spaced from another and form a triangle on the color wheel.



D6BFB3



AEC9C1



C4C1D6

Complementary

The Complementary color scheme is a pair of colors which are on the opposite of each other on the color wheel.



D6BFB3



B3CAD6

Split Complementary

Split-complementary colors differ from the complementary color scheme. The scheme consists of three colors, the original color and two neighbors of the complement color.



B7C5D7



D6BFB3



AAC9CC

Square

The Square scheme is like the rectangle color scheme, but the four colors are evenly spaced on the color wheel.



D6BFB3



B7C8B8



AEC8D4



CFBECF

Rectangle

The Rectangle color scheme consists of four colors that form a rectangle on the color wheel.



D6BFB3



C6C4B0



AEC8D4



BFC2D7

Sweetspot

The Sweet Spot groups the original color and five complimentary colors.



D6BFB3



FFF7F2



D6B3CA



807A78



000000



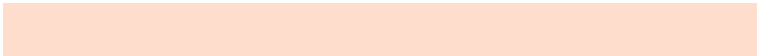
808080

Same Dimension

The Same Dimension uses a secret algorithm to generate beautiful new colors.



D6BFB3



FFDDCC



D6D0B3



6B6460



AB3B00



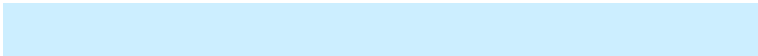
2B0F00

Inverse Universe

The Inverse Universe completely reimagines the original color for something new.



B3CAD6



CCEEFF



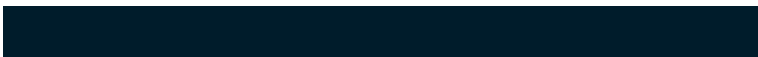
B3B9D6



60676B



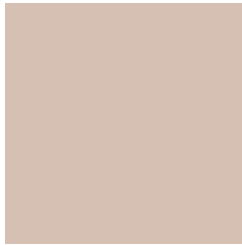
0070AB



001C2B

Previews

White Background



This preview shows how the Hex color D6BFB3 looks on a white background.

Color Contrast Check

Large Text (above 18pt) WCAG AA × Fail

Any Text WCAG AA × Fail

Large Text (above 18pt) WCAG AAA × Fail

Any Text WCAG AAA × Fail

Black Background



This preview shows how the Hex color D6BFB3 looks on a black background.

Color Contrast Check

Large Text (above 18pt) WCAG AA ✓ Pass

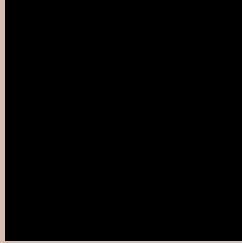
Any Text WCAG AA ✓ Pass

Large Text (above 18pt) WCAG AAA ✓ Pass

Any Text WCAG AAA ✓ Pass

If you want to check with other color combinations, try the [Color Contrast Checker](#).

Hex D6BFB3 Background



This preview shows how black text looks on a background with the Hex color D6BFB3.



This preview shows how white text looks on a background with the Hex color D6BFB3.

Color Blindness Simulation

Color vision deficiency is a very complex topic, and I could not describe the different causes any better than Wikipedia does, so if you want to learn more, you should check out their [article about color blindness](#).

Dichromacy



Original Color
D6BFB3

Protanopia
CAC3B5

Deuteranopia
DCBDB3



Tritanopia
D9BCCA

Trichromacy



Monochromacy



CSS Examples

Text

The CSS property to change the color of the text to Hex D6BFB3 is called "color". The color property can be set on classes, ids or directly on the HTML element.

This example shows how text in the color #D6BFB3 looks like.

```
.text, #text, p{  
    color:#D6BFB3  
}
```

If you want to add a text shadow in that color use the text-shadow property, you can generate a text shadow directly with our [CSS Text Shadow Generator](#).

Here you see how black text with a 4 pixel #D6BFB3 colored shadow looks like.

```
.shadow{ text-shadow: 4px 4px 2px #D6BFB3
}
```

Border

The CSS property to change the border of an element to Hex D6BFB3 is called "border". The border property can be set on classes, ids or directly on the HTML element.

This example shows the color as border, it can be applied via the CSS property "border" or "border-color".

```
.border, #border, table{ border:4px solid
#D6BFB3 }
```

If only the border color should be changed use the property `border-color`.

```
.border{ border-color:#D6BFB3 }
```

If you want to add a box shadow in that color use:

Here you see how a box with a 4 pixel #D6BFB3 colored shadow looks like.

```
.boxshadow{ -moz-box-shadow:4px 4px 4px  
4px #D6BFB3; -webkit-box-shadow:4px 4px  
4px 4px #D6BFB3; box-shadow:4px 4px 4px  
4px #D6BFB3 }
```

Background

The CSS property to change the background color of an element to Hex D6BFB3 is called "background". The background property can be set on classes, ids or directly on the HTML element.

```
.background, #background, body{  
background:#D6BFB3 }
```

If only the background color should be changed can be used:

```
.background{ background-color:#D6BFB3 }
```

This example shows the color as background, it is applied via the CSS property "background".

To optimize and compress your CSS code, you can use our [online CSS compressor and optimizer](#) based on csstidy. If you want to create a linear or radial gradient as background or border, check our [CSS Gradient Generator](#).

Hey! You found this booklet interesting? Support Converting Colors with the new Membership Option!

The pro membership hides all ads, plus gives you double the colors in the color bucket, and more awesome pro features!

[Learn more, Memberships starting at \\$2.50/m!](#)

**Follow me
on Twitter!**

@ConvertingColor