

Converting Colors

Hex(D6C0C6)

Have a look what the booklet for
Hex(D6C0C6) contains.

Hex(D6C0C6)	3
<i>Conversions</i>	4
<i>Details</i>	6
<i>Harmonies</i>	11
<i>Previews</i>	23
<i>Color Blindness Simulation</i>	26
<i>CSS Examples</i>	29

Color

Hex(D6C0C6)

Conversions

Conversions Part 1

Format	Color
Hex	D6C0C6
RGB	214, 192, 198
RGB Percent	84%, 75%, 78%
CMY	0.1608, 0.2471, 0.2235
CMYK	0.00, 0.10, 0.07, 0.16
HSL	344°, 21%, 80%
HSV	344°, 10%, 84%
XYZ	56.7742, 56.0726, 61.2569
YIQ	199.2620, 11.1860, 6.5300

Conversions

Conversions Part 2

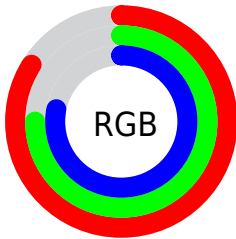
Format	Color
R _Y B	214, 192, 198
Decimal	14074054
CIE Lab	79.66, 8.78, -0.18
CIE LCh	80, 8.785, 358.807
Yxy	56.0726, 0.3261, 0.3221
Android (android.graphics.Color)	4292264134 (0xFFD6C0C6)
YUV	199.2620, -0.6222, 12.9252
Hunter-Lab	74.8817, 4.2933, 3.9150

Details

The Hex color **D6C0C6** is a light color, and the websafe version is hex **CCCCCC**. A complement of this color would be **C0D6D0**, and the grayscale version is **C7C7C7**.

A 20% lighter version of the original color is **FFF8FF**, and **9F8B90** is the 20% darker color. If you saturate the color by 10%, you get **D6ABB6**, and if you desaturate by 10%, it is **D6D5D6**.

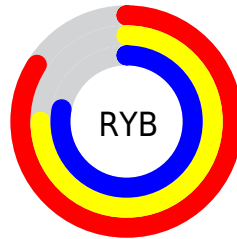
Distribution



Red (84%)

Green (75%)

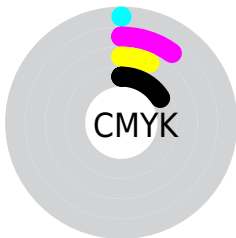
Blue (78%)



Red (84%)

Yellow (75%)

Blue (78%)

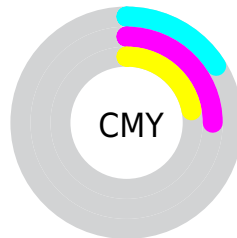


Cyan (0%)

Magenta (10%)

Yellow (7%)

Black (16%)



Cyan (16%)

Magenta (25%)

Yellow (22%)

Brightness & Saturation Gradients

These gradients show how the Hex color D6C0C6 changes by changing the brightness by 10 percent. The first figure shows a shift by +10% for each color and the second figure -10%.

Similar to the brightness gradients but the following saturation gradients show a change of the Hex color D6C0C6 by changing the saturation by 10% instead.

 D6C0C6

FFFFFF

 FFF8FF

 D6C0C6

 BAA5AB

 9F8B90

 857177

 6C595E

 534146

 3C2B30

 26161B

 110000

 000000

 D6C0C6

 D6C0C6

 D6ABB6

 D6D5D6

 D695A7

 D6EBE5

 D68097

 D6FFF5

 D66A88

 D6FFFF

 D65578

 D64069

 D62A59

 D61549

 D6003A

Harmonies

Analogous

The Analogous color harmony consists of three colors that are next to each other on the color wheel.



D0C1CE



D6C0C6



D7C0BE

Triad

The Triadic color harmony groups three colors that are evenly spaced from another and form a triangle on the color wheel.



D6C0C6



C3C7B7



B5C9D3

Complementary

The Complementary color scheme is a pair of colors which are on the opposite of each other on the color wheel.



D6C0C6



C0D6D0

Split Complementary

Split-complementary colors differ from the complementary color scheme. The scheme consists of three colors, the original color and two neighbors of the complement color.



B1CACD



D6C0C6



BAC9BD

Square

The Square scheme is like the rectangle color scheme, but the four colors are evenly spaced on the color wheel.



D6C0C6



CDC5B5



B4CAC5



BDC6D6

Rectangle

The Rectangle color scheme consists of four colors that form a rectangle on the color wheel.



D6C0C6



D6C1B9



B4CAC5



B3C9D1

Sweetspot

The Sweet Spot groups the original color and five complimentary colors.



D6C0C6



FFF7F9



D0C0D6



807A7C



000000



808080

Same Dimension

The Same Dimension uses a secret algorithm to generate beautiful new colors.



D6C0C6



FFE0E9



D6C5C0



6B6063



AB002F



2B000C

Inverse Universe

The Inverse Universe completely reimagines the original color for something new.



D6C0C6



FFE0E9



C0D1D6



6B6063



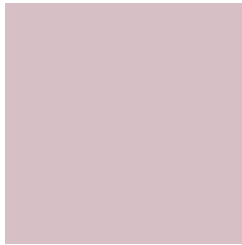
AB002F



2B000C

Previews

White Background



This preview shows how the Hex color D6C0C6 looks on a white background.

Color Contrast Check

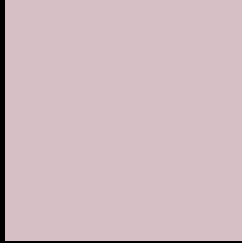
Large Text (above 18pt) WCAG AA × Fail

Any Text WCAG AA × Fail

Large Text (above 18pt) WCAG AAA × Fail

Any Text WCAG AAA × Fail

Black Background



This preview shows how the Hex color D6C0C6 looks on a black background.

Color Contrast Check

Large Text (above 18pt) WCAG AA ✓ Pass

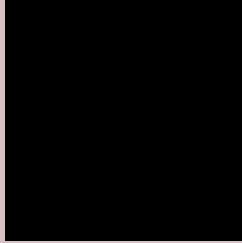
Any Text WCAG AA ✓ Pass

Large Text (above 18pt) WCAG AAA ✓ Pass

Any Text WCAG AAA ✓ Pass

If you want to check with other color combinations, try the [Color Contrast Checker](#).

Hex D6C0C6 Background



This preview shows how black text looks on a background with the Hex color D6C0C6.

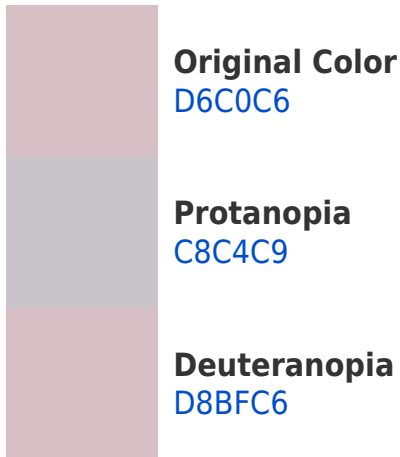


This preview shows how white text looks on a background with the Hex color D6C0C6.

Color Blindness Simulation

Color vision deficiency is a very complex topic, and I could not describe the different causes any better than Wikipedia does, so if you want to learn more, you should check out their [article about color blindness](#).

Dichromacy





Tritanopia
D7BFCE

Trichromacy



Original Color
D6C0C6

Protanomaly
CDC3C8

Deuteranomaly
D7BFC6

Tritanomaly
D7BFCB

Monochromacy



Original Color
D6C0C6

Achromatopsia
C7C7C7

Achromatomaly
CCC4C7

CSS Examples

Text

The CSS property to change the color of the text to Hex D6C0C6 is called "color". The color property can be set on classes, ids or directly on the HTML element.

This example shows how text in the color #D6C0C6 looks like.

```
.text, #text, p{  
    color:#D6C0C6  
}
```

If you want to add a text shadow in that color use the text-shadow property, you can generate a text shadow directly with our [CSS Text Shadow Generator](#).

Here you see how black text with a 4 pixel #D6C0C6 colored shadow looks like.

```
.shadow{ text-shadow: 4px 4px 2px #D6C0C6  
}
```

Border

The CSS property to change the border of an element to Hex D6C0C6 is called "border". The border property can be set on classes, ids or directly on the HTML element.

This example shows the color as border, it can be applied via the CSS property "border" or "border-color".

```
.border, #border, table{ border:4px solid  
#D6C0C6 }
```

If only the border color should be changed use the property `border-color`.

```
.border{ border-color:#D6C0C6 }
```

If you want to add a box shadow in that color use:

Here you see how a box with a 4 pixel #D6C0C6 colored shadow looks like.

```
.boxshadow{ -moz-box-shadow:4px 4px 4px  
4px #D6C0C6; -webkit-box-shadow:4px 4px  
4px 4px #D6C0C6; box-shadow:4px 4px 4px  
4px #D6C0C6 }
```

Background

The CSS property to change the background color of an element to Hex D6C0C6 is called "background". The background property can be set on classes, ids or directly on the HTML element.

```
.background, #background, body{  
background:#D6C0C6 }
```

If only the background color should be changed can be used:

```
.background{ background-color:#D6C0C6 }
```

This example shows the color as background, it is applied via the CSS property "background".

To optimize and compress your CSS code, you can use our [online CSS compressor and optimizer](#) based on csstidy. If you want to create a linear or radial gradient as background or border, check our [CSS Gradient Generator](#).

Hey! You found this booklet interesting? Support Converting Colors with the new Membership Option!

The pro membership hides all ads, plus gives you double the colors in the color bucket, and more awesome pro features!

[Learn more, Memberships starting at \\$2.50/m!](#)

**Follow me
on Twitter!**

@ConvertingColor