

# Converting Colors

Hex(D6C4B7)

Have a look what the booklet for  
Hex(D6C4B7) contains.

|  |    |
|--|----|
| <b>Hex(D6C4B7)</b> .....                       | 3  |
| <i><b>Conversions</b></i> .....                | 4  |
| <i><b>Details</b></i> .....                    | 6  |
| <i><b>Harmonies</b></i> .....                  | 11 |
| <i><b>Previews</b></i> .....                   | 23 |
| <i><b>Color Blindness Simulation</b></i> ..... | 26 |
| <i><b>CSS Examples</b></i> .....               | 29 |

# **Color**

**Hex(D6C4B7)**

# Conversions

## Conversions Part 1

| <b>Format</b> | <b>Color</b>               |
|---------------|----------------------------|
| Hex           | D6C4B7                     |
| RGB           | 214, 196, 183              |
| RGB Percent   | 84%, 77%, 72%              |
| CMY           | 0.1608, 0.2314, 0.2824     |
| CMYK          | 0.00, 0.08, 0.14, 0.16     |
| HSL           | 25°, 27%, 78%              |
| HSV           | 25°, 14%, 84%              |
| XYZ           | 56.0187, 57.1949, 52.8870  |
| YIQ           | 199.9000, 14.9010, -0.2270 |

# Conversions

## Conversions Part 2

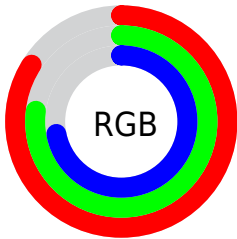
| Format                              | Color  |
|-------------------------------------|--|
| <a href="#">RYB</a>                 | <a href="#">214, 205, 183</a>                                |
| Decimal                             | <a href="#">14075063</a>                                     |
| CIELab                              | <a href="#">80.29, 4.17, 8.80</a>                            |
| CIElCh                              | <a href="#">80, 9.741, 64.627</a>                            |
| Yxy                                 | <a href="#">57.1949, 0.3373, 0.3443</a>                      |
| Android<br>(android.graphics.Color) | <a href="#">4292265143</a><br>( <a href="#">0xFFD6C4B7</a> ) |
| YUV                                 | <a href="#">199.9000, -8.3317, 12.3657</a>                   |
| Hunter-Lab                          | <a href="#">75.6273, -0.1291, 11.4770</a>                    |

# Details

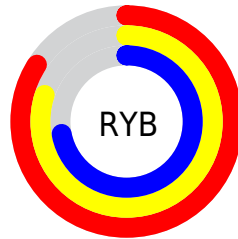
The Hex color **D6C4B7** is a light color, and the websafe version is hex **CCCCCC**. A complement of this color would be **B7C9D6**, and the grayscale version is **C8C8C8**.

A 20% lighter version of the original color is **FFFDEF**, and **9F8E82** is the 20% darker color. If you saturate the color by 10%, you get **D6B8A2**, and if you desaturate by 10%, it is **D6D0CC**.

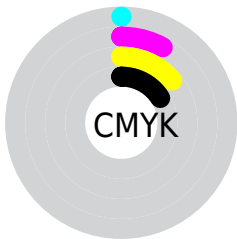
# Distribution



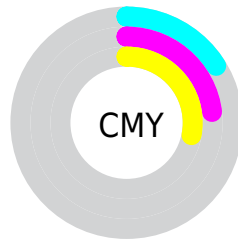
- Red (84%)
- Green (77%)
- Blue (72%)



- Red (84%)
- Yellow (80%)
- Blue (72%)



- Cyan (0%)
- Magenta (8%)
- Yellow (14%)
- Black (16%)



- Cyan (16%)
- Magenta (23%)
- Yellow (28%)

# Brightness & Saturation Gradients

These gradients show how the Hex color D6C4B7 changes by changing the brightness by 10 percent. The first figure shows a shift by +10% for each color and the second figure -10%.

Similar to the brightness gradients but the following saturation gradients show a change of the Hex color D6C4B7 by changing the saturation by 10% instead.



 D6C4B7

FFFFFF

 FFFDEF

 D6C4B7

 BAA99C

 9F8E82

 857569

 6B5C51

 53453A

 3B2E24

 261A0F

 0C0000

 000000

 D6C4B7

 D6C4B7

 D6B8A2

 D6D0CC

 D6AB8C

 D6DDE2

 D69F77

 D6E9F7

 D69261

 D6F6FF

 D6864C

 D6FFFF

 D67937

 D66D21

 D6610C

 D65A00

# Harmonies

## Analogous

The Analogous color harmony consists of three colors that are next to each other on the color wheel.



DBC2BD



D6C4B7



CDC7B5

# Triad

The Triadic color harmony groups three colors that are evenly spaced from another and form a triangle on the color wheel.



D6C4B7



B2CDC8



CBC4D6

# Complementary

The Complementary color scheme is a pair of colors which are on the opposite of each other on the color wheel.



D6C4B7



B7C9D6

# Split Complementary

Split-complementary colors differ from the complementary color scheme. The scheme consists of three colors, the original color and two neighbors of the complement color.



C0C7D9



D6C4B7



B1CCD1

# Square

The Square scheme is like the rectangle color scheme, but the four colors are evenly spaced on the color wheel.



D6C4B7



B9CCBF



B6CAD7



D5C2CF

# Rectangle

The Rectangle color scheme consists of four colors that form a rectangle on the color wheel.



D6C4B7



C6C9B7



B6CAD7



C7C5D8



# Sweetspot

The Sweet Spot groups the original color and five complimentary colors.



D6C4B7



FFF9F5



D6B7C9



807C79



000000



808080

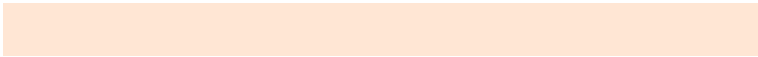


# Same Dimension

The Same Dimension uses a secret algorithm to generate beautiful new colors.



D6C4B7



FFE6D4



D6D3B7



6B6560



AB4800



2B1200

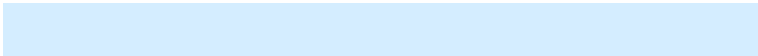


# Inverse Universe

The Inverse Universe completely reimagines the original color for something new.



B7C9D6



D4EDFF



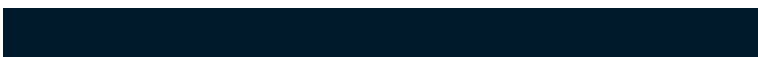
B7BAD6



60676B



0063AB

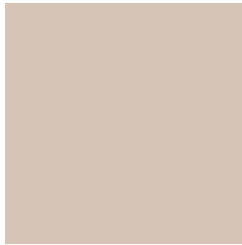


00192B



# Previews

## White Background



This preview shows how the Hex color D6C4B7 looks on a white background.

## Color Contrast Check

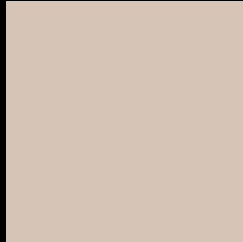
Large Text (above 18pt) WCAG AA × Fail

Any Text WCAG AA × Fail

Large Text (above 18pt) WCAG AAA × Fail

Any Text WCAG AAA × Fail

# Black Background



This preview shows how the Hex color D6C4B7 looks on a black background.

## Color Contrast Check

Large Text (above 18pt) WCAG AA ✓ Pass

Any Text WCAG AA ✓ Pass

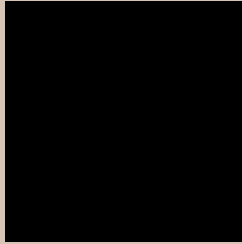
Large Text (above 18pt) WCAG AAA ✓ Pass

Any Text WCAG AAA ✓ Pass

If you want to check with other color combinations, try the [Color Contrast Checker](#).



## Hex D6C4B7 Background



This preview shows how black text looks on a background with the Hex color D6C4B7.

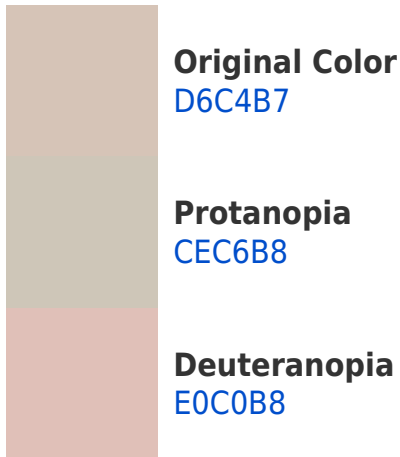


This preview shows how white text looks on a background with the Hex color D6C4B7.

# Color Blindness Simulation

Color vision deficiency is a very complex topic, and I could not describe the different causes any better than Wikipedia does, so if you want to learn more, you should check out their [article about color blindness](#).

## Dichromacy





**Tritanopia**  
D9C0CF

# Trichromacy



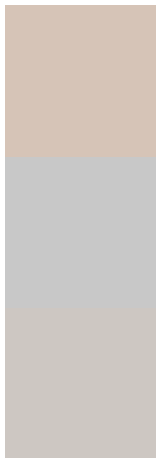
**Original Color**  
D6C4B7

**Protanomaly**  
D1C5B8

**Deuteranomaly**  
DCC1B8

**Tritanomaly**  
D8C1C6

# Monochromacy



**Original Color**  
D6C4B7

**Achromatopsia**  
C8C8C8

**Achromatomaly**  
CDC7C2

# CSS Examples

## Text

The CSS property to change the color of the text to Hex D6C4B7 is called "color". The color property can be set on classes, ids or directly on the HTML element.

This example shows how text in the color #D6C4B7 looks like.

```
.text, #text, p{  
    color:#D6C4B7  
}
```

If you want to add a text shadow in that color use the text-shadow property, you can generate a text shadow directly with our [CSS Text Shadow Generator](#).

Here you see how black text with a 4 pixel #D6C4B7 colored shadow looks like.

```
.shadow{ text-shadow: 4px 4px 2px #D6C4B7
}
```

## Border

The CSS property to change the border of an element to Hex D6C4B7 is called "border". The border property can be set on classes, ids or directly on the HTML element.

This example shows the color as border, it can be applied via the CSS property "border" or "border-color".

```
.border, #border, table{ border:4px solid
#D6C4B7 }
```

If only the border color should be changed use the property `border-color`.

```
.border{ border-color:#D6C4B7 }
```

If you want to add a box shadow in that color use:

Here you see how a box with a 4 pixel #D6C4B7 colored shadow looks like.

```
.boxshadow{ -moz-box-shadow:4px 4px 4px  
4px #D6C4B7; -webkit-box-shadow:4px 4px  
4px 4px #D6C4B7; box-shadow:4px 4px 4px  
4px #D6C4B7 }
```

# Background

The CSS property to change the background color of an element to Hex D6C4B7 is called "background". The background property can be set on classes, ids or directly on the HTML element.

```
.background, #background, body{  
background:#D6C4B7 }
```

If only the background color should be changed can be used:

```
.background{ background-color:#D6C4B7 }
```

This example shows the color as background, it is applied via the CSS property "background".

To optimize and compress your CSS code, you can use our [online CSS compressor and optimizer](#) based on csstidy. If you want to create a linear or radial gradient as background or border, check our [CSS Gradient Generator](#).



Hey! You found this booklet interesting? Support Converting Colors with the new Membership Option!

The pro membership hides all ads, plus gives you double the colors in the color bucket, and more awesome pro features!

**[Learn more, Memberships starting at \\$2.50/m!](#)**

**Follow me  
on Twitter!**

@ConvertingColor