

Converting Colors

Hex(D6C7C7)

Have a look what the booklet for
Hex(D6C7C7) contains.

Hex(D6C7C7)	3
<i>Conversions</i>	4
<i>Details</i>	6
<i>Harmonies</i>	11
<i>Previews</i>	23
<i>Color Blindness Simulation</i>	26
<i>CSS Examples</i>	29

Color

Hex(D6C7C7)

Conversions

Conversions Part 1

Format	Color
Hex	D6C7C7
RGB	214, 199, 199
RGB Percent	84%, 78%, 78%
CMY	0.1608, 0.2196, 0.2196
CMYK	0.00, 0.07, 0.07, 0.16
HSL	0°, 15%, 81%
HSV	0°, 7%, 84%
XYZ	58.4638, 59.2665, 62.3910
YIQ	203.4850, 8.9400, 3.1800

Conversions

Conversions Part 2

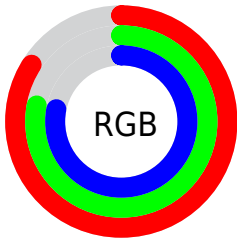
Format	Color
R _Y B	214, 199, 199
Decimal	14075847
CIE Lab	81.44, 5.23, 1.88
CIE LCh	81, 5.562, 19.736
Yxy	59.2665, 0.3246, 0.3290
Android (android.graphics.Color)	4292265927 (0xFFD6C7C7)
YUV	203.4850, -2.2111, 9.2217
Hunter-Lab	76.9847, 0.8332, 5.8387

Details

The Hex color **D6C7C7** is a light color, and the websafe version is hex **CCCCCC**. A complement of this color would be **C7D6D6**, and the grayscale version is **CCCCCC**.

A 20% lighter version of the original color is **FFFFFF**, and **9F9191** is the 20% darker color. If you saturate the color by 10%, you get **D6B2B2**, and if you desaturate by 10%, it is **D6DCDC**.

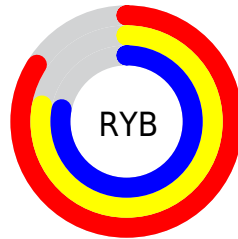
Distribution



Red (84%)

Green (78%)

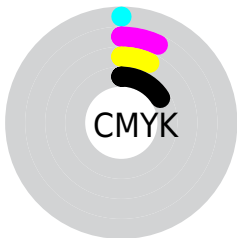
Blue (78%)



Red (84%)

Yellow (78%)

Blue (78%)

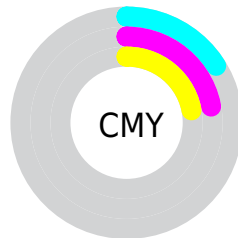


Cyan (0%)

Magenta (7%)

Yellow (7%)

Black (16%)



Cyan (16%)

Magenta (22%)

Yellow (22%)

Brightness & Saturation Gradients

These gradients show how the Hex color D6C7C7 changes by changing the brightness by 10 percent. The first figure shows a shift by +10% for each color and the second figure -10%.

Similar to the brightness gradients but the following saturation gradients show a change of the Hex color D6C7C7 by changing the saturation by 10% instead.

 D6C7C7

FFFFFF

 D6C7C7

 BAACAC

 9F9191

 857778

 6C5F5F

 534747

 3C3131

 261C1C

 130101

 000000

 D6C7C7

 D6C7C7

 D6B2B2

 D6DCDC

 D69C9C

 D6F2F2

 D68787

 D6FFFF

 D67171

 D65C5C

 D64747

 D63131

 D61C1C

 D60606

Harmonies

Analogous

The Analogous color harmony consists of three colors that are next to each other on the color wheel.



D4C7CC



D6C7C7



D5C8C3

Triad

The Triadic color harmony groups three colors that are evenly spaced from another and form a triangle on the color wheel.



D6C7C7



C5CDC3



C3CBD4

Complementary

The Complementary color scheme is a pair of colors which are on the opposite of each other on the color wheel.



D6C7C7



C7D6D6

Split Complementary

Split-complementary colors differ from the complementary color scheme. The scheme consists of three colors, the original color and two neighbors of the complement color.



BFCDD2



D6C7C7



C0CDC8

Square

The Square scheme is like the rectangle color scheme, but the four colors are evenly spaced on the color wheel.



D6C7C7



CBCBC1



BECDCE



C9CAD4

Rectangle

The Rectangle color scheme consists of four colors that form a rectangle on the color wheel.



D6C7C7



D2C9C1



BECDCE



C2CCD4

Sweetspot

The Sweet Spot groups the original color and five complimentary colors.



D6C7C7



FFFAFA



D6C7D6



807D7D



000000



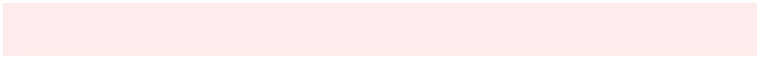
808080

Same Dimension

The Same Dimension uses a secret algorithm to generate beautiful new colors.



D6C7C7



FFE8E8



D6CFC7



6B6060



AB0000



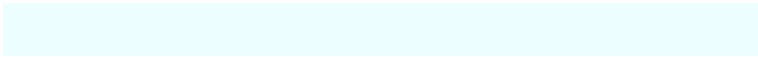
2B0000

Inverse Universe

The Inverse Universe completely reimagines the original color for something new.



C7D6D6



EBFFFF



C7CFD6



606B6B



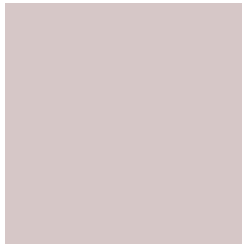
00ABAB



002B2B

Previews

White Background



This preview shows how the Hex color D6C7C7 looks on a white background.

Color Contrast Check

Large Text (above 18pt) WCAG AA × Fail

Any Text WCAG AA × Fail

Large Text (above 18pt) WCAG AAA × Fail

Any Text WCAG AAA × Fail

Black Background



This preview shows how the Hex color D6C7C7 looks on a black background.

Color Contrast Check

Large Text (above 18pt) WCAG AA ✓ Pass

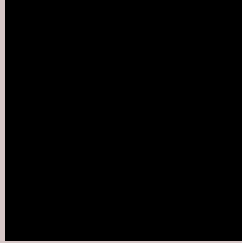
Any Text WCAG AA ✓ Pass

Large Text (above 18pt) WCAG AAA ✓ Pass

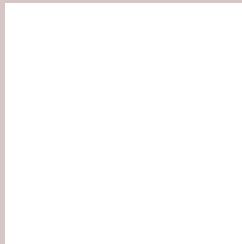
Any Text WCAG AAA ✓ Pass

If you want to check with other color combinations, try the [Color Contrast Checker](#).

Hex D6C7C7 Background



This preview shows how black text looks on a background with the Hex color D6C7C7.

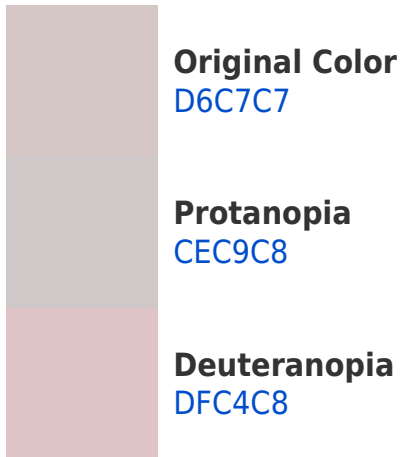


This preview shows how white text looks on a background with the Hex color D6C7C7.

Color Blindness Simulation

Color vision deficiency is a very complex topic, and I could not describe the different causes any better than Wikipedia does, so if you want to learn more, you should check out their [article about color blindness](#).

Dichromacy





Tritanopia
D8C5D4

Trichromacy



Original Color
D6C7C7

Protanomaly
D1C8C8

Deuteranomaly
DCC5C8

Tritanomaly
D7C6CF

Monochromacy



Original Color
D6C7C7

Achromatopsia
CBCBCB

Achromatomaly
CFCACA

CSS Examples

Text

The CSS property to change the color of the text to Hex D6C7C7 is called "color". The color property can be set on classes, ids or directly on the HTML element.

This example shows how text in the color #D6C7C7 looks like.

```
.text, #text, p{  
    color:#D6C7C7  
}
```

If you want to add a text shadow in that color use the text-shadow property, you can generate a text shadow directly with our [CSS Text Shadow Generator](#).

Here you see how black text with a 4 pixel #D6C7C7 colored shadow looks like.

```
.shadow{ text-shadow: 4px 4px 2px #D6C7C7  
}
```

Border

The CSS property to change the border of an element to Hex D6C7C7 is called "border". The border property can be set on classes, ids or directly on the HTML element.

This example shows the color as border, it can be applied via the CSS property "border" or "border-color".

```
.border, #border, table{ border:4px solid  
#D6C7C7 }
```

If only the border color should be changed use the property `border-color`.

```
.border{ border-color:#D6C7C7 }
```

If you want to add a box shadow in that color use:

Here you see how a box with a 4 pixel #D6C7C7 colored shadow looks like.

```
.boxshadow{ -moz-box-shadow:4px 4px 4px  
4px #D6C7C7; -webkit-box-shadow:4px 4px  
4px 4px #D6C7C7; box-shadow:4px 4px 4px  
4px #D6C7C7 }
```

Background

The CSS property to change the background color of an element to Hex D6C7C7 is called "background". The background property can be set on classes, ids or directly on the HTML element.

```
.background, #background, body{  
background:#D6C7C7 }
```

If only the background color should be changed can be used:

```
.background{ background-color:#D6C7C7 }
```

This example shows the color as background, it is applied via the CSS property "background".

To optimize and compress your CSS code, you can use our [online CSS compressor and optimizer](#) based on csstidy. If you want to create a linear or radial gradient as background or border, check our [CSS Gradient Generator](#).

Hey! You found this booklet interesting? Support Converting Colors with the new Membership Option!

The pro membership hides all ads, plus gives you double the colors in the color bucket, and more awesome pro features!

[Learn more, Memberships starting at \\$2.50/m!](#)

**Follow me
on Twitter!**

@ConvertingColor