

# Converting Colors

Hex(D6C7C9)

Have a look what the booklet for  
Hex(D6C7C9) contains.

<b>Hex(D6C7C9)</b> .....	3
<b><i>Conversions</i></b> .....	4
<b><i>Details</i></b> .....	6
<b><i>Harmonies</i></b> .....	11
<b><i>Previews</i></b> .....	23
<b><i>Color Blindness Simulation</i></b> .....	26
<b><i>CSS Examples</i></b> .....	29

# **Color**

**Hex(D6C7C9)**

# Conversions

## Conversions Part 1

Format	Color
Hex	D6C7C9
RGB	214, 199, 201
RGB Percent	84%, 78%, 79%
CMY	0.1608, 0.2196, 0.2118
CMYK	0.00, 0.07, 0.06, 0.16
HSL	352°, 15%, 81%
HSV	352°, 7%, 84%
XYZ	58.6976, 59.3600, 63.6223
YIQ	203.7130, 8.2980, 3.8020

# Conversions

## Conversions Part 2

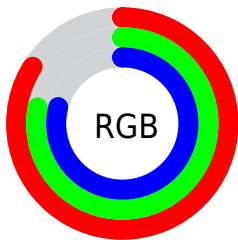
<b>Format</b>	<b>Color</b>
<b>R<sub>YB</sub></b>	214, 199, 201
Decimal	14075849
CIE Lab	81.49, 5.58, 0.88
CIE LCh	81, 5.649, 8.969
Yxy	59.3600, 0.3231, 0.3267
Android (android.graphics.Color)	4292265929 (0xFFD6C7C9)
YUV	203.7130, -1.3375, 9.0217
Hunter-Lab	77.0455, 1.1618, 4.9716

# Details

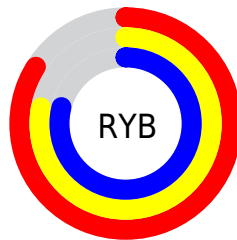
The Hex color **D6C7C9** is a light color, and the websafe version is hex **CCCCCC**. A complement of this color would be **C7D6D4**, and the grayscale version is **CCCCCC**.

A 20% lighter version of the original color is **FFFFFF**, and **9F9193** is the 20% darker color. If you saturate the color by 10%, you get **D6B2B6**, and if you desaturate by 10%, it is **D6DCDC**.

# Distribution



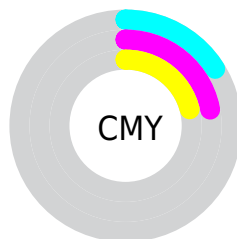
- Red (84%)
- Green (78%)
- Blue (79%)



- Red (84%)
- Yellow (78%)
- Blue (79%)



- Cyan (0%)
- Magenta (7%)
- Yellow (6%)
- Black (16%)



- Cyan (16%)
- Magenta (22%)
- Yellow (21%)

# Brightness & Saturation Gradients

These gradients show how the Hex color D6C7C9 changes by changing the brightness by 10 percent. The first figure shows a shift by +10% for each color and the second figure -10%.

Similar to the brightness gradients but the following saturation gradients show a change of the Hex color D6C7C9 by changing the saturation by 10% instead.



 D6C7C9

FFFFFF

 D6C7C9

 BAACAE

 9F9193

 857779

 6C5F61

 534749

 3C3132

 261C1D

 130104

 000000

 D6C7C9

 D6C7C9

 D6B2B6

 D6DCDC

 D69CA4

 D6F2EE

 D68791

 D6FFFF

 D6717F

 D65C6C

 D6475A

 D63147

 D61C35

 D60622

# Harmonies

## Analogous

The Analogous color harmony consists of three colors that are next to each other on the color wheel.



D3C7CE



D6C7C9



D6C8C4

# Triad

The Triadic color harmony groups three colors that are evenly spaced from another and form a triangle on the color wheel.



D6C7C9



C7CCC2



C1CCD4

# Complementary

The Complementary color scheme is a pair of colors which are on the opposite of each other on the color wheel.



D6C7C9



C7D6D4

# Split Complementary

Split-complementary colors differ from the complementary color scheme. The scheme consists of three colors, the original color and two neighbors of the complement color.



BECD1



D67C9



C2DC6

# Square

The Square scheme is like the rectangle color scheme, but the four colors are evenly spaced on the color wheel.



D6C7C9



CDCBC0



BECECC



C7CAD5

# Rectangle

The Rectangle color scheme consists of four colors that form a rectangle on the color wheel.



D6C7C9



D4C8C2



BECECC



C0CDD3



# Sweetspot

The Sweet Spot groups the original color and five complimentary colors.



D6C7C9



FFFAFB



D4C7D6



807D7D



000000



808080



# Same Dimension

The Same Dimension uses a secret algorithm to generate beautiful new colors.



D6C7C9



FFEDED



D6CDC7



6B6062



AB0017



2B0006



# Inverse Universe

The Inverse Universe completely reimagines the original color for something new.



D6C7C9



FFEDED



C7D1D6



6B6062



AB0017

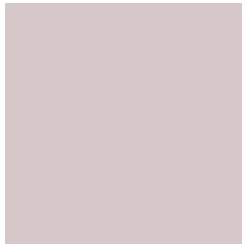


2B0006



# Previews

## White Background



This preview shows how the Hex color D6C7C9 looks on a white background.

## Color Contrast Check

Large Text (above 18pt) WCAG AA × Fail

Any Text WCAG AA × Fail

Large Text (above 18pt) WCAG AAA × Fail

Any Text WCAG AAA × Fail

# Black Background



This preview shows how the Hex color D6C7C9 looks on a black background.

## Color Contrast Check

Large Text (above 18pt) WCAG AA ✓ Pass

Any Text WCAG AA ✓ Pass

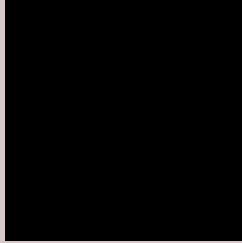
Large Text (above 18pt) WCAG AAA ✓ Pass

Any Text WCAG AAA ✓ Pass

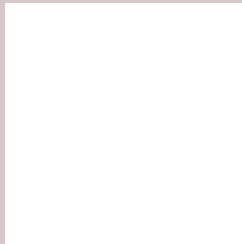
If you want to check with other color combinations, try the [Color Contrast Checker](#).



## Hex D6C7C9 Background



This preview shows how black text looks on a background with the Hex color D6C7C9.

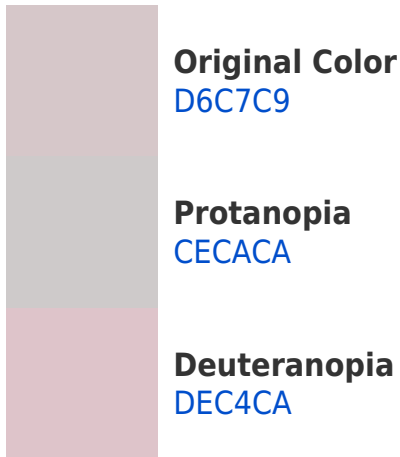


This preview shows how white text looks on a background with the Hex color D6C7C9.

# Color Blindness Simulation

Color vision deficiency is a very complex topic, and I could not describe the different causes any better than Wikipedia does, so if you want to learn more, you should check out their [article about color blindness](#).

## Dichromacy





**Tritanopia**  
D8C5D5

# Trichromacy



**Original Color**  
D6C7C9

**Protanomaly**  
D1C9CA

**Deuteranomaly**  
DBC5CA

**Tritanomaly**  
D7C6D1

# Monochromacy



**Original Color**  
D6C7C9

**Achromatopsia**  
CCCCCC

**Achromatomaly**  
D0CACB

# CSS Examples

## Text

The CSS property to change the color of the text to Hex D6C7C9 is called "color". The color property can be set on classes, ids or directly on the HTML element.

This example shows how text in the color #D6C7C9 looks like.

```
.text, #text, p{  
    color:#D6C7C9  
}
```

If you want to add a text shadow in that color use the text-shadow property, you can generate a text shadow directly with our [CSS Text Shadow Generator](#).

Here you see how black text with a 4 pixel #D6C7C9 colored shadow looks like.

```
.shadow{ text-shadow: 4px 4px 2px #D6C7C9
}
```

## Border

The CSS property to change the border of an element to Hex D6C7C9 is called "border". The border property can be set on classes, ids or directly on the HTML element.

This example shows the color as border, it can be applied via the CSS property "border" or "border-color".

```
.border, #border, table{ border:4px solid
#D6C7C9 }
```

If only the border color should be changed use the property `border-color`.

```
.border{ border-color:#D6C7C9 }
```

If you want to add a box shadow in that color use:

Here you see how a box with a 4 pixel #D6C7C9 colored shadow looks like.

```
.boxshadow{ -moz-box-shadow:4px 4px 4px  
4px #D6C7C9; -webkit-box-shadow:4px 4px  
4px 4px #D6C7C9; box-shadow:4px 4px 4px  
4px #D6C7C9 }
```

# Background

The CSS property to change the background color of an element to Hex D6C7C9 is called "background". The background property can be set on classes, ids or directly on the HTML element.

```
.background, #background, body{  
background:#D6C7C9 }
```

If only the background color should be changed can be used:

```
.background{ background-color:#D6C7C9 }
```

This example shows the color as background, it is applied via the CSS property "background".

To optimize and compress your CSS code, you can use our [online CSS compressor and optimizer](#) based on csstidy. If you want to create a linear or radial gradient as background or border, check our [CSS Gradient Generator](#).



Hey! You found this booklet interesting? Support Converting Colors with the new Membership Option!

The pro membership hides all ads, plus gives you double the colors in the color bucket, and more awesome pro features!

**[Learn more, Memberships starting at \\$2.50/m!](#)**

**Follow me  
on Twitter!**

@ConvertingColor