

Converting Colors

Hex(D6C8C0)

Have a look what the booklet for
Hex(D6C8C0) contains.

Hex(D6C8C0)	3
<i>Conversions</i>	4
<i>Details</i>	6
<i>Harmonies</i>	11
<i>Previews</i>	23
<i>Color Blindness Simulation</i>	26
<i>CSS Examples</i>	29

Color

Hex(D6C8C0)

Conversions

Conversions Part 1

Format	Color
Hex	D6C8C0
RGB	214, 200, 192
RGB Percent	84%, 78%, 75%
CMY	0.1608, 0.2157, 0.2471
CMYK	0.00, 0.07, 0.10, 0.16
HSL	22°, 21%, 80%
HSV	22°, 10%, 84%
XYZ	57.9003, 59.4105, 58.2849
YIQ	203.2740, 10.9120, 0.4800

Conversions

Conversions Part 2

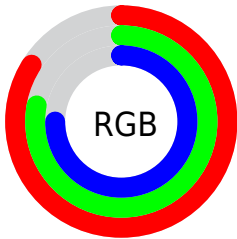
Format	Color
R_{YB}	214, 205, 192
Decimal	14076096
CIE _{Lab}	81.52, 3.52, 5.74
CIE _{LCh}	82, 6.737, 58.455
Yxy	59.4105, 0.3297, 0.3383
Android (android.graphics.Color)	4292266176 (0xFFD6C8C0)
YUV	203.2740, -5.5581, 9.4067
Hunter-Lab	77.0782, -0.7996, 9.1209

Details

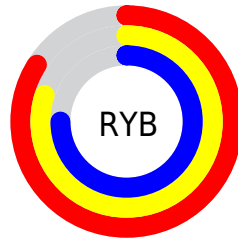
The Hex color **D6C8C0** is a light color, and the websafe version is hex **CCCCCC**. A complement of this color would be **C0CED6**, and the grayscale version is **CBCBCB**.

A 20% lighter version of the original color is **FFFFFF8**, and **9F928B** is the 20% darker color. If you saturate the color by 10%, you get **D6BAAB**, and if you desaturate by 10%, it is **D6D6D5**.

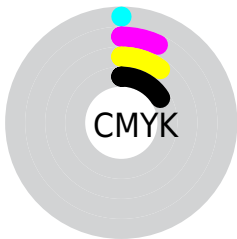
Distribution



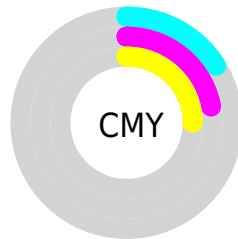
- Red (84%)
- Green (78%)
- Blue (75%)



- Red (84%)
- Yellow (80%)
- Blue (75%)



- Cyan (0%)
- Magenta (7%)
- Yellow (10%)
- Black (16%)



- Cyan (16%)
- Magenta (22%)
- Yellow (25%)

Brightness & Saturation Gradients

These gradients show how the Hex color D6C8C0 changes by changing the brightness by 10 percent. The first figure shows a shift by +10% for each color and the second figure -10%.

Similar to the brightness gradients but the following saturation gradients show a change of the Hex color D6C8C0 by changing the saturation by 10% instead.

 D6C8C0

 D6C8C0

FFFFFFF

 BAADA5

 FFFFFF8

 9F928B

 857871

 6C6059

 534841

 3C322B

 261D17

 100300

 000000

 D6C8C0

 D6C8C0

 D6BAAB

 D6D6D5

 D6AD95

 D6E3EB

 D69F80

 D6F1FF

 D6926A

 D6FEFF

 D68455

 D6FFFF

 D67640

 D6692A

 D65B15

 D64E00

Harmonies

Analogous

The Analogous color harmony consists of three colors that are next to each other on the color wheel.



D9C7C5



D6C8C0



D0CABE

Triad

The Triadic color harmony groups three colors that are evenly spaced from another and form a triangle on the color wheel.



D6C8C0



BDCECA



CCC9D6

Complementary

The Complementary color scheme is a pair of colors which are on the opposite of each other on the color wheel.



D6C8C0



C0CED6

Split Complementary

Split-complementary colors differ from the complementary color scheme. The scheme consists of three colors, the original color and two neighbors of the complement color.



C4CBD7



D6C8C0



BBCED0

Square

The Square scheme is like the rectangle color scheme, but the four colors are evenly spaced on the color wheel.



D6C8C0



C2CEC4



BECDD5



D3C7D1

Rectangle

The Rectangle color scheme consists of four colors that form a rectangle on the color wheel.



D6C8C0



CCCBBF



BECDD5



C9CAD6

Sweetspot

The Sweet Spot groups the original color and five complimentary colors.



D6C8C0



FFFAF7



D6C0CE



807C7A



000000



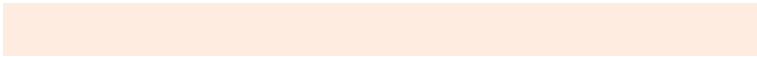
808080

Same Dimension

The Same Dimension uses a secret algorithm to generate beautiful new colors.



D6C8C0



FFECE0



D6D3C0



6B6460



AB3E00



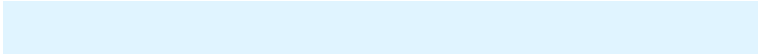
2B1000

Inverse Universe

The Inverse Universe completely reimagines the original color for something new.



C0CED6



E0F4FF



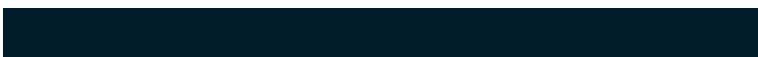
C0C3D6



60676B



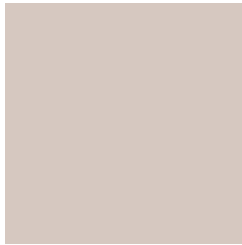
006DAB



001C2B

Previews

White Background



This preview shows how the Hex color D6C8C0 looks on a white background.

Color Contrast Check

Large Text (above 18pt) WCAG AA × Fail

Any Text WCAG AA × Fail

Large Text (above 18pt) WCAG AAA × Fail

Any Text WCAG AAA × Fail

Black Background



This preview shows how the Hex color D6C8C0 looks on a black background.

Color Contrast Check

Large Text (above 18pt) WCAG AA ✓ Pass

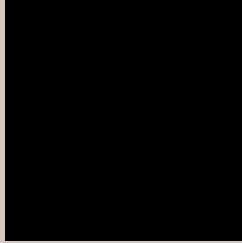
Any Text WCAG AA ✓ Pass

Large Text (above 18pt) WCAG AAA ✓ Pass

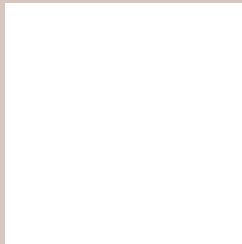
Any Text WCAG AAA ✓ Pass

If you want to check with other color combinations, try the [Color Contrast Checker](#).

Hex D6C8C0 Background



This preview shows how black text looks on a background with the Hex color D6C8C0.

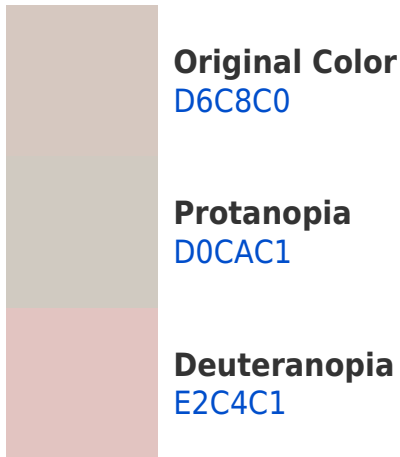


This preview shows how white text looks on a background with the Hex color D6C8C0.

Color Blindness Simulation

Color vision deficiency is a very complex topic, and I could not describe the different causes any better than Wikipedia does, so if you want to learn more, you should check out their [article about color blindness](#).

Dichromacy





Tritanopia
D9C5D4

Trichromacy



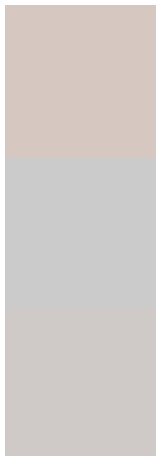
Original Color
D6C8C0

Protanomaly
D2C9C1

Deuteranomaly
DEC5C1

Tritanomaly
D8C6CD

Monochromacy



Original Color
D6C8C0

Achromatopsia
CBCBCB

Achromatomaly
CFCAC7

CSS Examples

Text

The CSS property to change the color of the text to Hex D6C8C0 is called "color". The color property can be set on classes, ids or directly on the HTML element.

This example shows how text in the color #D6C8C0 looks like.

```
.text, #text, p{  
    color:#D6C8C0  
}
```

If you want to add a text shadow in that color use the text-shadow property, you can generate a text shadow directly with our [CSS Text Shadow Generator](#).

Here you see how black text with a 4 pixel #D6C8C0 colored shadow looks like.

```
.shadow{ text-shadow: 4px 4px 2px #D6C8C0
}
```

Border

The CSS property to change the border of an element to Hex D6C8C0 is called "border". The border property can be set on classes, ids or directly on the HTML element.

This example shows the color as border, it can be applied via the CSS property "border" or "border-color".

```
.border, #border, table{ border:4px solid
#D6C8C0 }
```

If only the border color should be changed use the property `border-color`.

```
.border{ border-color:#D6C8C0 }
```

If you want to add a box shadow in that color use:

Here you see how a box with a 4 pixel #D6C8C0 colored shadow looks like.

```
.boxshadow{ -moz-box-shadow:4px 4px 4px  
4px #D6C8C0; -webkit-box-shadow:4px 4px  
4px 4px #D6C8C0; box-shadow:4px 4px 4px  
4px #D6C8C0 }
```

Background

The CSS property to change the background color of an element to Hex D6C8C0 is called "background". The background property can be set on classes, ids or directly on the HTML element.

```
.background, #background, body{  
background:#D6C8C0 }
```

If only the background color should be changed can be used:

```
.background{ background-color:#D6C8C0 }
```

This example shows the color as background, it is applied via the CSS property "background".

To optimize and compress your CSS code, you can use our [online CSS compressor and optimizer](#) based on csstidy. If you want to create a linear or radial gradient as background or border, check our [CSS Gradient Generator](#).

Hey! You found this booklet interesting? Support Converting Colors with the new Membership Option!

The pro membership hides all ads, plus gives you double the colors in the color bucket, and more awesome pro features!

[Learn more, Memberships starting at \\$2.50/m!](#)

**Follow me
on Twitter!**

@ConvertingColor