

# Converting Colors

Hex(D75B75)

Have a look what the booklet for  
Hex(D75B75) contains.

<b>Hex(D75B75)</b> .....	3
<i><b>Conversions</b></i> .....	4
<i><b>Details</b></i> .....	6
<i><b>Harmonies</b></i> .....	11
<i><b>Previews</b></i> .....	23
<i><b>Color Blindness Simulation</b></i> .....	26
<i><b>CSS Examples</b></i> .....	29

**Color**

**Hex(D75B75)**

# Conversions

## Conversions Part 1

<b>Format</b>	<b>Color</b>
Hex	D75B75
RGB	215, 91, 117
RGB Percent	84%, 36%, 46%
CMY	0.1569, 0.6431, 0.5412
CMYK	0.00, 0.58, 0.46, 0.16
HSL	347°, 61%, 60%
HSV	347°, 58%, 84%
XYZ	34.9763, 23.2136, 19.4668
YIQ	131.0400, 65.5580, 34.3740

# Conversions

## Conversions Part 2

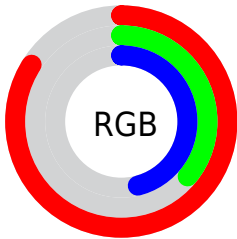
<b>Format</b>	<b>Color</b>
<b>R<sub>YB</sub></b>	215, 91, 117
Decimal	14113653
CIE Lab	55.29, 51.01, 10.25
CIE LCh	55, 52.029, 11.358
Yxy	23.2136, 0.4504, 0.2989
Android (android.graphics.Color)	4292303733 (0xFFD75B75)
YUV	131.0400, -6.9217, 73.6329
Hunter-Lab	48.1805, 45.2650, 9.7708

# Details

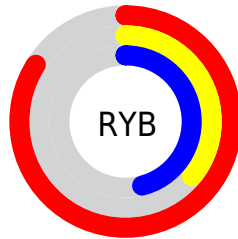
The Hex color **D75B75** is a dark color, and the websafe version is hex **CC6666**. The color can be described as middle muted rose. A complement of this color would be **5BD7BD**, and the grayscale version is **838383**.

A 20% lighter version of the original color is **FF91A9**, and **9C2345** is the 20% darker color. If you saturate the color by 10%, you get **D74664**, and if you desaturate by 10%, it is **D77186**.

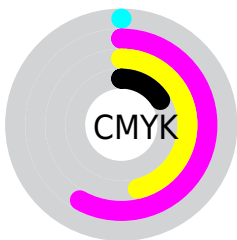
# Distribution



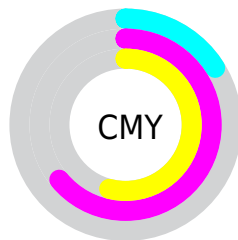
- Red (84%)
- Green (36%)
- Blue (46%)



- Red (84%)
- Yellow (36%)
- Blue (46%)



- Cyan (0%)
- Magenta (58%)
- Yellow (46%)
- Black (16%)



- Cyan (16%)
- Magenta (64%)
- Yellow (54%)

# Brightness & Saturation Gradients

These gradients show how the Hex color D75B75 changes by changing the brightness by 10 percent. The first figure shows a shift by +10% for each color and the second figure -10%.

Similar to the brightness gradients but the following saturation gradients show a change of the Hex color D75B75 by changing the saturation by 10% instead.



 D75B75

 D75B75

FFFFFF

 B9405C

 FF91A9

 9C2345

 FFADC4

 7F002F

 FFCAE0

 62001B

 FFE7FD

 470000

 2B0001

 000000

 D75B75

 D75B75

 D74664

 D77186

 D73053

 D78697

 D71B42

 D79CA8

 D70531

 D7B1B9

 D7002D

 D7C7CA

 D7DCDB

 D7F2EC

 D7FFFD

 D7FFFF

# Harmonies

## Analogous

The Analogous color harmony consists of three colors that are next to each other on the color wheel.



C860A2



D75B75



CE664B

# Triad

The Triadic color harmony groups three colors that are evenly spaced from another and form a triangle on the color wheel.



D75B75



5B923D



0091DA

# Complementary

The Complementary color scheme is a pair of colors which are on the opposite of each other on the color wheel.



D75B75



5BD7BD

# Split Complementary

Split-complementary colors differ from the complementary color scheme. The scheme consists of three colors, the original color and two neighbors of the complement color.



0098BF



D75B75



009866

# Square

The Square scheme is like the rectangle color scheme, but the four colors are evenly spaced on the color wheel.



D75B75



8C8824



009A95



4D84DD

# Rectangle

The Rectangle color scheme consists of four colors that form a rectangle on the color wheel.



D75B75



BE7234



009A95



0094D3



# Sweetspot

The Sweet Spot groups the original color and five complimentary colors.



D75B75



FFD4DD



BC5BD7



80666B



000000



808080



# Same Dimension

The Same Dimension uses a secret algorithm to generate beautiful new colors.



D75B75



FF4F74



D77E5B



6B6063



AB0024



2B0009



# Inverse Universe

The Inverse Universe completely reimagines the original color for something new.



D75B75



FF4F74



5BB4D7



6B6063



AB0024



2B0009



# Previews

## White Background



This preview shows how the Hex color D75B75 looks on a white background.

## Color Contrast Check

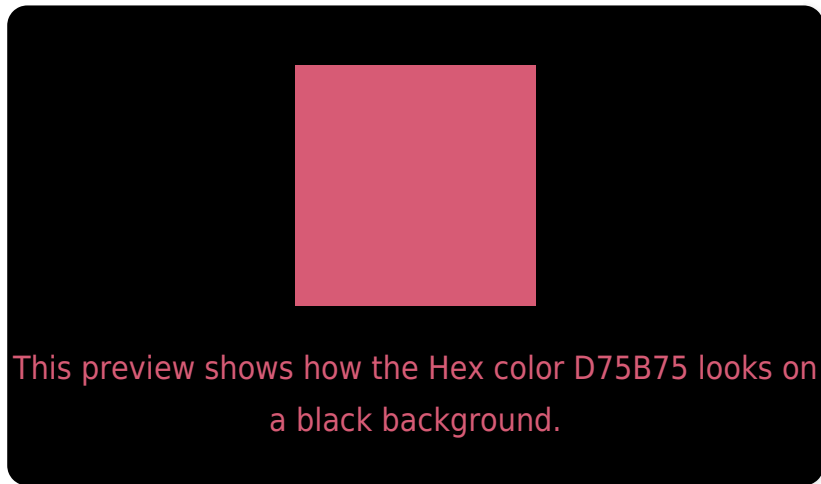
Large Text (above 18pt) WCAG AA ✓ Pass

Any Text WCAG AA × Fail

Large Text (above 18pt) WCAG AAA × Fail

Any Text WCAG AAA × Fail

# Black Background



## Color Contrast Check

Large Text (above 18pt) WCAG AA ✓ Pass

Any Text WCAG AA ✓ Pass

Large Text (above 18pt) WCAG AAA ✓ Pass

Any Text WCAG AAA × Fail

If you want to check with other color combinations, try the [Color Contrast Checker](#).



## Hex D75B75 Background



This preview shows how black text looks on a background with the Hex color D75B75.

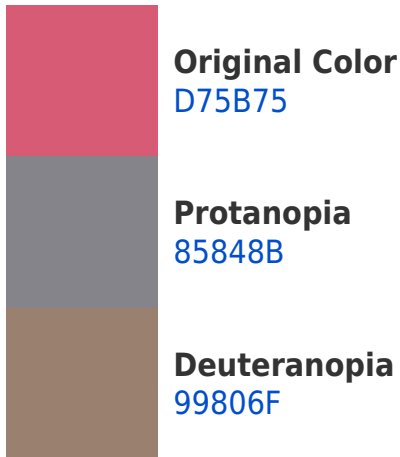



This preview shows how white text looks on a background with the Hex color D75B75.

# Color Blindness Simulation

Color vision deficiency is a very complex topic, and I could not describe the different causes any better than Wikipedia does, so if you want to learn more, you should check out their [article about color blindness](#).

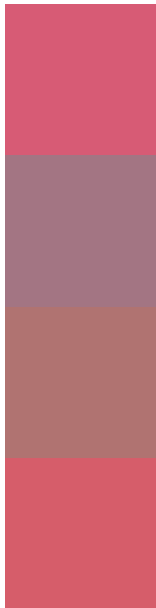
## Dichromacy





**Tritanopia**  
D65E64

# Trichromacy



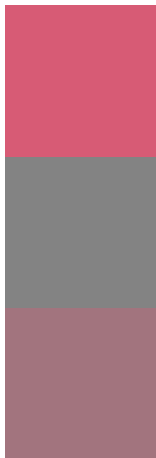
**Original Color**  
D75B75

**Protanomaly**  
A37583

**Deuteranomaly**  
B07371

**Tritanomaly**  
D65D6A

# Monochromacy



**Original Color**  
D75B75

**Achromatopsia**  
838383

**Achromatomaly**  
A2747E

# CSS Examples

## Text

The CSS property to change the color of the text to Hex D75B75 is called "color". The color property can be set on classes, ids or directly on the HTML element.

This example shows how text in the color #D75B75 looks like.

```
.text, #text, p{  
    color:#D75B75  
}
```

If you want to add a text shadow in that color use the text-shadow property, you can generate a text shadow directly with our [CSS Text Shadow Generator](#).

Here you see how black text with a 4 pixel #D75B75 colored shadow looks like.

```
.shadow{ text-shadow: 4px 4px 2px #D75B75  
}
```

## Border

The CSS property to change the border of an element to Hex D75B75 is called "border". The border property can be set on classes, ids or directly on the HTML element.

This example shows the color as border, it can be applied via the CSS property "border" or "border-color".

```
.border, #border, table{ border:4px solid  
#D75B75 }
```

If only the border color should be changed use the property `border-color`.

```
.border{ border-color:#D75B75 }
```

If you want to add a box shadow in that color use:

Here you see how a box with a 4 pixel #D75B75 colored shadow looks like.

```
.boxshadow{ -moz-box-shadow:4px 4px 4px  
4px #D75B75; -webkit-box-shadow:4px 4px  
4px 4px #D75B75; box-shadow:4px 4px 4px  
4px #D75B75 }
```

# Background

The CSS property to change the background color of an element to Hex D75B75 is called "background". The background property can be set on classes, ids or directly on the HTML element.

```
.background, #background, body{  
background:#D75B75 }
```

If only the background color should be changed can be used:

```
.background{ background-color:#D75B75 }
```

This example shows the color as background, it is applied via the CSS property "background".

To optimize and compress your CSS code, you can use our [online CSS compressor and optimizer](#) based on csstidy. If you want to create a linear or radial gradient as background or border, check our [CSS Gradient Generator](#).



Hey! You found this booklet interesting? Support Converting Colors with the new Membership Option!

The pro membership hides all ads, plus gives you double the colors in the color bucket, and more awesome pro features!

**[Learn more, Memberships starting at \\$2.50/m!](#)**

**Follow me  
on Twitter!**

@ConvertingColor