

# Converting Colors

Hex(D7655F)

Have a look what the booklet for  
Hex(D7655F) contains.

<b>Hex(D7655F)</b> .....	3
<b><i>Conversions</i></b> .....	4
<b><i>Details</i></b> .....	6
<b><i>Harmonies</i></b> .....	11
<b><i>Previews</i></b> .....	23
<b><i>Color Blindness Simulation</i></b> .....	26
<b><i>CSS Examples</i></b> .....	29

# Color

**Hex(D7655F)**

# Conversions

## Conversions Part 1

<b>Format</b>	<b>Color</b>
Hex	D7655F
RGB	215, 101, 95
RGB Percent	84%, 40%, 37%
CMY	0.1569, 0.6039, 0.6275
CMYK	0.00, 0.53, 0.56, 0.16
HSL	3°, 60%, 61%
HSV	3°, 56%, 84%
XYZ	34.7436, 24.5807, 13.7398
YIQ	134.4020, 69.8700, 22.3020

# Conversions

## Conversions Part 2

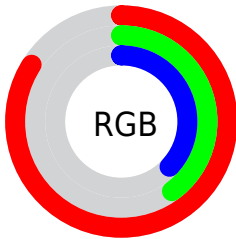
<b>Format</b>	<b>Color</b>
<b>R<sub>YB</sub></b>	215, 101, 95
Decimal	14116191
CIE <sub>Lab</sub>	56.66, 44.30, 24.97
CIE <sub>LCh</sub>	57, 50.848, 29.408
Yxy	24.5807, 0.4755, 0.3364
Android (android.graphics.Color)	4292306271 (0xFFD7655F)
YUV	134.4020, -19.4252, 70.6844
Hunter-Lab	49.5789, 38.3250, 18.2741

# Details

The Hex color **D7655F** is a dark color, and the websafe version is hex **CC6666**. The color can be described as middle muted orange. A complement of this color would be **5FD1D7**, and the grayscale version is **878787**.

A 20% lighter version of the original color is **FF9B92**, and **9B3031** is the 20% darker color. If you saturate the color by 10%, you get **D7514A**, and if you desaturate by 10%, it is **D77975**.

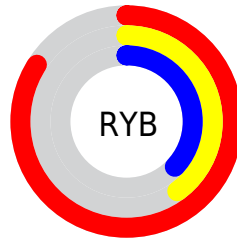
# Distribution



Red (84%)

Green (40%)

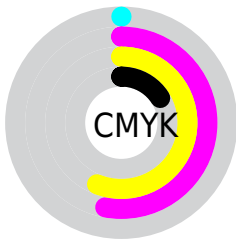
Blue (37%)



Red (84%)

Yellow (40%)

Blue (37%)

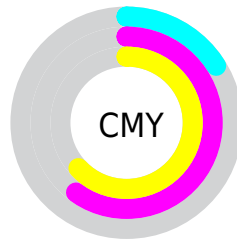


Cyan (0%)

Magenta (53%)

Yellow (56%)

Black (16%)



Cyan (16%)

Magenta (60%)

Yellow (63%)

# Brightness & Saturation Gradients

These gradients show how the Hex color D7655F changes by changing the brightness by 10 percent. The first figure shows a shift by +10% for each color and the second figure -10%.

Similar to the brightness gradients but the following saturation gradients show a change of the Hex color D7655F by changing the saturation by 10% instead.



 D7655F

 D7655F

FFFFFF

 B94B47

 FF9B92

 9B3031

 FFB6AC

 7E131C

 FFD3C7

 610003

 FFF0E4

 450000

 2B0001

 000000

 D7655F

 D7655F

 D7514A

 D77975

 D73C34

 D78E8A

 D7281E

 D7A2A0

 D71309

 D7B7B5

 D70B00

 D7CBCB

 D7E0E0

 D7F4F6

 D7FFFF

# Harmonies

## Analogous

The Analogous color harmony consists of three colors that are next to each other on the color wheel.



D6608B



D7655F



C3753B

# Triad

The Triadic color harmony groups three colors that are evenly spaced from another and form a triangle on the color wheel.



D7655F



369A59



0F8DE0

# Complementary

The Complementary color scheme is a pair of colors which are on the opposite of each other on the color wheel.



D7655F



5FD1D7

# Split Complementary

Split-complementary colors differ from the complementary color scheme. The scheme consists of three colors, the original color and two neighbors of the complement color.



0098D4



D7655F



009D86

# Square

The Square scheme is like the rectangle color scheme, but the four colors are evenly spaced on the color wheel.



D7655F



749236



009DB2



877DD5

# Rectangle

The Rectangle color scheme consists of four colors that form a rectangle on the color wheel.



D7655F



AD802C



009DB2



0091DF



# Sweetspot

The Sweet Spot groups the original color and five complimentary colors.



D7655F



FFD6D4



D75FD1



806766



000000



808080



# Same Dimension

The Same Dimension uses a secret algorithm to generate beautiful new colors.



D7655F



FF5D54



D7A15F



6B6160



AB0900



2B0200



# Inverse Universe

The Inverse Universe completely reimagines the original color for something new.



5FD1D7



54F6FF



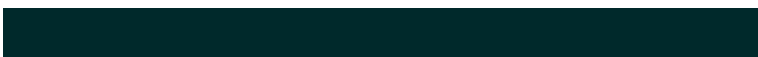
5F95D7



606B6B



00A2AB



00292B



# Previews

## White Background



This preview shows how the Hex color D7655F looks on a white background.

## Color Contrast Check

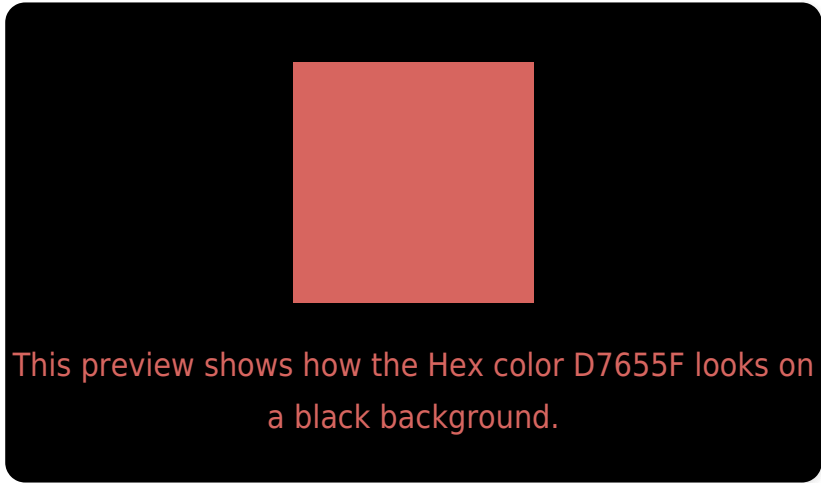
Large Text (above 18pt) WCAG AA ✓ Pass

Any Text WCAG AA × Fail

Large Text (above 18pt) WCAG AAA × Fail

Any Text WCAG AAA × Fail

# Black Background



## Color Contrast Check

Large Text (above 18pt) WCAG AA ✓ Pass

Any Text WCAG AA ✓ Pass

Large Text (above 18pt) WCAG AAA ✓ Pass

Any Text WCAG AAA × Fail

If you want to check with other color combinations, try the [Color Contrast Checker](#).



## Hex D7655F Background



This preview shows how black text looks on a background with the Hex color D7655F.




This preview shows how white text looks on a background with the Hex color D7655F.

# Color Blindness Simulation

Color vision deficiency is a very complex topic, and I could not describe the different causes any better than Wikipedia does, so if you want to learn more, you should check out their [article about color blindness](#).

## Dichromacy



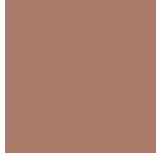


**Tritanopia**  
D8636A

# Trichromacy



**Original Color**  
D7655F



**Protanomaly**  
AA7B69



**Deuteranomaly**  
B7775C

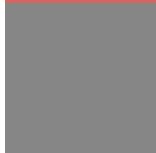


**Tritanomaly**  
D86466

# Monochromacy



**Original Color**  
D7655F



**Achromatopsia**  
868686



**Achromatomaly**  
A37A78

# CSS Examples

## Text

The CSS property to change the color of the text to Hex D7655F is called "color". The color property can be set on classes, ids or directly on the HTML element.

This example shows how text in the color #D7655F looks like.

```
.text, #text, p{  
    color:#D7655F  
}
```

If you want to add a text shadow in that color use the text-shadow property, you can generate a text shadow directly with our [CSS Text Shadow Generator](#).

Here you see how black text with a 4 pixel #D7655F colored shadow looks like.

```
.shadow{ text-shadow: 4px 4px 2px #D7655F
}
```

## Border

The CSS property to change the border of an element to Hex D7655F is called "border". The border property can be set on classes, ids or directly on the HTML element.

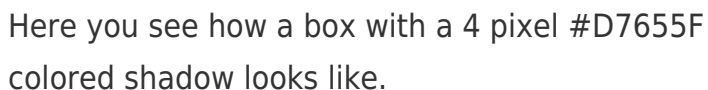
This example shows the color as border, it can be applied via the CSS property "border" or "border-color".

```
.border, #border, table{ border:4px solid
#D7655F }
```

If only the border color should be changed use the property `border-color`.

```
.border{ border-color:#D7655F }
```

If you want to add a box shadow in that color use:



Here you see how a box with a 4 pixel `#D7655F` colored shadow looks like.

```
.boxshadow{ -moz-box-shadow:4px 4px 4px  
4px #D7655F; -webkit-box-shadow:4px 4px  
4px 4px #D7655F; box-shadow:4px 4px 4px  
4px #D7655F }
```

# Background

The CSS property to change the background color of an element to Hex D7655F is called "background". The background property can be set on classes, ids or directly on the HTML element.

```
.background, #background, body{  
background:#D7655F }
```

If only the background color should be changed can be used:

```
.background{ background-color:#D7655F }
```

This example shows the color as background, it is applied via the CSS property "background".

To optimize and compress your CSS code, you can use our [online CSS compressor and optimizer](#) based on csstidy. If you want to create a linear or radial gradient as background or border, check our [CSS Gradient Generator](#).



Hey! You found this booklet interesting? Support Converting Colors with the new Membership Option!

The pro membership hides all ads, plus gives you double the colors in the color bucket, and more awesome pro features!

**[Learn more, Memberships starting at \\$2.50/m!](#)**

**Follow me  
on Twitter!**

@ConvertingColor