

# Converting Colors

Hex(D780AE)

Have a look what the booklet for  
Hex(D780AE) contains.

<b>Hex(D780AE)</b> .....	3
<b><i>Conversions</i></b> .....	4
<b><i>Details</i></b> .....	6
<b><i>Harmonies</i></b> .....	11
<b><i>Previews</i></b> .....	23
<b><i>Color Blindness Simulation</i></b> .....	26
<b><i>CSS Examples</i></b> .....	29

# **Color**

**Hex(D780AE)**

# Conversions

## Conversions Part 1

Format	Color
Hex	D780AE
RGB	215, 128, 174
RGB Percent	84%, 50%, 68%
CMY	0.1569, 0.4980, 0.3176
CMYK	0.00, 0.40, 0.19, 0.16
HSL	328°, 52%, 67%
HSV	328°, 40%, 84%
XYZ	43.3835, 32.9414, 44.1162
YIQ	159.2570, 37.0860, 32.7500

# Conversions

## Conversions Part 2

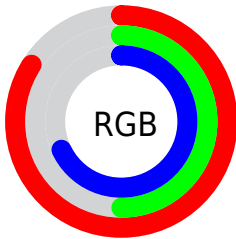
Format	Color
R <sub>Y</sub> B	215, 128, 174
Decimal	14123182
CIE Lab	64.11, 39.66, -9.87
CIE LCh	64, 40.867, 346.029
Yxy	32.9414, 0.3602, 0.2735
Android (android.graphics.Color)	4292313262 (0xFFD780AE)
YUV	159.2570, 7.2683, 48.8866
Hunter-Lab	57.3946, 34.4842, -5.3968

# Details

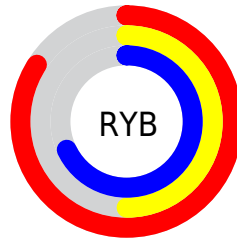
The Hex color **D780AE** is a light color, and the websafe version is hex **CC6699**. A complement of this color would be **80D7A9**, and the grayscale version is **9F9F9F**.

A 20% lighter version of the original color is **FFB6E5**, and **9E4C7A** is the 20% darker color. If you saturate the color by 10%, you get **D76BA4**, and if you desaturate by 10%, it is **D796B8**.

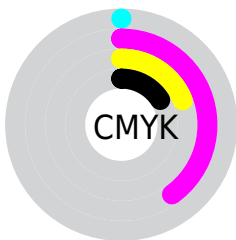
# Distribution



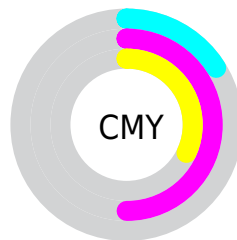
- Red (84%)
- Green (50%)
- Blue (68%)



- Red (84%)
- Yellow (50%)
- Blue (68%)



- Cyan (0%)
- Magenta (40%)
- Yellow (19%)
- Black (16%)



- Cyan (16%)
- Magenta (50%)
- Yellow (32%)

# Brightness & Saturation Gradients

These gradients show how the Hex color D780AE changes by changing the brightness by 10 percent. The first figure shows a shift by +10% for each color and the second figure -10%.

Similar to the brightness gradients but the following saturation gradients show a change of the Hex color D780AE by changing the saturation by 10% instead.



 D780AE

 D780AE

FFFFFF

 BA6693

 FFB6E5

 9E4C7A

 FFD2FF

 833361

 FFEFFF

 681949

 4E0032

 36001E

 1C0001

 000000

 D780AE

 D780AE

 D76BA4

 D796B8

 D7559A

 D7ABC2

 D73F90

 D7C1CC

 D72A85

 D7D6D7

 D7147B

 D7ECE1

 D70072

 D7FFEB

 D7FFF5

 D7FFFF

# Harmonies

## Analogous

The Analogous color harmony consists of three colors that are next to each other on the color wheel.



B88BCE



D780AE



E27E89

# Triad

The Triadic color harmony groups three colors that are evenly spaced from another and form a triangle on the color wheel.



D780AE



9F9F53



00ACCF

# Complementary

The Complementary color scheme is a pair of colors which are on the opposite of each other on the color wheel.



D780AE



80D7A9

# Split Complementary

Split-complementary colors differ from the complementary color scheme. The scheme consists of three colors, the original color and two neighbors of the complement color.



00AEAE



D780AE



76A867

# Square

The Square scheme is like the rectangle color scheme, but the four colors are evenly spaced on the color wheel.



D780AE



C19354



42AD89



3AA4E2

# Rectangle

The Rectangle color scheme consists of four colors that form a rectangle on the color wheel.



D780AE



DE8372



42AD89



00ADC5



# Sweetspot

The Sweet Spot groups the original color and five complimentary colors.



D780AE



FFE0F1



A980D7



806E77



000000



808080



# Same Dimension

The Same Dimension uses a secret algorithm to generate beautiful new colors.



D780AE



FF82C4



D78083



6B6066



AB005A



2B0017



# Inverse Universe

The Inverse Universe completely reimagines the original color for something new.



D780AE



FF82C4



80D7D4



6B6066



AB005A



2B0017



# Previews

## White Background



This preview shows how the Hex color D780AE looks on a white background.

## Color Contrast Check

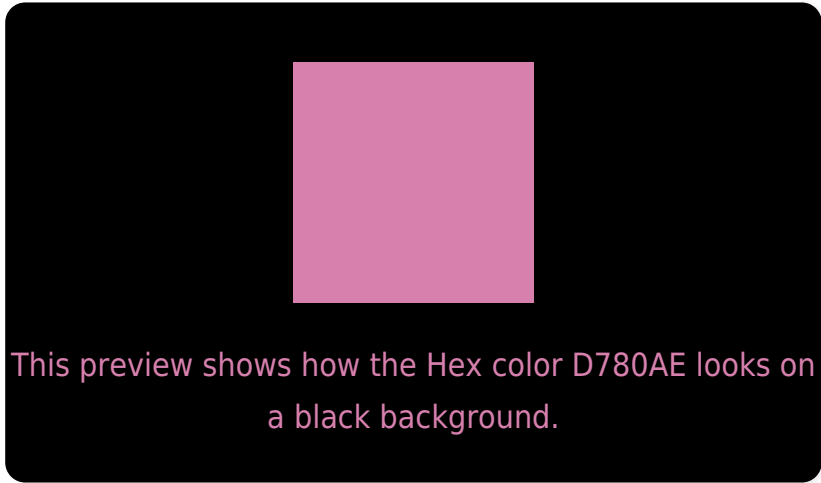
Large Text (above 18pt) WCAG AA × Fail

Any Text WCAG AA × Fail

Large Text (above 18pt) WCAG AAA × Fail

Any Text WCAG AAA × Fail

# Black Background



## Color Contrast Check

Large Text (above 18pt) WCAG AA ✓ Pass

Any Text WCAG AA ✓ Pass

Large Text (above 18pt) WCAG AAA ✓ Pass

Any Text WCAG AAA ✓ Pass

If you want to check with other color combinations, try the [Color Contrast Checker](#).



## Hex D780AE Background



This preview shows how black text looks on a background with the Hex color D780AE.

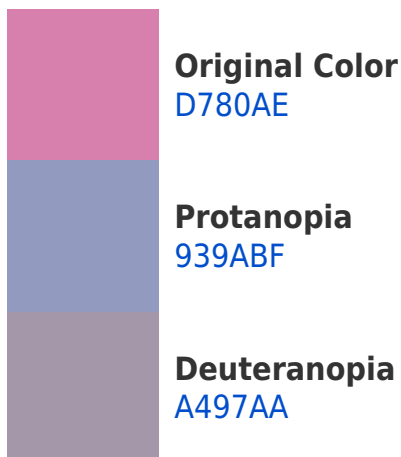



This preview shows how white text looks on a background with the Hex color D780AE.

# Color Blindness Simulation

Color vision deficiency is a very complex topic, and I could not describe the different causes any better than Wikipedia does, so if you want to learn more, you should check out their [article about color blindness](#).

## Dichromacy





**Tritanopia**  
D48690

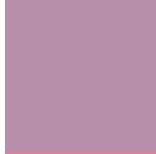
# Trichromacy



**Original Color**  
D780AE



**Protanomaly**  
AC91B9



**Deuteranomaly**  
B78FAB

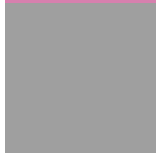


**Tritanomaly**  
D5849B

# Monochromacy



**Original Color**  
D780AE



**Achromatopsia**  
9F9F9F



**Achromatomaly**  
B394A4

# CSS Examples

## Text

The CSS property to change the color of the text to Hex D780AE is called "color". The color property can be set on classes, ids or directly on the HTML element.

This example shows how text in the color #D780AE looks like.

```
.text, #text, p{  
    color:#D780AE  
}
```

If you want to add a text shadow in that color use the text-shadow property, you can generate a text shadow directly with our [CSS Text Shadow Generator](#).

Here you see how black text with a 4 pixel #D780AE colored shadow looks like.

```
.shadow{ text-shadow: 4px 4px 2px #D780AE }  
}
```

## Border

The CSS property to change the border of an element to Hex D780AE is called "border". The border property can be set on classes, ids or directly on the HTML element.

This example shows the color as border, it can be applied via the CSS property "border" or "border-color".

```
.border, #border, table{ border:4px solid #D780AE }  
}
```

If only the border color should be changed use the property `border-color`.

```
.border{ border-color:#D780AE }
```

If you want to add a box shadow in that color use:

Here you see how a box with a 4 pixel #D780AE colored shadow looks like.

```
.boxshadow{ -moz-box-shadow:4px 4px 4px  
4px #D780AE; -webkit-box-shadow:4px 4px  
4px 4px #D780AE; box-shadow:4px 4px 4px  
4px #D780AE }
```

# Background

The CSS property to change the background color of an element to Hex D780AE is called "background". The background property can be set on classes, ids or directly on the HTML element.

```
.background, #background, body{  
background:#D780AE }
```

If only the background color should be changed can be used:

```
.background{ background-color:#D780AE }
```

This example shows the color as background, it is applied via the CSS property "background".

To optimize and compress your CSS code, you can use our [online CSS compressor and optimizer](#) based on csstidy. If you want to create a linear or radial gradient as background or border, check our [CSS Gradient Generator](#).



Hey! You found this booklet interesting? Support Converting Colors with the new Membership Option!

The pro membership hides all ads, plus gives you double the colors in the color bucket, and more awesome pro features!

**[Learn more, Memberships starting at \\$2.50/m!](#)**

**Follow me  
on Twitter!**

@ConvertingColor