

# Converting Colors

Hex(D7919C)

Have a look what the booklet for  
Hex(D7919C) contains.

<b>Hex(D7919C)</b> .....	3
<b><i>Conversions</i></b> .....	4
<b><i>Details</i></b> .....	6
<b><i>Harmonies</i></b> .....	11
<b><i>Previews</i></b> .....	23
<b><i>Color Blindness Simulation</i></b> .....	26
<b><i>CSS Examples</i></b> .....	29

**Color**

**Hex(D7919C)**

# Conversions

## Conversions Part 1

<b>Format</b>	<b>Color</b>
Hex	D7919C
RGB	215, 145, 156
RGB Percent	84%, 57%, 61%
CMY	0.1569, 0.4314, 0.3882
CMYK	0.00, 0.33, 0.27, 0.16
HSL	351°, 47%, 71%
HSV	351°, 33%, 84%
XYZ	44.1505, 37.0982, 36.2862
YIQ	167.1840, 38.1890, 18.2610

# Conversions

## Conversions Part 2

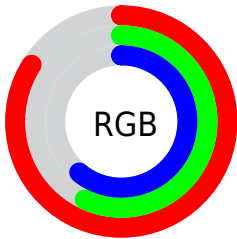
Format	Color
R <sub>Y</sub> B	215, 145, 156
Decimal	14127516
CIE Lab	67.35, 27.96, 5.05
CIE LCh	67, 28.412, 10.230
Yxy	37.0982, 0.3756, 0.3156
Android (android.graphics.Color)	4292317596 (0xFFD7919C)
YUV	167.1840, -5.5137, 41.9346
Hunter-Lab	60.9083, 22.7995, 7.3137

# Details

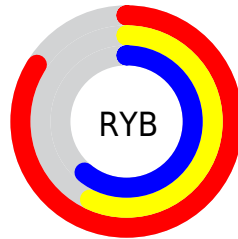
The Hex color **D7919C** is a light color, and the websafe version is hex **CC9999**. A complement of this color would be **91D7CC**, and the grayscale version is **A7A7A7**.

A 20% lighter version of the original color is **FFC7D2**, and **9F5E69** is the 20% darker color. If you saturate the color by 10%, you get **D77C8A**, and if you desaturate by 10%, it is **D7A7AE**.

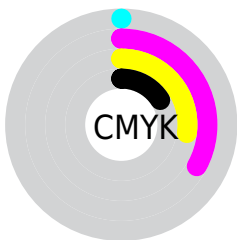
# Distribution



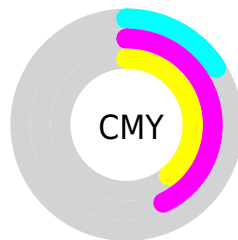
- Red (84%)
- Green (57%)
- Blue (61%)



- Red (84%)
- Yellow (57%)
- Blue (61%)



- Cyan (0%)
- Magenta (33%)
- Yellow (27%)
- Black (16%)



- Cyan (16%)
- Magenta (43%)
- Yellow (39%)

# Brightness & Saturation Gradients

These gradients show how the Hex color D7919C changes by changing the brightness by 10 percent. The first figure shows a shift by +10% for each color and the second figure -10%.

Similar to the brightness gradients but the following saturation gradients show a change of the Hex color D7919C by changing the saturation by 10% instead.



 D7919C

 D7919C

FFFFFF

 BB7782

 FFC7D2

 9F5E69

 FFE4EF

 834551

 692E3A

 4F1624

 36000F

 1E0001

 000000

 D7919C

 D7919C

 D77C8A

 D7A7AE

 D76678

 D7BCC0

 D75166

 D7D2D2

 D73B54

 D7E7E4

 D72541

 D7FCF7

 D7102F

 D7FFFF

 D70022

# Harmonies

## Analogous

The Analogous color harmony consists of three colors that are next to each other on the color wheel.



CC93B6



D7919C



D49584

# Triad

The Triadic color harmony groups three colors that are evenly spaced from another and form a triangle on the color wheel.



D7919C



91AC7C



6BABD3

# Complementary

The Complementary color scheme is a pair of colors which are on the opposite of each other on the color wheel.



D7919C



91D7CC

# Split Complementary

Split-complementary colors differ from the complementary color scheme. The scheme consists of three colors, the original color and two neighbors of the complement color.



54B0C4



D7919C



73B192

# Square

The Square scheme is like the rectangle color scheme, but the four colors are evenly spaced on the color wheel.



D7919C



ADA571



5AB2AC



90A3D6

# Rectangle

The Rectangle color scheme consists of four colors that form a rectangle on the color wheel.



D7919C



CB9A78



5AB2AC



61ADD0



# Sweetspot

The Sweet Spot groups the original color and five complimentary colors.



D7919C



FFE6EA



CB91D7



807073



000000



808080



# Same Dimension

The Same Dimension uses a secret algorithm to generate beautiful new colors.



D7919C



FF9CAB



D7A891



6B6062



AB001B



2B0007



# Inverse Universe

The Inverse Universe completely reimagines the original color for something new.



D7919C



FF9CAB



91C0D7



6B6062



AB001B

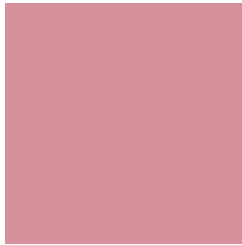


2B0007



# Previews

## White Background



This preview shows how the Hex color D7919C looks on a white background.

## Color Contrast Check

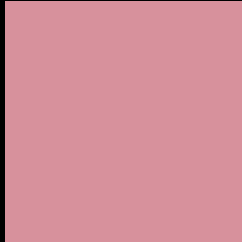
Large Text (above 18pt) WCAG AA × Fail

Any Text WCAG AA × Fail

Large Text (above 18pt) WCAG AAA × Fail

Any Text WCAG AAA × Fail

# Black Background



This preview shows how the Hex color D7919C looks on a black background.

## Color Contrast Check

Large Text (above 18pt) WCAG AA ✓ Pass

Any Text WCAG AA ✓ Pass

Large Text (above 18pt) WCAG AAA ✓ Pass

Any Text WCAG AAA ✓ Pass

If you want to check with other color combinations, try the [Color Contrast Checker](#).



## Hex D7919C Background



This preview shows how black text looks on a background with the Hex color D7919C.



This preview shows how white text looks on a background with the Hex color D7919C.

# Color Blindness Simulation

Color vision deficiency is a very complex topic, and I could not describe the different causes any better than Wikipedia does, so if you want to learn more, you should check out their [article about color blindness](#).


## Dichromacy



**Original Color**  
D7919C

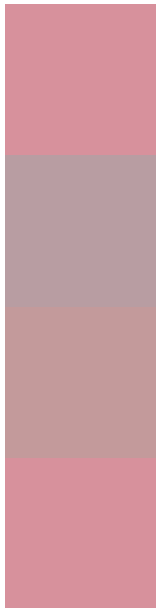
**Protanopia**  
A7A4A6

**Deuteranopia**  
B89F9A



**Tritanopia**  
D7919C

# Trichromacy



**Original Color**  
D7919C

**Protanomaly**  
B89DA2

**Deuteranomaly**  
C39A9B

**Tritanomaly**  
D7919C

# Monochromacy



**Original Color**  
D7919C

**Achromatopsia**  
A7A7A7

**Achromatomaly**  
B89FA3

# CSS Examples

## Text

The CSS property to change the color of the text to Hex D7919C is called "color". The color property can be set on classes, ids or directly on the HTML element.

This example shows how text in the color #D7919C looks like.

```
.text, #text, p{  
    color:#D7919C  
}
```

If you want to add a text shadow in that color use the text-shadow property, you can generate a text shadow directly with our [CSS Text Shadow Generator](#).

Here you see how black text with a 4 pixel #D7919C colored shadow looks like.

```
.shadow{ text-shadow: 4px 4px 2px #D7919C
}
```

## Border

The CSS property to change the border of an element to Hex D7919C is called "border". The border property can be set on classes, ids or directly on the HTML element.

This example shows the color as border, it can be applied via the CSS property "border" or "border-color".

```
.border, #border, table{ border:4px solid
#D7919C }
```

If only the border color should be changed use the property `border-color`.

```
.border{ border-color:#D7919C }
```

If you want to add a box shadow in that color use:

Here you see how a box with a 4 pixel #D7919C colored shadow looks like.

```
.boxshadow{ -moz-box-shadow:4px 4px 4px  
4px #D7919C; -webkit-box-shadow:4px 4px  
4px 4px #D7919C; box-shadow:4px 4px 4px  
4px #D7919C }
```

# Background

The CSS property to change the background color of an element to Hex D7919C is called "background". The background property can be set on classes, ids or directly on the HTML element.

```
.background, #background, body{  
background:#D7919C }
```

If only the background color should be changed can be used:

```
.background{ background-color:#D7919C }
```

This example shows the color as background, it is applied via the CSS property "background".

To optimize and compress your CSS code, you can use our [online CSS compressor and optimizer](#) based on csstidy. If you want to create a linear or radial gradient as background or border, check our [CSS Gradient Generator](#).



Hey! You found this booklet interesting? Support Converting Colors with the new Membership Option!

The pro membership hides all ads, plus gives you double the colors in the color bucket, and more awesome pro features!

**[Learn more, Memberships starting at \\$2.50/m!](#)**

**Follow me  
on Twitter!**

@ConvertingColor