

Converting Colors

Hex(D79387)

Have a look what the booklet for
Hex(D79387) contains.

Hex(D79387)	3
<i>Conversions</i>	4
<i>Details</i>	6
<i>Harmonies</i>	11
<i>Previews</i>	23
<i>Color Blindness Simulation</i>	26
<i>CSS Examples</i>	29

Color

Hex(D79387)

Conversions

Conversions Part 1

Format	Color
Hex	D79387
RGB	215, 147, 135
RGB Percent	84%, 58%, 53%
CMY	0.1569, 0.4235, 0.4706
CMYK	0.00, 0.32, 0.37, 0.16
HSL	9°, 50%, 69%
HSV	9°, 37%, 84%
XYZ	42.8312, 37.0638, 27.8182
YIQ	165.9640, 44.3800, 10.6840

Conversions

Conversions Part 2

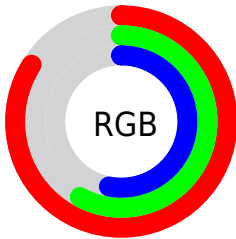
Format	Color
R _Y B	215, 149, 135
Decimal	14128007
CIE Lab	67.32, 24.18, 16.76
CIE LCh	67, 29.414, 34.727
Yxy	37.0638, 0.3976, 0.3441
Android (android.graphics.Color)	4292318087 (0xFFD79387)
YUV	165.9640, -15.2653, 43.0046
Hunter-Lab	60.8800, 19.0409, 15.5243

Details

The Hex color **D79387** is a light color, and the websafe version is hex **CC9999**. A complement of this color would be **87CBD7**, and the grayscale version is **A6A6A6**.

A 20% lighter version of the original color is **FFC9BC**, and **9E6055** is the 20% darker color. If you saturate the color by 10%, you get **D78171**, and if you desaturate by 10%, it is **D7A59D**.

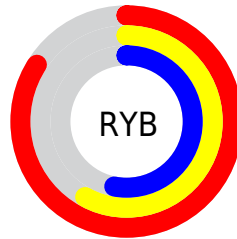
Distribution



Red (84%)

Green (58%)

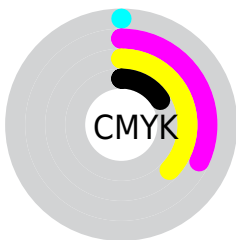
Blue (53%)



Red (84%)

Yellow (58%)

Blue (53%)

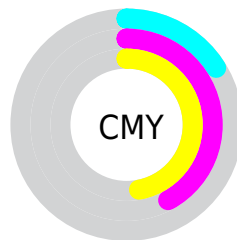


Cyan (0%)

Magenta (32%)

Yellow (37%)

Black (16%)



Cyan (16%)

Magenta (42%)

Yellow (47%)

Brightness & Saturation Gradients

These gradients show how the Hex color D79387 changes by changing the brightness by 10 percent. The first figure shows a shift by +10% for each color and the second figure -10%.

Similar to the brightness gradients but the following saturation gradients show a change of the Hex color D79387 by changing the saturation by 10% instead.

 D79387

 D79387

FFFFFF

 BA796E

 FFC9BC

 9E6055

 FFE6D8

 83473E

 FFFFF4

 683028

 4E1A14

 350300

 190001

 000000

 D79387

 D79387

 D78171

 D7A59D

 D76E5C

 D7B8B2

 D75C46

 D7CAC8

 D74A31

 D7DCDD

 D7381B

 D7EEF3

 D72506

 D7FFFF

 D72000

Harmonies

Analogous

The Analogous color harmony consists of three colors that are next to each other on the color wheel.



D890A1



D79387



C99B75

Triad

The Triadic color harmony groups three colors that are evenly spaced from another and form a triangle on the color wheel.



D79387



77B18C



87A5D8

Complementary

The Complementary color scheme is a pair of colors which are on the opposite of each other on the color wheel.



D79387



87CBD7

Split Complementary

Split-complementary colors differ from the complementary color scheme. The scheme consists of three colors, the original color and two neighbors of the complement color.



62ADD3



D79387



5AB3A7

Square

The Square scheme is like the rectangle color scheme, but the four colors are evenly spaced on the color wheel.



D79387



96AB78



4EB1C1



AD9CCF

Rectangle

The Rectangle color scheme consists of four colors that form a rectangle on the color wheel.



D79387



BBA16F



4EB1C1



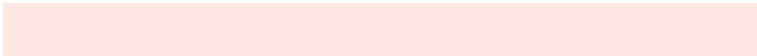
7AA8D8

Sweetspot

The Sweet Spot groups the original color and five complimentary colors.



D79387



FFE7E3



D787CB



80716F



000000



808080

Same Dimension

The Same Dimension uses a secret algorithm to generate beautiful new colors.



D79387



FF9D8C



D7BA87



6B6260



AB1A00



2B0700

Inverse Universe

The Inverse Universe completely reimagines the original color for something new.



87CBD7



8CEEFF



87A3D7



60696B



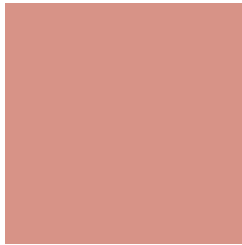
0091AB



00252B

Previews

White Background



This preview shows how the Hex color D79387 looks on a white background.

Color Contrast Check

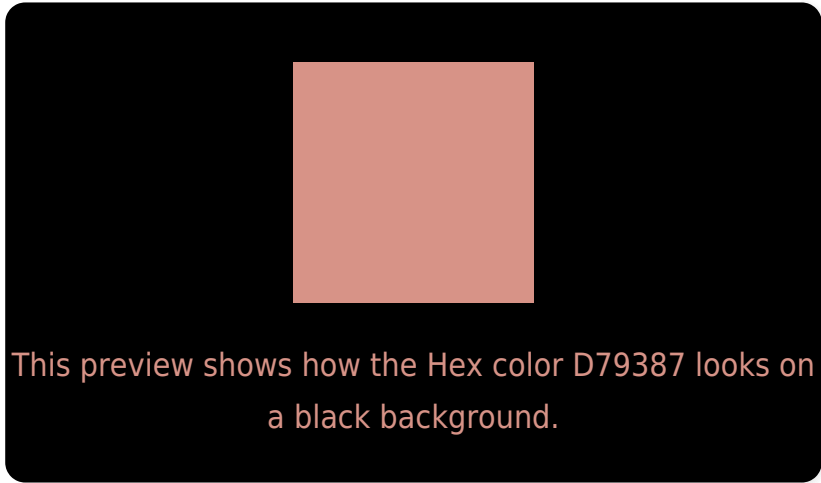
Large Text (above 18pt) WCAG AA × Fail

Any Text WCAG AA × Fail

Large Text (above 18pt) WCAG AAA × Fail

Any Text WCAG AAA × Fail

Black Background



Color Contrast Check

Large Text (above 18pt) WCAG AA ✓ Pass

Any Text WCAG AA ✓ Pass

Large Text (above 18pt) WCAG AAA ✓ Pass

Any Text WCAG AAA ✓ Pass

If you want to check with other color combinations, try the [Color Contrast Checker](#).

Hex D79387 Background



This preview shows how black text looks on a background with the Hex color D79387.

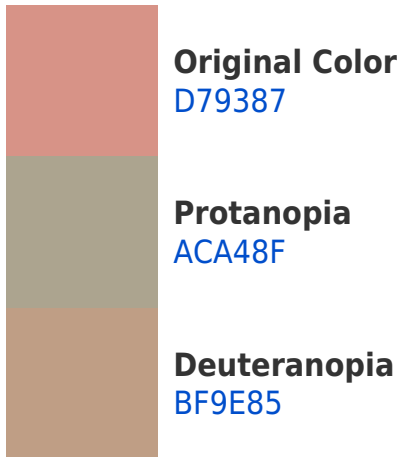


This preview shows how white text looks on a background with the Hex color D79387.

Color Blindness Simulation

Color vision deficiency is a very complex topic, and I could not describe the different causes any better than Wikipedia does, so if you want to learn more, you should check out their [article about color blindness](#).

Dichromacy





Tritanopia
D9909B

Trichromacy



Original Color
D79387

Protanomaly
BC9E8C

Deuteranomaly
C89A86

Tritanomaly
D89194

Monochromacy



Original Color
D79387

Achromatopsia
A6A6A6

Achromatomaly
B89F9B

CSS Examples

Text

The CSS property to change the color of the text to Hex D79387 is called "color". The color property can be set on classes, ids or directly on the HTML element.

This example shows how text in the color #D79387 looks like.

```
.text, #text, p{  
    color:#D79387  
}
```

If you want to add a text shadow in that color use the text-shadow property, you can generate a text shadow directly with our [CSS Text Shadow Generator](#).

Here you see how black text with a 4 pixel #D79387 colored shadow looks like.

```
.shadow{ text-shadow: 4px 4px 2px #D79387
}
```

Border

The CSS property to change the border of an element to Hex D79387 is called "border". The border property can be set on classes, ids or directly on the HTML element.

This example shows the color as border, it can be applied via the CSS property "border" or "border-color".

```
.border, #border, table{ border:4px solid
#D79387 }
```

If only the border color should be changed use the property `border-color`.

```
.border{ border-color:#D79387 }
```

If you want to add a box shadow in that color use:

Here you see how a box with a 4 pixel #D79387 colored shadow looks like.

```
.boxshadow{ -moz-box-shadow:4px 4px 4px  
4px #D79387; -webkit-box-shadow:4px 4px  
4px 4px #D79387; box-shadow:4px 4px 4px  
4px #D79387 }
```

Background

The CSS property to change the background color of an element to Hex D79387 is called "background". The background property can be set on classes, ids or directly on the HTML element.

```
.background, #background, body{  
background:#D79387 }
```

If only the background color should be changed can be used:

```
.background{ background-color:#D79387 }
```

This example shows the color as background, it is applied via the CSS property "background".

To optimize and compress your CSS code, you can use our [online CSS compressor and optimizer](#) based on csstidy. If you want to create a linear or radial gradient as background or border, check our [CSS Gradient Generator](#).

Hey! You found this booklet interesting? Support Converting Colors with the new Membership Option!

The pro membership hides all ads, plus gives you double the colors in the color bucket, and more awesome pro features!

[Learn more, Memberships starting at \\$2.50/m!](#)

**Follow me
on Twitter!**

@ConvertingColor