

Converting Colors

Hex(D795A7)

Have a look what the booklet for
Hex(D795A7) contains.

Hex(D795A7)	3
<i>Conversions</i>	4
<i>Details</i>	6
<i>Harmonies</i>	11
<i>Previews</i>	23
<i>Color Blindness Simulation</i>	26
<i>CSS Examples</i>	29

Color

Hex(D795A7)

Conversions

Conversions Part 1

Format	Color
Hex	D795A7
RGB	215, 149, 167
RGB Percent	84%, 58%, 65%
CMY	0.1569, 0.4157, 0.3451
CMYK	0.00, 0.31, 0.22, 0.16
HSL	344°, 45%, 71%
HSV	344°, 31%, 84%
XYZ	45.7468, 38.7320, 41.6241
YIQ	170.7860, 33.5580, 19.5900

Conversions

Conversions Part 2

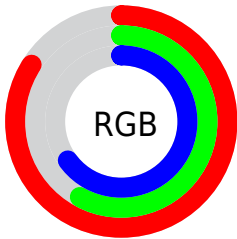
Format	Color
R _Y B	215, 149, 167
Decimal	14128551
CIE Lab	68.56, 27.37, 0.63
CIE LCh	69, 27.381, 1.328
Yxy	38.7320, 0.3628, 0.3071
Android (android.graphics.Color)	4292318631 (0xFFD795A7)
YUV	170.7860, -1.8665, 38.7757
Hunter-Lab	62.2350, 22.2979, 3.9101

Details

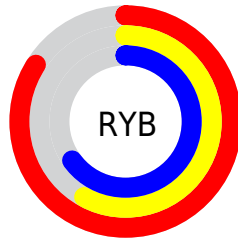
The Hex color **D795A7** is a light color, and the websafe version is hex **CC9999**. A complement of this color would be **95D7C5**, and the grayscale version is **ABABAB**.

A 20% lighter version of the original color is **FFCCDE**, and **9F6173** is the 20% darker color. If you saturate the color by 10%, you get **D77F97**, and if you desaturate by 10%, it is **D7ABB7**.

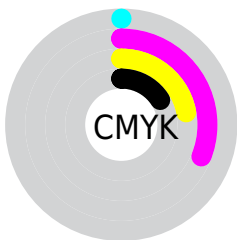
Distribution



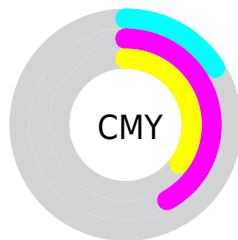
- Red (84%)
- Green (58%)
- Blue (65%)



- Red (84%)
- Yellow (58%)
- Blue (65%)



- Cyan (0%)
- Magenta (31%)
- Yellow (22%)
- Black (16%)



- Cyan (16%)
- Magenta (42%)
- Yellow (35%)

Brightness & Saturation Gradients

These gradients show how the Hex color D795A7 changes by changing the brightness by 10 percent. The first figure shows a shift by +10% for each color and the second figure -10%.

Similar to the brightness gradients but the following saturation gradients show a change of the Hex color D795A7 by changing the saturation by 10% instead.

 D795A7

 D795A7

FFFFFF

 BB7B8D

 FFCCDE

 9F6173

 FFE8FB

 84495B

 6A3143

 501A2D

 370319

 230001

 000000

 D795A7

 D795A7

 D77F97

 D7ABB7

 D76A88

 D7C0C6

 D75578

 D7D6D6

 D73F68

 D7EBE6

 D72A59

 D7FFF5

 D71449

 D7FFFF

 D7003B

Harmonies

Analogous

The Analogous color harmony consists of three colors that are next to each other on the color wheel.



C899BF



D795A7



D8978F

Triad

The Triadic color harmony groups three colors that are evenly spaced from another and form a triangle on the color wheel.



D795A7



9DAD7C



69B0D2

Complementary

The Complementary color scheme is a pair of colors which are on the opposite of each other on the color wheel.



D795A7



95D7C5

Split Complementary

Split-complementary colors differ from the complementary color scheme. The scheme consists of three colors, the original color and two neighbors of the complement color.



5BB4C0



D795A7



81B38F

Square

The Square scheme is like the rectangle color scheme, but the four colors are evenly spaced on the color wheel.



D795A7



B8A676



67B5A7



89A9D8

Rectangle

The Rectangle color scheme consists of four colors that form a rectangle on the color wheel.



D795A7



D29B82



67B5A7



61B2CD

Sweetspot

The Sweet Spot groups the original color and five complimentary colors.



D795A7



FFE8EE



C495D7



807175



000000



808080

Same Dimension

The Same Dimension uses a secret algorithm to generate beautiful new colors.



D795A7



FFA1BA



D7A395



6B6063



AB002F



2B000C

Inverse Universe

The Inverse Universe completely reimagines the original color for something new.



D795A7



FFA1BA



95C9D7



6B6063



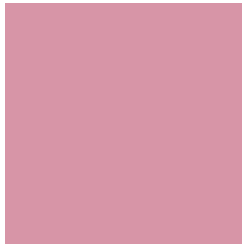
AB002F



2B000C

Previews

White Background



This preview shows how the Hex color D795A7 looks on a white background.

Color Contrast Check

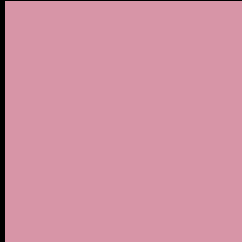
Large Text (above 18pt) WCAG AA × Fail

Any Text WCAG AA × Fail

Large Text (above 18pt) WCAG AAA × Fail

Any Text WCAG AAA × Fail

Black Background



This preview shows how the Hex color D795A7 looks on a black background.

Color Contrast Check

Large Text (above 18pt) WCAG AA ✓ Pass

Any Text WCAG AA ✓ Pass

Large Text (above 18pt) WCAG AAA ✓ Pass

Any Text WCAG AAA ✓ Pass

If you want to check with other color combinations, try the [Color Contrast Checker](#).

Hex D795A7 Background



This preview shows how black text looks on a background with the Hex color D795A7.

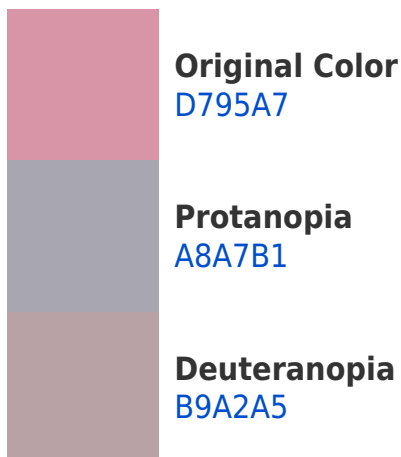



This preview shows how white text looks on a background with the Hex color D795A7.

Color Blindness Simulation

Color vision deficiency is a very complex topic, and I could not describe the different causes any better than Wikipedia does, so if you want to learn more, you should check out their [article about color blindness](#).

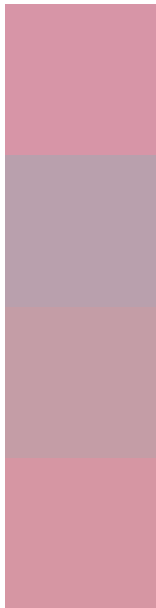
Dichromacy





Tritanopia
D696A1

Trichromacy



Original Color
D795A7

Protanomaly
B9A0AD

Deuteranomaly
C49DA6

Tritanomaly
D696A3

Monochromacy



Original Color
D795A7

Achromatopsia
ABABAB

Achromatomaly
BBA3AA

CSS Examples

Text

The CSS property to change the color of the text to Hex D795A7 is called "color". The color property can be set on classes, ids or directly on the HTML element.

This example shows how text in the color #D795A7 looks like.

```
.text, #text, p{  
    color:#D795A7  
}
```

If you want to add a text shadow in that color use the text-shadow property, you can generate a text shadow directly with our [CSS Text Shadow Generator](#).

Here you see how black text with a 4 pixel #D795A7 colored shadow looks like.

```
.shadow{ text-shadow: 4px 4px 2px #D795A7
}
```

Border

The CSS property to change the border of an element to Hex D795A7 is called "border". The border property can be set on classes, ids or directly on the HTML element.

This example shows the color as border, it can be applied via the CSS property "border" or "border-color".

```
.border, #border, table{ border:4px solid
#D795A7 }
```

If only the border color should be changed use the property `border-color`.

```
.border{ border-color:#D795A7 }
```

If you want to add a box shadow in that color use:

Here you see how a box with a 4 pixel #D795A7 colored shadow looks like.

```
.boxshadow{ -moz-box-shadow:4px 4px 4px  
4px #D795A7; -webkit-box-shadow:4px 4px  
4px 4px #D795A7; box-shadow:4px 4px 4px  
4px #D795A7 }
```

Background

The CSS property to change the background color of an element to Hex D795A7 is called "background". The background property can be set on classes, ids or directly on the HTML element.

```
.background, #background, body{  
background:#D795A7 }
```

If only the background color should be changed can be used:

```
.background{ background-color:#D795A7 }
```

This example shows the color as background, it is applied via the CSS property "background".

To optimize and compress your CSS code, you can use our [online CSS compressor and optimizer](#) based on csstidy. If you want to create a linear or radial gradient as background or border, check our [CSS Gradient Generator](#).

Hey! You found this booklet interesting? Support Converting Colors with the new Membership Option!

The pro membership hides all ads, plus gives you double the colors in the color bucket, and more awesome pro features!

[Learn more, Memberships starting at \\$2.50/m!](#)

**Follow me
on Twitter!**

@ConvertingColor