

# Converting Colors

Hex(D7A197)

Have a look what the booklet for  
Hex(D7A197) contains.

|  |    |
|--|----|
| <b>Hex(D7A197)</b> .....                       | 3  |
| <b><i>Conversions</i></b> .....                | 4  |
| <b><i>Details</i></b> .....                    | 6  |
| <b><i>Harmonies</i></b> .....                  | 11 |
| <b><i>Previews</i></b> .....                   | 23 |
| <b><i>Color Blindness Simulation</i></b> ..... | 26 |
| <b><i>CSS Examples</i></b> .....               | 29 |

# **Color**

**Hex(D7A197)**

# Conversions

## Conversions Part 1

| Format      | Color                     |
|-------------|---------------------------|
| Hex         | D7A197                    |
| RGB         | 215, 161, 151             |
| RGB Percent | 84%, 63%, 59%             |
| CMY         | 0.1569, 0.3686, 0.4078    |
| CMYK        | 0.00, 0.25, 0.30, 0.16    |
| HSL         | 9°, 44%, 72%              |
| HSV         | 9°, 30%, 84%              |
| XYZ         | 46.3551, 42.1712, 34.9748 |
| YIQ         | 176.0060, 35.3940, 8.3380 |

# Conversions

## Conversions Part 2

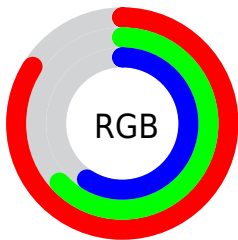
| <b>Format</b>                       | <b>Color</b>                   |
|-------------------------------------|--------------------------------|
| <b>R<sub>YB</sub></b>               | 215, 163, 151                  |
| Decimal                             | 14131607                       |
| CIE Lab                             | 70.99, 18.62, 13.01            |
| CIE LCh                             | 71, 22.714, 34.943             |
| Yxy                                 | 42.1712, 0.3753,<br>0.3415     |
| Android<br>(android.graphics.Color) | 4292321687<br>(0xFFD7A197)     |
| YUV                                 | 176.0060, -12.3280,<br>34.1977 |
| Hunter-Lab                          | 64.9393, 13.7733,<br>13.5253   |

# Details

The Hex color **D7A197** is a light color, and the websafe version is hex **CC9999**. A complement of this color would be **97CDD7**, and the grayscale version is **B0B0B0**.

A 20% lighter version of the original color is **FFD8CD**, and **9F6D64** is the 20% darker color. If you saturate the color by 10%, you get **D78F82**, and if you desaturate by 10%, it is **D7B3AD**.

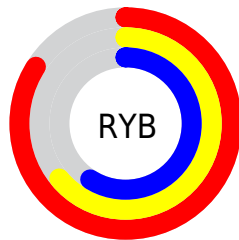
# Distribution



Red (84%)

Green (63%)

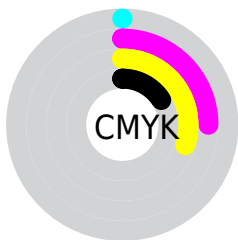
Blue (59%)



Red (84%)

Yellow (64%)

Blue (59%)

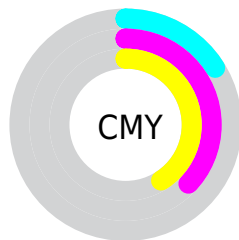


Cyan (0%)

Magenta (25%)

Yellow (30%)

Black (16%)



Cyan (16%)

Magenta (37%)

Yellow (41%)

# Brightness & Saturation Gradients

These gradients show how the Hex color D7A197 changes by changing the brightness by 10 percent. The first figure shows a shift by +10% for each color and the second figure -10%.

Similar to the brightness gradients but the following saturation gradients show a change of the Hex color D7A197 by changing the saturation by 10% instead.



 D7A197

 D7A197

FFFFFF

 BB877D

 FFD8CD

 9F6D64

 FFF5E9

 84554C

 6A3D36

 502720

 381109

 230000

 000000

 D7A197

 D7A197

 D78F82

 D7B3AD

 D77D6C

 D7C5C2

 D76B57

 D7D7D8

 D75841

 D7EAED

 D7462C

 D7FCFF

 D73416

 D7FFFF

 D72201

 D72200

# Harmonies

## Analogous

The Analogous color harmony consists of three colors that are next to each other on the color wheel.



D79FAB



D7A197



CCA789

# Triad

The Triadic color harmony groups three colors that are evenly spaced from another and form a triangle on the color wheel.



D7A197



8CB89C



9AAED7

# Complementary

The Complementary color scheme is a pair of colors which are on the opposite of each other on the color wheel.



D7A197



97CDD7

# Split Complementary

Split-complementary colors differ from the complementary color scheme. The scheme consists of three colors, the original color and two neighbors of the complement color.



80B5D3



D7A197



79BAB1

# Square

The Square scheme is like the rectangle color scheme, but the four colors are evenly spaced on the color wheel.



D7A197



A3B48B



73B8C5



B6A7D0

# Rectangle

The Rectangle color scheme consists of four colors that form a rectangle on the color wheel.



D7A197



C1AB85



73B8C5



90B1D6

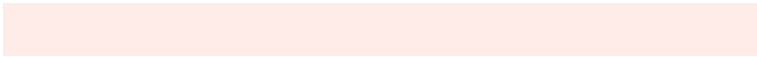


# Sweetspot

The Sweet Spot groups the original color and five complimentary colors.



D7A197



FFECE8



D797CD



807471



000000



808080



# Same Dimension

The Same Dimension uses a secret algorithm to generate beautiful new colors.



D7A197



FFB2A3



D7C197



6B6260



AB1B00



2B0700

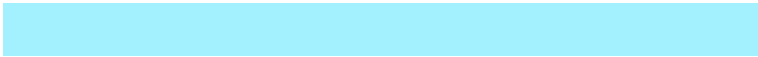


# Inverse Universe

The Inverse Universe completely reimagines the original color for something new.



97CDD7



A3F1FF



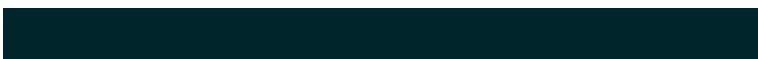
97ADD7



60696B



0090AB

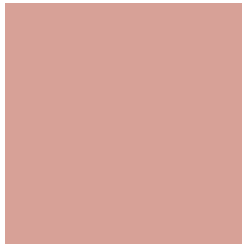


00252B



# Previews

## White Background



This preview shows how the Hex color D7A197 looks on a white background.

## Color Contrast Check

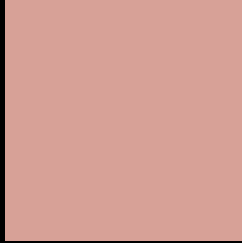
Large Text (above 18pt) WCAG AA × Fail

Any Text WCAG AA × Fail

Large Text (above 18pt) WCAG AAA × Fail

Any Text WCAG AAA × Fail

# Black Background



This preview shows how the Hex color D7A197 looks on a black background.

## Color Contrast Check

Large Text (above 18pt) WCAG AA ✓ Pass

Any Text WCAG AA ✓ Pass

Large Text (above 18pt) WCAG AAA ✓ Pass

Any Text WCAG AAA ✓ Pass

If you want to check with other color combinations, try the [Color Contrast Checker](#).



## Hex D7A197 Background



This preview shows how black text looks on a background with the Hex color D7A197.

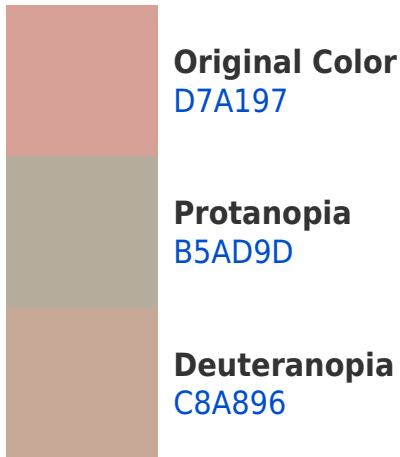


This preview shows how white text looks on a background with the Hex color D7A197.

# Color Blindness Simulation

Color vision deficiency is a very complex topic, and I could not describe the different causes any better than Wikipedia does, so if you want to learn more, you should check out their [article about color blindness](#).

## Dichromacy





**Tritanopia**  
D99EAA

# Trichromacy



**Original Color**  
D7A197

**Protanomaly**  
C1A99B

**Deuteranomaly**  
CDA596

**Tritanomaly**  
D89FA3

# Monochromacy



**Original Color**  
D7A197

**Achromatopsia**  
B0B0B0

**Achromatomaly**  
BEABA7

# CSS Examples

## Text

The CSS property to change the color of the text to Hex D7A197 is called "color". The color property can be set on classes, ids or directly on the HTML element.

This example shows how text in the color #D7A197 looks like.

```
.text, #text, p{  
    color:#D7A197  
}
```

If you want to add a text shadow in that color use the text-shadow property, you can generate a text shadow directly with our [CSS Text Shadow Generator](#).

Here you see how black text with a 4 pixel #D7A197 colored shadow looks like.

```
.shadow{ text-shadow: 4px 4px 2px #D7A197
}
```

## Border

The CSS property to change the border of an element to Hex D7A197 is called "border". The border property can be set on classes, ids or directly on the HTML element.

This example shows the color as border, it can be applied via the CSS property "border" or "border-color".

```
.border, #border, table{ border:4px solid
#D7A197 }
```

If only the border color should be changed use the property `border-color`.

```
.border{ border-color:#D7A197 }
```

If you want to add a box shadow in that color use:

Here you see how a box with a 4 pixel #D7A197 colored shadow looks like.

```
.boxshadow{ -moz-box-shadow:4px 4px 4px  
4px #D7A197; -webkit-box-shadow:4px 4px  
4px 4px #D7A197; box-shadow:4px 4px 4px  
4px #D7A197 }
```

# Background

The CSS property to change the background color of an element to Hex D7A197 is called "background". The background property can be set on classes, ids or directly on the HTML element.

```
.background, #background, body{  
background:#D7A197 }
```

If only the background color should be changed can be used:

```
.background{ background-color:#D7A197 }
```

This example shows the color as background, it is applied via the CSS property "background".

To optimize and compress your CSS code, you can use our [online CSS compressor and optimizer](#) based on csstidy. If you want to create a linear or radial gradient as background or border, check our [CSS Gradient Generator](#).



Hey! You found this booklet interesting? Support Converting Colors with the new Membership Option!

The pro membership hides all ads, plus gives you double the colors in the color bucket, and more awesome pro features!

**[Learn more, Memberships starting at \\$2.50/m!](#)**

**Follow me  
on Twitter!**

@ConvertingColor