

Converting Colors

Hex(D7A4B1)

Have a look what the booklet for
Hex(D7A4B1) contains.

Hex(D7A4B1)	3
<i>Conversions</i>	4
<i>Details</i>	6
<i>Harmonies</i>	11
<i>Previews</i>	23
<i>Color Blindness Simulation</i>	26
<i>CSS Examples</i>	29

Color

Hex(D7A4B1)

Conversions

Conversions Part 1

Format	Color
Hex	D7A4B1
RGB	215, 164, 177
RGB Percent	84%, 64%, 69%
CMY	0.1569, 0.3569, 0.3059
CMYK	0.00, 0.24, 0.18, 0.16
HSL	345°, 39%, 74%
HSV	345°, 24%, 84%
XYZ	49.2356, 44.1723, 47.5261
YIQ	180.7310, 26.2230, 14.8550

Conversions

Conversions Part 2

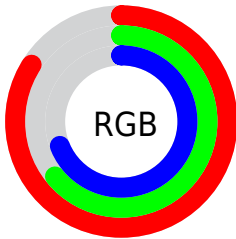
Format	Color
R _Y B	215, 164, 177
Decimal	14132401
CIE Lab	72.34, 20.77, 0.60
CIE LCh	72, 20.778, 1.666
Yxy	44.1723, 0.3494, 0.3134
Android (android.graphics.Color)	4292322481 (0xFFD7A4B1)
YUV	180.7310, -1.8394, 30.0539
Hunter-Lab	66.4623, 15.9248, 4.1263

Details

The Hex color **D7A4B1** is a light color, and the websafe version is hex **CC9999**. A complement of this color would be **A4D7CA**, and the grayscale version is **B5B5B5**.

A 20% lighter version of the original color is **FFDBE9**, and **9F707D** is the 20% darker color. If you saturate the color by 10%, you get **D78FA1**, and if you desaturate by 10%, it is **D7BAC1**.

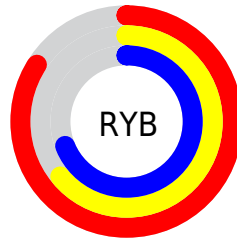
Distribution



Red (84%)

Green (64%)

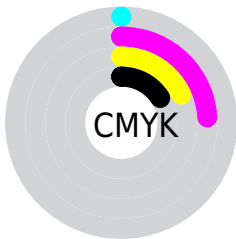
Blue (69%)



Red (84%)

Yellow (64%)

Blue (69%)

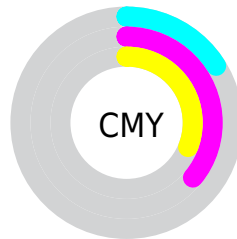


Cyan (0%)

Magenta (24%)

Yellow (18%)

Black (16%)



Cyan (16%)

Magenta (36%)

Yellow (31%)

Brightness & Saturation Gradients

These gradients show how the Hex color D7A4B1 changes by changing the brightness by 10 percent. The first figure shows a shift by +10% for each color and the second figure -10%.

Similar to the brightness gradients but the following saturation gradients show a change of the Hex color D7A4B1 by changing the saturation by 10% instead.

 D7A4B1

 D7A4B1

FFFFFF

 BB8A96

 FFDBE9

 9F707D

 FFF8FF

 855764

 6B3F4C

 522935

 3A1320

 260008

 000000

 D7A4B1

 D7A4B1

 D78FA1

 D7BAC1

 D77991

 D7CFD1

 D76481

 D7E5E1

 D74E71

 D7FAF1

 D73961

 D7FFFF

 D72351

 D70E41

 D70037

Harmonies

Analogous

The Analogous color harmony consists of three colors that are next to each other on the color wheel.



CBA7C4



D7A4B1



D8A59E

Triad

The Triadic color harmony groups three colors that are evenly spaced from another and form a triangle on the color wheel.



D7A4B1



AAB691



87B8D2

Complementary

The Complementary color scheme is a pair of colors which are on the opposite of each other on the color wheel.



D7A4B1



A4D7CA

Split Complementary

Split-complementary colors differ from the complementary color scheme. The scheme consists of three colors, the original color and two neighbors of the complement color.



7DBCC5



D7A4B1



95BA9F

Square

The Square scheme is like the rectangle color scheme, but the four colors are evenly spaced on the color wheel.



D7A4B1



BFB08C



83BCB2



9DB3D7

Rectangle

The Rectangle color scheme consists of four colors that form a rectangle on the color wheel.



D7A4B1



D3A894



83BCB2



82BACF

Sweetspot

The Sweet Spot groups the original color and five complimentary colors.



D7A4B1



FFEDF2



C9A4D7



807578



000000



808080

Same Dimension

The Same Dimension uses a secret algorithm to generate beautiful new colors.



D7A4B1



FFB8CA



D7B0A4



6B6063



AB002C



2B000B

Inverse Universe

The Inverse Universe completely reimagines the original color for something new.



D7A4B1



FFB8CA



A4CBD7



6B6063



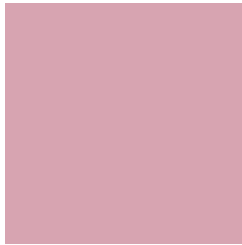
AB002C



2B000B

Previews

White Background



This preview shows how the Hex color D7A4B1 looks on a white background.

Color Contrast Check

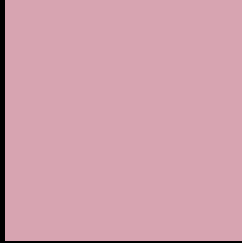
Large Text (above 18pt) WCAG AA × Fail

Any Text WCAG AA × Fail

Large Text (above 18pt) WCAG AAA × Fail

Any Text WCAG AAA × Fail

Black Background



This preview shows how the Hex color D7A4B1 looks on a black background.

Color Contrast Check

Large Text (above 18pt) WCAG AA ✓ Pass

Any Text WCAG AA ✓ Pass

Large Text (above 18pt) WCAG AAA ✓ Pass

Any Text WCAG AAA ✓ Pass

If you want to check with other color combinations, try the [Color Contrast Checker](#).

Hex D7A4B1 Background



This preview shows how black text looks on a background with the Hex color D7A4B1.

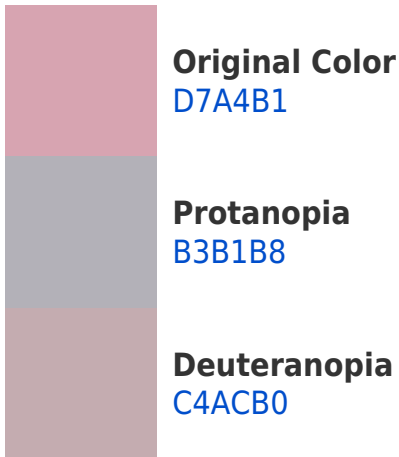


This preview shows how white text looks on a background with the Hex color D7A4B1.

Color Blindness Simulation

Color vision deficiency is a very complex topic, and I could not describe the different causes any better than Wikipedia does, so if you want to learn more, you should check out their [article about color blindness](#).

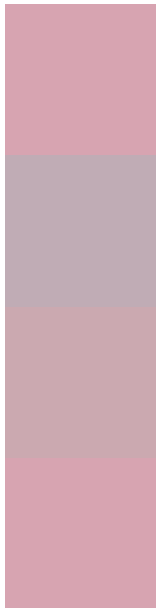
Dichromacy





Tritanopia
D7A4B1

Trichromacy



Original Color
D7A4B1

Protanomaly
C0ACB5

Deuteranomaly
CBA9B0

Tritanomaly
D7A4B1

Monochromacy



Original Color
D7A4B1

Achromatopsia
B5B5B5

Achromatomaly
C1AFB4

CSS Examples

Text

The CSS property to change the color of the text to Hex D7A4B1 is called "color". The color property can be set on classes, ids or directly on the HTML element.

This example shows how text in the color #D7A4B1 looks like.

```
.text, #text, p{  
    color:#D7A4B1  
}
```

If you want to add a text shadow in that color use the text-shadow property, you can generate a text shadow directly with our [CSS Text Shadow Generator](#).

Here you see how black text with a 4 pixel #D7A4B1 colored shadow looks like.

```
.shadow{ text-shadow: 4px 4px 2px #D7A4B1
}
```

Border

The CSS property to change the border of an element to Hex D7A4B1 is called "border". The border property can be set on classes, ids or directly on the HTML element.

This example shows the color as border, it can be applied via the CSS property "border" or "border-color".

```
.border, #border, table{ border:4px solid
#D7A4B1 }
```

If only the border color should be changed use the property `border-color`.

```
.border{ border-color:#D7A4B1 }
```

If you want to add a box shadow in that color use:

Here you see how a box with a 4 pixel #D7A4B1 colored shadow looks like.

```
.boxshadow{ -moz-box-shadow:4px 4px 4px  
4px #D7A4B1; -webkit-box-shadow:4px 4px  
4px 4px #D7A4B1; box-shadow:4px 4px 4px  
4px #D7A4B1 }
```

Background

The CSS property to change the background color of an element to Hex D7A4B1 is called "background". The background property can be set on classes, ids or directly on the HTML element.

```
.background, #background, body{  
background:#D7A4B1 }
```

If only the background color should be changed can be used:

```
.background{ background-color:#D7A4B1 }
```

This example shows the color as background, it is applied via the CSS property "background".

To optimize and compress your CSS code, you can use our [online CSS compressor and optimizer](#) based on csstidy. If you want to create a linear or radial gradient as background or border, check our [CSS Gradient Generator](#).

Hey! You found this booklet interesting? Support Converting Colors with the new Membership Option!

The pro membership hides all ads, plus gives you double the colors in the color bucket, and more awesome pro features!

[Learn more, Memberships starting at \\$2.50/m!](#)

**Follow me
on Twitter!**

@ConvertingColor