

Converting Colors

Hex(D7A6AD)

Have a look what the booklet for
Hex(D7A6AD) contains.

Hex(D7A6AD)	3
<i>Conversions</i>	4
<i>Details</i>	6
<i>Harmonies</i>	11
<i>Previews</i>	23
<i>Color Blindness Simulation</i>	26
<i>CSS Examples</i>	29

Color

Hex(D7A6AD)

Conversions

Conversions Part 1

Format	Color
Hex	D7A6AD
RGB	215, 166, 173
RGB Percent	84%, 65%, 68%
CMY	0.1569, 0.3490, 0.3216
CMYK	0.00, 0.23, 0.20, 0.16
HSL	351°, 38%, 75%
HSV	351°, 23%, 84%
XYZ	49.2034, 44.7366, 45.5769
YIQ	181.4490, 26.9570, 12.5650

Conversions

Conversions Part 2

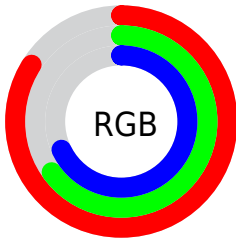
Format	Color
R _Y B	215, 166, 173
Decimal	14132909
CIE Lab	72.72, 19.07, 3.35
CIE LCh	73, 19.359, 9.974
Yxy	44.7366, 0.3527, 0.3207
Android (android.graphics.Color)	4292322989 (0xFFD7A6AD)
YUV	181.4490, -4.1654, 29.4242
Hunter-Lab	66.8855, 14.2616, 6.4186

Details

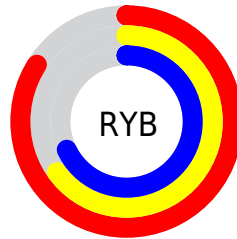
The Hex color **D7A6AD** is a light color, and the websafe version is hex **CC9999**. A complement of this color would be **A6D7D0**, and the grayscale version is **B5B5B5**.

A 20% lighter version of the original color is **FFDDE4**, and **9F7279** is the 20% darker color. If you saturate the color by 10%, you get **D7919B**, and if you desaturate by 10%, it is **D7BCBF**.

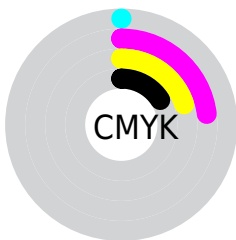
Distribution



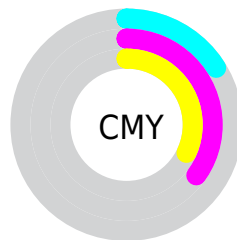
- Red (84%)
- Green (65%)
- Blue (68%)



- Red (84%)
- Yellow (65%)
- Blue (68%)



- Cyan (0%)
- Magenta (23%)
- Yellow (20%)
- Black (16%)



- Cyan (16%)
- Magenta (35%)
- Yellow (32%)

Brightness & Saturation Gradients

These gradients show how the Hex color D7A6AD changes by changing the brightness by 10 percent. The first figure shows a shift by +10% for each color and the second figure -10%.

Similar to the brightness gradients but the following saturation gradients show a change of the Hex color D7A6AD by changing the saturation by 10% instead.

 D7A6AD

 D7A6AD

FFFFFF

 BB8B92

 FFDDE4

 9F7279

 FFFAFF

 855960

 6B4148

 522B32

 3A151D

 260003

 000000

 D7A6AD

 D7A6AD

 D7919B

 D7BCBF

 D77B88

 D7D1D2

 D76676

 D7E7E4

 D75063

 D7FCF7

 D73B51

 D7FFFF

 D7253E

 D7102C

 D7001F

Harmonies

Analogous

The Analogous color harmony consists of three colors that are next to each other on the color wheel.



CEA7BF



D7A6AD



D5A89C

Triad

The Triadic color harmony groups three colors that are evenly spaced from another and form a triangle on the color wheel.



D7A6AD



A6B897



90B8D3

Complementary

The Complementary color scheme is a pair of colors which are on the opposite of each other on the color wheel.



D7A6AD



A6D7D0

Split Complementary

Split-complementary colors differ from the complementary color scheme. The scheme consists of three colors, the original color and two neighbors of the complement color.



84BBC8



D7A6AD



93BCA6

Square

The Square scheme is like the rectangle color scheme, but the four colors are evenly spaced on the color wheel.



D7A6AD



BAB390



85BDB8



A6B2D5

Rectangle

The Rectangle color scheme consists of four colors that form a rectangle on the color wheel.



D7A6AD



CFAB94



85BDB8



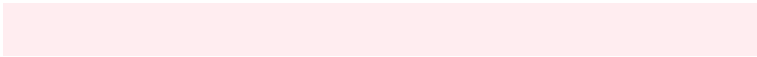
8BB9D0

Sweetspot

The Sweet Spot groups the original color and five complimentary colors.



D7A6AD



FFEDF0



D0A6D7



807577



000000



808080

Same Dimension

The Same Dimension uses a secret algorithm to generate beautiful new colors.



D7A6AD



FFBAC4



D7B7A6



6B6062



AB0018



2B0006

Inverse Universe

The Inverse Universe completely reimagines the original color for something new.



D7A6AD



FFBAC4



A6C6D7



6B6062



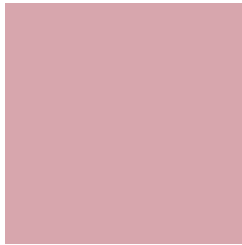
AB0018



2B0006

Previews

White Background



This preview shows how the Hex color D7A6AD looks on a white background.

Color Contrast Check

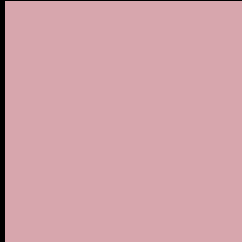
Large Text (above 18pt) WCAG AA × Fail

Any Text WCAG AA × Fail

Large Text (above 18pt) WCAG AAA × Fail

Any Text WCAG AAA × Fail

Black Background



This preview shows how the Hex color D7A6AD looks on a black background.

Color Contrast Check

Large Text (above 18pt) WCAG AA ✓ Pass

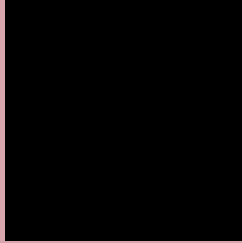
Any Text WCAG AA ✓ Pass

Large Text (above 18pt) WCAG AAA ✓ Pass

Any Text WCAG AAA ✓ Pass

If you want to check with other color combinations, try the [Color Contrast Checker](#).

Hex D7A6AD Background



This preview shows how black text looks on a background with the Hex color D7A6AD.

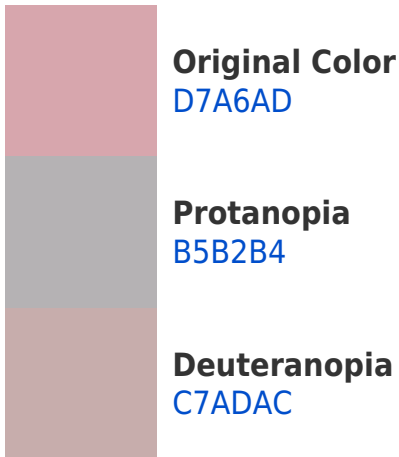


This preview shows how white text looks on a background with the Hex color D7A6AD.

Color Blindness Simulation

Color vision deficiency is a very complex topic, and I could not describe the different causes any better than Wikipedia does, so if you want to learn more, you should check out their [article about color blindness](#).

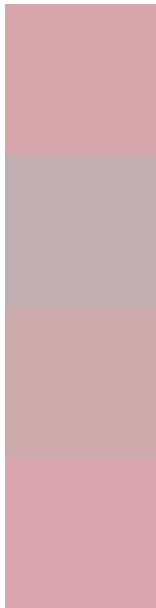
Dichromacy





Tritanopia
D8A5B2

Trichromacy



Original Color
D7A6AD

Protanomaly
C1AEB1

Deuteranomaly
CDAAAC

Tritanomaly
D8A5B0

Monochromacy



Original Color
D7A6AD

Achromatopsia
B5B5B5

Achromatomaly
C1B0B2

CSS Examples

Text

The CSS property to change the color of the text to Hex D7A6AD is called "color". The color property can be set on classes, ids or directly on the HTML element.

This example shows how text in the color #D7A6AD looks like.

```
.text, #text, p{  
    color:#D7A6AD  
}
```

If you want to add a text shadow in that color use the text-shadow property, you can generate a text shadow directly with our [CSS Text Shadow Generator](#).

Here you see how black text with a 4 pixel #D7A6AD colored shadow looks like.

```
.shadow{ text-shadow: 4px 4px 2px #D7A6AD }  
}
```

Border

The CSS property to change the border of an element to Hex D7A6AD is called "border". The border property can be set on classes, ids or directly on the HTML element.

This example shows the color as border, it can be applied via the CSS property "border" or "border-color".

```
.border, #border, table{ border:4px solid #D7A6AD }  
}
```

If only the border color should be changed use the property `border-color`.

```
.border{ border-color:#D7A6AD }
```

If you want to add a box shadow in that color use:

Here you see how a box with a 4 pixel #D7A6AD colored shadow looks like.

```
.boxshadow{ -moz-box-shadow:4px 4px 4px  
4px #D7A6AD; -webkit-box-shadow:4px 4px  
4px 4px #D7A6AD; box-shadow:4px 4px 4px  
4px #D7A6AD }
```

Background

The CSS property to change the background color of an element to Hex D7A6AD is called "background". The background property can be set on classes, ids or directly on the HTML element.

```
.background, #background, body{  
background:#D7A6AD }
```

If only the background color should be changed can be used:

```
.background{ background-color:#D7A6AD }
```

This example shows the color as background, it is applied via the CSS property "background".

To optimize and compress your CSS code, you can use our [online CSS compressor and optimizer](#) based on csstidy. If you want to create a linear or radial gradient as background or border, check our [CSS Gradient Generator](#).

Hey! You found this booklet interesting? Support Converting Colors with the new Membership Option!

The pro membership hides all ads, plus gives you double the colors in the color bucket, and more awesome pro features!

[Learn more, Memberships starting at \\$2.50/m!](#)

**Follow me
on Twitter!**

@ConvertingColor