

Converting Colors

Hex(D7A89F)

Have a look what the booklet for
Hex(D7A89F) contains.

Hex(D7A89F)	3
<i>Conversions</i>	4
<i>Details</i>	6
<i>Harmonies</i>	11
<i>Previews</i>	23
<i>Color Blindness Simulation</i>	26
<i>CSS Examples</i>	29

Color

Hex(D7A89F)

Conversions

Conversions Part 1

Format	Color
Hex	D7A89F
RGB	215, 168, 159
RGB Percent	84%, 66%, 62%
CMY	0.1569, 0.3412, 0.3765
CMYK	0.00, 0.22, 0.26, 0.16
HSL	10°, 41%, 73%
HSV	10°, 26%, 84%
XYZ	48.2850, 44.9555, 38.9333
YIQ	181.0270, 30.9010, 7.1650

Conversions

Conversions Part 2

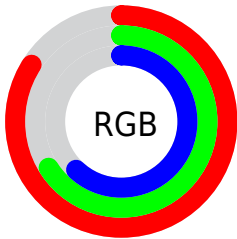
Format	Color
R _Y B	215, 170, 159
Decimal	14133407
CIE Lab	72.86, 15.93, 11.26
CIE LCh	73, 19.506, 35.246
Yxy	44.9555, 0.3653, 0.3401
Android (android.graphics.Color)	4292323487 (0xFFD7A89F)
YUV	181.0270, -10.8593, 29.7943
Hunter-Lab	67.0489, 11.2104, 12.5063

Details

The Hex color **D7A89F** is a light color, and the websafe version is hex **CC9999**. A complement of this color would be **9FCED7**, and the grayscale version is **B5B5B5**.

A 20% lighter version of the original color is **FFDFD6**, and **9F746C** is the 20% darker color. If you saturate the color by 10%, you get **D7968A**, and if you desaturate by 10%, it is **D7BAB5**.

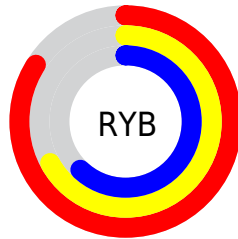
Distribution



Red (84%)

Green (66%)

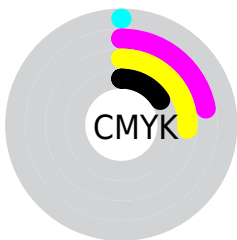
Blue (62%)



Red (84%)

Yellow (67%)

Blue (62%)

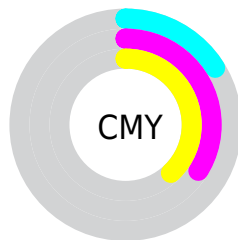


Cyan (0%)

Magenta (22%)

Yellow (26%)

Black (16%)



Cyan (16%)

Magenta (34%)

Yellow (38%)

Brightness & Saturation Gradients

These gradients show how the Hex color D7A89F changes by changing the brightness by 10 percent. The first figure shows a shift by +10% for each color and the second figure -10%.

Similar to the brightness gradients but the following saturation gradients show a change of the Hex color D7A89F by changing the saturation by 10% instead.

 D7A89F

 D7A89F

FFFFFF

 BB8D85

 FFDFD6

 9F746C

 FFFCF2

 845B53

 6A433C

 512D27

 391812

 240000

 000000

 D7A89F

 D7A89F

 D7968A

 D7BAB5

 D78474

 D7CCCA

 D7725E

 D7DEE0

 D76049

 D7F0F5

 D74E34

 D7FFFF

 D73C1E

 D72A08

 D72300

Harmonies

Analogous

The Analogous color harmony consists of three colors that are next to each other on the color wheel.



D7A6B0



D7A89F



CEAD93

Triad

The Triadic color harmony groups three colors that are evenly spaced from another and form a triangle on the color wheel.



D7A89F



96BCA3



A3B3D6

Complementary

The Complementary color scheme is a pair of colors which are on the opposite of each other on the color wheel.



D7A89F



9FCED7

Split Complementary

Split-complementary colors differ from the complementary color scheme. The scheme consists of three colors, the original color and two neighbors of the complement color.



8DB9D3



D7A89F



87BDB5

Square

The Square scheme is like the rectangle color scheme, but the four colors are evenly spaced on the color wheel.



D7A89F



AAB895



83BCC7



BAADD0

Rectangle

The Rectangle color scheme consists of four colors that form a rectangle on the color wheel.



D7A89F



C3B18F



83BCC7



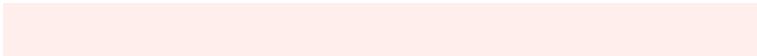
9BB5D6

Sweetspot

The Sweet Spot groups the original color and five complimentary colors.



D7A89F



FFEEEB



D79FCF



807573



000000



808080

Same Dimension

The Same Dimension uses a secret algorithm to generate beautiful new colors.



D7A89F



FFBDB0



D7C39F



6B6260



AB1B00



2B0700

Inverse Universe

The Inverse Universe completely reimagines the original color for something new.



9FCED7



B0F2FF



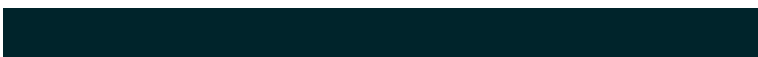
9FB3D7



60696B



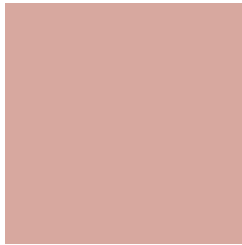
008FAB



00242B

Previews

White Background



This preview shows how the Hex color D7A89F looks on a white background.

Color Contrast Check

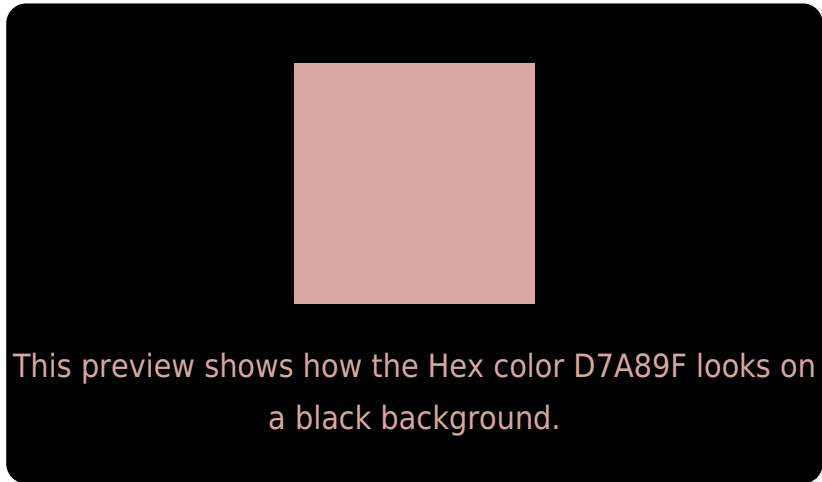
Large Text (above 18pt) WCAG AA × Fail

Any Text WCAG AA × Fail

Large Text (above 18pt) WCAG AAA × Fail

Any Text WCAG AAA × Fail

Black Background



Color Contrast Check

Large Text (above 18pt) WCAG AA ✓ Pass

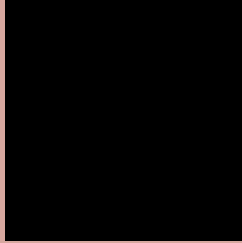
Any Text WCAG AA ✓ Pass

Large Text (above 18pt) WCAG AAA ✓ Pass

Any Text WCAG AAA ✓ Pass

If you want to check with other color combinations, try the [Color Contrast Checker](#).

Hex D7A89F Background



This preview shows how black text looks on a background with the Hex color D7A89F.

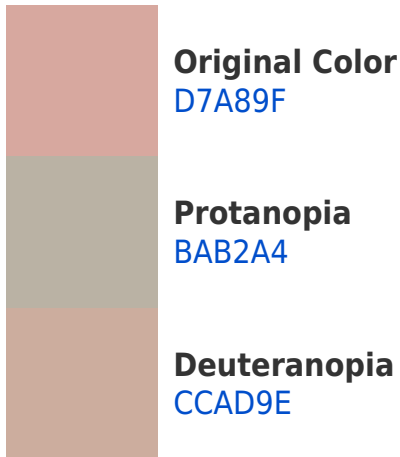


This preview shows how white text looks on a background with the Hex color D7A89F.

Color Blindness Simulation

Color vision deficiency is a very complex topic, and I could not describe the different causes any better than Wikipedia does, so if you want to learn more, you should check out their [article about color blindness](#).

Dichromacy





Tritanopia
D9A5B2

Trichromacy



Original Color
D7A89F

Protanomaly
C5AEA2

Deuteranomaly
D0AB9E

Tritanomaly
D8A6AB

Monochromacy



Original Color
D7A89F

Achromatopsia
B5B5B5

Achromatomaly
C1B0AD

CSS Examples

Text

The CSS property to change the color of the text to Hex D7A89F is called "color". The color property can be set on classes, ids or directly on the HTML element.

This example shows how text in the color #D7A89F looks like.

```
.text, #text, p{  
    color:#D7A89F  
}
```

If you want to add a text shadow in that color use the text-shadow property, you can generate a text shadow directly with our [CSS Text Shadow Generator](#).

Here you see how black text with a 4 pixel #D7A89F colored shadow looks like.

```
.shadow{ text-shadow: 4px 4px 2px #D7A89F
}
```

Border

The CSS property to change the border of an element to Hex D7A89F is called "border". The border property can be set on classes, ids or directly on the HTML element.

This example shows the color as border, it can be applied via the CSS property "border" or "border-color".

```
.border, #border, table{ border:4px solid
#D7A89F }
```

If only the border color should be changed use the property `border-color`.

```
.border{ border-color:#D7A89F }
```

If you want to add a box shadow in that color use:

Here you see how a box with a 4 pixel #D7A89F colored shadow looks like.

```
.boxshadow{ -moz-box-shadow:4px 4px 4px  
4px #D7A89F; -webkit-box-shadow:4px 4px  
4px 4px #D7A89F; box-shadow:4px 4px 4px  
4px #D7A89F }
```

Background

The CSS property to change the background color of an element to Hex D7A89F is called "background". The background property can be set on classes, ids or directly on the HTML element.

```
.background, #background, body{  
background:#D7A89F }
```

If only the background color should be changed can be used:

```
.background{ background-color:#D7A89F }
```

This example shows the color as background, it is applied via the CSS property "background".

To optimize and compress your CSS code, you can use our [online CSS compressor and optimizer](#) based on csstidy. If you want to create a linear or radial gradient as background or border, check our [CSS Gradient Generator](#).

Hey! You found this booklet interesting? Support Converting Colors with the new Membership Option!

The pro membership hides all ads, plus gives you double the colors in the color bucket, and more awesome pro features!

[Learn more, Memberships starting at \\$2.50/m!](#)

**Follow me
on Twitter!**

@ConvertingColor