

# Converting Colors

Hex(D7A99E)

Have a look what the booklet for  
Hex(D7A99E) contains.

<b>Hex(D7A99E)</b> .....	3
<i><b>Conversions</b></i> .....	4
<i><b>Details</b></i> .....	6
<i><b>Harmonies</b></i> .....	11
<i><b>Previews</b></i> .....	23
<i><b>Color Blindness Simulation</b></i> .....	26
<i><b>CSS Examples</b></i> .....	29

# **Color**

**Hex(D7A99E)**

# Conversions

## Conversions Part 1

Format	Color
Hex	D7A99E
RGB	215, 169, 158
RGB Percent	84%, 66%, 62%
CMY	0.1569, 0.3373, 0.3804
CMYK	0.00, 0.21, 0.27, 0.16
HSL	12°, 42%, 73%
HSV	12°, 27%, 84%
XYZ	48.3839, 45.2916, 38.5398
YIQ	181.5000, 30.9470, 6.3310

# Conversions

## Conversions Part 2

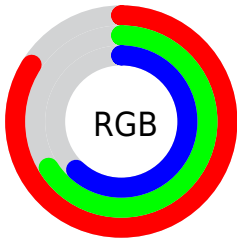
Format	Color
RYB	215, 172, 158
Decimal	14133662
CIELab	73.08, 15.25, 12.12
CIELCh	73, 19.478, 38.469
Yxy	45.2916, 0.3659, 0.3426
Android (android.graphics.Color)	4292323742 (0xFFD7A99E)
YUV	181.5000, -11.5855, 29.3795
Hunter-Lab	67.2991, 10.5571, 13.1560

# Details

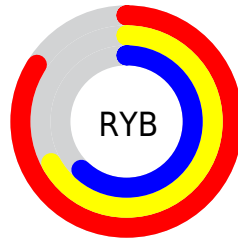
The Hex color **D7A99E** is a light color, and the websafe version is hex **CC9999**. A complement of this color would be **9ECCD7**, and the grayscale version is **B6B6B6**.

A 20% lighter version of the original color is **FFE0D5**, and **9F756B** is the 20% darker color. If you saturate the color by 10%, you get **D79889**, and if you desaturate by 10%, it is **D7BAB4**.

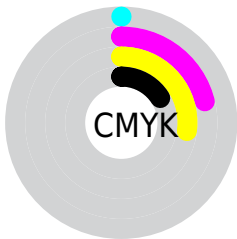
# Distribution



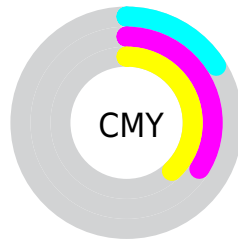
- Red (84%)
- Green (66%)
- Blue (62%)



- Red (84%)
- Yellow (67%)
- Blue (62%)



- Cyan (0%)
- Magenta (21%)
- Yellow (27%)
- Black (16%)



- Cyan (16%)
- Magenta (34%)
- Yellow (38%)

# Brightness & Saturation Gradients

These gradients show how the Hex color D7A99E changes by changing the brightness by 10 percent. The first figure shows a shift by +10% for each color and the second figure -10%.

Similar to the brightness gradients but the following saturation gradients show a change of the Hex color D7A99E by changing the saturation by 10% instead.



 D7A99E

 D7A99E

FFFFFF

 BB8E84


 FFE0D5

 9F756B

 FFFDF1

 845C52

 6A443B

 512E26

 391811

 240000

 000000

 D7A99E

 D7A99E

 D79889

 D7BAB4

 D78673

 D7CCC9

 D7755E

 D7DDDF

 D76448

 D7EEF4

 D75233

 D7FFFF

 D7411D

 D73008

 D72900

# Harmonies

## Analogous

The Analogous color harmony consists of three colors that are next to each other on the color wheel.



D8A7AF



D7A99E



CDAE93

# Triad

The Triadic color harmony groups three colors that are evenly spaced from another and form a triangle on the color wheel.



D7A99E



94BDA6



A6B3D6

# Complementary

The Complementary color scheme is a pair of colors which are on the opposite of each other on the color wheel.



D7A99E



9ECCD7

# Split Complementary

Split-complementary colors differ from the complementary color scheme. The scheme consists of three colors, the original color and two neighbors of the complement color.



90B9D4



D7A99E



86BEB8

# Square

The Square scheme is like the rectangle color scheme, but the four colors are evenly spaced on the color wheel.



D7A99E



A8B997



84BDC9



BDADCF

# Rectangle

The Rectangle color scheme consists of four colors that form a rectangle on the color wheel.



D7A99E



C2B290



84BDC9



9EB5D7

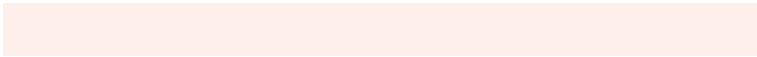


# Sweetspot

The Sweet Spot groups the original color and five complimentary colors.



D7A99E



FFEFE8



D79ECD



807573



000000



808080



# Same Dimension

The Same Dimension uses a secret algorithm to generate beautiful new colors.



D7A99E



FFBDAD



D7C59E



6B6260



AB2100



2B0800

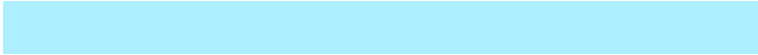


# Inverse Universe

The Inverse Universe completely reimagines the original color for something new.



9ECCD7



ADEFFF



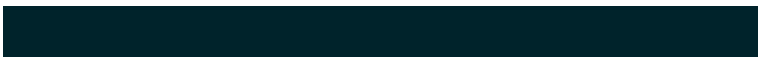
9EB0D7



60696B



008AAB

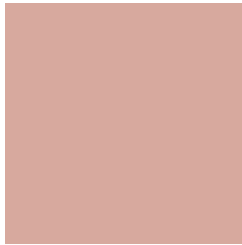


00232B



# Previews

## White Background



This preview shows how the Hex color D7A99E looks on a white background.

## Color Contrast Check

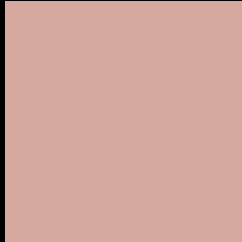
Large Text (above 18pt) WCAG AA × Fail

Any Text WCAG AA × Fail

Large Text (above 18pt) WCAG AAA × Fail

Any Text WCAG AAA × Fail

# Black Background



This preview shows how the Hex color D7A99E looks on a black background.

## Color Contrast Check

Large Text (above 18pt) WCAG AA ✓ Pass

Any Text WCAG AA ✓ Pass

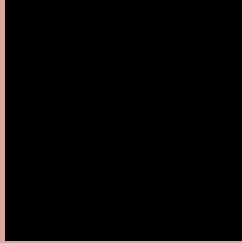
Large Text (above 18pt) WCAG AAA ✓ Pass

Any Text WCAG AAA ✓ Pass

If you want to check with other color combinations, try the [Color Contrast Checker](#).



## Hex D7A99E Background



This preview shows how black text looks on a background with the Hex color D7A99E.

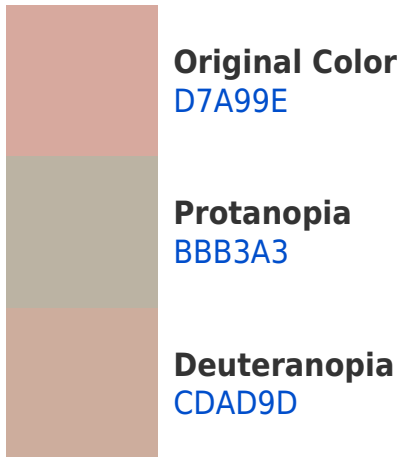


This preview shows how white text looks on a background with the Hex color D7A99E.

# Color Blindness Simulation

Color vision deficiency is a very complex topic, and I could not describe the different causes any better than Wikipedia does, so if you want to learn more, you should check out their [article about color blindness](#).

## Dichromacy





**Tritanopia**  
D9A6B3

# Trichromacy



**Original Color**  
D7A99E

**Protanomaly**  
C5AFA1

**Deuteranomaly**  
D1AC9D

**Tritanomaly**  
D8A7AB

# Monochromacy



**Original Color**  
D7A99E

**Achromatopsia**  
B6B6B6

**Achromatomaly**  
C2B1AD

# CSS Examples

## Text

The CSS property to change the color of the text to Hex D7A99E is called "color". The color property can be set on classes, ids or directly on the HTML element.

This example shows how text in the color #D7A99E looks like.

```
.text, #text, p{  
    color:#D7A99E  
}
```

If you want to add a text shadow in that color use the text-shadow property, you can generate a text shadow directly with our [CSS Text Shadow Generator](#).

Here you see how black text with a 4 pixel #D7A99E colored shadow looks like.

```
.shadow{ text-shadow: 4px 4px 2px #D7A99E
}
```

## Border

The CSS property to change the border of an element to Hex D7A99E is called "border". The border property can be set on classes, ids or directly on the HTML element.

This example shows the color as border, it can be applied via the CSS property "border" or "border-color".

```
.border, #border, table{ border:4px solid
#D7A99E }
```

If only the border color should be changed use the property `border-color`.

```
.border{ border-color:#D7A99E }
```

If you want to add a box shadow in that color use:

Here you see how a box with a 4 pixel #D7A99E colored shadow looks like.

```
.boxshadow{ -moz-box-shadow:4px 4px 4px  
4px #D7A99E; -webkit-box-shadow:4px 4px  
4px 4px #D7A99E; box-shadow:4px 4px 4px  
4px #D7A99E }
```

# Background

The CSS property to change the background color of an element to Hex D7A99E is called "background". The background property can be set on classes, ids or directly on the HTML element.

```
.background, #background, body{  
background:#D7A99E }
```

If only the background color should be changed can be used:

```
.background{ background-color:#D7A99E }
```

This example shows the color as background, it is applied via the CSS property "background".

To optimize and compress your CSS code, you can use our [online CSS compressor and optimizer](#) based on csstidy. If you want to create a linear or radial gradient as background or border, check our [CSS Gradient Generator](#).



Hey! You found this booklet interesting? Support Converting Colors with the new Membership Option!

The pro membership hides all ads, plus gives you double the colors in the color bucket, and more awesome pro features!

**[Learn more, Memberships starting at \\$2.50/m!](#)**

**Follow me  
on Twitter!**

@ConvertingColor