

# Converting Colors

Hex(D7AE83)

Have a look what the booklet for  
Hex(D7AE83) contains.

<b>Hex(D7AE83)</b> .....	3
<b><i>Conversions</i></b> .....	4
<b><i>Details</i></b> .....	6
<b><i>Harmonies</i></b> .....	11
<b><i>Previews</i></b> .....	23
<b><i>Color Blindness Simulation</i></b> .....	26
<b><i>CSS Examples</i></b> .....	29

# **Color**

**Hex(D7AE83)**

# Conversions

## Conversions Part 1

Format	Color
Hex	D7AE83
RGB	215, 174, 131
RGB Percent	84%, 68%, 51%
CMY	0.1569, 0.3176, 0.4863
CMYK	0.00, 0.19, 0.39, 0.16
HSL	31°, 51%, 68%
HSV	31°, 39%, 84%
XYZ	47.2571, 46.3579, 27.9300
YIQ	181.3570, 38.2390, -4.6810

# Conversions

## Conversions Part 2

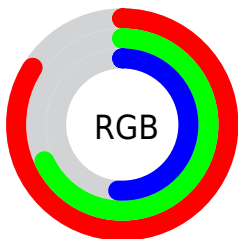
Format	Color
<b>R<sub>YB</sub></b>	211, 215, 131
Decimal	14134915
CIE Lab	73.78, 9.14, 27.71
CIE LCh	74, 29.179, 71.752
Yxy	46.3579, 0.3888, 0.3814
Android (android.graphics.Color)	4292324995 (0xFFD7AE83)
YUV	181.3570, -24.8260, 29.5049
Hunter-Lab	68.0866, 4.7406, 23.3391

# Details

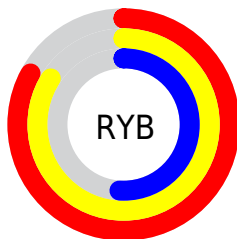
The Hex color **D7AE83** is a light color, and the websafe version is hex **CC9966**. A complement of this color would be **83ACD7**, and the grayscale version is **B6B6B6**.

A 20% lighter version of the original color is **FFE5B8**, and **9F7A51** is the 20% darker color. If you saturate the color by 10%, you get **D7A46E**, and if you desaturate by 10%, it is **D7B899**.

# Distribution



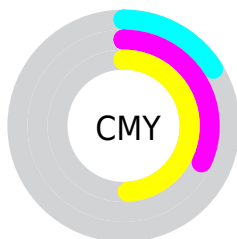
- Red (84%)
- Green (68%)
- Blue (51%)



- Red (83%)
- Yellow (84%)
- Blue (51%)



- Cyan (0%)
- Magenta (19%)
- Yellow (39%)
- Black (16%)



- Cyan (16%)
- Magenta (32%)
- Yellow (49%)

# Brightness & Saturation Gradients

These gradients show how the Hex color D7AE83 changes by changing the brightness by 10 percent. The first figure shows a shift by +10% for each color and the second figure -10%.

Similar to the brightness gradients but the following saturation gradients show a change of the Hex color D7AE83 by changing the saturation by 10% instead.



 D7AE83

 D7AE83

FFFFFF

 BA936A

 FFE5B8

 9F7A51

 FFFFD4

 83613A

 FFFFF1

 694923

 4F330D

 371D00

 1F0600

 000000

 D7AE83

 D7AE83

 D7A46E

 D7B899

 D79958

 D7C3AE

 D78F42

 D7CDC3

 D7842D

 D7D8D9

 D77A17

 D7E2EE

 D76F02

 D7EDFF

 D76E00

 D7F7FF

 D7FFFF

# Harmonies

## Analogous

The Analogous color harmony consists of three colors that are next to each other on the color wheel.



E7A693



D7AE83



BEB781

# Triad

The Triadic color harmony groups three colors that are evenly spaced from another and form a triangle on the color wheel.



D7AE83



69C4BF



C6ABDD

# Complementary

The Complementary color scheme is a pair of colors which are on the opposite of each other on the color wheel.



D7AE83



83ACD7

# Split Complementary

Split-complementary colors differ from the complementary color scheme. The scheme consists of three colors, the original color and two neighbors of the complement color.



A2B4E9



D7AE83



64C2D8

# Square

The Square scheme is like the rectangle color scheme, but the four colors are evenly spaced on the color wheel.



D7AE83



81C3A4



7DBDE7



E0A4C7

# Rectangle

The Rectangle color scheme consists of four colors that form a rectangle on the color wheel.



D7AE83



AABC87



7DBDE7



BBAEE3

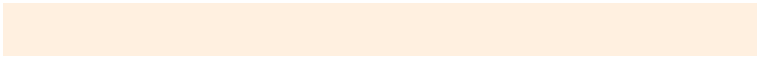


# Sweetspot

The Sweet Spot groups the original color and five complimentary colors.



D7AE83



FFF0E0



D783AD



80776E



000000



808080



# Same Dimension

The Same Dimension uses a secret algorithm to generate beautiful new colors.



D7AE83



FFC587



D7D783



6B6660



AB5700



2B1600

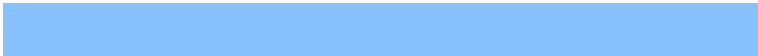


# Inverse Universe

The Inverse Universe completely reimagines the original color for something new.



83ACD7



87C2FF



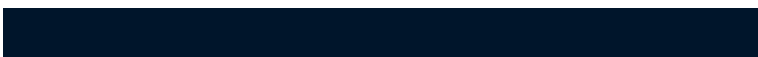
8383D7



60666B



0053AB



00152B



# Previews

## White Background



This preview shows how the Hex color D7AE83 looks on a white background.

## Color Contrast Check

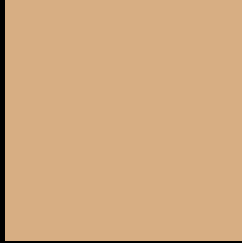
Large Text (above 18pt) WCAG AA × Fail

Any Text WCAG AA × Fail

Large Text (above 18pt) WCAG AAA × Fail

Any Text WCAG AAA × Fail

# Black Background



This preview shows how the Hex color D7AE83 looks on a black background.

## Color Contrast Check

Large Text (above 18pt) WCAG AA ✓ Pass

Any Text WCAG AA ✓ Pass

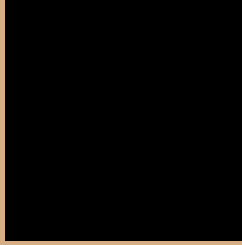
Large Text (above 18pt) WCAG AAA ✓ Pass

Any Text WCAG AAA ✓ Pass

If you want to check with other color combinations, try the [Color Contrast Checker](#).



## Hex D7AE83 Background



This preview shows how black text looks on a background with the Hex color D7AE83.

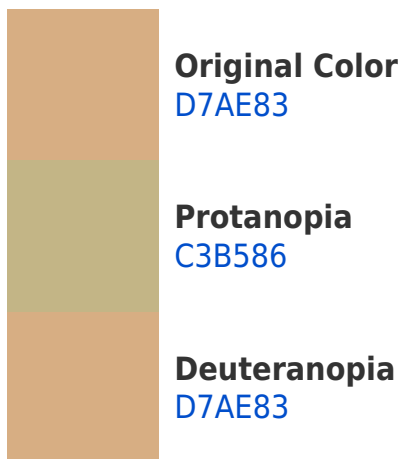


This preview shows how white text looks on a background with the Hex color D7AE83.

# Color Blindness Simulation

Color vision deficiency is a very complex topic, and I could not describe the different causes any better than Wikipedia does, so if you want to learn more, you should check out their [article about color blindness](#).

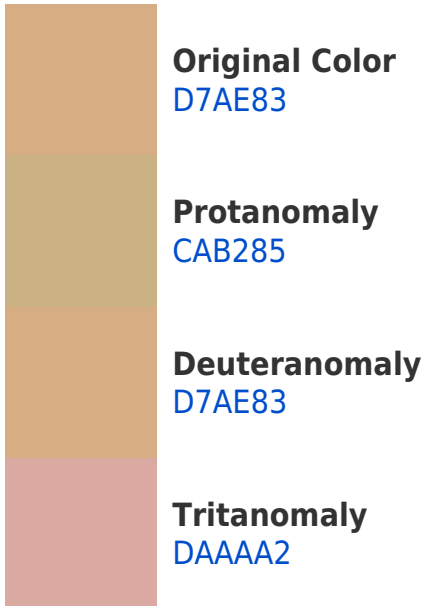
## Dichromacy





**Tritanopia**  
DCA7B4

# Trichromacy



# Monochromacy



# CSS Examples

## Text

The CSS property to change the color of the text to Hex D7AE83 is called "color". The color property can be set on classes, ids or directly on the HTML element.

This example shows how text in the color #D7AE83 looks like.

```
.text, #text, p{  
    color:#D7AE83  
}
```

If you want to add a text shadow in that color use the text-shadow property, you can generate a text shadow directly with our [CSS Text Shadow Generator](#).

Here you see how black text with a 4 pixel #D7AE83 colored shadow looks like.

```
.shadow{ text-shadow: 4px 4px 2px #D7AE83
}
```

## Border

The CSS property to change the border of an element to Hex D7AE83 is called "border". The border property can be set on classes, ids or directly on the HTML element.

This example shows the color as border, it can be applied via the CSS property "border" or "border-color".

```
.border, #border, table{ border:4px solid
#D7AE83 }
```

If only the border color should be changed use the property `border-color`.

```
.border{ border-color:#D7AE83 }
```

If you want to add a box shadow in that color use:

Here you see how a box with a 4 pixel #D7AE83 colored shadow looks like.

```
.boxshadow{ -moz-box-shadow:4px 4px 4px  
4px #D7AE83; -webkit-box-shadow:4px 4px  
4px 4px #D7AE83; box-shadow:4px 4px 4px  
4px #D7AE83 }
```

# Background

The CSS property to change the background color of an element to Hex D7AE83 is called "background". The background property can be set on classes, ids or directly on the HTML element.

```
.background, #background, body{  
background:#D7AE83 }
```

If only the background color should be changed can be used:

```
.background{ background-color:#D7AE83 }
```

This example shows the color as background, it is applied via the CSS property "background".

To optimize and compress your CSS code, you can use our [online CSS compressor and optimizer](#) based on csstidy. If you want to create a linear or radial gradient as background or border, check our [CSS Gradient Generator](#).



Hey! You found this booklet interesting? Support Converting Colors with the new Membership Option!

The pro membership hides all ads, plus gives you double the colors in the color bucket, and more awesome pro features!

**[Learn more, Memberships starting at \\$2.50/m!](#)**

**Follow me  
on Twitter!**

@ConvertingColor