

# Converting Colors

Hex(D7B0B8)

Have a look what the booklet for  
Hex(D7B0B8) contains.

<b>Hex(D7B0B8)</b> .....	3
<i><b>Conversions</b></i> .....	4
<i><b>Details</b></i> .....	6
<i><b>Harmonies</b></i> .....	11
<i><b>Previews</b></i> .....	23
<i><b>Color Blindness Simulation</b></i> .....	26
<i><b>CSS Examples</b></i> .....	29

# **Color**

**Hex(D7B0B8)**

# Conversions

## Conversions Part 1

Format	Color
Hex	D7B0B8
RGB	215, 176, 184
RGB Percent	84%, 69%, 72%
CMY	0.1569, 0.3098, 0.2784
CMYK	0.00, 0.18, 0.14, 0.16
HSL	348°, 33%, 77%
HSV	348°, 18%, 84%
XYZ	52.2014, 48.9584, 52.0460
YIQ	188.5730, 20.6760, 10.7560

# Conversions

## Conversions Part 2

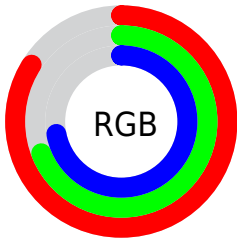
Format	Color
R <sub>Y</sub> B	215, 176, 184
Decimal	14135480
CIE Lab	75.43, 15.39, 1.25
CIE LCh	75, 15.442, 4.655
Yxy	48.9584, 0.3407, 0.3196
Android (android.graphics.Color)	4292325560 (0xFFD7B0B8)
YUV	188.5730, -2.2545, 23.1765
Hunter-Lab	69.9703, 10.7220, 4.8775

# Details

The Hex color **D7B0B8** is a light color, and the websafe version is hex **CC9999**. A complement of this color would be **B0D7CF**, and the grayscale version is **BDBDBD**.

A 20% lighter version of the original color is **FFE8F0**, and **A07B83** is the 20% darker color. If you saturate the color by 10%, you get **D79BA7**, and if you desaturate by 10%, it is **D7C6C9**.

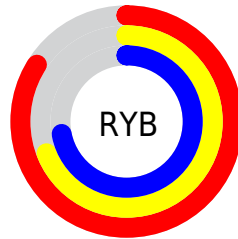
# Distribution



Red (84%)

Green (69%)

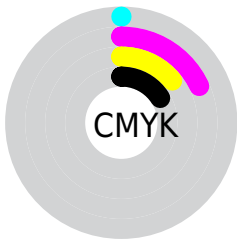
Blue (72%)



Red (84%)

Yellow (69%)

Blue (72%)

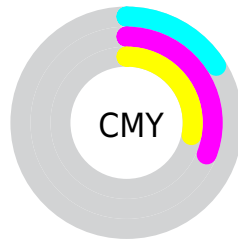


Cyan (0%)

Magenta (18%)

Yellow (14%)

Black (16%)



Cyan (16%)

Magenta (31%)

Yellow (28%)

# Brightness & Saturation Gradients

These gradients show how the Hex color D7B0B8 changes by changing the brightness by 10 percent. The first figure shows a shift by +10% for each color and the second figure -10%.

Similar to the brightness gradients but the following saturation gradients show a change of the Hex color D7B0B8 by changing the saturation by 10% instead.



 D7B0B8

 D7B0B8

FFFFFF

 BB959D

 FFE8F0

 A07B83

 85626A

 6C4A52

 53333B

 3B1E25

 250810

 000000

 D7B0B8

 D7B0B8

 D79BA7

 D7C6C9

 D78596

 D7DBDA

 D77085

 D7F1EB

 D75A74

 D7FFFC

 D74563

 D7FFFF

 D72F51

 D71A40

 D7042F

 D7002C

# Harmonies

## Analogous

The Analogous color harmony consists of three colors that are next to each other on the color wheel.



CFB2C6



D7B0B8



D7B1AA

# Triad

The Triadic color harmony groups three colors that are evenly spaced from another and form a triangle on the color wheel.



D7B0B8



B3BEA2



9DBFD3

# Complementary

The Complementary color scheme is a pair of colors which are on the opposite of each other on the color wheel.



D7B0B8



B0D7CF

# Split Complementary

Split-complementary colors differ from the complementary color scheme. The scheme consists of three colors, the original color and two neighbors of the complement color.



95C1C9



D7B0B8



A3C1AD

# Square

The Square scheme is like the rectangle color scheme, but the four colors are evenly spaced on the color wheel.



D7B0B8



C3B99E



98C2BC



ADBAD6

# Rectangle

The Rectangle color scheme consists of four colors that form a rectangle on the color wheel.



D7B0B8



D3B3A3



98C2BC



99C0D0

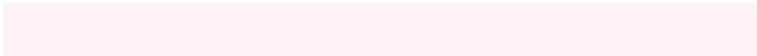


# Sweetspot

The Sweet Spot groups the original color and five complimentary colors.



D7B0B8



FFF2F5



CFB0D7



807879



000000



808080



# Same Dimension

The Same Dimension uses a secret algorithm to generate beautiful new colors.



D7B0B8



FFC7D2



D7BBB0



6B6063



AB0023



2B0009



# Inverse Universe

The Inverse Universe completely reimagines the original color for something new.



D7B0B8



FFC7D2



B0CCD7



6B6063



AB0023

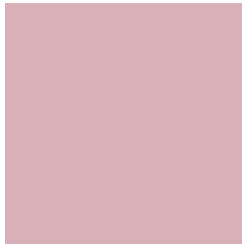


2B0009



# Previews

## White Background



This preview shows how the Hex color D7B0B8 looks on a white background.

## Color Contrast Check

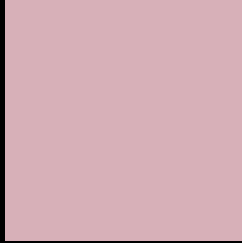
Large Text (above 18pt) WCAG AA × Fail

Any Text WCAG AA × Fail

Large Text (above 18pt) WCAG AAA × Fail

Any Text WCAG AAA × Fail

# Black Background



This preview shows how the Hex color D7B0B8 looks on a black background.

## Color Contrast Check

Large Text (above 18pt) WCAG AA ✓ Pass

Any Text WCAG AA ✓ Pass

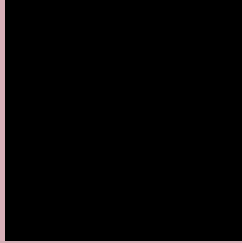
Large Text (above 18pt) WCAG AAA ✓ Pass

Any Text WCAG AAA ✓ Pass

If you want to check with other color combinations, try the [Color Contrast Checker](#).



## Hex D7B0B8 Background



This preview shows how black text looks on a background with the Hex color D7B0B8.



This preview shows how white text looks on a background with the Hex color D7B0B8.

# Color Blindness Simulation

Color vision deficiency is a very complex topic, and I could not describe the different causes any better than Wikipedia does, so if you want to learn more, you should check out their [article about color blindness](#).

## Dichromacy





**Tritanopia**  
D8AFBD

# Trichromacy



**Original Color**  
D7B0B8

**Protanomaly**  
C6B6BB

**Deuteranomaly**  
D1B3B7

**Tritanomaly**  
D8AFBB

# Monochromacy



**Original Color**  
D7B0B8

**Achromatopsia**  
BDBDBD

**Achromatomaly**  
C6B8BB

# CSS Examples

## Text

The CSS property to change the color of the text to Hex D7B0B8 is called "color". The color property can be set on classes, ids or directly on the HTML element.

This example shows how text in the color #D7B0B8 looks like.

```
.text, #text, p{  
    color:#D7B0B8  
}
```

If you want to add a text shadow in that color use the text-shadow property, you can generate a text shadow directly with our [CSS Text Shadow Generator](#).

Here you see how black text with a 4 pixel #D7B0B8 colored shadow looks like.

```
.shadow{ text-shadow: 4px 4px 2px #D7B0B8
}
```

## Border

The CSS property to change the border of an element to Hex D7B0B8 is called "border". The border property can be set on classes, ids or directly on the HTML element.

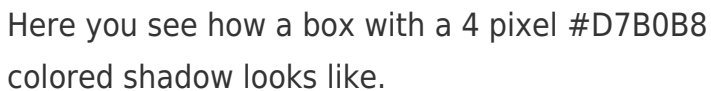
This example shows the color as border, it can be applied via the CSS property "border" or "border-color".

```
.border, #border, table{ border:4px solid
#D7B0B8 }
```

If only the border color should be changed use the property `border-color`.

```
.border{ border-color:#D7B0B8 }
```

If you want to add a box shadow in that color use:



Here you see how a box with a 4 pixel #D7B0B8 colored shadow looks like.

```
.boxshadow{ -moz-box-shadow:4px 4px 4px  
4px #D7B0B8; -webkit-box-shadow:4px 4px  
4px 4px #D7B0B8; box-shadow:4px 4px 4px  
4px #D7B0B8 }
```

# Background

The CSS property to change the background color of an element to Hex D7B0B8 is called "background". The background property can be set on classes, ids or directly on the HTML element.

```
.background, #background, body{  
background:#D7B0B8 }
```

If only the background color should be changed can be used:

```
.background{ background-color:#D7B0B8 }
```

This example shows the color as background, it is applied via the CSS property "background".

To optimize and compress your CSS code, you can use our [online CSS compressor and optimizer](#) based on csstidy. If you want to create a linear or radial gradient as background or border, check our [CSS Gradient Generator](#).



Hey! You found this booklet interesting? Support Converting Colors with the new Membership Option!

The pro membership hides all ads, plus gives you double the colors in the color bucket, and more awesome pro features!

**[Learn more, Memberships starting at \\$2.50/m!](#)**

**Follow me  
on Twitter!**

@ConvertingColor