

Converting Colors

Hex(D7B1A5)

Have a look what the booklet for
Hex(D7B1A5) contains.

Hex(D7B1A5)	3
<i>Conversions</i>	4
<i>Details</i>	6
<i>Harmonies</i>	11
<i>Previews</i>	23
<i>Color Blindness Simulation</i>	26
<i>CSS Examples</i>	29

Color

Hex(D7B1A5)

Conversions

Conversions Part 1

Format	Color
Hex	D7B1A5
RGB	215, 177, 165
RGB Percent	84%, 69%, 65%
CMY	0.1569, 0.3059, 0.3529
CMYK	0.00, 0.18, 0.23, 0.16
HSL	14°, 38%, 75%
HSV	14°, 23%, 84%
XYZ	50.5380, 48.6080, 42.3159
YIQ	186.9940, 26.5000, 4.3240

Conversions

Conversions Part 2

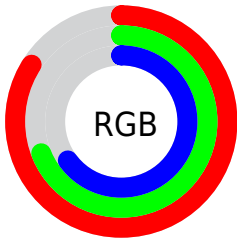
Format	Color
R _Y B	215, 181, 165
Decimal	14135717
CIE Lab	75.21, 11.94, 11.30
CIE LCh	75, 16.438, 43.431
Yxy	48.6080, 0.3573, 0.3436
Android (android.graphics.Color)	4292325797 (0xFFD7B1A5)
YUV	186.9940, -10.8430, 24.5613
Hunter-Lab	69.7194, 7.3816, 12.8177

Details

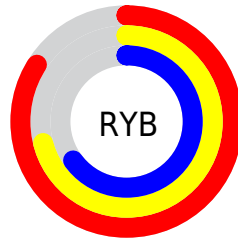
The Hex color **D7B1A5** is a light color, and the websafe version is hex **CC9999**. A complement of this color would be **A5CBD7**, and the grayscale version is **BBBBBB**.

A 20% lighter version of the original color is **FFE9DC**, and **A07C71** is the 20% darker color. If you saturate the color by 10%, you get **D7A190**, and if you desaturate by 10%, it is **D7C1BB**.

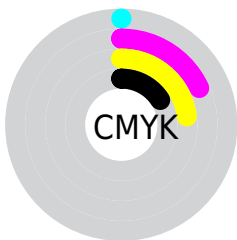
Distribution



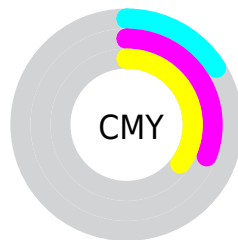
- Red (84%)
- Green (69%)
- Blue (65%)



- Red (84%)
- Yellow (71%)
- Blue (65%)



- Cyan (0%)
- Magenta (18%)
- Yellow (23%)
- Black (16%)



- Cyan (16%)
- Magenta (31%)
- Yellow (35%)

Brightness & Saturation Gradients

These gradients show how the Hex color D7B1A5 changes by changing the brightness by 10 percent. The first figure shows a shift by +10% for each color and the second figure -10%.

Similar to the brightness gradients but the following saturation gradients show a change of the Hex color D7B1A5 by changing the saturation by 10% instead.

 D7B1A5

 D7B1A5

FFFFFF

 BB968B

 FFE9DC

 A07C71

 FFFFF9

 856359

 6B4B41

 52352B

 3A1F17

 250900

 000000

 D7B1A5

 D7B1A5

 D7A190

 D7C1BB

 D7907A

 D7D2D0

 D78065

 D7E2E6

 D7704F

 D7F2FB

 D75F3A

 D7FFFF

 D74F24

 D73F0E

 D73400

Harmonies

Analogous

The Analogous color harmony consists of three colors that are next to each other on the color wheel.



D9AFB3



D7B1A5



CDB59D

Triad

The Triadic color harmony groups three colors that are evenly spaced from another and form a triangle on the color wheel.



D7B1A5



9DC1B0



B1B8D6

Complementary

The Complementary color scheme is a pair of colors which are on the opposite of each other on the color wheel.



D7B1A5



A5CBD7

Split Complementary

Split-complementary colors differ from the complementary color scheme. The scheme consists of three colors, the original color and two neighbors of the complement color.



9FBDD6



D7B1A5



93C2C0

Square

The Square scheme is like the rectangle color scheme, but the four colors are evenly spaced on the color wheel.



D7B1A5



ADBFA3



93C1CD



C4B3CF

Rectangle

The Rectangle color scheme consists of four colors that form a rectangle on the color wheel.



D7B1A5



C4B99B



93C1CD



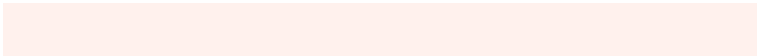
ABBAD7

Sweetspot

The Sweet Spot groups the original color and five complimentary colors.



D7B1A5



FFF1ED



D7A5CB



807875



000000



808080

Same Dimension

The Same Dimension uses a secret algorithm to generate beautiful new colors.



D7B1A5



FFC9B8



D7CAA5



6B6360



AB2900



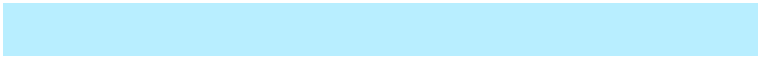
2B0A00

Inverse Universe

The Inverse Universe completely reimagines the original color for something new.



A5CBD7



B8EEFF



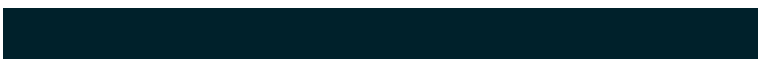
A5B2D7



60696B



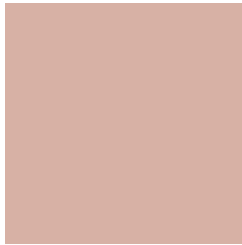
0082AB



00212B

Previews

White Background



This preview shows how the Hex color D7B1A5 looks on a white background.

Color Contrast Check

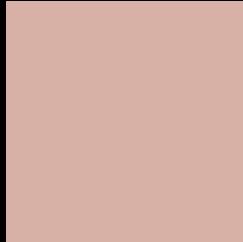
Large Text (above 18pt) WCAG AA × Fail

Any Text WCAG AA × Fail

Large Text (above 18pt) WCAG AAA × Fail

Any Text WCAG AAA × Fail

Black Background



This preview shows how the Hex color D7B1A5 looks on a black background.

Color Contrast Check

Large Text (above 18pt) WCAG AA ✓ Pass

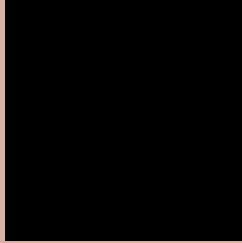
Any Text WCAG AA ✓ Pass

Large Text (above 18pt) WCAG AAA ✓ Pass

Any Text WCAG AAA ✓ Pass

If you want to check with other color combinations, try the [Color Contrast Checker](#).

Hex D7B1A5 Background



This preview shows how black text looks on a background with the Hex color D7B1A5.

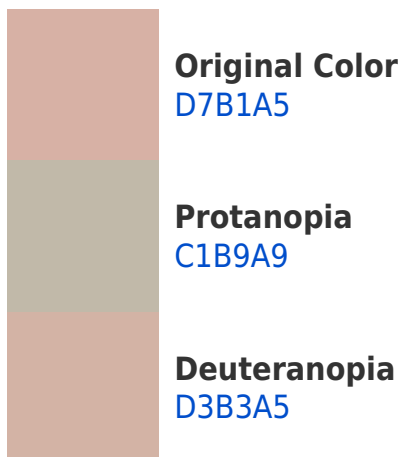


This preview shows how white text looks on a background with the Hex color D7B1A5.

Color Blindness Simulation

Color vision deficiency is a very complex topic, and I could not describe the different causes any better than Wikipedia does, so if you want to learn more, you should check out their [article about color blindness](#).

Dichromacy



Trichromacy



Original Color
D7B1A5

Protanomaly
C9B6A8

Deuteranomaly
D4B2A5

Tritanomaly
D9AFB3

Monochromacy



Original Color
D7B1A5

Achromatopsia
BBBBBB

Achromatomaly
C5B7B3

CSS Examples

Text

The CSS property to change the color of the text to Hex D7B1A5 is called "color". The color property can be set on classes, ids or directly on the HTML element.

This example shows how text in the color #D7B1A5 looks like.

```
.text, #text, p{  
    color:#D7B1A5  
}
```

If you want to add a text shadow in that color use the text-shadow property, you can generate a text shadow directly with our [CSS Text Shadow Generator](#).

Here you see how black text with a 4 pixel #D7B1A5 colored shadow looks like.

```
.shadow{ text-shadow: 4px 4px 2px #D7B1A5
}
```

Border

The CSS property to change the border of an element to Hex D7B1A5 is called "border". The border property can be set on classes, ids or directly on the HTML element.

This example shows the color as border, it can be applied via the CSS property "border" or "border-color".

```
.border, #border, table{ border:4px solid
#D7B1A5 }
```

If only the border color should be changed use the property `border-color`.

```
.border{ border-color:#D7B1A5 }
```

If you want to add a box shadow in that color use:

Here you see how a box with a 4 pixel #D7B1A5 colored shadow looks like.

```
.boxshadow{ -moz-box-shadow:4px 4px 4px  
4px #D7B1A5; -webkit-box-shadow:4px 4px  
4px 4px #D7B1A5; box-shadow:4px 4px 4px  
4px #D7B1A5 }
```

Background

The CSS property to change the background color of an element to Hex D7B1A5 is called "background". The background property can be set on classes, ids or directly on the HTML element.

```
.background, #background, body{  
background:#D7B1A5 }
```

If only the background color should be changed can be used:

```
.background{ background-color:#D7B1A5 }
```

This example shows the color as background, it is applied via the CSS property "background".

To optimize and compress your CSS code, you can use our [online CSS compressor and optimizer](#) based on csstidy. If you want to create a linear or radial gradient as background or border, check our [CSS Gradient Generator](#).

Hey! You found this booklet interesting? Support Converting Colors with the new Membership Option!

The pro membership hides all ads, plus gives you double the colors in the color bucket, and more awesome pro features!

[Learn more, Memberships starting at \\$2.50/m!](#)

**Follow me
on Twitter!**

@ConvertingColor