

Converting Colors

Hex(D7B1AC)

Have a look what the booklet for
Hex(D7B1AC) contains.

Hex(D7B1AC)	3
<i>Conversions</i>	4
<i>Details</i>	6
<i>Harmonies</i>	11
<i>Previews</i>	23
<i>Color Blindness Simulation</i>	26
<i>CSS Examples</i>	29

Color

Hex(D7B1AC)

Conversions

Conversions Part 1

Format	Color
Hex	D7B1AC
RGB	215, 177, 172
RGB Percent	84%, 69%, 67%
CMY	0.1569, 0.3059, 0.3255
CMYK	0.00, 0.18, 0.20, 0.16
HSL	7°, 35%, 76%
HSV	7°, 20%, 84%
XYZ	51.1929, 48.8699, 45.7644
YIQ	187.7920, 24.2530, 6.5010

Conversions

Conversions Part 2

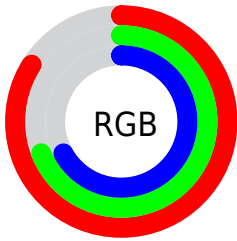
Format	Color
RYB	215, 178, 172
Decimal	14135724
CIELab	75.37, 12.97, 7.72
CIELCh	75, 15.098, 30.757
Yxy	48.8699, 0.3511, 0.3351
Android (android.graphics.Color)	4292325804 (0xFFD7B1AC)
YUV	187.7920, -7.7855, 23.8614
Hunter-Lab	69.9070, 8.3782, 10.1209

Details

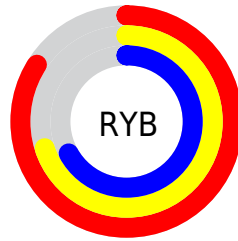
The Hex color **D7B1AC** is a light color, and the websafe version is hex **CC9999**. A complement of this color would be **ACD2D7**, and the grayscale version is **BCBCBC**.

A 20% lighter version of the original color is **FFE9E3**, and **A07C78** is the 20% darker color. If you saturate the color by 10%, you get **D79E97**, and if you desaturate by 10%, it is **D7C4C2**.

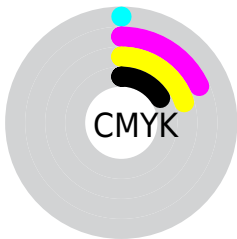
Distribution



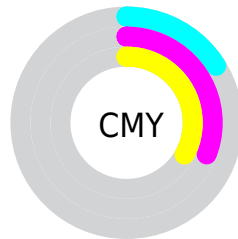
- Red (84%)
- Green (69%)
- Blue (67%)



- Red (84%)
- Yellow (70%)
- Blue (67%)



- Cyan (0%)
- Magenta (18%)
- Yellow (20%)
- Black (16%)



- Cyan (16%)
- Magenta (31%)
- Yellow (33%)

Brightness & Saturation Gradients

These gradients show how the Hex color D7B1AC changes by changing the brightness by 10 percent. The first figure shows a shift by +10% for each color and the second figure -10%.

Similar to the brightness gradients but the following saturation gradients show a change of the Hex color D7B1AC by changing the saturation by 10% instead.

 D7B1AC

FFFFFF

 FFE9E3

 D7B1AC

 BB9691

 A07C78

 85635F

 6B4B47

 523531

 3B1F1C

 250901

 000000

 D7B1AC

 D7B1AC

 D79E97

 D7C4C2

 D78B81

 D7D7D7

 D7786C

 D7EAED

 D76556

 D7FDFF

 D75241

 D7FFFF

 D73F2B

 D72C15

 D71900

Harmonies

Analogous

The Analogous color harmony consists of three colors that are next to each other on the color wheel.



D6B0BA



D7B1AC



D1B4A2

Triad

The Triadic color harmony groups three colors that are evenly spaced from another and form a triangle on the color wheel.



D7B1AC



A5C0AC



ABBBD5

Complementary

The Complementary color scheme is a pair of colors which are on the opposite of each other on the color wheel.



D7B1AC



ACD2D7

Split Complementary

Split-complementary colors differ from the complementary color scheme. The scheme consists of three colors, the original color and two neighbors of the complement color.



9CBFD1



D7B1AC



9AC2B9

Square

The Square scheme is like the rectangle color scheme, but the four colors are evenly spaced on the color wheel.



D7B1AC



B5BDA2



96C1C7



BDB6D1

Rectangle

The Rectangle color scheme consists of four colors that form a rectangle on the color wheel.



D7B1AC



C9B79E



96C1C7



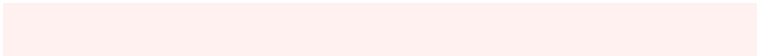
A5BCD5

Sweetspot

The Sweet Spot groups the original color and five complimentary colors.



D7B1AC



FFF1F0



D7ACD3



807877



000000



808080

Same Dimension

The Same Dimension uses a secret algorithm to generate beautiful new colors.



D7B1AC



FFC9C2



D7C6AC



6B6260



AB1400



2B0500

Inverse Universe

The Inverse Universe completely reimagines the original color for something new.



ACD2D7



C2F8FF



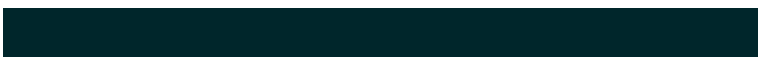
ACBDD7



606A6B



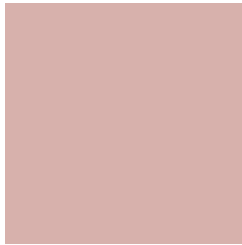
0097AB



00262B

Previews

White Background



This preview shows how the Hex color D7B1AC looks on a white background.

Color Contrast Check

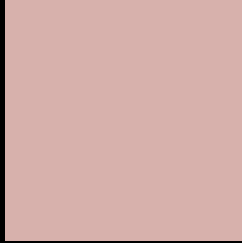
Large Text (above 18pt) WCAG AA × Fail

Any Text WCAG AA × Fail

Large Text (above 18pt) WCAG AAA × Fail

Any Text WCAG AAA × Fail

Black Background



This preview shows how the Hex color D7B1AC looks on a black background.

Color Contrast Check

Large Text (above 18pt) WCAG AA ✓ Pass

Any Text WCAG AA ✓ Pass

Large Text (above 18pt) WCAG AAA ✓ Pass

Any Text WCAG AAA ✓ Pass

If you want to check with other color combinations, try the [Color Contrast Checker](#).

Hex D7B1AC Background



This preview shows how black text looks on a background with the Hex color D7B1AC.

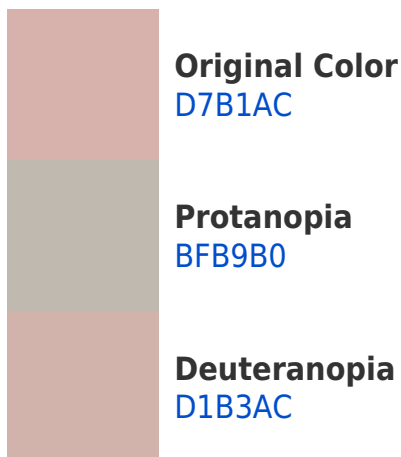


This preview shows how white text looks on a background with the Hex color D7B1AC.

Color Blindness Simulation

Color vision deficiency is a very complex topic, and I could not describe the different causes any better than Wikipedia does, so if you want to learn more, you should check out their [article about color blindness](#).

Dichromacy





Tritanopia
D9AFBC

Trichromacy



Original Color
D7B1AC

Protanomaly
C8B6AF

Deuteranomaly
D3B2AC

Tritanomaly
D8B0B6

Monochromacy



Original Color
D7B1AC

Achromatopsia
BCBCBC

Achromatomaly
C6B8B6

CSS Examples

Text

The CSS property to change the color of the text to Hex D7B1AC is called "color". The color property can be set on classes, ids or directly on the HTML element.

This example shows how text in the color #D7B1AC looks like.

```
.text, #text, p{  
    color:#D7B1AC  
}
```

If you want to add a text shadow in that color use the text-shadow property, you can generate a text shadow directly with our [CSS Text Shadow Generator](#).

Here you see how black text with a 4 pixel #D7B1AC colored shadow looks like.

```
.shadow{ text-shadow: 4px 4px 2px #D7B1AC
}
```

Border

The CSS property to change the border of an element to Hex D7B1AC is called "border". The border property can be set on classes, ids or directly on the HTML element.

This example shows the color as border, it can be applied via the CSS property "border" or "border-color".

```
.border, #border, table{ border:4px solid
#D7B1AC }
```

If only the border color should be changed use the property `border-color`.

```
.border{ border-color:#D7B1AC }
```

If you want to add a box shadow in that color use:

Here you see how a box with a 4 pixel #D7B1AC colored shadow looks like.

```
.boxshadow{ -moz-box-shadow:4px 4px 4px  
4px #D7B1AC; -webkit-box-shadow:4px 4px  
4px 4px #D7B1AC; box-shadow:4px 4px 4px  
4px #D7B1AC }
```

Background

The CSS property to change the background color of an element to Hex D7B1AC is called "background". The background property can be set on classes, ids or directly on the HTML element.

```
.background, #background, body{  
background:#D7B1AC }
```

If only the background color should be changed can be used:

```
.background{ background-color:#D7B1AC }
```

This example shows the color as background, it is applied via the CSS property "background".

To optimize and compress your CSS code, you can use our [online CSS compressor and optimizer](#) based on csstidy. If you want to create a linear or radial gradient as background or border, check our [CSS Gradient Generator](#).

Hey! You found this booklet interesting? Support Converting Colors with the new Membership Option!

The pro membership hides all ads, plus gives you double the colors in the color bucket, and more awesome pro features!

[Learn more, Memberships starting at \\$2.50/m!](#)

**Follow me
on Twitter!**

@ConvertingColor