

Converting Colors

Hex(D7B9A4)

Have a look what the booklet for
Hex(D7B9A4) contains.

Hex(D7B9A4)	3
<i>Conversions</i>	4
<i>Details</i>	6
<i>Harmonies</i>	11
<i>Previews</i>	23
<i>Color Blindness Simulation</i>	26
<i>CSS Examples</i>	29

Color

Hex(D7B9A4)

Conversions

Conversions Part 1

Format	Color
Hex	D7B9A4
RGB	215, 185, 164
RGB Percent	84%, 73%, 64%
CMY	0.1569, 0.2745, 0.3569
CMYK	0.00, 0.14, 0.24, 0.16
HSL	25°, 39%, 74%
HSV	25°, 24%, 84%
XYZ	52.0741, 51.8253, 42.3806
YIQ	191.5760, 24.6210, -0.1710

Conversions

Conversions Part 2

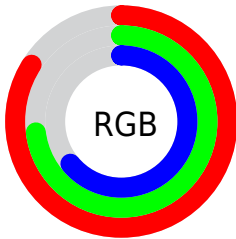
Format	Color
R _Y B	215, 200, 164
Decimal	14137764
CIE Lab	77.18, 7.51, 14.62
CIE LCh	77, 16.438, 62.811
Yxy	51.8253, 0.3560, 0.3543
Android (android.graphics.Color)	4292327844 (0xFFD7B9A4)
YUV	191.5760, -13.5950, 20.5428
Hunter-Lab	71.9898, 3.1365, 15.4886

Details

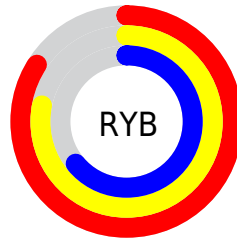
The Hex color **D7B9A4** is a light color, and the websafe version is hex **FFCCCC**. A complement of this color would be **A4C2D7**, and the grayscale version is **C0C0C0**.

A 20% lighter version of the original color is **FFF1DB**, and **A08470** is the 20% darker color. If you saturate the color by 10%, you get **D7AC8F**, and if you desaturate by 10%, it is **D7C6BA**.

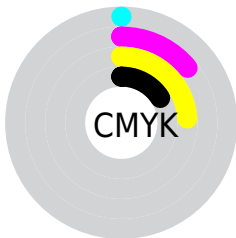
Distribution



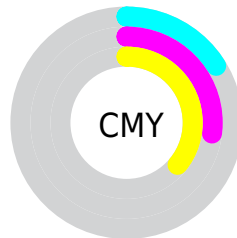
- Red (84%)
- Green (73%)
- Blue (64%)



- Red (84%)
- Yellow (78%)
- Blue (64%)



- Cyan (0%)
- Magenta (14%)
- Yellow (24%)
- Black (16%)



- Cyan (16%)
- Magenta (27%)
- Yellow (36%)

Brightness & Saturation Gradients

These gradients show how the Hex color D7B9A4 changes by changing the brightness by 10 percent. The first figure shows a shift by +10% for each color and the second figure -10%.

Similar to the brightness gradients but the following saturation gradients show a change of the Hex color D7B9A4 by changing the saturation by 10% instead.

 D7B9A4

 D7B9A4

FFFFFF

 BB9E8A

 FFF1DB

 A08470

 FFFFF7

 856B58

 6B5340

 523C2A

 3A2616

 251100

 000000

 D7B9A4

 D7B9A4

 D7AC8F

 D7C6BA

 D7A079

 D7D2CF

 D79364

 D7DFE5

 D7864E

 D7ECFA

 D77A39

 D7F8FF

 D76D23

 D7FFFF

 D7600E

 D75900

Harmonies

Analogous

The Analogous color harmony consists of three colors that are next to each other on the color wheel.



DEB5AF



D7B9A4



C9BEA0

Triad

The Triadic color harmony groups three colors that are evenly spaced from another and form a triangle on the color wheel.



D7B9A4



9BC8BF



C3BAD8

Complementary

The Complementary color scheme is a pair of colors which are on the opposite of each other on the color wheel.



D7B9A4



A4C2D7

Split Complementary

Split-complementary colors differ from the complementary color scheme. The scheme consists of three colors, the original color and two neighbors of the complement color.



B0BFDD



D7B9A4



97C7CE

Square

The Square scheme is like the rectangle color scheme, but the four colors are evenly spaced on the color wheel.



D7B9A4



A7C6B0



9FC4D9



D4B6CD

Rectangle

The Rectangle color scheme consists of four colors that form a rectangle on the color wheel.



D7B9A4



BEC1A2



9FC4D9



BDBCDA

Sweetspot

The Sweet Spot groups the original color and five complimentary colors.



D7B9A4



FFF4ED



D7A4C3



807A75



000000



808080

Same Dimension

The Same Dimension uses a secret algorithm to generate beautiful new colors.



D7B9A4



FFD5B8



D7D2A4



6B6560



AB4600



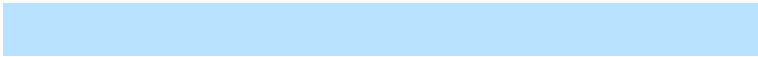
2B1200

Inverse Universe

The Inverse Universe completely reimagines the original color for something new.



A4C2D7



B8E2FF



A4A9D7



60676B



0065AB



001A2B

Previews

White Background



This preview shows how the Hex color D7B9A4 looks on a white background.

Color Contrast Check

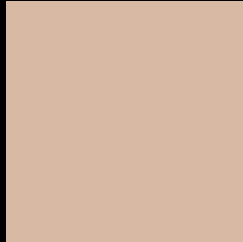
Large Text (above 18pt) WCAG AA × Fail

Any Text WCAG AA × Fail

Large Text (above 18pt) WCAG AAA × Fail

Any Text WCAG AAA × Fail

Black Background



This preview shows how the Hex color D7B9A4 looks on a black background.

Color Contrast Check

Large Text (above 18pt) WCAG AA ✓ Pass

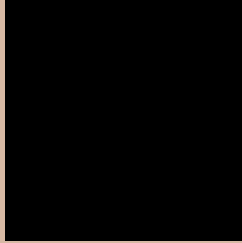
Any Text WCAG AA ✓ Pass

Large Text (above 18pt) WCAG AAA ✓ Pass

Any Text WCAG AAA ✓ Pass

If you want to check with other color combinations, try the [Color Contrast Checker](#).

Hex D7B9A4 Background



This preview shows how black text looks on a background with the Hex color D7B9A4.



This preview shows how white text looks on a background with the Hex color D7B9A4.

Color Blindness Simulation

Color vision deficiency is a very complex topic, and I could not describe the different causes any better than Wikipedia does, so if you want to learn more, you should check out their [article about color blindness](#).

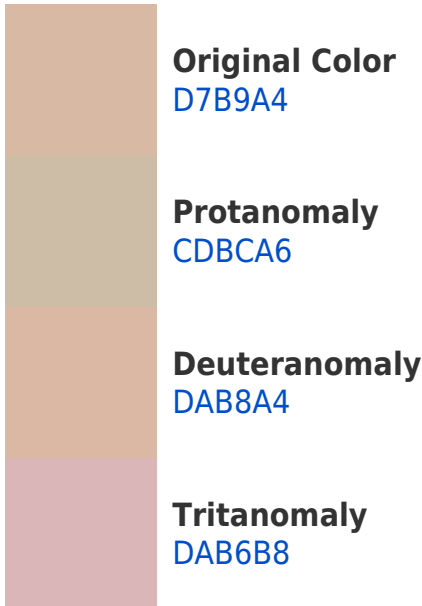
Dichromacy





Tritanopia
DBB5C3

Trichromacy



Monochromacy



CSS Examples

Text

The CSS property to change the color of the text to Hex D7B9A4 is called "color". The color property can be set on classes, ids or directly on the HTML element.

This example shows how text in the color #D7B9A4 looks like.

```
.text, #text, p{  
    color:#D7B9A4  
}
```

If you want to add a text shadow in that color use the text-shadow property, you can generate a text shadow directly with our [CSS Text Shadow Generator](#).

Here you see how black text with a 4 pixel #D7B9A4 colored shadow looks like.

```
.shadow{ text-shadow: 4px 4px 2px #D7B9A4
}
```

Border

The CSS property to change the border of an element to Hex D7B9A4 is called "border". The border property can be set on classes, ids or directly on the HTML element.

This example shows the color as border, it can be applied via the CSS property "border" or "border-color".

```
.border, #border, table{ border:4px solid
#D7B9A4 }
```

If only the border color should be changed use the property `border-color`.

```
.border{ border-color:#D7B9A4 }
```

If you want to add a box shadow in that color use:

Here you see how a box with a 4 pixel #D7B9A4 colored shadow looks like.

```
.boxshadow{ -moz-box-shadow:4px 4px 4px  
4px #D7B9A4; -webkit-box-shadow:4px 4px  
4px 4px #D7B9A4; box-shadow:4px 4px 4px  
4px #D7B9A4 }
```

Background

The CSS property to change the background color of an element to Hex D7B9A4 is called "background". The background property can be set on classes, ids or directly on the HTML element.

```
.background, #background, body{  
background:#D7B9A4 }
```

If only the background color should be changed can be used:

```
.background{ background-color:#D7B9A4 }
```

This example shows the color as background, it is applied via the CSS property "background".

To optimize and compress your CSS code, you can use our [online CSS compressor and optimizer](#) based on csstidy. If you want to create a linear or radial gradient as background or border, check our [CSS Gradient Generator](#).

Hey! You found this booklet interesting? Support Converting Colors with the new Membership Option!

The pro membership hides all ads, plus gives you double the colors in the color bucket, and more awesome pro features!

[Learn more, Memberships starting at \\$2.50/m!](#)

**Follow me
on Twitter!**

@ConvertingColor