

Converting Colors

Hex(D7B9AC)

Have a look what the booklet for
Hex(D7B9AC) contains.

Hex(D7B9AC)	3
<i>Conversions</i>	4
<i>Details</i>	6
<i>Harmonies</i>	11
<i>Previews</i>	23
<i>Color Blindness Simulation</i>	26
<i>CSS Examples</i>	29

Color

Hex(D7B9AC)

Conversions

Conversions Part 1

Format	Color
Hex	D7B9AC
RGB	215, 185, 172
RGB Percent	84%, 73%, 67%
CMY	0.1569, 0.2745, 0.3255
CMYK	0.00, 0.14, 0.20, 0.16
HSL	18°, 35%, 76%
HSV	18°, 20%, 84%
XYZ	52.8197, 52.1236, 46.3067
YIQ	192.4880, 22.0530, 2.3170

Conversions

Conversions Part 2

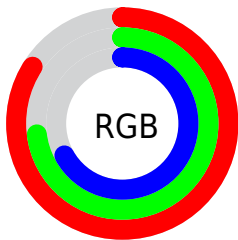
Format	Color
RYB	215, 191, 172
Decimal	14137772
CIELab	77.35, 8.69, 10.55
CIELCh	77, 13.668, 50.544
Yxy	52.1236, 0.3492, 0.3446
Android (android.graphics.Color)	4292327852 (0xFFD7B9AC)
YUV	192.4880, -10.1006, 19.7430
Hunter-Lab	72.1966, 4.2480, 12.5092

Details

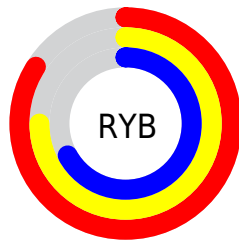
The Hex color **D7B9AC** is a light color, and the websafe version is hex **FFCCCC**. A complement of this color would be **ACCAD7**, and the grayscale version is **C1C1C1**.

A 20% lighter version of the original color is **FFF1E3**, and **A08478** is the 20% darker color. If you saturate the color by 10%, you get **D7AA97**, and if you desaturate by 10%, it is **D7C8C2**.

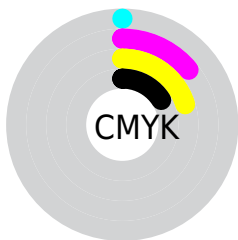
Distribution



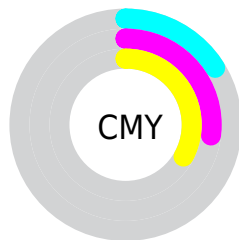
- Red (84%)
- Green (73%)
- Blue (67%)



- Red (84%)
- Yellow (75%)
- Blue (67%)



- Cyan (0%)
- Magenta (14%)
- Yellow (20%)
- Black (16%)



- Cyan (16%)
- Magenta (27%)
- Yellow (33%)

Brightness & Saturation Gradients

These gradients show how the Hex color D7B9AC changes by changing the brightness by 10 percent. The first figure shows a shift by +10% for each color and the second figure -10%.

Similar to the brightness gradients but the following saturation gradients show a change of the Hex color D7B9AC by changing the saturation by 10% instead.

 D7B9AC

FFFFFF

 FFF1E3

 D7B9AC

 BB9E91

 A08478

 856B5F

 6C5247

 533B31

 3B261C

 261102

 000000

 D7B9AC

 D7B9AC

 D7AA97

 D7C8C2

 D79B81

 D7D7D7

 D78C6C

 D7E6ED

 D77D56

 D7F5FF

 D76E41

 D7FFFF

 D75F2B

 D75015

 D74100

Harmonies

Analogous

The Analogous color harmony consists of three colors that are next to each other on the color wheel.



DAB7B7



D7B9AC



CDBDA6

Triad

The Triadic color harmony groups three colors that are evenly spaced from another and form a triangle on the color wheel.



D7B9AC



A5C6BA



BDBDD7

Complementary

The Complementary color scheme is a pair of colors which are on the opposite of each other on the color wheel.



D7B9AC



ACCAD7

Split Complementary

Split-complementary colors differ from the complementary color scheme. The scheme consists of three colors, the original color and two neighbors of the complement color.



ADC1D8



D7B9AC



9FC6C7

Square

The Square scheme is like the rectangle color scheme, but the four colors are evenly spaced on the color wheel.



D7B9AC



B1C4AF



A2C5D2



CCB9CF

Rectangle

The Rectangle color scheme consists of four colors that form a rectangle on the color wheel.



D7B9AC



C5C0A6



A2C5D2



B7BFD8

Sweetspot

The Sweet Spot groups the original color and five complimentary colors.



D7B9AC



FFF4F0



D7ACCA



807977



000000



808080

Same Dimension

The Same Dimension uses a secret algorithm to generate beautiful new colors.



D7B9AC



FFD4C2



D7CEAC



6B6460



AB3400



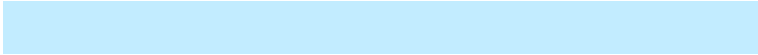
2B0D00

Inverse Universe

The Inverse Universe completely reimagines the original color for something new.



ACCAD7



C2ECFF



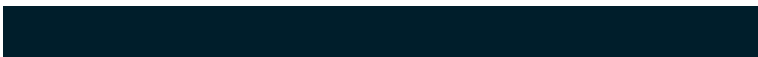
ACB5D7



60686B



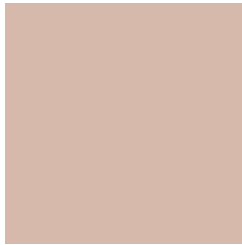
0077AB



001E2B

Previews

White Background



This preview shows how the Hex color D7B9AC looks on a white background.

Color Contrast Check

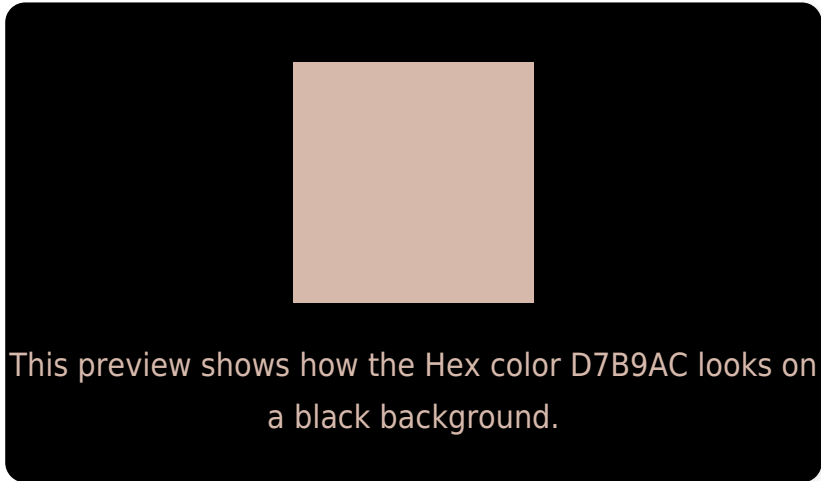
Large Text (above 18pt) WCAG AA × Fail

Any Text WCAG AA × Fail

Large Text (above 18pt) WCAG AAA × Fail

Any Text WCAG AAA × Fail

Black Background



Color Contrast Check

Large Text (above 18pt) WCAG AA ✓ Pass

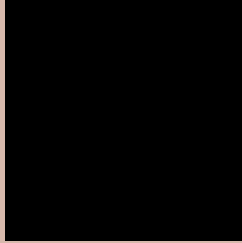
Any Text WCAG AA ✓ Pass

Large Text (above 18pt) WCAG AAA ✓ Pass

Any Text WCAG AAA ✓ Pass

If you want to check with other color combinations, try the [Color Contrast Checker](#).

Hex D7B9AC Background



This preview shows how black text looks on a background with the Hex color D7B9AC.

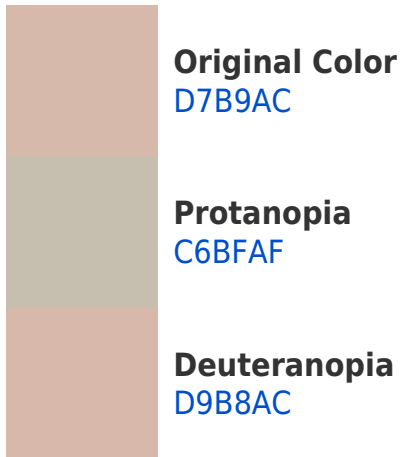


This preview shows how white text looks on a background with the Hex color D7B9AC.

Color Blindness Simulation

Color vision deficiency is a very complex topic, and I could not describe the different causes any better than Wikipedia does, so if you want to learn more, you should check out their [article about color blindness](#).

Dichromacy





Tritanopia
DAB5C4

Trichromacy



Original Color
D7B9AC

Protanomaly
CCBDAE

Deuteranomaly
D8B8AC

Tritanomaly
D9B6BB

Monochromacy



Original Color
D7B9AC

Achromatopsia
C0C0C0

Achromatomaly
C8BDB9

CSS Examples

Text

The CSS property to change the color of the text to Hex D7B9AC is called "color". The color property can be set on classes, ids or directly on the HTML element.

This example shows how text in the color #D7B9AC looks like.

```
.text, #text, p{  
    color:#D7B9AC  
}
```

If you want to add a text shadow in that color use the text-shadow property, you can generate a text shadow directly with our [CSS Text Shadow Generator](#).

Here you see how black text with a 4 pixel #D7B9AC colored shadow looks like.

```
.shadow{ text-shadow: 4px 4px 2px #D7B9AC
}
```

Border

The CSS property to change the border of an element to Hex D7B9AC is called "border". The border property can be set on classes, ids or directly on the HTML element.

This example shows the color as border, it can be applied via the CSS property "border" or "border-color".

```
.border, #border, table{ border:4px solid
#D7B9AC }
```

If only the border color should be changed use the property `border-color`.

```
.border{ border-color:#D7B9AC }
```

If you want to add a box shadow in that color use:

Here you see how a box with a 4 pixel #D7B9AC colored shadow looks like.

```
.boxshadow{ -moz-box-shadow:4px 4px 4px  
4px #D7B9AC; -webkit-box-shadow:4px 4px  
4px 4px #D7B9AC; box-shadow:4px 4px 4px  
4px #D7B9AC }
```

Background

The CSS property to change the background color of an element to Hex D7B9AC is called "background". The background property can be set on classes, ids or directly on the HTML element.

```
.background, #background, body{  
background:#D7B9AC }
```

If only the background color should be changed can be used:

```
.background{ background-color:#D7B9AC }
```

This example shows the color as background, it is applied via the CSS property "background".

To optimize and compress your CSS code, you can use our [online CSS compressor and optimizer](#) based on csstidy. If you want to create a linear or radial gradient as background or border, check our [CSS Gradient Generator](#).

Hey! You found this booklet interesting? Support Converting Colors with the new Membership Option!

The pro membership hides all ads, plus gives you double the colors in the color bucket, and more awesome pro features!

[Learn more, Memberships starting at \\$2.50/m!](#)

**Follow me
on Twitter!**

@ConvertingColor