

# Converting Colors

Hex(D7B9B8)

Have a look what the booklet for  
Hex(D7B9B8) contains.

|  |    |
|--|----|
| <b>Hex(D7B9B8)</b> .....                       | 3  |
| <i><b>Conversions</b></i> .....                | 4  |
| <i><b>Details</b></i> .....                    | 6  |
| <i><b>Harmonies</b></i> .....                  | 11 |
| <i><b>Previews</b></i> .....                   | 23 |
| <i><b>Color Blindness Simulation</b></i> ..... | 26 |
| <i><b>CSS Examples</b></i> .....               | 29 |

# **Color**

**Hex(D7B9B8)**

# Conversions

## Conversions Part 1

| Format      | Color                     |
|-------------|---------------------------|
| Hex         | D7B9B8                    |
| RGB         | 215, 185, 184             |
| RGB Percent | 84%, 73%, 72%             |
| CMY         | 0.1569, 0.2745, 0.2784    |
| CMYK        | 0.00, 0.14, 0.14, 0.16    |
| HSL         | 2°, 28%, 78%              |
| HSV         | 2°, 14%, 84%              |
| XYZ         | 54.0250, 52.6057, 52.6539 |
| YIQ         | 193.8560, 18.2010, 6.0490 |

# Conversions

## Conversions Part 2

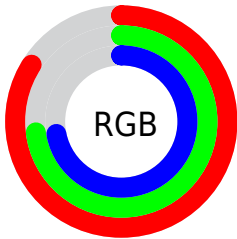
| <b>Format</b>                       | <b>Color</b>                  |
|-------------------------------------|-------------------------------|
| R <sub>Y</sub> B                    | 215, 185, 184                 |
| Decimal                             | 14137784                      |
| CIE Lab                             | 77.64, 10.55, 4.47            |
| CIE LCh                             | 78, 11.459, 22.948            |
| Yxy                                 | 52.6057, 0.3392,<br>0.3303    |
| Android<br>(android.graphics.Color) | 4292327864<br>(0xFFD7B9B8)    |
| YUV                                 | 193.8560, -4.8590,<br>18.5433 |
| Hunter-Lab                          | 72.5298, 6.0316,<br>7.7285    |

# Details

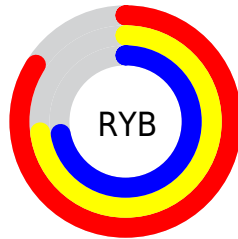
The Hex color **D7B9B8** is a light color, and the websafe version is hex **FFCCCC**. A complement of this color would be **B8D6D7**, and the grayscale version is **C2C2C2**.

A 20% lighter version of the original color is **FFF1F0**, and **A08483** is the 20% darker color. If you saturate the color by 10%, you get **D7A4A3**, and if you desaturate by 10%, it is **D7CECE**.

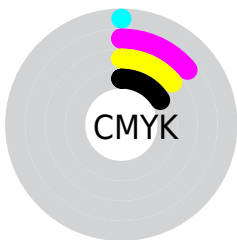
# Distribution



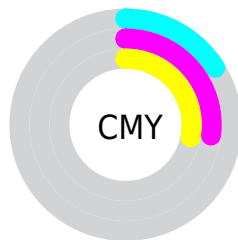
- Red (84%)
- Green (73%)
- Blue (72%)



- Red (84%)
- Yellow (73%)
- Blue (72%)



- Cyan (0%)
- Magenta (14%)
- Yellow (14%)
- Black (16%)



- Cyan (16%)
- Magenta (27%)
- Yellow (28%)

# Brightness & Saturation Gradients

These gradients show how the Hex color D7B9B8 changes by changing the brightness by 10 percent. The first figure shows a shift by +10% for each color and the second figure -10%.

Similar to the brightness gradients but the following saturation gradients show a change of the Hex color D7B9B8 by changing the saturation by 10% instead.



 D7B9B8

 D7B9B8

FFFFFF

 BB9E9D

 FFF1F0

 A08483

 866B6A

 6C5252

 533B3B

 3C2525

 261110

 010000

 000000

 D7B9B8

 D7B9B8

 D7A4A3

 D7CECE

 D78F8D

 D7E3E3

 D77B77

 D7F7F9

 D76662

 D7FFFF

 D7514D

 D73C37

 D72721

 D7130C

 D70700

# Harmonies

## Analogous

The Analogous color harmony consists of three colors that are next to each other on the color wheel.



D4B9C3



D7B9B8



D4BBAF

# Triad

The Triadic color harmony groups three colors that are evenly spaced from another and form a triangle on the color wheel.



D7B9B8



B3C5B3



B2C2D5

# Complementary

The Complementary color scheme is a pair of colors which are on the opposite of each other on the color wheel.



D7B9B8



B8D6D7

# Split Complementary

Split-complementary colors differ from the complementary color scheme. The scheme consists of three colors, the original color and two neighbors of the complement color.



A8C4D0



D7B9B8



AAC6BD

# Square

The Square scheme is like the rectangle color scheme, but the four colors are evenly spaced on the color wheel.



D7B9B8



C0C2AC



A5C6C8



BFBED3

# Rectangle

The Rectangle color scheme consists of four colors that form a rectangle on the color wheel.



D7B9B8



CFBDAC



A5C6C8



AEC3D4

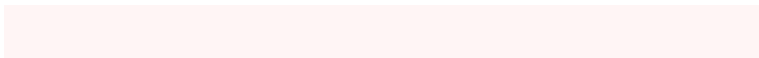


# Sweetspot

The Sweet Spot groups the original color and five complimentary colors.



D7B9B8



FFF5F5



D7B8D6



807979



000000



808080



# Same Dimension

The Same Dimension uses a secret algorithm to generate beautiful new colors.



D7B9B8



FFD5D4



D7C8B8



6B6160



AB0600



2B0100

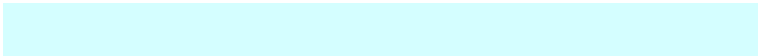


# Inverse Universe

The Inverse Universe completely reimagines the original color for something new.



B8D6D7



D4FEFF



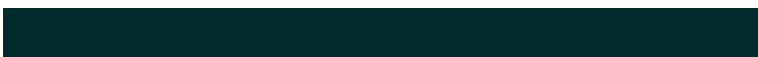
B8C7D7



606B6B



00A5AB

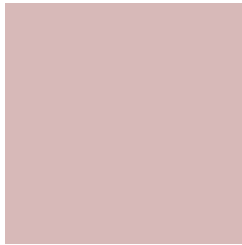


002A2B



# Previews

## White Background



This preview shows how the Hex color D7B9B8 looks on a white background.

## Color Contrast Check

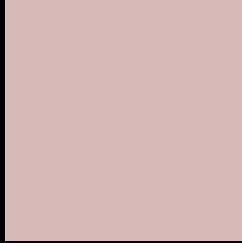
Large Text (above 18pt) WCAG AA × Fail

Any Text WCAG AA × Fail

Large Text (above 18pt) WCAG AAA × Fail

Any Text WCAG AAA × Fail

# Black Background



This preview shows how the Hex color D7B9B8 looks on a black background.

## Color Contrast Check

Large Text (above 18pt) WCAG AA ✓ Pass

Any Text WCAG AA ✓ Pass

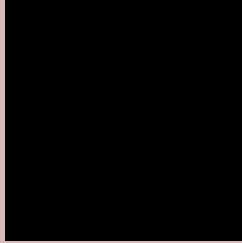
Large Text (above 18pt) WCAG AAA ✓ Pass

Any Text WCAG AAA ✓ Pass

If you want to check with other color combinations, try the [Color Contrast Checker](#).



## Hex D7B9B8 Background



This preview shows how black text looks on a background with the Hex color D7B9B8.

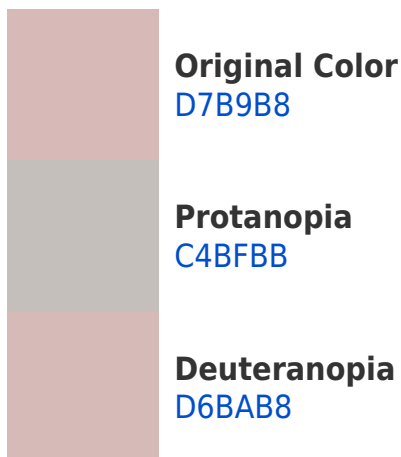


This preview shows how white text looks on a background with the Hex color D7B9B8.

# Color Blindness Simulation

Color vision deficiency is a very complex topic, and I could not describe the different causes any better than Wikipedia does, so if you want to learn more, you should check out their [article about color blindness](#).

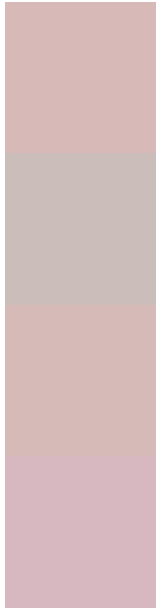
## Dichromacy





**Tritanopia**  
D9B7C5

# Trichromacy



**Original Color**  
D7B9B8

**Protanomaly**  
CBBDBA

**Deuteranomaly**  
D6BAB8

**Tritanomaly**  
D8B8C0

# Monochromacy



**Original Color**  
D7B9B8

**Achromatopsia**  
C2C2C2

**Achromatomaly**  
CABFBE

# CSS Examples

## Text

The CSS property to change the color of the text to Hex D7B9B8 is called "color". The color property can be set on classes, ids or directly on the HTML element.

This example shows how text in the color #D7B9B8 looks like.

```
.text, #text, p{  
    color:#D7B9B8  
}
```

If you want to add a text shadow in that color use the text-shadow property, you can generate a text shadow directly with our [CSS Text Shadow Generator](#).

Here you see how black text with a 4 pixel #D7B9B8 colored shadow looks like.

```
.shadow{ text-shadow: 4px 4px 2px #D7B9B8
}
```

## Border

The CSS property to change the border of an element to Hex D7B9B8 is called "border". The border property can be set on classes, ids or directly on the HTML element.

This example shows the color as border, it can be applied via the CSS property "border" or "border-color".

```
.border, #border, table{ border:4px solid
#D7B9B8 }
```

If only the border color should be changed use the property `border-color`.

```
.border{ border-color:#D7B9B8 }
```

If you want to add a box shadow in that color use:

Here you see how a box with a 4 pixel #D7B9B8 colored shadow looks like.

```
.boxshadow{ -moz-box-shadow:4px 4px 4px  
4px #D7B9B8; -webkit-box-shadow:4px 4px  
4px 4px #D7B9B8; box-shadow:4px 4px 4px  
4px #D7B9B8 }
```

# Background

The CSS property to change the background color of an element to Hex D7B9B8 is called "background". The background property can be set on classes, ids or directly on the HTML element.

```
.background, #background, body{  
background:#D7B9B8 }
```

If only the background color should be changed can be used:

```
.background{ background-color:#D7B9B8 }
```

This example shows the color as background, it is applied via the CSS property "background".

To optimize and compress your CSS code, you can use our [online CSS compressor and optimizer](#) based on csstidy. If you want to create a linear or radial gradient as background or border, check our [CSS Gradient Generator](#).



Hey! You found this booklet interesting? Support Converting Colors with the new Membership Option!

The pro membership hides all ads, plus gives you double the colors in the color bucket, and more awesome pro features!

**[Learn more, Memberships starting at \\$2.50/m!](#)**

**Follow me  
on Twitter!**

@ConvertingColor