

Converting Colors

Hex(D7B9BC)

Have a look what the booklet for
Hex(D7B9BC) contains.

Hex(D7B9BC)	3
<i>Conversions</i>	4
<i>Details</i>	6
<i>Harmonies</i>	11
<i>Previews</i>	23
<i>Color Blindness Simulation</i>	26
<i>CSS Examples</i>	29

Color

Hex(D7B9BC)

Conversions

Conversions Part 1

Format	Color
Hex	D7B9BC
RGB	215, 185, 188
RGB Percent	84%, 73%, 74%
CMY	0.1569, 0.2745, 0.2627
CMYK	0.00, 0.14, 0.13, 0.16
HSL	354°, 27%, 78%
HSV	354°, 14%, 84%
XYZ	54.4504, 52.7758, 54.8939
YIQ	194.3120, 16.9170, 7.2930

Conversions

Conversions Part 2

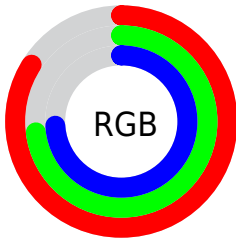
Format	Color
R _Y B	215, 185, 188
Decimal	14137788
CIE Lab	77.74, 11.20, 2.45
CIE LCh	78, 11.466, 12.320
Yxy	52.7758, 0.3359, 0.3255
Android (android.graphics.Color)	4292327868 (0xFFD7B9BC)
YUV	194.3120, -3.1118, 18.1434
Hunter-Lab	72.6470, 6.6572, 6.0519

Details

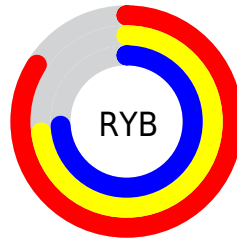
The Hex color **D7B9BC** is a light color, and the websafe version is hex **FFCCCC**. A complement of this color would be **B9D7D4**, and the grayscale version is **C2C2C2**.

A 20% lighter version of the original color is **FFF1F4**, and **A08487** is the 20% darker color. If you saturate the color by 10%, you get **D7A4A9**, and if you desaturate by 10%, it is **D7CFCF**.

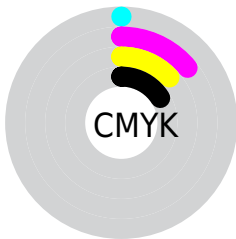
Distribution



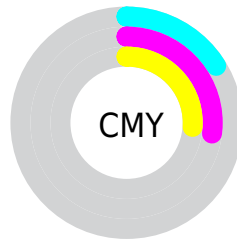
- Red (84%)
- Green (73%)
- Blue (74%)



- Red (84%)
- Yellow (73%)
- Blue (74%)



- Cyan (0%)
- Magenta (14%)
- Yellow (13%)
- Black (16%)



- Cyan (16%)
- Magenta (27%)
- Yellow (26%)

Brightness & Saturation Gradients

These gradients show how the Hex color D7B9BC changes by changing the brightness by 10 percent. The first figure shows a shift by +10% for each color and the second figure -10%.

Similar to the brightness gradients but the following saturation gradients show a change of the Hex color D7B9BC by changing the saturation by 10% instead.

 D7B9BC

FFFFFF

 FFF1F4

 D7B9BC

 BB9EA1

 A08487

 866B6E

 6C5255

 543B3E

 3C2528

 261114

 040000

 000000

 D7B9BC

 D7B9BC

 D7A4A9

 D7CFCF

 D78E95

 D7E4E3

 D77882

 D7FAF6

 D7636F

 D7FFFF

 D74E5B

 D73848

 D72235

 D70D21

 D70016

Harmonies

Analogous

The Analogous color harmony consists of three colors that are next to each other on the color wheel.



D2BAC7



D7B9BC



D6BAB2

Triad

The Triadic color harmony groups three colors that are evenly spaced from another and form a triangle on the color wheel.



D7B9BC



B8C4B0



AEC3D4

Complementary

The Complementary color scheme is a pair of colors which are on the opposite of each other on the color wheel.



D7B9BC



B9D7D4

Split Complementary

Split-complementary colors differ from the complementary color scheme. The scheme consists of three colors, the original color and two neighbors of the complement color.



A7C5CE



D7B9BC



ADC6B9

Square

The Square scheme is like the rectangle color scheme, but the four colors are evenly spaced on the color wheel.



D7B9BC



C4C1AB



A6C7C4



BAC0D5

Rectangle

The Rectangle color scheme consists of four colors that form a rectangle on the color wheel.



D7B9BC



D2BCAE



A6C7C4



ABC4D3

Sweetspot

The Sweet Spot groups the original color and five complimentary colors.



D7B9BC



FFF5F6



D4B9D7



80797A



000000



808080

Same Dimension

The Same Dimension uses a secret algorithm to generate beautiful new colors.



D7B9BC



FFD4D8



D7C5B9



6B6061



AB0011



2B0004

Inverse Universe

The Inverse Universe completely reimagines the original color for something new.



D7B9BC



FFD4D8



B9CBD7



6B6061



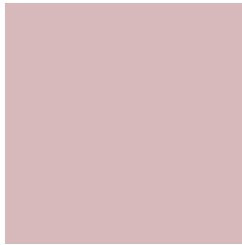
AB0011



2B0004

Previews

White Background



This preview shows how the Hex color D7B9BC looks on a white background.

Color Contrast Check

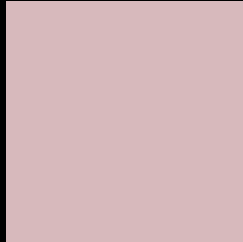
Large Text (above 18pt) WCAG AA × Fail

Any Text WCAG AA × Fail

Large Text (above 18pt) WCAG AAA × Fail

Any Text WCAG AAA × Fail

Black Background



This preview shows how the Hex color D7B9BC looks on a black background.

Color Contrast Check

Large Text (above 18pt) WCAG AA ✓ Pass

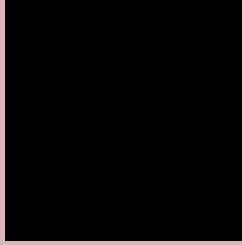
Any Text WCAG AA ✓ Pass

Large Text (above 18pt) WCAG AAA ✓ Pass

Any Text WCAG AAA ✓ Pass

If you want to check with other color combinations, try the [Color Contrast Checker](#).

Hex D7B9BC Background



This preview shows how black text looks on a background with the Hex color D7B9BC.



This preview shows how white text looks on a background with the Hex color D7B9BC.

Color Blindness Simulation

Color vision deficiency is a very complex topic, and I could not describe the different causes any better than Wikipedia does, so if you want to learn more, you should check out their [article about color blindness](#).

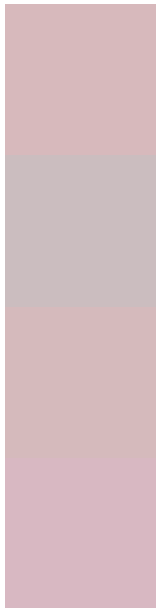
Dichromacy





Tritanopia
D8B7C6

Trichromacy



Original Color
D7B9BC

Protanomaly
CBBDBF

Deuteranomaly
D5BABC

Tritanomaly
D8B8C2

Monochromacy



Original Color
D7B9BC

Achromatopsia
C2C2C2

Achromatomaly
CABFC0

CSS Examples

Text

The CSS property to change the color of the text to Hex D7B9BC is called "color". The color property can be set on classes, ids or directly on the HTML element.

This example shows how text in the color #D7B9BC looks like.

```
.text, #text, p{  
    color:#D7B9BC  
}
```

If you want to add a text shadow in that color use the text-shadow property, you can generate a text shadow directly with our [CSS Text Shadow Generator](#).

Here you see how black text with a 4 pixel #D7B9BC colored shadow looks like.

```
.shadow{ text-shadow: 4px 4px 2px #D7B9BC }  
}
```

Border

The CSS property to change the border of an element to Hex D7B9BC is called "border". The border property can be set on classes, ids or directly on the HTML element.

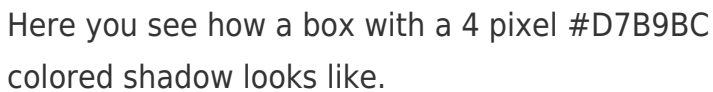
This example shows the color as border, it can be applied via the CSS property "border" or "border-color".

```
.border, #border, table{ border:4px solid #D7B9BC }  
}
```

If only the border color should be changed use the property `border-color`.

```
.border{ border-color:#D7B9BC }
```

If you want to add a box shadow in that color use:



Here you see how a box with a 4 pixel #D7B9BC colored shadow looks like.

```
.boxshadow{ -moz-box-shadow:4px 4px 4px  
4px #D7B9BC; -webkit-box-shadow:4px 4px  
4px 4px #D7B9BC; box-shadow:4px 4px 4px  
4px #D7B9BC }
```

Background

The CSS property to change the background color of an element to Hex D7B9BC is called "background". The background property can be set on classes, ids or directly on the HTML element.

```
.background, #background, body{  
background:#D7B9BC }
```

If only the background color should be changed can be used:

```
.background{ background-color:#D7B9BC }
```

This example shows the color as background, it is applied via the CSS property "background".

To optimize and compress your CSS code, you can use our [online CSS compressor and optimizer](#) based on csstidy. If you want to create a linear or radial gradient as background or border, check our [CSS Gradient Generator](#).

Hey! You found this booklet interesting? Support Converting Colors with the new Membership Option!

The pro membership hides all ads, plus gives you double the colors in the color bucket, and more awesome pro features!

[Learn more, Memberships starting at \\$2.50/m!](#)

**Follow me
on Twitter!**

@ConvertingColor