

Converting Colors

Hex(D7B9BF)

Have a look what the booklet for
Hex(D7B9BF) contains.

Hex(D7B9BF)	3
<i>Conversions</i>	4
<i>Details</i>	6
<i>Harmonies</i>	11
<i>Previews</i>	23
<i>Color Blindness Simulation</i>	26
<i>CSS Examples</i>	29

Color

Hex(D7B9BF)

Conversions

Conversions Part 1

Format	Color
Hex	D7B9BF
RGB	215, 185, 191
RGB Percent	84%, 73%, 75%
CMY	0.1569, 0.2745, 0.2510
CMYK	0.00, 0.14, 0.11, 0.16
HSL	348°, 27%, 78%
HSV	348°, 14%, 84%
XYZ	54.7773, 52.9066, 56.6151
YIQ	194.6540, 15.9540, 8.2260

Conversions

Conversions Part 2

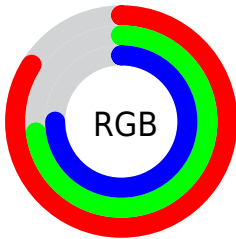
Format	Color
R _Y B	215, 185, 191
Decimal	14137791
CIE Lab	77.82, 11.70, 0.93
CIE LCh	78, 11.735, 4.561
Yxy	52.9066, 0.3334, 0.3220
Android (android.graphics.Color)	4292327871 (0xFFD7B9BF)
YUV	194.6540, -1.8014, 17.8434
Hunter-Lab	72.7369, 7.1365, 4.7672

Details

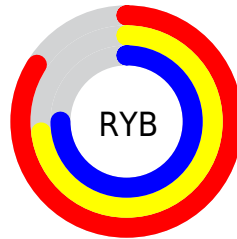
The Hex color **D7B9BF** is a light color, and the websafe version is hex **FFCCCC**. A complement of this color would be **B9D7D1**, and the grayscale version is **C3C3C3**.

A 20% lighter version of the original color is **FFF1F7**, and **A0848A** is the 20% darker color. If you saturate the color by 10%, you get **D7A4AE**, and if you desaturate by 10%, it is **D7CFD0**.

Distribution



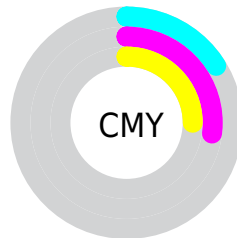
- Red (84%)
- Green (73%)
- Blue (75%)



- Red (84%)
- Yellow (73%)
- Blue (75%)



- Cyan (0%)
- Magenta (14%)
- Yellow (11%)
- Black (16%)



- Cyan (16%)
- Magenta (27%)
- Yellow (25%)

Brightness & Saturation Gradients

These gradients show how the Hex color D7B9BF changes by changing the brightness by 10 percent. The first figure shows a shift by +10% for each color and the second figure -10%.

Similar to the brightness gradients but the following saturation gradients show a change of the Hex color D7B9BF by changing the saturation by 10% instead.

 D7B9BF

 D7B9BF

FFFFFF

 BB9EA4

 FFF1F7

 A0848A

 866B70

 6C5258

 543B41

 3C252B

 261116

 060000

 000000

 D7B9BF

 D7B9BF

 D7A4AE

 D7CFD0

 D78E9D

 D7E4E1

 D7788B

 D7FAF3

 D7637A

 D7FFFF

 D74E69

 D73858

 D72247

 D70D35

 D7002B

Harmonies

Analogous

The Analogous color harmony consists of three colors that are next to each other on the color wheel.



D0BACA



D7B9BF



D7BAB4

Triad

The Triadic color harmony groups three colors that are evenly spaced from another and form a triangle on the color wheel.



D7B9BF



BBC3AE



ABC4D4

Complementary

The Complementary color scheme is a pair of colors which are on the opposite of each other on the color wheel.



D7B9BF



B9D7D1

Split Complementary

Split-complementary colors differ from the complementary color scheme. The scheme consists of three colors, the original color and two neighbors of the complement color.



A5C6CC



D7B9BF



AFC6B7

Square

The Square scheme is like the rectangle color scheme, but the four colors are evenly spaced on the color wheel.



D7B9BF



C8C0AB



A7C7C2



B7C1D6

Rectangle

The Rectangle color scheme consists of four colors that form a rectangle on the color wheel.



D7B9BF



D4BCAF



A7C7C2



A9C5D2

Sweetspot

The Sweet Spot groups the original color and five complimentary colors.



D7B9BF



FFF5F7



D1B9D7



80797A



000000



808080

Same Dimension

The Same Dimension uses a secret algorithm to generate beautiful new colors.



D7B9BF



FFD4DC



D7C2B9



6B6063



AB0022



2B0009

Inverse Universe

The Inverse Universe completely reimagines the original color for something new.



D7B9BF



FFD4DC



B9CED7



6B6063



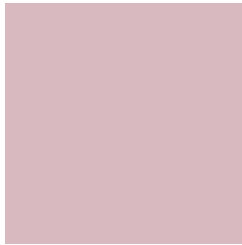
AB0022



2B0009

Previews

White Background



This preview shows how the Hex color D7B9BF looks on a white background.

Color Contrast Check

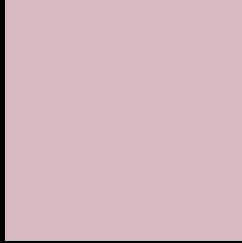
Large Text (above 18pt) WCAG AA × Fail

Any Text WCAG AA × Fail

Large Text (above 18pt) WCAG AAA × Fail

Any Text WCAG AAA × Fail

Black Background



This preview shows how the Hex color D7B9BF looks on a black background.

Color Contrast Check

Large Text (above 18pt) WCAG AA ✓ Pass

Any Text WCAG AA ✓ Pass

Large Text (above 18pt) WCAG AAA ✓ Pass

Any Text WCAG AAA ✓ Pass

If you want to check with other color combinations, try the [Color Contrast Checker](#).

Hex D7B9BF Background



This preview shows how black text looks on a background with the Hex color D7B9BF.

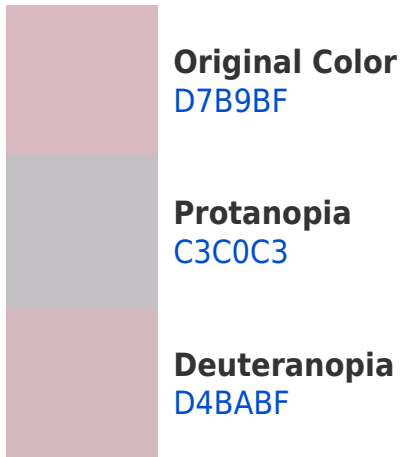


This preview shows how white text looks on a background with the Hex color D7B9BF.

Color Blindness Simulation

Color vision deficiency is a very complex topic, and I could not describe the different causes any better than Wikipedia does, so if you want to learn more, you should check out their [article about color blindness](#).

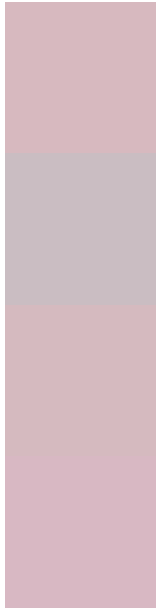
Dichromacy





Tritanopia
D8B8C6

Trichromacy



Original Color
D7B9BF

Protanomaly
CABDC2

Deuteranomaly
D5BABF

Tritanomaly
D8B8C3

Monochromacy



Original Color
D7B9BF

Achromatopsia
C3C3C3

Achromatomaly
CABFC2

CSS Examples

Text

The CSS property to change the color of the text to Hex D7B9BF is called "color". The color property can be set on classes, ids or directly on the HTML element.

This example shows how text in the color #D7B9BF looks like.

```
.text, #text, p{  
    color:#D7B9BF  
}
```

If you want to add a text shadow in that color use the text-shadow property, you can generate a text shadow directly with our [CSS Text Shadow Generator](#).

Here you see how black text with a 4 pixel #D7B9BF colored shadow looks like.

```
.shadow{ text-shadow: 4px 4px 2px #D7B9BF
}
```

Border

The CSS property to change the border of an element to Hex D7B9BF is called "border". The border property can be set on classes, ids or directly on the HTML element.

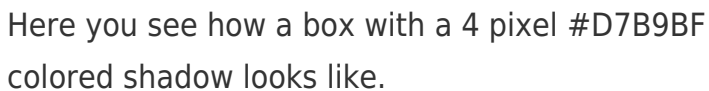
This example shows the color as border, it can be applied via the CSS property "border" or "border-color".

```
.border, #border, table{ border:4px solid
#D7B9BF }
```

If only the border color should be changed use the property `border-color`.

```
.border{ border-color:#D7B9BF }
```

If you want to add a box shadow in that color use:



Here you see how a box with a 4 pixel #D7B9BF colored shadow looks like.

```
.boxshadow{ -moz-box-shadow:4px 4px 4px  
4px #D7B9BF; -webkit-box-shadow:4px 4px  
4px 4px #D7B9BF; box-shadow:4px 4px 4px  
4px #D7B9BF }
```

Background

The CSS property to change the background color of an element to Hex D7B9BF is called "background". The background property can be set on classes, ids or directly on the HTML element.

```
.background, #background, body{  
background:#D7B9BF }
```

If only the background color should be changed can be used:

```
.background{ background-color:#D7B9BF }
```

This example shows the color as background, it is applied via the CSS property "background".

To optimize and compress your CSS code, you can use our [online CSS compressor and optimizer](#) based on csstidy. If you want to create a linear or radial gradient as background or border, check our [CSS Gradient Generator](#).

Hey! You found this booklet interesting? Support Converting Colors with the new Membership Option!

The pro membership hides all ads, plus gives you double the colors in the color bucket, and more awesome pro features!

[Learn more, Memberships starting at \\$2.50/m!](#)

**Follow me
on Twitter!**

@ConvertingColor