

Converting Colors

Hex(D7BB9E)

Have a look what the booklet for
Hex(D7BB9E) contains.

Hex(D7BB9E)	3
<i>Conversions</i>	4
<i>Details</i>	6
<i>Harmonies</i>	11
<i>Previews</i>	23
<i>Color Blindness Simulation</i>	26
<i>CSS Examples</i>	29

Color

Hex(D7BB9E)

Conversions

Conversions Part 1

Format	Color
Hex	D7BB9E
RGB	215, 187, 158
RGB Percent	84%, 73%, 62%
CMY	0.1569, 0.2667, 0.3804
CMYK	0.00, 0.13, 0.27, 0.16
HSL	31°, 42%, 73%
HSV	31°, 27%, 84%
XYZ	51.9662, 52.4563, 39.7339
YIQ	192.0660, 25.9970, -3.0830

Conversions

Conversions Part 2

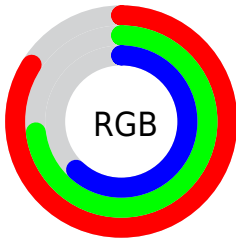
Format	Color
RYB	213, 215, 158
Decimal	14138270
CIELab	77.55, 5.60, 18.38
CIELCh	78, 19.213, 73.038
Yxy	52.4563, 0.3605, 0.3639
Android (android.graphics.Color)	4292328350 (0xFFD7BB9E)
YUV	192.0660, -16.7945, 20.1131
Hunter-Lab	72.4268, 1.3270, 18.1717

Details

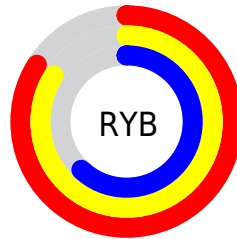
The Hex color **D7BB9E** is a light color, and the websafe version is hex **CCCC99**. A complement of this color would be **9EBAD7**, and the grayscale version is **C0C0C0**.

A 20% lighter version of the original color is **FFF3D5**, and **A0866B** is the 20% darker color. If you saturate the color by 10%, you get **D7B089**, and if you desaturate by 10%, it is **D7C6B4**.

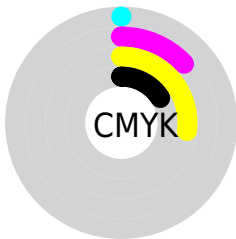
Distribution



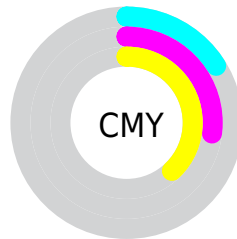
- Red (84%)
- Green (73%)
- Blue (62%)



- Red (84%)
- Yellow (84%)
- Blue (62%)



- Cyan (0%)
- Magenta (13%)
- Yellow (27%)
- Black (16%)



- Cyan (16%)
- Magenta (27%)
- Yellow (38%)

Brightness & Saturation Gradients

These gradients show how the Hex color D7BB9E changes by changing the brightness by 10 percent. The first figure shows a shift by +10% for each color and the second figure -10%.

Similar to the brightness gradients but the following saturation gradients show a change of the Hex color D7BB9E by changing the saturation by 10% instead.

 D7BB9E

 D7BB9E

FFFFFF

 BBA084

 FFF3D5

 A0866B

 FFFFFF1

 856D52

 6B543B

 523D25

 3A2810

 241300

 000000

 D7BB9E

 D7BB9E

 D7B089

 D7C6B4

 D7A673

 D7D0C9

 D79B5E

 D7DBDF

 D79148

 D7E5F4

 D78633

 D7F0FF

 D77C1D

 D7FAFF

 D77108

 D7FFFF

 D76D00

Harmonies

Analogous

The Analogous color harmony consists of three colors that are next to each other on the color wheel.



E2B6A8



D7BB9E



C5C19D

Triad

The Triadic color harmony groups three colors that are evenly spaced from another and form a triangle on the color wheel.



D7BB9E



92CAC7



CCB9DA

Complementary

The Complementary color scheme is a pair of colors which are on the opposite of each other on the color wheel.



D7BB9E



9EBAD7

Split Complementary

Split-complementary colors differ from the complementary color scheme. The scheme consists of three colors, the original color and two neighbors of the complement color.



B6BFE2



D7BB9E



92C8D7

Square

The Square scheme is like the rectangle color scheme, but the four colors are evenly spaced on the color wheel.



D7BB9E



9EC9B5



A0C4E1



DDB4CA

Rectangle

The Rectangle color scheme consists of four colors that form a rectangle on the color wheel.



D7BB9E



B8C4A2



A0C4E1



C5BADD

Sweetspot

The Sweet Spot groups the original color and five complimentary colors.



D7BB9E



FFF5EB



D79EBB



807973



000000



808080

Same Dimension

The Same Dimension uses a secret algorithm to generate beautiful new colors.



D7BB9E



FFD7AD



D7D79E



6B6660



AB5700



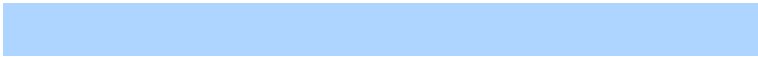
2B1600

Inverse Universe

The Inverse Universe completely reimagines the original color for something new.



9EBAD7



ADD5FF



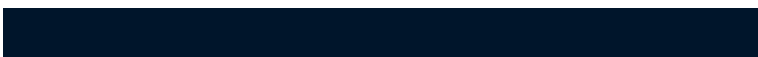
9E9ED7



60666B



0054AB



00152B

Previews

White Background



This preview shows how the Hex color D7BB9E looks on a white background.

Color Contrast Check

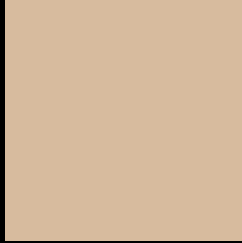
Large Text (above 18pt) WCAG AA × Fail

Any Text WCAG AA × Fail

Large Text (above 18pt) WCAG AAA × Fail

Any Text WCAG AAA × Fail

Black Background



This preview shows how the Hex color D7BB9E looks on a black background.

Color Contrast Check

Large Text (above 18pt) WCAG AA ✓ Pass

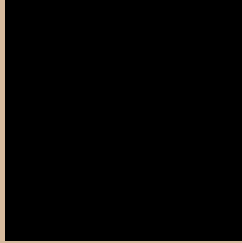
Any Text WCAG AA ✓ Pass

Large Text (above 18pt) WCAG AAA ✓ Pass

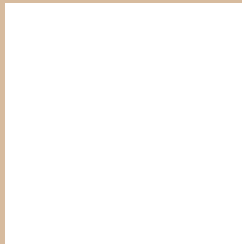
Any Text WCAG AAA ✓ Pass

If you want to check with other color combinations, try the [Color Contrast Checker](#).

Hex D7BB9E Background



This preview shows how black text looks on a background with the Hex color D7BB9E.



This preview shows how white text looks on a background with the Hex color D7BB9E.

Color Blindness Simulation

Color vision deficiency is a very complex topic, and I could not describe the different causes any better than Wikipedia does, so if you want to learn more, you should check out their [article about color blindness](#).

Dichromacy





Tritanopia
DBB6C4

Trichromacy



Monochromacy



CSS Examples

Text

The CSS property to change the color of the text to Hex D7BB9E is called "color". The color property can be set on classes, ids or directly on the HTML element.

This example shows how text in the color #D7BB9E looks like.

```
.text, #text, p{  
    color:#D7BB9E  
}
```

If you want to add a text shadow in that color use the text-shadow property, you can generate a text shadow directly with our [CSS Text Shadow Generator](#).

Here you see how black text with a 4 pixel #D7BB9E colored shadow looks like.

```
.shadow{ text-shadow: 4px 4px 2px #D7BB9E
}
```

Border

The CSS property to change the border of an element to Hex D7BB9E is called "border". The border property can be set on classes, ids or directly on the HTML element.

This example shows the color as border, it can be applied via the CSS property "border" or "border-color".

```
.border, #border, table{ border:4px solid
#D7BB9E }
```

If only the border color should be changed use the property `border-color`.

```
.border{ border-color:#D7BB9E }
```

If you want to add a box shadow in that color use:

Here you see how a box with a 4 pixel #D7BB9E colored shadow looks like.

```
.boxshadow{ -moz-box-shadow:4px 4px 4px  
4px #D7BB9E; -webkit-box-shadow:4px 4px  
4px 4px #D7BB9E; box-shadow:4px 4px 4px  
4px #D7BB9E }
```

Background

The CSS property to change the background color of an element to Hex D7BB9E is called "background". The background property can be set on classes, ids or directly on the HTML element.

```
.background, #background, body{  
background:#D7BB9E }
```

If only the background color should be changed can be used:

```
.background{ background-color:#D7BB9E }
```

This example shows the color as background, it is applied via the CSS property "background".

To optimize and compress your CSS code, you can use our [online CSS compressor and optimizer](#) based on csstidy. If you want to create a linear or radial gradient as background or border, check our [CSS Gradient Generator](#).

Hey! You found this booklet interesting? Support Converting Colors with the new Membership Option!

The pro membership hides all ads, plus gives you double the colors in the color bucket, and more awesome pro features!

[Learn more, Memberships starting at \\$2.50/m!](#)

**Follow me
on Twitter!**

@ConvertingColor