

Converting Colors

Hex(D7BBB3)

Have a look what the booklet for
Hex(D7BBB3) contains.

Hex(D7BBB3)	3
<i>Conversions</i>	4
<i>Details</i>	6
<i>Harmonies</i>	11
<i>Previews</i>	23
<i>Color Blindness Simulation</i>	26
<i>CSS Examples</i>	29

Color

Hex(D7BBB3)

Conversions

Conversions Part 1

Format	Color
Hex	D7BBB3
RGB	215, 187, 179
RGB Percent	84%, 73%, 70%
CMY	0.1569, 0.2667, 0.2980
CMYK	0.00, 0.13, 0.17, 0.16
HSL	13°, 31%, 77%
HSV	13°, 17%, 84%
XYZ	53.9313, 53.2424, 50.0821
YIQ	194.4600, 19.2560, 3.4480

Conversions

Conversions Part 2

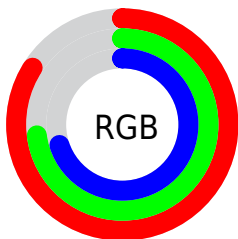
Format	Color
R _Y B	215, 189, 179
Decimal	14138291
CIE Lab	78.02, 8.69, 7.72
CIE LCh	78, 11.621, 41.597
Yxy	53.2424, 0.3430, 0.3386
Android (android.graphics.Color)	4292328371 (0xFFD7BBB3)
YUV	194.4600, -7.6218, 18.0136
Hunter-Lab	72.9674, 4.2392, 10.3827

Details

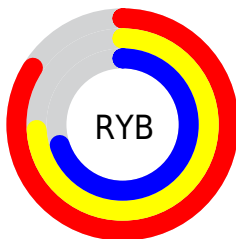
The Hex color **D7BBB3** is a light color, and the websafe version is hex **CCCCCC**. A complement of this color would be **B3CFD7**, and the grayscale version is **C3C3C3**.

A 20% lighter version of the original color is **FFF3EB**, and **A0867E** is the 20% darker color. If you saturate the color by 10%, you get **D7AA9E**, and if you desaturate by 10%, it is **D7CCC9**.

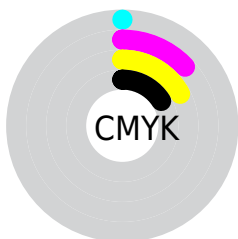
Distribution



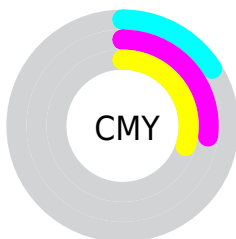
- Red (84%)
- Green (73%)
- Blue (70%)



- Red (84%)
- Yellow (74%)
- Blue (70%)



- Cyan (0%)
- Magenta (13%)
- Yellow (17%)
- Black (16%)



- Cyan (16%)
- Magenta (27%)
- Yellow (30%)

Brightness & Saturation Gradients

These gradients show how the Hex color D7BBB3 changes by changing the brightness by 10 percent. The first figure shows a shift by +10% for each color and the second figure -10%.

Similar to the brightness gradients but the following saturation gradients show a change of the Hex color D7BBB3 by changing the saturation by 10% instead.

 D7BBB3

FFFFFF

 FFF3EB

 D7BBB3

 BBA098

 A0867E

 856D65

 6C544D

 533D37

 3C2721

 26130B

 000000

 D7BBB3

 D7BBB3

 D7AA9E

 D7CCC9

 D79A88

 D7DCDE

 D78973

 D7EDF3

 D7785D

 D7FEFF

 D76747

 D7FFFF

 D75732

 D7461C

 D73507

 D73000

Harmonies

Analogous

The Analogous color harmony consists of three colors that are next to each other on the color wheel.



D8BABD



D7BBB3



D0BEAD

Triad

The Triadic color harmony groups three colors that are evenly spaced from another and form a triangle on the color wheel.



D7BBB3



AEC7BA



BBC0D6

Complementary

The Complementary color scheme is a pair of colors which are on the opposite of each other on the color wheel.



D7BBB3



B3CFD7

Split Complementary

Split-complementary colors differ from the complementary color scheme. The scheme consists of three colors, the original color and two neighbors of the complement color.



AEC4D5



D7BBB3



A7C7C5

Square

The Square scheme is like the rectangle color scheme, but the four colors are evenly spaced on the color wheel.



D7BBB3



B9C5B1



A7C6CF



C8BDD1

Rectangle

The Rectangle color scheme consists of four colors that form a rectangle on the color wheel.



D7BBB3



C9C0AB



A7C6CF



B6C2D6

Sweetspot

The Sweet Spot groups the original color and five complimentary colors.



D7BBB3



FFF5F2



D7B3CF



807A78



000000



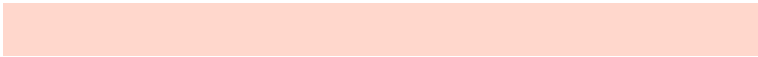
808080

Same Dimension

The Same Dimension uses a secret algorithm to generate beautiful new colors.



D7BBB3



FFD7CC



D7CDB3



6B6360



AB2600



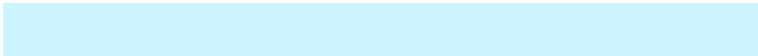
2B0A00

Inverse Universe

The Inverse Universe completely reimagines the original color for something new.



B3CFD7



CCF4FF



B3BDD7



60696B



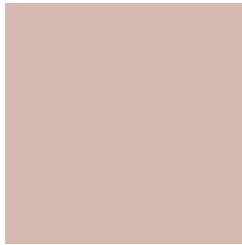
0085AB



00222B

Previews

White Background



This preview shows how the Hex color D7BBB3 looks on a white background.

Color Contrast Check

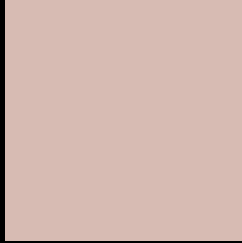
Large Text (above 18pt) WCAG AA × Fail

Any Text WCAG AA × Fail

Large Text (above 18pt) WCAG AAA × Fail

Any Text WCAG AAA × Fail

Black Background



This preview shows how the Hex color D7BBB3 looks on a black background.

Color Contrast Check

Large Text (above 18pt) WCAG AA ✓ Pass

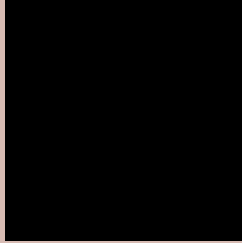
Any Text WCAG AA ✓ Pass

Large Text (above 18pt) WCAG AAA ✓ Pass

Any Text WCAG AAA ✓ Pass

If you want to check with other color combinations, try the [Color Contrast Checker](#).

Hex D7BBB3 Background



This preview shows how black text looks on a background with the Hex color D7BBB3.

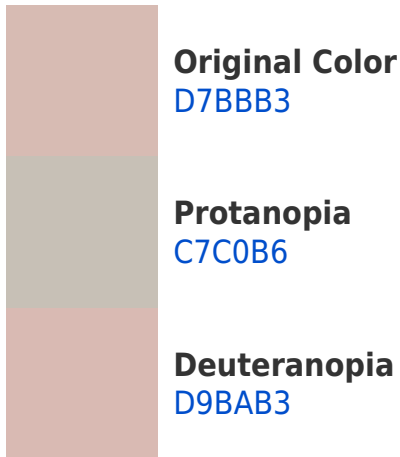


This preview shows how white text looks on a background with the Hex color D7BBB3.

Color Blindness Simulation

Color vision deficiency is a very complex topic, and I could not describe the different causes any better than Wikipedia does, so if you want to learn more, you should check out their [article about color blindness](#).

Dichromacy





Tritanopia
D9B8C6

Trichromacy



Original Color
D7BBB3

Protanomaly
CDBEB5

Deuteranomaly
D8BAB3

Tritanomaly
D8B9BF

Monochromacy



Original Color
D7BBB3

Achromatopsia
C2C2C2

Achromatomaly
CABFBD

CSS Examples

Text

The CSS property to change the color of the text to Hex D7BBB3 is called "color". The color property can be set on classes, ids or directly on the HTML element.

This example shows how text in the color #D7BBB3 looks like.

```
.text, #text, p{  
    color:#D7BBB3  
}
```

If you want to add a text shadow in that color use the text-shadow property, you can generate a text shadow directly with our [CSS Text Shadow Generator](#).

Here you see how black text with a 4 pixel #D7BBB3 colored shadow looks like.

```
.shadow{ text-shadow: 4px 4px 2px #D7BBB3  
}
```

Border

The CSS property to change the border of an element to Hex D7BBB3 is called "border". The border property can be set on classes, ids or directly on the HTML element.

This example shows the color as border, it can be applied via the CSS property "border" or "border-color".

```
.border, #border, table{ border:4px solid  
#D7BBB3 }
```

If only the border color should be changed use the property `border-color`.

```
.border{ border-color:#D7BBB3 }
```

If you want to add a box shadow in that color use:

Here you see how a box with a 4 pixel #D7BBB3 colored shadow looks like.

```
.boxshadow{ -moz-box-shadow:4px 4px 4px  
4px #D7BBB3; -webkit-box-shadow:4px 4px  
4px 4px #D7BBB3; box-shadow:4px 4px 4px  
4px #D7BBB3 }
```

Background

The CSS property to change the background color of an element to Hex D7BBB3 is called "background". The background property can be set on classes, ids or directly on the HTML element.

```
.background, #background, body{  
background:#D7BBB3 }
```

If only the background color should be changed can be used:

```
.background{ background-color:#D7BBB3 }
```

This example shows the color as background, it is applied via the CSS property "background".

To optimize and compress your CSS code, you can use our [online CSS compressor and optimizer](#) based on csstidy. If you want to create a linear or radial gradient as background or border, check our [CSS Gradient Generator](#).

Hey! You found this booklet interesting? Support Converting Colors with the new Membership Option!

The pro membership hides all ads, plus gives you double the colors in the color bucket, and more awesome pro features!

[Learn more, Memberships starting at \\$2.50/m!](#)

**Follow me
on Twitter!**

@ConvertingColor