

# Converting Colors

Hex(D7BEB0)

Have a look what the booklet for  
Hex(D7BEB0) contains.

<b>Hex(D7BEB0)</b> .....	3
<i><b>Conversions</b></i> .....	4
<i><b>Details</b></i> .....	6
<i><b>Harmonies</b></i> .....	11
<i><b>Previews</b></i> .....	23
<i><b>Color Blindness Simulation</b></i> .....	26
<i><b>CSS Examples</b></i> .....	29

# **Color**

**Hex(D7BEB0)**

# Conversions

## Conversions Part 1

Format	Color
Hex	D7BEB0
RGB	215, 190, 176
RGB Percent	84%, 75%, 69%
CMY	0.1569, 0.2549, 0.3098
CMYK	0.00, 0.12, 0.18, 0.16
HSL	22°, 33%, 77%
HSV	22°, 18%, 84%
XYZ	54.2743, 54.4086, 48.7156
YIQ	195.8790, 19.3940, 0.9460

# Conversions

## Conversions Part 2

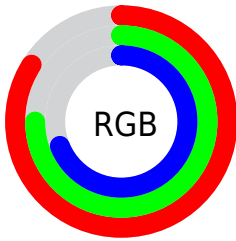
Format	Color
<b>R<sub>YB</sub></b>	215, 198, 176
Decimal	14139056
CIE <sub>Lab</sub>	78.70, 6.63, 10.31
CIE <sub>LCh</sub>	79, 12.255, 57.254
Yxy	54.4086, 0.3448, 0.3457
Android (android.graphics.Color)	4292329136 (0xFFD7BEB0)
YUV	195.8790, -9.8003, 16.7691
Hunter-Lab	73.7622, 2.2566, 12.4759

# Details

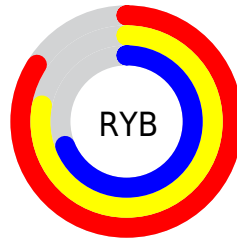
The Hex color **D7BEB0** is a light color, and the websafe version is hex **CCCCCC**. A complement of this color would be **B0C9D7**, and the grayscale version is **C4C4C4**.

A 20% lighter version of the original color is **FFF6E8**, and **A0897C** is the 20% darker color. If you saturate the color by 10%, you get **D7B09B**, and if you desaturate by 10%, it is **D7CCC6**.

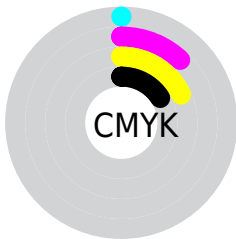
# Distribution



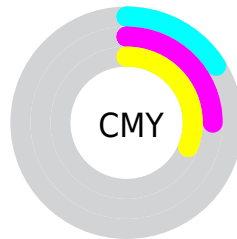
- Red (84%)
- Green (75%)
- Blue (69%)



- Red (84%)
- Yellow (78%)
- Blue (69%)



- Cyan (0%)
- Magenta (12%)
- Yellow (18%)
- Black (16%)



- Cyan (16%)
- Magenta (25%)
- Yellow (31%)

# Brightness & Saturation Gradients

These gradients show how the Hex color D7BEB0 changes by changing the brightness by 10 percent. The first figure shows a shift by +10% for each color and the second figure -10%.

Similar to the brightness gradients but the following saturation gradients show a change of the Hex color D7BEB0 by changing the saturation by 10% instead.



 D7BEB0

 D7BEB0

FFFFFF

 BBA395

 FFF6E8

 A0897C

 856F63

 6C574B

 534034

 3C2A1F

 261507

 030000

 000000

 D7BEB0

 D7BEB0

 D7B09B

 D7CCC6

 D7A285

 D7DADB

 D79570

 D7E7F1

 D7875A

 D7F5FF

 D77945

 D7FFFF

 D76B2F

 D75E1A

 D75004

 D74D00

# Harmonies

## Analogous

The Analogous color harmony consists of three colors that are next to each other on the color wheel.



DBBCB9



D7BEB0



CDC2AC

# Triad

The Triadic color harmony groups three colors that are evenly spaced from another and form a triangle on the color wheel.



D7BEB0



AACAC1



C4C0D7

# Complementary

The Complementary color scheme is a pair of colors which are on the opposite of each other on the color wheel.



D7BEB0



B0C9D7

# Split Complementary

Split-complementary colors differ from the complementary color scheme. The scheme consists of three colors, the original color and two neighbors of the complement color.



B6C4D9



D7BEB0



A6C9CD

# Square

The Square scheme is like the rectangle color scheme, but the four colors are evenly spaced on the color wheel.



D7BEB0



B4C8B6



AAC7D5



D1BDCF

# Rectangle

The Rectangle color scheme consists of four colors that form a rectangle on the color wheel.



D7BEB0



C5C4AD



AAC7D5



BFC1D8



# Sweetspot

The Sweet Spot groups the original color and five complimentary colors.



D7BEB0



FFF7F2



D7B0C9



807B78



000000



808080

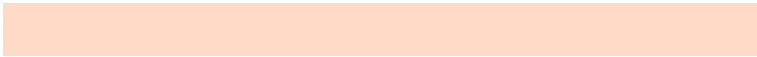


# Same Dimension

The Same Dimension uses a secret algorithm to generate beautiful new colors.



D7BEB0



FFDBC7



D7D1B0



6B6460



AB3D00



2B1000

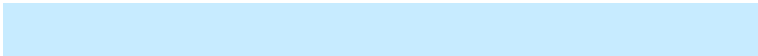


# Inverse Universe

The Inverse Universe completely reimagines the original color for something new.



B0C9D7



C7EBFF



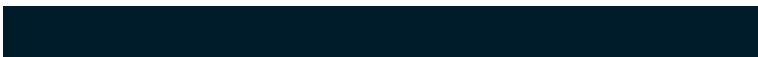
B0B6D7



60676B



006EAB

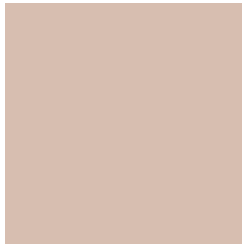


001C2B



# Previews

## White Background



This preview shows how the Hex color D7BEB0 looks on a white background.

## Color Contrast Check

Large Text (above 18pt) WCAG AA × Fail

Any Text WCAG AA × Fail

Large Text (above 18pt) WCAG AAA × Fail

Any Text WCAG AAA × Fail

# Black Background



This preview shows how the Hex color D7BEB0 looks on a black background.

## Color Contrast Check

Large Text (above 18pt) WCAG AA ✓ Pass

Any Text WCAG AA ✓ Pass

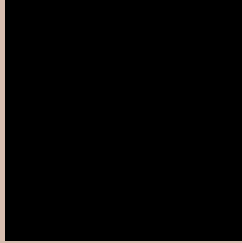
Large Text (above 18pt) WCAG AAA ✓ Pass

Any Text WCAG AAA ✓ Pass

If you want to check with other color combinations, try the [Color Contrast Checker](#).



## Hex D7BEB0 Background



This preview shows how black text looks on a background with the Hex color D7BEB0.



This preview shows how white text looks on a background with the Hex color D7BEB0.

# Color Blindness Simulation

Color vision deficiency is a very complex topic, and I could not describe the different causes any better than Wikipedia does, so if you want to learn more, you should check out their [article about color blindness](#).

## Dichromacy





# Trichromacy



**Original Color**  
D7BEB0

**Protanomaly**  
CFC1B1

**Deuteranomaly**  
DABDB0

**Tritanomaly**  
D9BBC0

# Monochromacy



**Original Color**  
D7BEB0

**Achromatopsia**  
C4C4C4

**Achromatomaly**  
CBC2BD

# CSS Examples

## Text

The CSS property to change the color of the text to Hex D7BEB0 is called "color". The color property can be set on classes, ids or directly on the HTML element.

This example shows how text in the color #D7BEB0 looks like.

```
.text, #text, p{  
    color:#D7BEB0  
}
```

If you want to add a text shadow in that color use the text-shadow property, you can generate a text shadow directly with our [CSS Text Shadow Generator](#).

Here you see how black text with a 4 pixel #D7BEB0 colored shadow looks like.

```
.shadow{ text-shadow: 4px 4px 2px #D7BEB0
}
```

## Border

The CSS property to change the border of an element to Hex D7BEB0 is called "border". The border property can be set on classes, ids or directly on the HTML element.

This example shows the color as border, it can be applied via the CSS property "border" or "border-color".

```
.border, #border, table{ border:4px solid
#D7BEB0 }
```

If only the border color should be changed use the property `border-color`.

```
.border{ border-color:#D7BEB0 }
```

If you want to add a box shadow in that color use:

Here you see how a box with a 4 pixel #D7BEB0 colored shadow looks like.

```
.boxshadow{ -moz-box-shadow:4px 4px 4px  
4px #D7BEB0; -webkit-box-shadow:4px 4px  
4px 4px #D7BEB0; box-shadow:4px 4px 4px  
4px #D7BEB0 }
```

# Background

The CSS property to change the background color of an element to Hex D7BEB0 is called "background". The background property can be set on classes, ids or directly on the HTML element.

```
.background, #background, body{  
background:#D7BEB0 }
```

If only the background color should be changed can be used:

```
.background{ background-color:#D7BEB0 }
```

This example shows the color as background, it is applied via the CSS property "background".

To optimize and compress your CSS code, you can use our [online CSS compressor and optimizer](#) based on csstidy. If you want to create a linear or radial gradient as background or border, check our [CSS Gradient Generator](#).



Hey! You found this booklet interesting? Support Converting Colors with the new Membership Option!

The pro membership hides all ads, plus gives you double the colors in the color bucket, and more awesome pro features!

**[Learn more, Memberships starting at \\$2.50/m!](#)**

**Follow me  
on Twitter!**

@ConvertingColor