

Converting Colors

Hex(D7BEBA)

Have a look what the booklet for
Hex(D7BEBA) contains.

Hex(D7BEBA)	3
<i>Conversions</i>	4
<i>Details</i>	6
<i>Harmonies</i>	11
<i>Previews</i>	23
<i>Color Blindness Simulation</i>	26
<i>CSS Examples</i>	29

Color

Hex(D7BEBA)

Conversions

Conversions Part 1

Format	Color
Hex	D7BEBA
RGB	215, 190, 186
RGB Percent	84%, 75%, 73%
CMY	0.1569, 0.2549, 0.2706
CMYK	0.00, 0.12, 0.13, 0.16
HSL	8°, 27%, 79%
HSV	8°, 13%, 84%
XYZ	55.3007, 54.8192, 54.1209
YIQ	197.0190, 16.1840, 4.0560

Conversions

Conversions Part 2

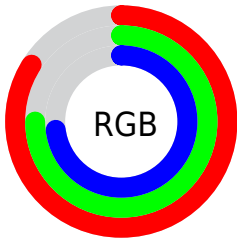
Format	Color
R _Y B	215, 191, 186
Decimal	14139066
CIE Lab	78.94, 8.20, 5.26
CIE LCh	79, 9.743, 32.651
Yxy	54.8192, 0.3367, 0.3338
Android (android.graphics.Color)	4292329146 (0xFFD7BEBA)
YUV	197.0190, -5.4324, 15.7693
Hunter-Lab	74.0400, 3.7524, 8.4889

Details

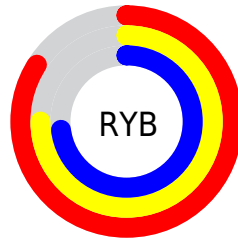
The Hex color **D7BEBA** is a light color, and the websafe version is hex **CCCCCC**. A complement of this color would be **BAD3D7**, and the grayscale version is **C5C5C5**.

A 20% lighter version of the original color is **FFF6F2**, and **A08985** is the 20% darker color. If you saturate the color by 10%, you get **D7ABA5**, and if you desaturate by 10%, it is **D7D1D0**.

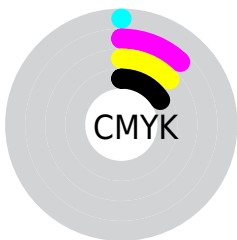
Distribution



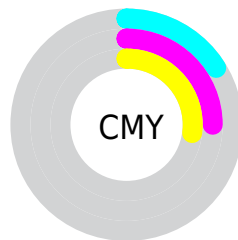
- Red (84%)
- Green (75%)
- Blue (73%)



- Red (84%)
- Yellow (75%)
- Blue (73%)



- Cyan (0%)
- Magenta (12%)
- Yellow (13%)
- Black (16%)



- Cyan (16%)
- Magenta (25%)
- Yellow (27%)

Brightness & Saturation Gradients

These gradients show how the Hex color D7BEBA changes by changing the brightness by 10 percent. The first figure shows a shift by +10% for each color and the second figure -10%.

Similar to the brightness gradients but the following saturation gradients show a change of the Hex color D7BEBA by changing the saturation by 10% instead.

 D7BEBA

FFFFFF

 FFF6F2

 D7BEBA

 BBA39F

 A08985

 866F6C

 6C5753

 54403C

 3C2A27

 261512

 090000

 000000

 D7BEBA

 D7BEBA

 D7ABA5

 D7D1D0

 D7998F

 D7E3E5

 D7867A

 D7F6FB

 D77464

 D7FFFF

 D7614E

 D74F39

 D73C24

 D72A0E

 D71E00

Harmonies

Analogous

The Analogous color harmony consists of three colors that are next to each other on the color wheel.



D6BDC3



D7BEBA



D3C0B4

Triad

The Triadic color harmony groups three colors that are evenly spaced from another and form a triangle on the color wheel.



D7BEBA



B6C8BB



BBC4D5

Complementary

The Complementary color scheme is a pair of colors which are on the opposite of each other on the color wheel.



D7BEBA



BAD3D7

Split Complementary

Split-complementary colors differ from the complementary color scheme. The scheme consists of three colors, the original color and two neighbors of the complement color.



B2C7D3



D7BEBA



AFC9C4

Square

The Square scheme is like the rectangle color scheme, but the four colors are evenly spaced on the color wheel.



D7BEBA



C0C6B4



ADC8CD



C6C1D3

Rectangle

The Rectangle color scheme consists of four colors that form a rectangle on the color wheel.



D7BEBA



CDC2B2



ADC8CD



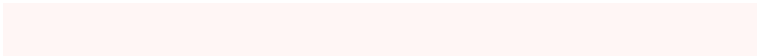
B8C5D5

Sweetspot

The Sweet Spot groups the original color and five complimentary colors.



D7BEBA



FFF6F5



D7BAD3



807A79



000000



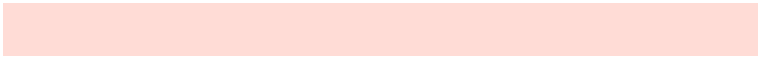
808080

Same Dimension

The Same Dimension uses a secret algorithm to generate beautiful new colors.



D7BEBA



FFDCD6



D7CCBA



6B6260



AB1800



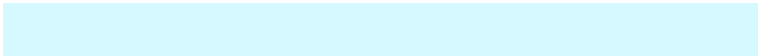
2B0600

Inverse Universe

The Inverse Universe completely reimagines the original color for something new.



BAD3D7



D6F9FF



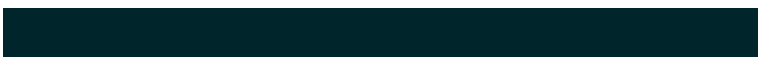
BAC5D7



606A6B



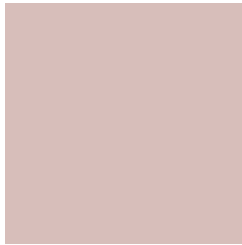
0093AB



00252B

Previews

White Background



This preview shows how the Hex color D7BEBA looks on a white background.

Color Contrast Check

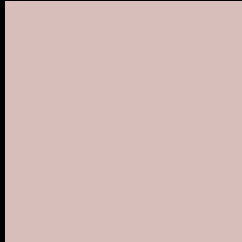
Large Text (above 18pt) WCAG AA × Fail

Any Text WCAG AA × Fail

Large Text (above 18pt) WCAG AAA × Fail

Any Text WCAG AAA × Fail

Black Background



This preview shows how the Hex color D7BEBA looks on a black background.

Color Contrast Check

Large Text (above 18pt) WCAG AA ✓ Pass

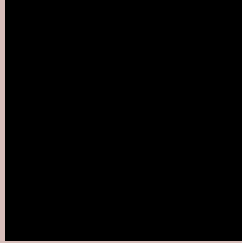
Any Text WCAG AA ✓ Pass

Large Text (above 18pt) WCAG AAA ✓ Pass

Any Text WCAG AAA ✓ Pass

If you want to check with other color combinations, try the [Color Contrast Checker](#).

Hex D7BEBA Background



This preview shows how black text looks on a background with the Hex color D7BEBA.



This preview shows how white text looks on a background with the Hex color D7BEBA.

Color Blindness Simulation

Color vision deficiency is a very complex topic, and I could not describe the different causes any better than Wikipedia does, so if you want to learn more, you should check out their [article about color blindness](#).

Dichromacy





Tritanopia
D9BCCA

Trichromacy



Original Color
D7BEBA

Protanomaly
CEC1BC

Deuteranomaly
D9BDBA

Tritanomaly
D8BDC4

Monochromacy



Original Color
D7BEBA

Achromatopsia
C5C5C5

Achromatomaly
CCC2C1

CSS Examples

Text

The CSS property to change the color of the text to Hex D7BEBA is called "color". The color property can be set on classes, ids or directly on the HTML element.

This example shows how text in the color #D7BEBA looks like.

```
.text, #text, p{  
    color:#D7BEBA  
}
```

If you want to add a text shadow in that color use the text-shadow property, you can generate a text shadow directly with our [CSS Text Shadow Generator](#).

Here you see how black text with a 4 pixel #D7BEBA colored shadow looks like.

```
.shadow{ text-shadow: 4px 4px 2px #D7BEBA
}
```

Border

The CSS property to change the border of an element to Hex D7BEBA is called "border". The border property can be set on classes, ids or directly on the HTML element.

This example shows the color as border, it can be applied via the CSS property "border" or "border-color".

```
.border, #border, table{ border:4px solid
#D7BEBA }
```

If only the border color should be changed use the property `border-color`.

```
.border{ border-color:#D7BEBA }
```

If you want to add a box shadow in that color use:

Here you see how a box with a 4 pixel #D7BEBA colored shadow looks like.

```
.boxshadow{ -moz-box-shadow:4px 4px 4px  
4px #D7BEBA; -webkit-box-shadow:4px 4px  
4px 4px #D7BEBA; box-shadow:4px 4px 4px  
4px #D7BEBA }
```

Background

The CSS property to change the background color of an element to Hex D7BEBA is called "background". The background property can be set on classes, ids or directly on the HTML element.

```
.background, #background, body{  
background:#D7BEBA }
```

If only the background color should be changed can be used:

```
.background{ background-color:#D7BEBA }
```

This example shows the color as background, it is applied via the CSS property "background".

To optimize and compress your CSS code, you can use our [online CSS compressor and optimizer](#) based on csstidy. If you want to create a linear or radial gradient as background or border, check our [CSS Gradient Generator](#).

Hey! You found this booklet interesting? Support Converting Colors with the new Membership Option!

The pro membership hides all ads, plus gives you double the colors in the color bucket, and more awesome pro features!

[Learn more, Memberships starting at \\$2.50/m!](#)

**Follow me
on Twitter!**

@ConvertingColor