

# Converting Colors

Hex(D7BEC6)

Have a look what the booklet for  
Hex(D7BEC6) contains.

<b>Hex(D7BEC6)</b> .....	3
<i><b>Conversions</b></i> .....	4
<i><b>Details</b></i> .....	6
<i><b>Harmonies</b></i> .....	11
<i><b>Previews</b></i> .....	23
<i><b>Color Blindness Simulation</b></i> .....	26
<i><b>CSS Examples</b></i> .....	29

# **Color**

**Hex(D7BEC6)**

# Conversions

## Conversions Part 1

Format	Color
Hex	D7BEC6
RGB	215, 190, 198
RGB Percent	84%, 75%, 78%
CMY	0.1569, 0.2549, 0.2235
CMYK	0.00, 0.12, 0.08, 0.16
HSL	341°, 24%, 79%
HSV	341°, 12%, 84%
XYZ	56.6308, 55.3512, 61.1252
YIQ	198.3870, 12.3320, 7.7880

# Conversions

## Conversions Part 2

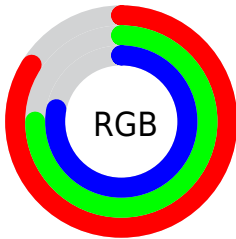
<b>Format</b>	<b>Color</b>
R <sub>Y</sub> B	215, 190, 198
Decimal	14139078
CIE Lab	79.24, 10.20, -0.77
CIE LCh	79, 10.233, 355.658
Yxy	55.3512, 0.3271, 0.3198
Android (android.graphics.Color)	4292329158 (0xFFD7BEC6)
YUV	198.3870, -0.1908, 14.5696
Hunter-Lab	74.3984, 5.6741, 3.3666

# Details

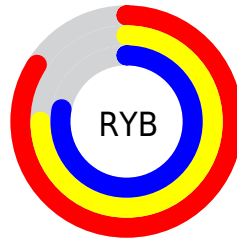
The Hex color **D7BEC6** is a light color, and the websafe version is hex **CCCCCC**. A complement of this color would be **BED7CF**, and the grayscale version is **C6C6C6**.

A 20% lighter version of the original color is **FFF6FF**, and **A08990** is the 20% darker color. If you saturate the color by 10%, you get **D7A9B7**, and if you desaturate by 10%, it is **D7D4D5**.

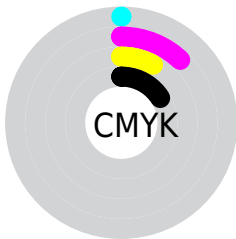
# Distribution



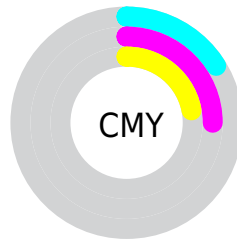
- Red (84%)
- Green (75%)
- Blue (78%)



- Red (84%)
- Yellow (75%)
- Blue (78%)



- Cyan (0%)
- Magenta (12%)
- Yellow (8%)
- Black (16%)



- Cyan (16%)
- Magenta (25%)
- Yellow (22%)

# Brightness & Saturation Gradients

These gradients show how the Hex color D7BEC6 changes by changing the brightness by 10 percent. The first figure shows a shift by +10% for each color and the second figure -10%.

Similar to the brightness gradients but the following saturation gradients show a change of the Hex color D7BEC6 by changing the saturation by 10% instead.



 D7BEC6

FFFFFF

 FFF6FF

 D7BEC6

 BBA3AB

 A08990


 866F77

 6C575E

 543F46

 3D2930

 26151B

 110000

 000000

 D7BEC6

 D7BEC6

 D7A9B7

 D7D4D5

 D793A9

 D7E9E3

 D77E9A

 D7FFF2

 D7688C

 D7FFFF

 D7537D

 D73D6E

 D72860

 D71251

 D70045

# Harmonies

## Analogous

The Analogous color harmony consists of three colors that are next to each other on the color wheel.



D0C0CF



D7BEC6



D9BEB3

# Triad

The Triadic color harmony groups three colors that are evenly spaced from another and form a triangle on the color wheel.



D7BEC6



C3C6B3



B0C8D4

# Complementary

The Complementary color scheme is a pair of colors which are on the opposite of each other on the color wheel.



D7BEC6



BED7CF

# Split Complementary

Split-complementary colors differ from the complementary color scheme. The scheme consists of three colors, the original color and two neighbors of the complement color.



ADCACC



D7BEC6



B8C9B9

# Square

The Square scheme is like the rectangle color scheme, but the four colors are evenly spaced on the color wheel.



D7BEC6



CEC3B1



B0CAC2



B9C5D7

# Rectangle

The Rectangle color scheme consists of four colors that form a rectangle on the color wheel.



D7BEC6



D7BFB7



B0CAC2



AEC9D1



# Sweetspot

The Sweet Spot groups the original color and five complimentary colors.



D7BEC6



FFF7FA



CFBED7



807A7C



000000



808080



# Same Dimension

The Same Dimension uses a secret algorithm to generate beautiful new colors.



D7BEC6



FFDBE7



D7C2BE



6B6064



AB0037



2B000E



# Inverse Universe

The Inverse Universe completely reimagines the original color for something new.



D7BEC6



FFDBE7



BED3D7



6B6064



AB0037

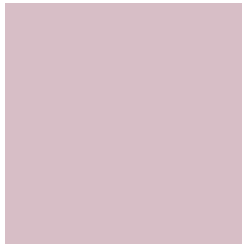


2B000E



# Previews

## White Background



This preview shows how the Hex color D7BEC6 looks on a white background.

## Color Contrast Check

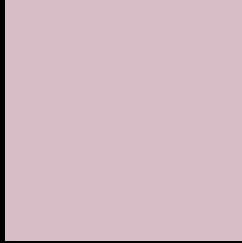
Large Text (above 18pt) WCAG AA × Fail

Any Text WCAG AA × Fail

Large Text (above 18pt) WCAG AAA × Fail

Any Text WCAG AAA × Fail

# Black Background



This preview shows how the Hex color D7BEC6 looks on a black background.

## Color Contrast Check

Large Text (above 18pt) WCAG AA ✓ Pass

Any Text WCAG AA ✓ Pass

Large Text (above 18pt) WCAG AAA ✓ Pass

Any Text WCAG AAA ✓ Pass

If you want to check with other color combinations, try the [Color Contrast Checker](#).



## Hex D7BEC6 Background



This preview shows how black text looks on a background with the Hex color D7BEC6.



This preview shows how white text looks on a background with the Hex color D7BEC6.

# Color Blindness Simulation

Color vision deficiency is a very complex topic, and I could not describe the different causes any better than Wikipedia does, so if you want to learn more, you should check out their [article about color blindness](#).

## Dichromacy



**Original Color**  
D7BEC6

**Protanopia**  
C6C3C9

**Deuteranopia**  
D6BEC6



**Tritanopia**  
D8BDCC

# Trichromacy



**Original Color**  
D7BEC6

**Protanomaly**  
CCC1C8

**Deuteranomaly**  
D6BEC6

**Tritanomaly**  
D8BDCA

# Monochromacy



**Original Color**  
D7BEC6

**Achromatopsia**  
C6C6C6

**Achromatomaly**  
CCC3C6

# CSS Examples

## Text

The CSS property to change the color of the text to Hex D7BEC6 is called "color". The color property can be set on classes, ids or directly on the HTML element.

This example shows how text in the color #D7BEC6 looks like.

```
.text, #text, p{  
    color:#D7BEC6  
}
```

If you want to add a text shadow in that color use the text-shadow property, you can generate a text shadow directly with our [CSS Text Shadow Generator](#).

Here you see how black text with a 4 pixel #D7BEC6 colored shadow looks like.

```
.shadow{ text-shadow: 4px 4px 2px #D7BEC6  
}
```

## Border

The CSS property to change the border of an element to Hex D7BEC6 is called "border". The border property can be set on classes, ids or directly on the HTML element.

This example shows the color as border, it can be applied via the CSS property "border" or "border-color".

```
.border, #border, table{ border:4px solid  
#D7BEC6 }
```

If only the border color should be changed use the property `border-color`.

```
.border{ border-color:#D7BEC6 }
```

If you want to add a box shadow in that color use:

Here you see how a box with a 4 pixel #D7BEC6 colored shadow looks like.

```
.boxshadow{ -moz-box-shadow:4px 4px 4px  
4px #D7BEC6; -webkit-box-shadow:4px 4px  
4px 4px #D7BEC6; box-shadow:4px 4px 4px  
4px #D7BEC6 }
```

# Background

The CSS property to change the background color of an element to Hex D7BEC6 is called "background". The background property can be set on classes, ids or directly on the HTML element.

```
.background, #background, body{  
background:#D7BEC6 }
```

If only the background color should be changed can be used:

```
.background{ background-color:#D7BEC6 }
```

This example shows the color as background, it is applied via the CSS property "background".

To optimize and compress your CSS code, you can use our [online CSS compressor and optimizer](#) based on csstidy. If you want to create a linear or radial gradient as background or border, check our [CSS Gradient Generator](#).



Hey! You found this booklet interesting? Support Converting Colors with the new Membership Option!

The pro membership hides all ads, plus gives you double the colors in the color bucket, and more awesome pro features!

**[Learn more, Memberships starting at \\$2.50/m!](#)**

**Follow me  
on Twitter!**

@ConvertingColor