

Converting Colors

Hex(D7BFA5)

Have a look what the booklet for
Hex(D7BFA5) contains.

Hex(D7BFA5)	3
<i>Conversions</i>	4
<i>Details</i>	6
<i>Harmonies</i>	11
<i>Previews</i>	23
<i>Color Blindness Simulation</i>	26
<i>CSS Examples</i>	29

Color

Hex(D7BFA5)

Conversions

Conversions Part 1

Format	Color
Hex	D7BFA5
RGB	215, 191, 165
RGB Percent	84%, 75%, 65%
CMY	0.1569, 0.2510, 0.3529
CMYK	0.00, 0.11, 0.23, 0.16
HSL	31°, 38%, 75%
HSV	31°, 23%, 84%
XYZ	53.4467, 54.4253, 43.2855
YIQ	195.2120, 22.6500, -2.9980

Conversions

Conversions Part 2

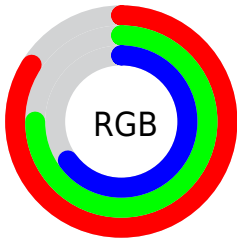
Format	Color
RYB	211, 215, 165
Decimal	14139301
CIELab	78.71, 4.47, 16.23
CIElCh	79, 16.836, 74.612
Yxy	54.4253, 0.3536, 0.3601
Android (android.graphics.Color)	4292329381 (0xFFD7BFA5)
YUV	195.2120, -14.8945, 17.3541
Hunter-Lab	73.7735, 0.2142, 16.8539

Details

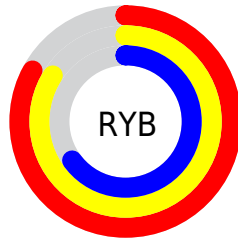
The Hex color **D7BFA5** is a light color, and the websafe version is hex **CCCC99**. A complement of this color would be **A5BDD7**, and the grayscale version is **C3C3C3**.

A 20% lighter version of the original color is **FFF7DC**, and **A08A71** is the 20% darker color. If you saturate the color by 10%, you get **D7B590**, and if you desaturate by 10%, it is **D7C9BB**.

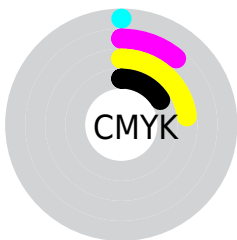
Distribution



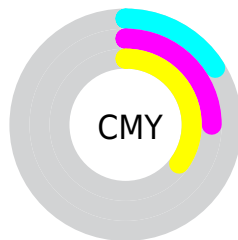
- Red (84%)
- Green (75%)
- Blue (65%)



- Red (83%)
- Yellow (84%)
- Blue (65%)



- Cyan (0%)
- Magenta (11%)
- Yellow (23%)
- Black (16%)



- Cyan (16%)
- Magenta (25%)
- Yellow (35%)

Brightness & Saturation Gradients

These gradients show how the Hex color D7BFA5 changes by changing the brightness by 10 percent. The first figure shows a shift by +10% for each color and the second figure -10%.

Similar to the brightness gradients but the following saturation gradients show a change of the Hex color D7BFA5 by changing the saturation by 10% instead.

 D7BFA5

 D7BFA5

FFFFFF

 BBA48B

 FFF7DC

 A08A71

 FFFFF9

 857059

 6B5841

 53412B

 3B2B16

 251600

 000000

 D7BFA5

 D7BFA5

 D7B590

 D7C9BB

 D7AA7A

 D7D4D0

 D7A065

 D7DEE6

 D7964F

 D7E8FB

 D78B3A

 D7F3FF

 D78124

 D7FDFE

 D7770E

 D7FFFF

 D77000

Harmonies

Analogous

The Analogous color harmony consists of three colors that are next to each other on the color wheel.



E1BAAD



D7BFA5



C7C4A5

Triad

The Triadic color harmony groups three colors that are evenly spaced from another and form a triangle on the color wheel.



D7BFA5



9BCCCA



CFBCD9

Complementary

The Complementary color scheme is a pair of colors which are on the opposite of each other on the color wheel.



D7BFA5



A5BDD7

Split Complementary

Split-complementary colors differ from the complementary color scheme. The scheme consists of three colors, the original color and two neighbors of the complement color.



BBC2E1



D7BFA5



9CCAD8

Square

The Square scheme is like the rectangle color scheme, but the four colors are evenly spaced on the color wheel.



D7BFA5



A5CBBA



A8C7E1



DEB9CC

Rectangle

The Rectangle color scheme consists of four colors that form a rectangle on the color wheel.



D7BFA5



BBC7A9



A8C7E1



C9BEDD

Sweetspot

The Sweet Spot groups the original color and five complimentary colors.



D7BFA5



FFF6ED



D7A5BD



807B75



000000



808080

Same Dimension

The Same Dimension uses a secret algorithm to generate beautiful new colors.



D7BFA5



FFDDB8



D6D7A5



6B6660



AB5900



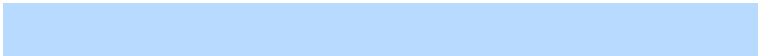
2B1700

Inverse Universe

The Inverse Universe completely reimagines the original color for something new.



A5BDD7



B8DAFF



A6A5D7



60666B



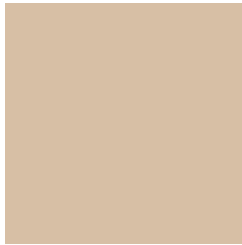
0052AB



00152B

Previews

White Background



This preview shows how the Hex color D7BFA5 looks on a white background.

Color Contrast Check

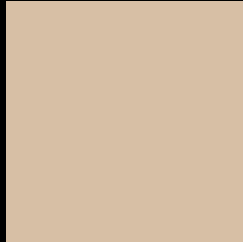
Large Text (above 18pt) WCAG AA × Fail

Any Text WCAG AA × Fail

Large Text (above 18pt) WCAG AAA × Fail

Any Text WCAG AAA × Fail

Black Background



This preview shows how the Hex color D7BFA5 looks on a black background.

Color Contrast Check

Large Text (above 18pt) WCAG AA ✓ Pass

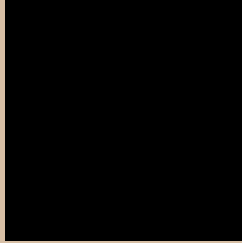
Any Text WCAG AA ✓ Pass

Large Text (above 18pt) WCAG AAA ✓ Pass

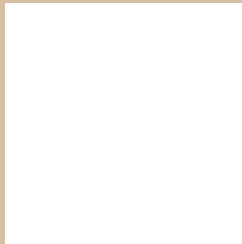
Any Text WCAG AAA ✓ Pass

If you want to check with other color combinations, try the [Color Contrast Checker](#).

Hex D7BFA5 Background



This preview shows how black text looks on a background with the Hex color D7BFA5.



This preview shows how white text looks on a background with the Hex color D7BFA5.

Color Blindness Simulation

Color vision deficiency is a very complex topic, and I could not describe the different causes any better than Wikipedia does, so if you want to learn more, you should check out their [article about color blindness](#).

Dichromacy

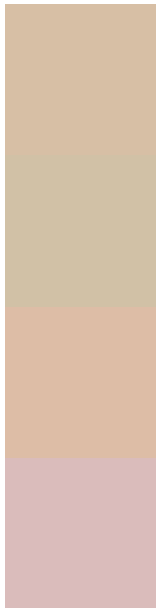


Original Color
D7BFA5

Protanopia
CDC2A7

Deuteranopia
E0BCA6

Trichromacy



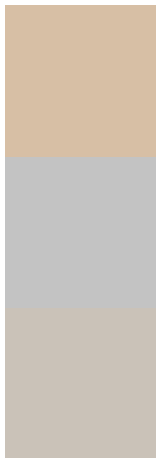
Original Color
D7BFA5

Protanomaly
D1C1A6

Deuteranomaly
DDBDA6

Tritanomaly
DABCBB

Monochromacy



Original Color
D7BFA5

Achromatopsia
C3C3C3

Achromatomaly
CAC2B8

CSS Examples

Text

The CSS property to change the color of the text to Hex D7BFA5 is called "color". The color property can be set on classes, ids or directly on the HTML element.

This example shows how text in the color #D7BFA5 looks like.

```
.text, #text, p{  
    color:#D7BFA5  
}
```

If you want to add a text shadow in that color use the text-shadow property, you can generate a text shadow directly with our [CSS Text Shadow Generator](#).

Here you see how black text with a 4 pixel #D7BFA5 colored shadow looks like.

```
.shadow{ text-shadow: 4px 4px 2px #D7BFA5
}
```

Border

The CSS property to change the border of an element to Hex D7BFA5 is called "border". The border property can be set on classes, ids or directly on the HTML element.

This example shows the color as border, it can be applied via the CSS property "border" or "border-color".

```
.border, #border, table{ border:4px solid
#D7BFA5 }
```

If only the border color should be changed use the property `border-color`.

```
.border{ border-color:#D7BFA5 }
```

If you want to add a box shadow in that color use:

Here you see how a box with a 4 pixel #D7BFA5 colored shadow looks like.

```
.boxshadow{ -moz-box-shadow:4px 4px 4px  
4px #D7BFA5; -webkit-box-shadow:4px 4px  
4px 4px #D7BFA5; box-shadow:4px 4px 4px  
4px #D7BFA5 }
```

Background

The CSS property to change the background color of an element to Hex D7BFA5 is called "background". The background property can be set on classes, ids or directly on the HTML element.

```
.background, #background, body{  
background:#D7BFA5 }
```

If only the background color should be changed can be used:

```
.background{ background-color:#D7BFA5 }
```

This example shows the color as background, it is applied via the CSS property "background".

To optimize and compress your CSS code, you can use our [online CSS compressor and optimizer](#) based on csstidy. If you want to create a linear or radial gradient as background or border, check our [CSS Gradient Generator](#).

Hey! You found this booklet interesting? Support Converting Colors with the new Membership Option!

The pro membership hides all ads, plus gives you double the colors in the color bucket, and more awesome pro features!

[Learn more, Memberships starting at \\$2.50/m!](#)

**Follow me
on Twitter!**

@ConvertingColor