

# Converting Colors

Hex(D7BFB4)

Have a look what the booklet for  
Hex(D7BFB4) contains.

<b>Hex(D7BFB4)</b> .....	3
<i><b>Conversions</b></i> .....	4
<i><b>Details</b></i> .....	6
<i><b>Harmonies</b></i> .....	11
<i><b>Previews</b></i> .....	23
<i><b>Color Blindness Simulation</b></i> .....	26
<i><b>CSS Examples</b></i> .....	29

# **Color**

**Hex(D7BFB4)**

# Conversions

## Conversions Part 1

Format	Color
Hex	D7BFB4
RGB	215, 191, 180
RGB Percent	84%, 75%, 71%
CMY	0.1569, 0.2510, 0.2941
CMYK	0.00, 0.11, 0.16, 0.16
HSL	19°, 30%, 77%
HSV	19°, 16%, 84%
XYZ	54.8934, 55.0040, 50.9037
YIQ	196.9220, 17.8350, 1.6670

# Conversions

## Conversions Part 2

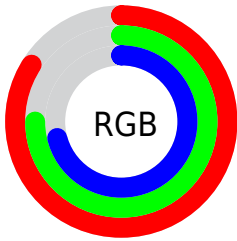
Format	Color
R <sub>Y</sub> B	215, 196, 180
Decimal	14139316
CIE Lab	79.04, 6.72, 8.64
CIE LCh	79, 10.947, 52.152
Yxy	55.0040, 0.3414, 0.3421
Android (android.graphics.Color)	4292329396 (0xFFD7BFB4)
YUV	196.9220, -8.3425, 15.8544
Hunter-Lab	74.1647, 2.3295, 11.2210

# Details

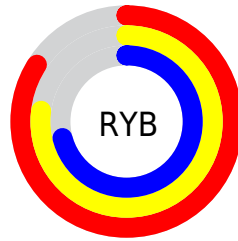
The Hex color **D7BFB4** is a light color, and the websafe version is hex **CCCCCC**. A complement of this color would be **B4CCD7**, and the grayscale version is **C5C5C5**.

A 20% lighter version of the original color is **FFF7EC**, and **A08A7F** is the 20% darker color. If you saturate the color by 10%, you get **D7B09F**, and if you desaturate by 10%, it is **D7CECA**.

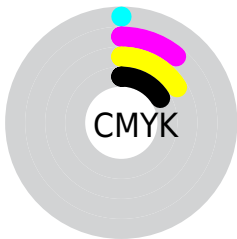
# Distribution



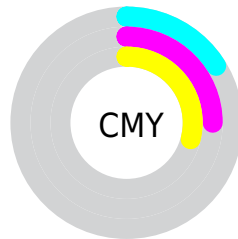
- Red (84%)
- Green (75%)
- Blue (71%)



- Red (84%)
- Yellow (77%)
- Blue (71%)



- Cyan (0%)
- Magenta (11%)
- Yellow (16%)
- Black (16%)



- Cyan (16%)
- Magenta (25%)
- Yellow (29%)

# Brightness & Saturation Gradients

These gradients show how the Hex color D7BFB4 changes by changing the brightness by 10 percent. The first figure shows a shift by +10% for each color and the second figure -10%.

Similar to the brightness gradients but the following saturation gradients show a change of the Hex color D7BFB4 by changing the saturation by 10% instead.



 D7BFB4

 D7BFB4

FFFFFF

 BBA499

 FFF7EC

 A08A7F

 867066

 6C584E

 534037

 3C2A22

 26160C

 070000

 000000

 D7BFB4

 D7BFB4

 D7B09F

 D7CECA

 D7A289

 D7DCDF

 D79374

 D7EBF5

 D7845E

 D7FAFF

 D77549

 D7FFFF

 D76733

 D7581E

 D74908

 D74400

# Harmonies

## Analogous

The Analogous color harmony consists of three colors that are next to each other on the color wheel.



DABDBC



D7BFB4



CFC2B0

# Triad

The Triadic color harmony groups three colors that are evenly spaced from another and form a triangle on the color wheel.



D7BFB4



AFCAC1



C3C2D6

# Complementary

The Complementary color scheme is a pair of colors which are on the opposite of each other on the color wheel.



D7BFB4



B4CCD7

# Split Complementary

Split-complementary colors differ from the complementary color scheme. The scheme consists of three colors, the original color and two neighbors of the complement color.



B6C5D8



D7BFB4



AACACB

# Square

The Square scheme is like the rectangle color scheme, but the four colors are evenly spaced on the color wheel.



D7BFB4



B8C8B7



ADC8D3



CFBFD0

# Rectangle

The Rectangle color scheme consists of four colors that form a rectangle on the color wheel.



D7BFB4



C8C4B0



ADC8D3



BEC3D7



# Sweetspot

The Sweet Spot groups the original color and five complimentary colors.



D7BFB4



FFF6F2



D7B4CD



807A78



000000



808080

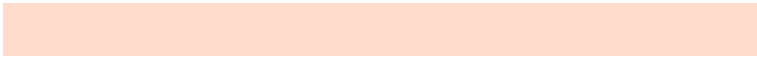


# Same Dimension

The Same Dimension uses a secret algorithm to generate beautiful new colors.



D7BFB4



FFDCCC



D7D0B4



6B6460



AB3600



2B0E00

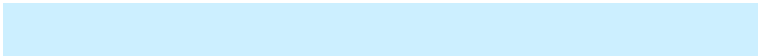


# Inverse Universe

The Inverse Universe completely reimagines the original color for something new.



B4CCD7



CCEFFF



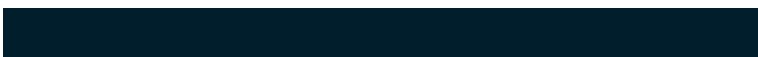
B4BBD7



60686B



0075AB

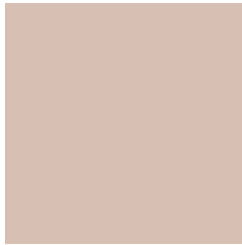


001E2B



# Previews

## White Background



This preview shows how the Hex color D7BFB4 looks on a white background.

## Color Contrast Check

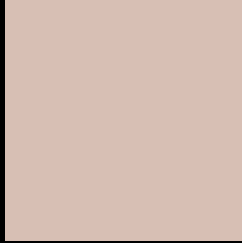
Large Text (above 18pt) WCAG AA × Fail

Any Text WCAG AA × Fail

Large Text (above 18pt) WCAG AAA × Fail

Any Text WCAG AAA × Fail

# Black Background



This preview shows how the Hex color D7BFB4 looks on a black background.

## Color Contrast Check

Large Text (above 18pt) WCAG AA ✓ Pass

Any Text WCAG AA ✓ Pass

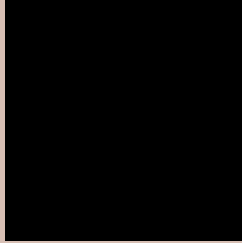
Large Text (above 18pt) WCAG AAA ✓ Pass

Any Text WCAG AAA ✓ Pass

If you want to check with other color combinations, try the [Color Contrast Checker](#).



## Hex D7BFB4 Background



This preview shows how black text looks on a background with the Hex color D7BFB4.



This preview shows how white text looks on a background with the Hex color D7BFB4.

# Color Blindness Simulation

Color vision deficiency is a very complex topic, and I could not describe the different causes any better than Wikipedia does, so if you want to learn more, you should check out their [article about color blindness](#).

## Dichromacy



**Original Color**  
D7BFB4

**Protanopia**  
CBC3B6

**Deuteranopia**  
DCBDB4



# Trichromacy



**Original Color**  
D7BFB4

**Protanomaly**  
CFC2B5

**Deuteranomaly**  
DABEB4

**Tritanomaly**  
D9BDC2

# Monochromacy



**Original Color**  
D7BFB4

**Achromatopsia**  
C5C5C5

**Achromatomaly**  
CCC3BF

# CSS Examples

## Text

The CSS property to change the color of the text to Hex D7BFB4 is called "color". The color property can be set on classes, ids or directly on the HTML element.

This example shows how text in the color #D7BFB4 looks like.

```
.text, #text, p{  
    color:#D7BFB4  
}
```

If you want to add a text shadow in that color use the text-shadow property, you can generate a text shadow directly with our [CSS Text Shadow Generator](#).

Here you see how black text with a 4 pixel #D7BFB4 colored shadow looks like.

```
.shadow{ text-shadow: 4px 4px 2px #D7BFB4
}
```

## Border

The CSS property to change the border of an element to Hex D7BFB4 is called "border". The border property can be set on classes, ids or directly on the HTML element.

This example shows the color as border, it can be applied via the CSS property "border" or "border-color".

```
.border, #border, table{ border:4px solid
#D7BFB4 }
```

If only the border color should be changed use the property `border-color`.

```
.border{ border-color:#D7BFB4 }
```

If you want to add a box shadow in that color use:

Here you see how a box with a 4 pixel #D7BFB4 colored shadow looks like.

```
.boxshadow{ -moz-box-shadow:4px 4px 4px  
4px #D7BFB4; -webkit-box-shadow:4px 4px  
4px 4px #D7BFB4; box-shadow:4px 4px 4px  
4px #D7BFB4 }
```

# Background

The CSS property to change the background color of an element to Hex D7BFB4 is called "background". The background property can be set on classes, ids or directly on the HTML element.

```
.background, #background, body{  
background:#D7BFB4 }
```

If only the background color should be changed can be used:

```
.background{ background-color:#D7BFB4 }
```

This example shows the color as background, it is applied via the CSS property "background".

To optimize and compress your CSS code, you can use our [online CSS compressor and optimizer](#) based on csstidy. If you want to create a linear or radial gradient as background or border, check our [CSS Gradient Generator](#).



Hey! You found this booklet interesting? Support Converting Colors with the new Membership Option!

The pro membership hides all ads, plus gives you double the colors in the color bucket, and more awesome pro features!

**[Learn more, Memberships starting at \\$2.50/m!](#)**

**Follow me  
on Twitter!**

@ConvertingColor