

# Converting Colors

Hex(D7BFB6)

Have a look what the booklet for  
Hex(D7BFB6) contains.

<b>Hex(D7BFB6)</b> .....	3
<i><b>Conversions</b></i> .....	4
<i><b>Details</b></i> .....	6
<i><b>Harmonies</b></i> .....	11
<i><b>Previews</b></i> .....	23
<i><b>Color Blindness Simulation</b></i> .....	26
<i><b>CSS Examples</b></i> .....	29

# **Color**

**Hex(D7BFB6)**

# Conversions

## Conversions Part 1

Format	Color
Hex	D7BFB6
RGB	215, 191, 182
RGB Percent	84%, 75%, 71%
CMY	0.1569, 0.2510, 0.2863
CMYK	0.00, 0.11, 0.15, 0.16
HSL	16°, 29%, 78%
HSV	16°, 15%, 84%
XYZ	55.0986, 55.0861, 51.9846
YIQ	197.1500, 17.1930, 2.2890

# Conversions

## Conversions Part 2

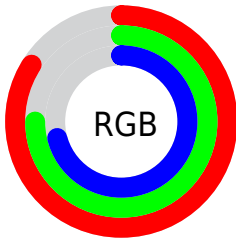
Format	Color
R <sub>Y</sub> B	215, 194, 182
Decimal	14139318
CIE Lab	79.09, 7.03, 7.63
CIE LCh	79, 10.379, 47.355
Yxy	55.0861, 0.3398, 0.3397
Android (android.graphics.Color)	4292329398 (0xFFD7BFB6)
YUV	197.1500, -7.4689, 15.6545
Hunter-Lab	74.2200, 2.6279, 10.4265

# Details

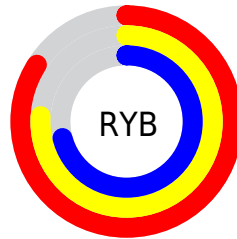
The Hex color **D7BFB6** is a light color, and the websafe version is hex **CCCCCC**. A complement of this color would be **B6CED7**, and the grayscale version is **C5C5C5**.

A 20% lighter version of the original color is **FFF7EE**, and **A08A81** is the 20% darker color. If you saturate the color by 10%, you get **D7AFA1**, and if you desaturate by 10%, it is **D7CFCC**.

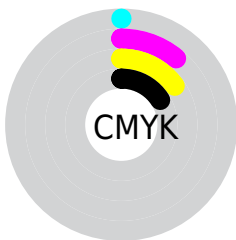
# Distribution



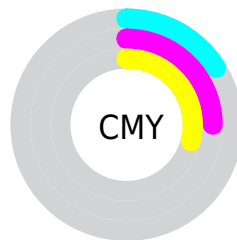
- Red (84%)
- Green (75%)
- Blue (71%)



- Red (84%)
- Yellow (76%)
- Blue (71%)



- Cyan (0%)
- Magenta (11%)
- Yellow (15%)
- Black (16%)



- Cyan (16%)
- Magenta (25%)
- Yellow (29%)

# Brightness & Saturation Gradients

These gradients show how the Hex color D7BFB6 changes by changing the brightness by 10 percent. The first figure shows a shift by +10% for each color and the second figure -10%.

Similar to the brightness gradients but the following saturation gradients show a change of the Hex color D7BFB6 by changing the saturation by 10% instead.



 D7BFB6

 D7BFB6

FFFFFF

 BBA49B

 FFF7EE

 A08A81

 867068

 6C5850

 544039

 3C2A24

 26160E

 080000

 000000

 D7BFB6

 D7BFB6

 D7AFA1

 D7CFCC

 D7A08B

 D7DEE1

 D79076

 D7EEF7

 D78060

 D7FEFF

 D7714A

 D7FFFF

 D76135

 D7521F

 D7420A

 D73B00

# Harmonies

## Analogous

The Analogous color harmony consists of three colors that are next to each other on the color wheel.



D9BDBE



D7BFB6



D0C2B1

# Triad

The Triadic color harmony groups three colors that are evenly spaced from another and form a triangle on the color wheel.



D7BFB6



B1C9BF



C1C3D6

# Complementary

The Complementary color scheme is a pair of colors which are on the opposite of each other on the color wheel.



D7BFB6



B6CED7

# Split Complementary

Split-complementary colors differ from the complementary color scheme. The scheme consists of three colors, the original color and two neighbors of the complement color.



B5C6D6



D7BFB6



ACCAC9

# Square

The Square scheme is like the rectangle color scheme, but the four colors are evenly spaced on the color wheel.



D7BFB6



BBC8B7



AEC8D2



CDC0D1

# Rectangle

The Rectangle color scheme consists of four colors that form a rectangle on the color wheel.



D7BFB6



C9C4B1



AEC8D2



BDC4D7



# Sweetspot

The Sweet Spot groups the original color and five complimentary colors.



D7BFB6



FFF6F2



D7B6CE



807A78



000000



808080

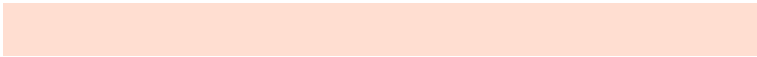


# Same Dimension

The Same Dimension uses a secret algorithm to generate beautiful new colors.



D7BFB6



FFDED1



D7CFB6



6B6360



AB2F00



2B0C00

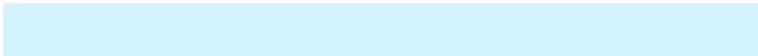


# Inverse Universe

The Inverse Universe completely reimagines the original color for something new.



B6CED7



D1F2FF



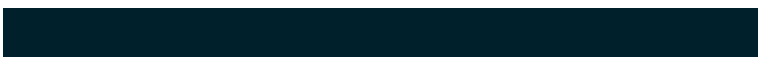
B6BED7



60686B



007CAB

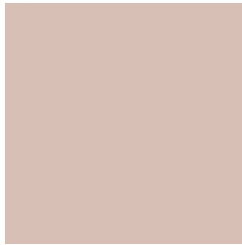


00202B



# Previews

## White Background



This preview shows how the Hex color D7BFB6 looks on a white background.

## Color Contrast Check

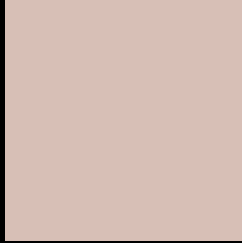
Large Text (above 18pt) WCAG AA × Fail

Any Text WCAG AA × Fail

Large Text (above 18pt) WCAG AAA × Fail

Any Text WCAG AAA × Fail

# Black Background



This preview shows how the Hex color D7BFB6 looks on a black background.

## Color Contrast Check

Large Text (above 18pt) WCAG AA ✓ Pass

Any Text WCAG AA ✓ Pass

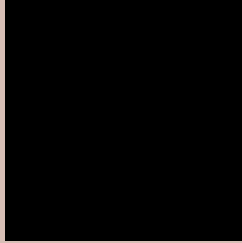
Large Text (above 18pt) WCAG AAA ✓ Pass

Any Text WCAG AAA ✓ Pass

If you want to check with other color combinations, try the [Color Contrast Checker](#).



## Hex D7BFB6 Background



This preview shows how black text looks on a background with the Hex color D7BFB6.



This preview shows how white text looks on a background with the Hex color D7BFB6.

# Color Blindness Simulation

Color vision deficiency is a very complex topic, and I could not describe the different causes any better than Wikipedia does, so if you want to learn more, you should check out their [article about color blindness](#).

## Dichromacy





# Trichromacy



**Original Color**  
D7BFB6

**Protanomaly**  
CFC2B7

**Deuteranomaly**  
DABEB6

**Tritanomaly**  
D9BDC3

# Monochromacy



**Original Color**  
D7BFB6

**Achromatopsia**  
C5C5C5

**Achromatomaly**  
CCC3C0

# CSS Examples

## Text

The CSS property to change the color of the text to Hex D7BFB6 is called "color". The color property can be set on classes, ids or directly on the HTML element.

This example shows how text in the color #D7BFB6 looks like.

```
.text, #text, p{  
    color:#D7BFB6  
}
```

If you want to add a text shadow in that color use the text-shadow property, you can generate a text shadow directly with our [CSS Text Shadow Generator](#).

Here you see how black text with a 4 pixel #D7BFB6 colored shadow looks like.

```
.shadow{ text-shadow: 4px 4px 2px #D7BFB6  
}
```

## Border

The CSS property to change the border of an element to Hex D7BFB6 is called "border". The border property can be set on classes, ids or directly on the HTML element.

This example shows the color as border, it can be applied via the CSS property "border" or "border-color".

```
.border, #border, table{ border:4px solid  
#D7BFB6 }
```

If only the border color should be changed use the property `border-color`.

```
.border{ border-color:#D7BFB6 }
```

If you want to add a box shadow in that color use:

Here you see how a box with a 4 pixel #D7BFB6 colored shadow looks like.

```
.boxshadow{ -moz-box-shadow:4px 4px 4px  
4px #D7BFB6; -webkit-box-shadow:4px 4px  
4px 4px #D7BFB6; box-shadow:4px 4px 4px  
4px #D7BFB6 }
```

# Background

The CSS property to change the background color of an element to Hex D7BFB6 is called "background". The background property can be set on classes, ids or directly on the HTML element.

```
.background, #background, body{  
background:#D7BFB6 }
```

If only the background color should be changed can be used:

```
.background{ background-color:#D7BFB6 }
```

This example shows the color as background, it is applied via the CSS property "background".

To optimize and compress your CSS code, you can use our [online CSS compressor and optimizer](#) based on csstidy. If you want to create a linear or radial gradient as background or border, check our [CSS Gradient Generator](#).



Hey! You found this booklet interesting? Support Converting Colors with the new Membership Option!

The pro membership hides all ads, plus gives you double the colors in the color bucket, and more awesome pro features!

**[Learn more, Memberships starting at \\$2.50/m!](#)**

**Follow me  
on Twitter!**

@ConvertingColor