

Converting Colors

Hex(D7BFC1)

Have a look what the booklet for
Hex(D7BFC1) contains.

Hex(D7BFC1)	3
<i>Conversions</i>	4
<i>Details</i>	6
<i>Harmonies</i>	11
<i>Previews</i>	23
<i>Color Blindness Simulation</i>	26
<i>CSS Examples</i>	29

Color

Hex(D7BFC1)

Conversions

Conversions Part 1

Format	Color
Hex	D7BFC1
RGB	215, 191, 193
RGB Percent	84%, 75%, 76%
CMY	0.1569, 0.2510, 0.2431
CMYK	0.00, 0.11, 0.10, 0.16
HSL	355°, 23%, 80%
HSV	355°, 11%, 84%
XYZ	56.2808, 55.5589, 58.2097
YIQ	198.4040, 13.6620, 5.7100

Conversions

Conversions Part 2

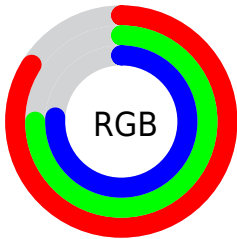
Format	Color
R _Y B	215, 191, 193
Decimal	14139329
CIE Lab	79.36, 8.82, 2.10
CIE LCh	79, 9.068, 13.367
Yxy	55.5589, 0.3310, 0.3267
Android (android.graphics.Color)	4292329409 (0xFFD7BFC1)
YUV	198.4040, -2.6642, 14.5547
Hunter-Lab	74.5379, 4.3375, 5.8745

Details

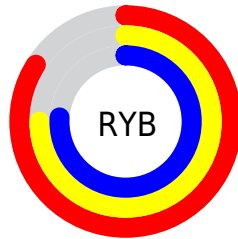
The Hex color **D7BFC1** is a light color, and the websafe version is hex **CCCCCC**. A complement of this color would be **BFD7D5**, and the grayscale version is **C6C6C6**.

A 20% lighter version of the original color is **FFF7F9**, and **A08A8C** is the 20% darker color. If you saturate the color by 10%, you get **D7AAAD**, and if you desaturate by 10%, it is **D7D5D5**.

Distribution



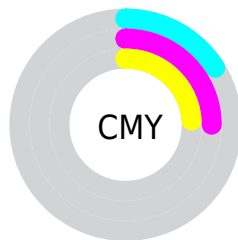
- Red (84%)
- Green (75%)
- Blue (76%)



- Red (84%)
- Yellow (75%)
- Blue (76%)



- Cyan (0%)
- Magenta (11%)
- Yellow (10%)
- Black (16%)



- Cyan (16%)
- Magenta (25%)
- Yellow (24%)

Brightness & Saturation Gradients

These gradients show how the Hex color D7BFC1 changes by changing the brightness by 10 percent. The first figure shows a shift by +10% for each color and the second figure -10%.

Similar to the brightness gradients but the following saturation gradients show a change of the Hex color D7BFC1 by changing the saturation by 10% instead.

 D7BFC1

FFFFFF

 FFF7F9

 D7BFC1

 BBA4A6

 A08A8C

 867072

 6C585A

 544042

 3C2A2C

 261618

 0F0000

 000000

 D7BFC1

 D7BFC1

 D7AAAD

 D7D5D5

 D7949A

 D7EAE8

 D77F86

 D7FFFC

 D76972

 D7FFFF

 D7545E

 D73E4B

 D72837

 D71323

 D70012

Harmonies

Analogous

The Analogous color harmony consists of three colors that are next to each other on the color wheel.



D3BFCA



D7BFC1



D6C0B9

Triad

The Triadic color harmony groups three colors that are evenly spaced from another and form a triangle on the color wheel.



D7BFC1



BEC8B8



B7C7D4

Complementary

The Complementary color scheme is a pair of colors which are on the opposite of each other on the color wheel.



D7BFC1



BFD7D5

Split Complementary

Split-complementary colors differ from the complementary color scheme. The scheme consists of three colors, the original color and two neighbors of the complement color.



B1C9D0



D7BFC1



B5C9BF

Square

The Square scheme is like the rectangle color scheme, but the four colors are evenly spaced on the color wheel.



D7BFC1



C8C5B4



B0CAC8



C1C4D5

Rectangle

The Rectangle color scheme consists of four colors that form a rectangle on the color wheel.



D7BFC1



D3C2B6



B0CAC8



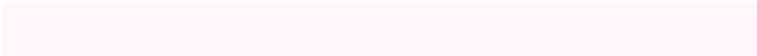
B4C8D3

Sweetspot

The Sweet Spot groups the original color and five complimentary colors.



D7BFC1



FFF7F8



D5BFD7



807A7B



000000



808080

Same Dimension

The Same Dimension uses a secret algorithm to generate beautiful new colors.



D7BFC1



FFDEE1



D7C9BF



6B6061



AB000E



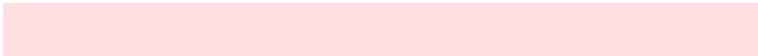
2B0004

Inverse Universe

The Inverse Universe completely reimagines the original color for something new.



D7BFC1



FFDEE1



BFCDD7



6B6061



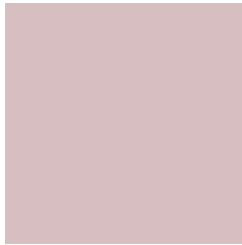
AB000E



2B0004

Previews

White Background



This preview shows how the Hex color D7BFC1 looks on a white background.

Color Contrast Check

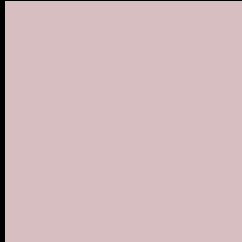
Large Text (above 18pt) WCAG AA × Fail

Any Text WCAG AA × Fail

Large Text (above 18pt) WCAG AAA × Fail

Any Text WCAG AAA × Fail

Black Background



This preview shows how the Hex color D7BFC1 looks on a black background.

Color Contrast Check

Large Text (above 18pt) WCAG AA ✓ Pass

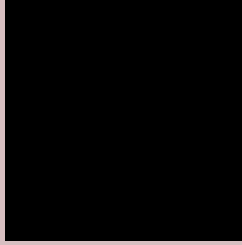
Any Text WCAG AA ✓ Pass

Large Text (above 18pt) WCAG AAA ✓ Pass

Any Text WCAG AAA ✓ Pass

If you want to check with other color combinations, try the [Color Contrast Checker](#).

Hex D7BFC1 Background



This preview shows how black text looks on a background with the Hex color D7BFC1.



This preview shows how white text looks on a background with the Hex color D7BFC1.

Color Blindness Simulation

Color vision deficiency is a very complex topic, and I could not describe the different causes any better than Wikipedia does, so if you want to learn more, you should check out their [article about color blindness](#).

Dichromacy



Original Color
D7BFC1

Protanopia
C8C4C4

Deuteranopia
D9BEC1



Tritanopia
D9BDCC

Trichromacy



Original Color
D7BFC1

Protanomaly
CDC2C3

Deuteranomaly
D8BEC1

Tritanomaly
D8BEC8

Monochromacy



Original Color
D7BFC1

Achromatopsia
C6C6C6

Achromatomaly
CCC3C4

CSS Examples

Text

The CSS property to change the color of the text to Hex D7BFC1 is called "color". The color property can be set on classes, ids or directly on the HTML element.

This example shows how text in the color #D7BFC1 looks like.

```
.text, #text, p{  
    color:#D7BFC1  
}
```

If you want to add a text shadow in that color use the text-shadow property, you can generate a text shadow directly with our [CSS Text Shadow Generator](#).

Here you see how black text with a 4 pixel #D7BFC1 colored shadow looks like.

```
.shadow{ text-shadow: 4px 4px 2px #D7BFC1  
}
```

Border

The CSS property to change the border of an element to Hex D7BFC1 is called "border". The border property can be set on classes, ids or directly on the HTML element.

This example shows the color as border, it can be applied via the CSS property "border" or "border-color".

```
.border, #border, table{ border:4px solid  
#D7BFC1 }
```

If only the border color should be changed use the property `border-color`.

```
.border{ border-color:#D7BFC1 }
```

If you want to add a box shadow in that color use:

Here you see how a box with a 4 pixel #D7BFC1 colored shadow looks like.

```
.boxshadow{ -moz-box-shadow:4px 4px 4px  
4px #D7BFC1; -webkit-box-shadow:4px 4px  
4px 4px #D7BFC1; box-shadow:4px 4px 4px  
4px #D7BFC1 }
```

Background

The CSS property to change the background color of an element to Hex D7BFC1 is called "background". The background property can be set on classes, ids or directly on the HTML element.

```
.background, #background, body{  
background:#D7BFC1 }
```

If only the background color should be changed can be used:

```
.background{ background-color:#D7BFC1 }
```

This example shows the color as background, it is applied via the CSS property "background".

To optimize and compress your CSS code, you can use our [online CSS compressor and optimizer](#) based on csstidy. If you want to create a linear or radial gradient as background or border, check our [CSS Gradient Generator](#).

Hey! You found this booklet interesting? Support Converting Colors with the new Membership Option!

The pro membership hides all ads, plus gives you double the colors in the color bucket, and more awesome pro features!

[Learn more, Memberships starting at \\$2.50/m!](#)

**Follow me
on Twitter!**

@ConvertingColor