

Converting Colors

Hex(D7BFC5)

Have a look what the booklet for
Hex(D7BFC5) contains.

Hex(D7BFC5)	3
<i>Conversions</i>	4
<i>Details</i>	6
<i>Harmonies</i>	11
<i>Previews</i>	23
<i>Color Blindness Simulation</i>	26
<i>CSS Examples</i>	29

Color

Hex(D7BFC5)

Conversions

Conversions Part 1

Format	Color
Hex	D7BFC5
RGB	215, 191, 197
RGB Percent	84%, 75%, 77%
CMY	0.1569, 0.2510, 0.2275
CMYK	0.00, 0.11, 0.08, 0.16
HSL	345°, 23%, 80%
HSV	345°, 11%, 84%
XYZ	56.7332, 55.7399, 60.5920
YIQ	198.8600, 12.3780, 6.9540

Conversions

Conversions Part 2

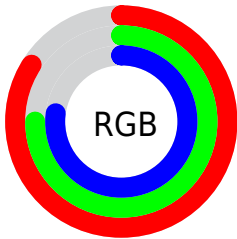
Format	Color
R_{YB}	215, 191, 197
Decimal	14139333
CIE Lab	79.47, 9.50, 0.09
CIE LCh	79, 9.499, 0.541
Yxy	55.7399, 0.3278, 0.3221
Android (android.graphics.Color)	4292329413 (0xFFD7BFC5)
YUV	198.8600, -0.9170, 14.1548
Hunter-Lab	74.6592, 4.9879, 4.1427

Details

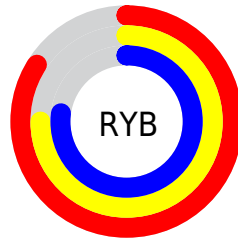
The Hex color **D7BFC5** is a light color, and the websafe version is hex **CCCCCC**. A complement of this color would be **BFD7D1**, and the grayscale version is **C7C7C7**.

A 20% lighter version of the original color is **FFF7FE**, and **A08A8F** is the 20% darker color. If you saturate the color by 10%, you get **D7AAB5**, and if you desaturate by 10%, it is **D7D5D5**.

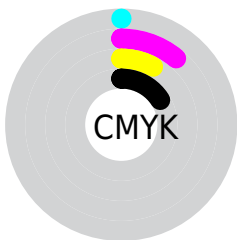
Distribution



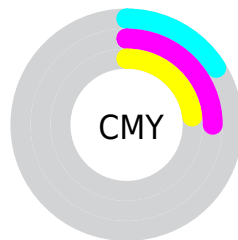
- Red (84%)
- Green (75%)
- Blue (77%)



- Red (84%)
- Yellow (75%)
- Blue (77%)



- Cyan (0%)
- Magenta (11%)
- Yellow (8%)
- Black (16%)



- Cyan (16%)
- Magenta (25%)
- Yellow (23%)

Brightness & Saturation Gradients

These gradients show how the Hex color D7BFC5 changes by changing the brightness by 10 percent. The first figure shows a shift by +10% for each color and the second figure -10%.

Similar to the brightness gradients but the following saturation gradients show a change of the Hex color D7BFC5 by changing the saturation by 10% instead.

 D7BFC5

FFFFFF

 FFF7FE

 D7BFC5

 BBA4AA

 A08A8F

 867076

 6C585D

 544046

 3D2A2F

 26161B

 110000

 000000

 D7BFC5

 D7BFC5

 D7AAB5

 D7D5D5

 D794A5

 D7EAE5

 D77F95

 D7FFF5

 D76985

 D7FFFF

 D75474

 D73E64

 D72854

 D71344

 D70036

Harmonies

Analogous

The Analogous color harmony consists of three colors that are next to each other on the color wheel.



D1C0CE



D7BFC5



D8C0BC

Triad

The Triadic color harmony groups three colors that are evenly spaced from another and form a triangle on the color wheel.



D7BFC5



C2C7B6



B3C8D4

Complementary

The Complementary color scheme is a pair of colors which are on the opposite of each other on the color wheel.



D7BFC5



BFD7D1

Split Complementary

Split-complementary colors differ from the complementary color scheme. The scheme consists of three colors, the original color and two neighbors of the complement color.



AFCACD



D7BFC5



B8C9BC

Square

The Square scheme is like the rectangle color scheme, but the four colors are evenly spaced on the color wheel.



D7BFC5



CCC4B3



B1CAC5



BCC6D6

Rectangle

The Rectangle color scheme consists of four colors that form a rectangle on the color wheel.



D7BFC5



D6C1B8



B1CAC5



B1C9D2

Sweetspot

The Sweet Spot groups the original color and five complimentary colors.



D7BFC5



FFF7F9



D1BFD7



807A7C



000000



808080

Same Dimension

The Same Dimension uses a secret algorithm to generate beautiful new colors.



D7BFC5



FFDEE6



D7C5BF



6B6063



AB002B



2B000B

Inverse Universe

The Inverse Universe completely reimagines the original color for something new.



D7BFC5



FFDEE6



BFD1D7



6B6063



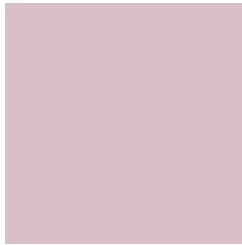
AB002B



2B000B

Previews

White Background



This preview shows how the Hex color D7BFC5 looks on a white background.

Color Contrast Check

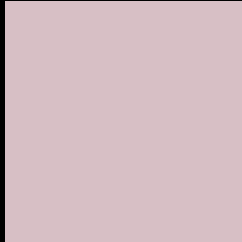
Large Text (above 18pt) WCAG AA × Fail

Any Text WCAG AA × Fail

Large Text (above 18pt) WCAG AAA × Fail

Any Text WCAG AAA × Fail

Black Background



This preview shows how the Hex color D7BFC5 looks on a black background.

Color Contrast Check

Large Text (above 18pt) WCAG AA ✓ Pass

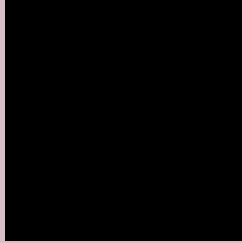
Any Text WCAG AA ✓ Pass

Large Text (above 18pt) WCAG AAA ✓ Pass

Any Text WCAG AAA ✓ Pass

If you want to check with other color combinations, try the [Color Contrast Checker](#).

Hex D7BFC5 Background



This preview shows how black text looks on a background with the Hex color D7BFC5.



This preview shows how white text looks on a background with the Hex color D7BFC5.

Color Blindness Simulation

Color vision deficiency is a very complex topic, and I could not describe the different causes any better than Wikipedia does, so if you want to learn more, you should check out their [article about color blindness](#).

Dichromacy



Original Color
D7BFC5

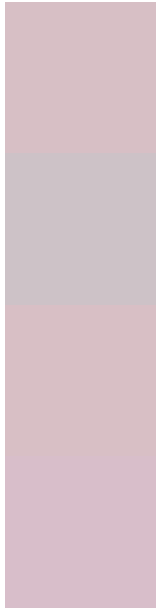
Protanopia
C8C4C8

Deuteranopia
D8BFC5



Tritanopia
D8BECD

Trichromacy



Original Color
D7BFC5

Protanomaly
CDC2C7

Deuteranomaly
D8BFC5

Tritanomaly
D8BECA

Monochromacy



Original Color
D7BFC5

Achromatopsia
C7C7C7

Achromatomaly
CDC4C6

CSS Examples

Text

The CSS property to change the color of the text to Hex D7BFC5 is called "color". The color property can be set on classes, ids or directly on the HTML element.

This example shows how text in the color #D7BFC5 looks like.

```
.text, #text, p{  
    color:#D7BFC5  
}
```

If you want to add a text shadow in that color use the text-shadow property, you can generate a text shadow directly with our [CSS Text Shadow Generator](#).

Here you see how black text with a 4 pixel #D7BFC5 colored shadow looks like.

```
.shadow{ text-shadow: 4px 4px 2px #D7BFC5
}
```

Border

The CSS property to change the border of an element to Hex D7BFC5 is called "border". The border property can be set on classes, ids or directly on the HTML element.

This example shows the color as border, it can be applied via the CSS property "border" or "border-color".

```
.border, #border, table{ border:4px solid
#D7BFC5 }
```

If only the border color should be changed use the property `border-color`.

```
.border{ border-color:#D7BFC5 }
```

If you want to add a box shadow in that color use:

Here you see how a box with a 4 pixel #D7BFC5 colored shadow looks like.

```
.boxshadow{ -moz-box-shadow:4px 4px 4px  
4px #D7BFC5; -webkit-box-shadow:4px 4px  
4px 4px #D7BFC5; box-shadow:4px 4px 4px  
4px #D7BFC5 }
```

Background

The CSS property to change the background color of an element to Hex D7BFC5 is called "background". The background property can be set on classes, ids or directly on the HTML element.

```
.background, #background, body{  
background:#D7BFC5 }
```

If only the background color should be changed can be used:

```
.background{ background-color:#D7BFC5 }
```

This example shows the color as background, it is applied via the CSS property "background".

To optimize and compress your CSS code, you can use our [online CSS compressor and optimizer](#) based on csstidy. If you want to create a linear or radial gradient as background or border, check our [CSS Gradient Generator](#).

Hey! You found this booklet interesting? Support Converting Colors with the new Membership Option!

The pro membership hides all ads, plus gives you double the colors in the color bucket, and more awesome pro features!

[Learn more, Memberships starting at \\$2.50/m!](#)

**Follow me
on Twitter!**

@ConvertingColor