

# Converting Colors

Hex(D7C0A3)

Have a look what the booklet for  
Hex(D7C0A3) contains.

<b>Hex(D7C0A3)</b> .....	3
<i><b>Conversions</b></i> .....	4
<i><b>Details</b></i> .....	6
<i><b>Harmonies</b></i> .....	11
<i><b>Previews</b></i> .....	23
<i><b>Color Blindness Simulation</b></i> .....	26
<i><b>CSS Examples</b></i> .....	29

# **Color**

**Hex(D7C0A3)**

# Conversions

## Conversions Part 1

<b>Format</b>	<b>Color</b>
Hex	D7C0A3
RGB	215, 192, 163
RGB Percent	84%, 75%, 64%
CMY	0.1569, 0.2471, 0.3608
CMYK	0.00, 0.11, 0.24, 0.16
HSL	33°, 39%, 74%
HSV	33°, 24%, 84%
XYZ	53.4848, 54.7907, 42.4070
YIQ	195.5710, 23.0170, -4.1430

# Conversions

## Conversions Part 2

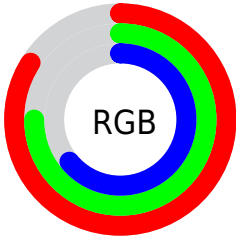
Format	Color
<a href="#">RYB</a>	<a href="#">204, 215, 163</a>
Decimal	<a href="#">14139555</a>
CIELab	<a href="#">78.92, 3.65, 17.60</a>
CIELCh	<a href="#">79, 17.974, 78.270</a>
Yxy	<a href="#">54.7907, 0.3550, 0.3636</a>
Android (android.graphics.Color)	<a href="#">4292329635 (0xFFD7C0A3)</a>
YUV	<a href="#">195.5710, -16.0575, 17.0392</a>
Hunter-Lab	<a href="#">74.0207, -0.5583, 17.8468</a>

# Details

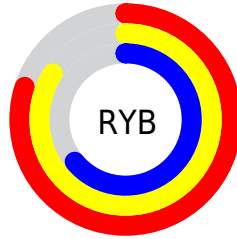
The Hex color **D7C0A3** is a light color, and the websafe version is hex **CCCC99**. A complement of this color would be **A3BAD7**, and the grayscale version is **C4C4C4**.

A 20% lighter version of the original color is **FFF8DA**, and **A08B6F** is the 20% darker color. If you saturate the color by 10%, you get **D7B68E**, and if you desaturate by 10%, it is **D7CAB9**.

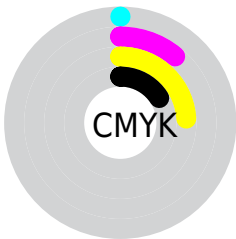
# Distribution



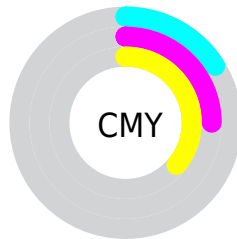
- Red (84%)
- Green (75%)
- Blue (64%)



- Red (80%)
- Yellow (84%)
- Blue (64%)



- Cyan (0%)
- Magenta (11%)
- Yellow (24%)
- Black (16%)



- Cyan (16%)
- Magenta (25%)
- Yellow (36%)

# Brightness & Saturation Gradients

These gradients show how the Hex color D7C0A3 changes by changing the brightness by 10 percent. The first figure shows a shift by +10% for each color and the second figure -10%.

Similar to the brightness gradients but the following saturation gradients show a change of the Hex color D7C0A3 by changing the saturation by 10% instead.



 D7C0A3

FFFFFF

 FFF8DA

 FFFFF6

 D7C0A3

 BBA589

 A08B6F

 857157

 6B593F

 524129

 3B2B14

 251700

 000000

 D7C0A3

 D7C0A3

 D7B68E

 D7CAB9

 D7AD78

 D7D3CE

 D7A363

 D7DDE3

 D79A4D

 D7E6F9

 D79037

 D7F0FF

 D78722

 D7F9FF

 D77D0C

 D7FFFF

 D77800

# Harmonies

## Analogous

The Analogous color harmony consists of three colors that are next to each other on the color wheel.



E3BBAB



D7C0A3



C6C6A4

# Triad

The Triadic color harmony groups three colors that are evenly spaced from another and form a triangle on the color wheel.



D7C0A3



98CDCD



D3BCDA

# Complementary

The Complementary color scheme is a pair of colors which are on the opposite of each other on the color wheel.



D7C0A3



A3BAD7

# Split Complementary

Split-complementary colors differ from the complementary color scheme. The scheme consists of three colors, the original color and two neighbors of the complement color.



BEC1E3



D7C0A3



9ACBDC

# Square

The Square scheme is like the rectangle color scheme, but the four colors are evenly spaced on the color wheel.



D7C0A3



A2CDBC



A9C7E4



E1B8CB

# Rectangle

The Rectangle color scheme consists of four colors that form a rectangle on the color wheel.



D7C0A3



B9C9A9



A9C7E4



CCBEDE

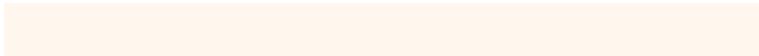


# Sweetspot

The Sweet Spot groups the original color and five complimentary colors.



D7C0A3



FFF7ED



D7A3BA



807B75



000000



808080



# Same Dimension

The Same Dimension uses a secret algorithm to generate beautiful new colors.



D7C0A3



FFDEB5



D4D7A3



6B6660



AB5F00



2B1800



# Inverse Universe

The Inverse Universe completely reimagines the original color for something new.



A3BAD7



B5D6FF



A6A3D7



60656B



004CAB

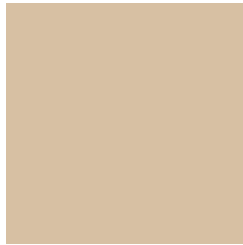


00132B



# Previews

## White Background



This preview shows how the Hex color D7C0A3 looks on a white background.

## Color Contrast Check

Large Text (above 18pt) WCAG AA × Fail

Any Text WCAG AA × Fail

Large Text (above 18pt) WCAG AAA × Fail

Any Text WCAG AAA × Fail

# Black Background



This preview shows how the Hex color D7C0A3 looks on a black background.

## Color Contrast Check

Large Text (above 18pt) WCAG AA ✓ Pass

Any Text WCAG AA ✓ Pass

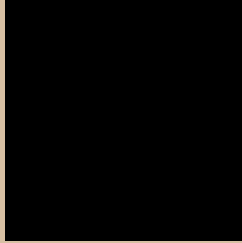
Large Text (above 18pt) WCAG AAA ✓ Pass

Any Text WCAG AAA ✓ Pass

If you want to check with other color combinations, try the [Color Contrast Checker](#).



## Hex D7C0A3 Background



This preview shows how black text looks on a background with the Hex color D7C0A3.

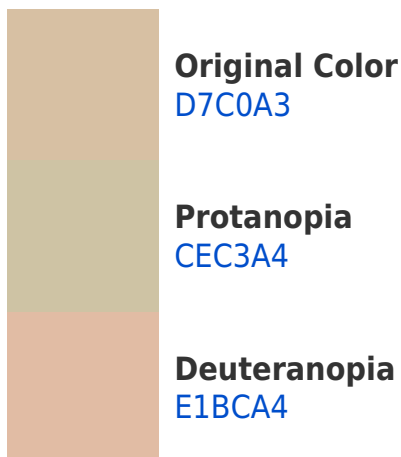


This preview shows how white text looks on a background with the Hex color D7C0A3.

# Color Blindness Simulation

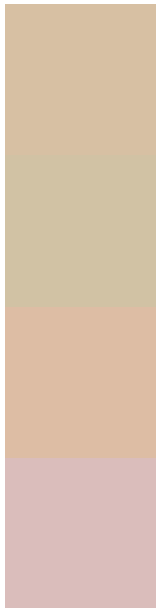
Color vision deficiency is a very complex topic, and I could not describe the different causes any better than Wikipedia does, so if you want to learn more, you should check out their [article about color blindness](#).

## Dichromacy





# Trichromacy



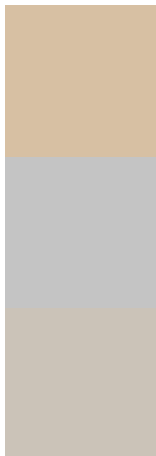
**Original Color**  
D7C0A3

**Protanomaly**  
D1C2A4

**Deuteranomaly**  
DDBDA4

**Tritanomaly**  
DABDBB

# Monochromacy



**Original Color**  
D7C0A3

**Achromatopsia**  
C4C4C4

**Achromatomaly**  
CBC3B8

# CSS Examples

## Text

The CSS property to change the color of the text to Hex D7C0A3 is called "color". The color property can be set on classes, ids or directly on the HTML element.

This example shows how text in the color #D7C0A3 looks like.

```
.text, #text, p{  
    color:#D7C0A3  
}
```

If you want to add a text shadow in that color use the text-shadow property, you can generate a text shadow directly with our [CSS Text Shadow Generator](#).

Here you see how black text with a 4 pixel #D7C0A3 colored shadow looks like.

```
.shadow{ text-shadow: 4px 4px 2px #D7C0A3
}
```

## Border

The CSS property to change the border of an element to Hex D7C0A3 is called "border". The border property can be set on classes, ids or directly on the HTML element.

This example shows the color as border, it can be applied via the CSS property "border" or "border-color".

```
.border, #border, table{ border:4px solid
#D7C0A3 }
```

If only the border color should be changed use the property `border-color`.

```
.border{ border-color:#D7C0A3 }
```

If you want to add a box shadow in that color use:

Here you see how a box with a 4 pixel #D7C0A3 colored shadow looks like.

```
.boxshadow{ -moz-box-shadow:4px 4px 4px  
4px #D7C0A3; -webkit-box-shadow:4px 4px  
4px 4px #D7C0A3; box-shadow:4px 4px 4px  
4px #D7C0A3 }
```

# Background

The CSS property to change the background color of an element to Hex D7C0A3 is called "background". The background property can be set on classes, ids or directly on the HTML element.

```
.background, #background, body{  
background:#D7C0A3 }
```

If only the background color should be changed can be used:

```
.background{ background-color:#D7C0A3 }
```

This example shows the color as background, it is applied via the CSS property "background".

To optimize and compress your CSS code, you can use our [online CSS compressor and optimizer](#) based on csstidy. If you want to create a linear or radial gradient as background or border, check our [CSS Gradient Generator](#).



Hey! You found this booklet interesting? Support Converting Colors with the new Membership Option!

The pro membership hides all ads, plus gives you double the colors in the color bucket, and more awesome pro features!

**[Learn more, Memberships starting at \\$2.50/m!](#)**

**Follow me  
on Twitter!**

@ConvertingColor