

Converting Colors

Hex(D7C0D0)

Have a look what the booklet for
Hex(D7C0D0) contains.

Hex(D7C0D0)	3
<i>Conversions</i>	4
<i>Details</i>	6
<i>Harmonies</i>	11
<i>Previews</i>	23
<i>Color Blindness Simulation</i>	26
<i>CSS Examples</i>	29

Color

Hex(D7C0D0)

Conversions

Conversions Part 1

Format	Color
Hex	D7C0D0
RGB	215, 192, 208
RGB Percent	84%, 75%, 82%
CMY	0.1569, 0.2471, 0.1843
CMYK	0.00, 0.11, 0.03, 0.16
HSL	318°, 22%, 80%
HSV	318°, 11%, 84%
XYZ	58.2591, 56.7004, 67.5482
YIQ	200.7010, 8.5720, 9.8520

Conversions

Conversions Part 2

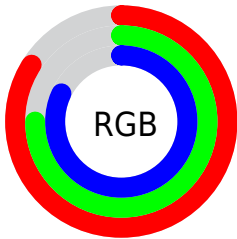
Format	Color
R _Y B	215, 192, 208
Decimal	14139600
CIE Lab	80.01, 10.89, -5.04
CIE LCh	80, 11.999, 335.169
Yxy	56.7004, 0.3192, 0.3107
Android (android.graphics.Color)	4292329680 (0xFFD7C0D0)
YUV	200.7010, 3.5984, 12.5402
Hunter-Lab	75.2997, 6.3305, -0.4768

Details

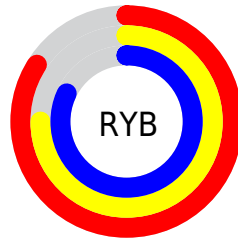
The Hex color **D7C0D0** is a light color, and the websafe version is hex **CCCCCC**. A complement of this color would be **C0D7C7**, and the grayscale version is **C9C9C9**.

A 20% lighter version of the original color is **FFF8FF**, and **A08B9A** is the 20% darker color. If you saturate the color by 10%, you get **D7ABC9**, and if you desaturate by 10%, it is **D7D6D7**.

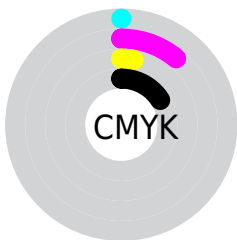
Distribution



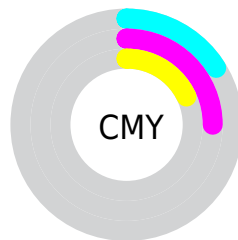
- Red (84%)
- Green (75%)
- Blue (82%)



- Red (84%)
- Yellow (75%)
- Blue (82%)



- Cyan (0%)
- Magenta (11%)
- Yellow (3%)
- Black (16%)



- Cyan (16%)
- Magenta (25%)
- Yellow (18%)

Brightness & Saturation Gradients

These gradients show how the Hex color D7C0D0 changes by changing the brightness by 10 percent. The first figure shows a shift by +10% for each color and the second figure -10%.

Similar to the brightness gradients but the following saturation gradients show a change of the Hex color D7C0D0 by changing the saturation by 10% instead.

 D7C0D0

FFFFFF

 FFF8FF

 D7C0D0

 BBA5B4

 A08B9A

 867180

 6D5967

 54414F

 3D2B38

 271622

 14000D

 000000

 D7C0D0

 D7C0D0

 D7ABC9

 D7D6D7

 D795C3

 D7EBDD

 D77FBC

 D7FFE4

 D76AB6

 D7FFEA

 D755AF

 D7FFF1

 D73FA9

 D7FFF7

 D72AA2

 D7FFFE

 D7149C

 D7FFFF

 D70096

Harmonies

Analogous

The Analogous color harmony consists of three colors that are next to each other on the color wheel.



CBC3D9



D7C0D0



DEBFC5

Triad

The Triadic color harmony groups three colors that are evenly spaced from another and form a triangle on the color wheel.



D7C0D0



CEC6B0



ABCCD3

Complementary

The Complementary color scheme is a pair of colors which are on the opposite of each other on the color wheel.



D7C0D0



C0D7C7

Split Complementary

Split-complementary colors differ from the complementary color scheme. The scheme consists of three colors, the original color and two neighbors of the complement color.



ACCDC8



D7C0D0



C1CAB4

Square

The Square scheme is like the rectangle color scheme, but the four colors are evenly spaced on the color wheel.



D7C0D0



D8C3B2



B5CCBD



B1CADA

Rectangle

The Rectangle color scheme consists of four colors that form a rectangle on the color wheel.



D7C0D0



DFBFBD



B5CCBD



AACDCF

Sweetspot

The Sweet Spot groups the original color and five complimentary colors.



D7C0D0



FFF7FD



C7C0D7



807A7E



000000



808080

Same Dimension

The Same Dimension uses a secret algorithm to generate beautiful new colors.



D7C0D0



FFDEF5



D7C0C5



6B6068



AB0077



2B001E

Inverse Universe

The Inverse Universe completely reimagines the original color for something new.



D7C0D0



FFDEF5



C0D7D2



6B6068



AB0077



2B001E

Previews

White Background



This preview shows how the Hex color D7C0D0 looks on a white background.

Color Contrast Check

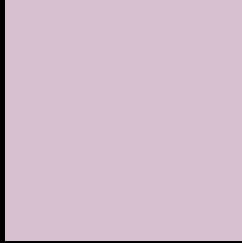
Large Text (above 18pt) WCAG AA × Fail

Any Text WCAG AA × Fail

Large Text (above 18pt) WCAG AAA × Fail

Any Text WCAG AAA × Fail

Black Background



This preview shows how the Hex color D7C0D0 looks on a black background.

Color Contrast Check

Large Text (above 18pt) WCAG AA ✓ Pass

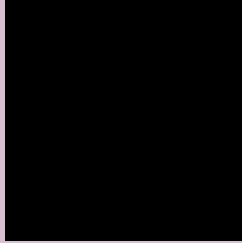
Any Text WCAG AA ✓ Pass

Large Text (above 18pt) WCAG AAA ✓ Pass

Any Text WCAG AAA ✓ Pass

If you want to check with other color combinations, try the [Color Contrast Checker](#).

Hex D7C0D0 Background



This preview shows how black text looks on a background with the Hex color D7C0D0.

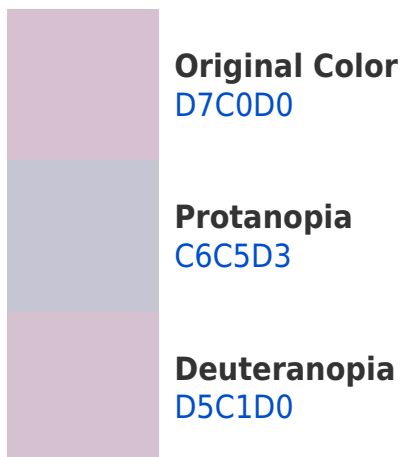


This preview shows how white text looks on a background with the Hex color D7C0D0.

Color Blindness Simulation

Color vision deficiency is a very complex topic, and I could not describe the different causes any better than Wikipedia does, so if you want to learn more, you should check out their [article about color blindness](#).

Dichromacy





Tritanopia
D7C0CF

Trichromacy



Original Color
D7C0D0

Protanomaly
CCC3D2

Deuteranomaly
D6C1D0

Tritanomaly
D7C0CF

Monochromacy



Original Color
D7C0D0

Achromatopsia
C9C9C9

Achromatomaly
CEC6CC

CSS Examples

Text

The CSS property to change the color of the text to Hex D7C0D0 is called "color". The color property can be set on classes, ids or directly on the HTML element.

This example shows how text in the color #D7C0D0 looks like.

```
.text, #text, p{  
    color:#D7C0D0  
}
```

If you want to add a text shadow in that color use the text-shadow property, you can generate a text shadow directly with our [CSS Text Shadow Generator](#).

Here you see how black text with a 4 pixel #D7C0D0 colored shadow looks like.

```
.shadow{ text-shadow: 4px 4px 2px #D7C0D0
}
```

Border

The CSS property to change the border of an element to Hex D7C0D0 is called "border". The border property can be set on classes, ids or directly on the HTML element.

This example shows the color as border, it can be applied via the CSS property "border" or "border-color".

```
.border, #border, table{ border:4px solid
#D7C0D0 }
```

If only the border color should be changed use the property `border-color`.

```
.border{ border-color:#D7C0D0 }
```

If you want to add a box shadow in that color use:

Here you see how a box with a 4 pixel #D7C0D0 colored shadow looks like.

```
.boxshadow{ -moz-box-shadow:4px 4px 4px  
4px #D7C0D0; -webkit-box-shadow:4px 4px  
4px 4px #D7C0D0; box-shadow:4px 4px 4px  
4px #D7C0D0 }
```

Background

The CSS property to change the background color of an element to Hex D7C0D0 is called "background". The background property can be set on classes, ids or directly on the HTML element.

```
.background, #background, body{  
background:#D7C0D0 }
```

If only the background color should be changed can be used:

```
.background{ background-color:#D7C0D0 }
```

This example shows the color as background, it is applied via the CSS property "background".

To optimize and compress your CSS code, you can use our [online CSS compressor and optimizer](#) based on csstidy. If you want to create a linear or radial gradient as background or border, check our [CSS Gradient Generator](#).

Hey! You found this booklet interesting? Support Converting Colors with the new Membership Option!

The pro membership hides all ads, plus gives you double the colors in the color bucket, and more awesome pro features!

[Learn more, Memberships starting at \\$2.50/m!](#)

**Follow me
on Twitter!**

@ConvertingColor