

# Converting Colors

Hex(D7C1C4)

Have a look what the booklet for  
Hex(D7C1C4) contains.

<b>Hex(D7C1C4)</b> .....	3
<b><i>Conversions</i></b> .....	4
<b><i>Details</i></b> .....	6
<b><i>Harmonies</i></b> .....	11
<b><i>Previews</i></b> .....	23
<b><i>Color Blindness Simulation</i></b> .....	26
<b><i>CSS Examples</i></b> .....	29

# **Color**

**Hex(D7C1C4)**

# Conversions

## Conversions Part 1

<b>Format</b>	<b>Color</b>
Hex	D7C1C4
RGB	215, 193, 196
RGB Percent	84%, 76%, 77%
CMY	0.1569, 0.2431, 0.2314
CMYK	0.00, 0.10, 0.09, 0.16
HSL	352°, 22%, 80%
HSV	352°, 10%, 84%
XYZ	57.0581, 56.5725, 60.1369
YIQ	199.9200, 12.1490, 5.5970

# Conversions

## Conversions Part 2

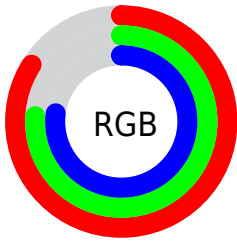
<b>Format</b>	<b>Color</b>
R <sub>Y</sub> B	215, 193, 196
Decimal	14139844
CIE Lab	79.94, 8.26, 1.32
CIE LCh	80, 8.366, 9.066
Yxy	56.5725, 0.3284, 0.3256
Android (android.graphics.Color)	4292329924 (0xFFD7C1C4)
YUV	199.9200, -1.9326, 13.2252
Hunter-Lab	75.2147, 3.7849, 5.2458

# Details

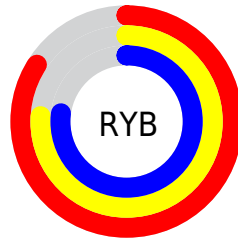
The Hex color **D7C1C4** is a light color, and the websafe version is hex **CCCCCC**. A complement of this color would be **C1D7D4**, and the grayscale version is **C8C8C8**.

A 20% lighter version of the original color is **FFF9FD**, and **A08B8E** is the 20% darker color. If you saturate the color by 10%, you get **D7ACB1**, and if you desaturate by 10%, it is **D7D7D7**.

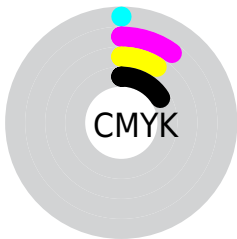
# Distribution



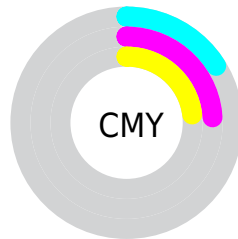
- Red (84%)
- Green (76%)
- Blue (77%)



- Red (84%)
- Yellow (76%)
- Blue (77%)



- Cyan (0%)
- Magenta (10%)
- Yellow (9%)
- Black (16%)



- Cyan (16%)
- Magenta (24%)
- Yellow (23%)

# Brightness & Saturation Gradients

These gradients show how the Hex color D7C1C4 changes by changing the brightness by 10 percent. The first figure shows a shift by +10% for each color and the second figure -10%.

Similar to the brightness gradients but the following saturation gradients show a change of the Hex color D7C1C4 by changing the saturation by 10% instead.



 D7C1C4

FFFFFF

 FFF9FD

 D7C1C4

 BBA6A9

 A08B8E

 867275

 6C595C

 544245

 3D2C2E

 27171A

 130000

 000000

 D7C1C4

 D7C1C4

 D7ACB1

 D7D7D7

 D7969F

 D7ECE9

 D7818C

 D7FFFC

 D76B7A

 D7FFFF

 D75667

 D74055

 D72A42

 D7152F

 D7001D

# Harmonies

## Analogous

The Analogous color harmony consists of three colors that are next to each other on the color wheel.



D3C2CC



D7C1C4



D7C2BD

# Triad

The Triadic color harmony groups three colors that are evenly spaced from another and form a triangle on the color wheel.



D7C1C4



C1C9BA



B9C8D4

# Complementary

The Complementary color scheme is a pair of colors which are on the opposite of each other on the color wheel.



D7C1C4



C1D7D4

# Split Complementary

Split-complementary colors differ from the complementary color scheme. The scheme consists of three colors, the original color and two neighbors of the complement color.



B4CAD0



D7C1C4



B9CAC0

# Square

The Square scheme is like the rectangle color scheme, but the four colors are evenly spaced on the color wheel.



D7C1C4



CAC6B7



B4CBC8



C1C6D5

# Rectangle

The Rectangle color scheme consists of four colors that form a rectangle on the color wheel.



D7C1C4



D4C3B9



B4CBC8



B6C9D3



# Sweetspot

The Sweet Spot groups the original color and five complimentary colors.



D7C1C4



FFF7F8



D4C1D7



807A7B



000000



808080



# Same Dimension

The Same Dimension uses a secret algorithm to generate beautiful new colors.



D7C1C4



FFE0E5



D7C9C1



6B6062



AB0017



2B0006



# Inverse Universe

The Inverse Universe completely reimagines the original color for something new.



D7C1C4



FFE0E5



C1CFD7



6B6062



AB0017

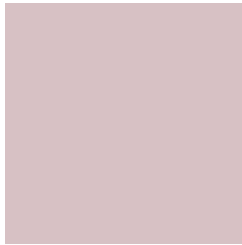


2B0006



# Previews

## White Background



This preview shows how the Hex color D7C1C4 looks on a white background.

## Color Contrast Check

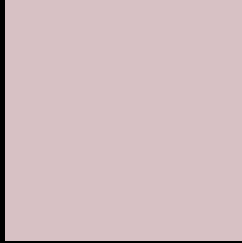
Large Text (above 18pt) WCAG AA × Fail

Any Text WCAG AA × Fail

Large Text (above 18pt) WCAG AAA × Fail

Any Text WCAG AAA × Fail

# Black Background



This preview shows how the Hex color D7C1C4 looks on a black background.

## Color Contrast Check

Large Text (above 18pt) WCAG AA ✓ Pass

Any Text WCAG AA ✓ Pass

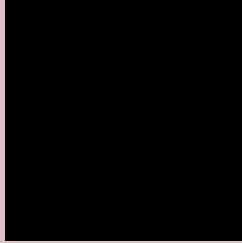
Large Text (above 18pt) WCAG AAA ✓ Pass

Any Text WCAG AAA ✓ Pass

If you want to check with other color combinations, try the [Color Contrast Checker](#).



## Hex D7C1C4 Background



This preview shows how black text looks on a background with the Hex color D7C1C4.



This preview shows how white text looks on a background with the Hex color D7C1C4.

# Color Blindness Simulation

Color vision deficiency is a very complex topic, and I could not describe the different causes any better than Wikipedia does, so if you want to learn more, you should check out their [article about color blindness](#).

## Dichromacy



**Original Color**  
D7C1C4

**Protanopia**  
CAC5C6

**Deuteranopia**  
DAC0C4



**Tritanopia**  
D8BFCE

# Trichromacy



**Original Color**  
D7C1C4

**Protanomaly**  
CFC4C5

**Deuteranomaly**  
D9C0C4

**Tritanomaly**  
D8C0CA

# Monochromacy



**Original Color**  
D7C1C4

**Achromatopsia**  
C8C8C8

**Achromatomaly**  
CDC5C7

# CSS Examples

## Text

The CSS property to change the color of the text to Hex D7C1C4 is called "color". The color property can be set on classes, ids or directly on the HTML element.

This example shows how text in the color #D7C1C4 looks like.

```
.text, #text, p{  
    color:#D7C1C4  
}
```

If you want to add a text shadow in that color use the text-shadow property, you can generate a text shadow directly with our [CSS Text Shadow Generator](#).

Here you see how black text with a 4 pixel #D7C1C4 colored shadow looks like.

```
.shadow{ text-shadow: 4px 4px 2px #D7C1C4
}
```

## Border

The CSS property to change the border of an element to Hex D7C1C4 is called "border". The border property can be set on classes, ids or directly on the HTML element.

This example shows the color as border, it can be applied via the CSS property "border" or "border-color".

```
.border, #border, table{ border:4px solid
#D7C1C4 }
```

If only the border color should be changed use the property `border-color`.

```
.border{ border-color:#D7C1C4 }
```

If you want to add a box shadow in that color use:

Here you see how a box with a 4 pixel #D7C1C4 colored shadow looks like.

```
.boxshadow{ -moz-box-shadow:4px 4px 4px  
4px #D7C1C4; -webkit-box-shadow:4px 4px  
4px 4px #D7C1C4; box-shadow:4px 4px 4px  
4px #D7C1C4 }
```

# Background

The CSS property to change the background color of an element to Hex D7C1C4 is called "background". The background property can be set on classes, ids or directly on the HTML element.

```
.background, #background, body{  
background:#D7C1C4 }
```

If only the background color should be changed can be used:

```
.background{ background-color:#D7C1C4 }
```

This example shows the color as background, it is applied via the CSS property "background".

To optimize and compress your CSS code, you can use our [online CSS compressor and optimizer](#) based on csstidy. If you want to create a linear or radial gradient as background or border, check our [CSS Gradient Generator](#).



Hey! You found this booklet interesting? Support Converting Colors with the new Membership Option!

The pro membership hides all ads, plus gives you double the colors in the color bucket, and more awesome pro features!

**[Learn more, Memberships starting at \\$2.50/m!](#)**

**Follow me  
on Twitter!**

@ConvertingColor