

Converting Colors

Hex(D7C2C8)

Have a look what the booklet for
Hex(D7C2C8) contains.

Hex(D7C2C8)	3
<i>Conversions</i>	4
<i>Details</i>	6
<i>Harmonies</i>	11
<i>Previews</i>	23
<i>Color Blindness Simulation</i>	26
<i>CSS Examples</i>	29

Color

Hex(D7C2C8)

Conversions

Conversions Part 1

Format	Color
Hex	D7C2C8
RGB	215, 194, 200
RGB Percent	84%, 76%, 78%
CMY	0.1569, 0.2392, 0.2157
CMYK	0.00, 0.10, 0.07, 0.16
HSL	343°, 21%, 80%
HSV	343°, 10%, 84%
XYZ	57.7414, 57.2008, 62.6411
YIQ	200.9630, 10.5900, 6.3180

Conversions

Conversions Part 2

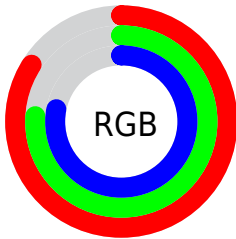
Format	Color
R _Y B	215, 194, 200
Decimal	14140104
CIE Lab	80.29, 8.41, -0.32
CIE LCh	80, 8.420, 357.832
Yxy	57.2008, 0.3252, 0.3221
Android (android.graphics.Color)	4292330184 (0xFFD7C2C8)
YUV	200.9630, -0.4748, 12.3104
Hunter-Lab	75.6312, 3.9231, 3.8352

Details

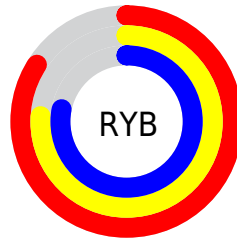
The Hex color **D7C2C8** is a light color, and the websafe version is hex **CCCCCC**. A complement of this color would be **C2D7D1**, and the grayscale version is **C9C9C9**.

A 20% lighter version of the original color is **FFFBFF**, and **A08C92** is the 20% darker color. If you saturate the color by 10%, you get **D7ADB9**, and if you desaturate by 10%, it is **D7D8D7**.

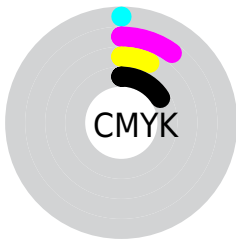
Distribution



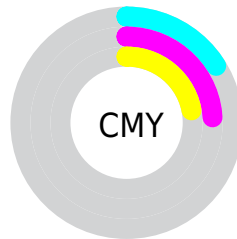
- Red (84%)
- Green (76%)
- Blue (78%)



- Red (84%)
- Yellow (76%)
- Blue (78%)



- Cyan (0%)
- Magenta (10%)
- Yellow (7%)
- Black (16%)



- Cyan (16%)
- Magenta (24%)
- Yellow (22%)

Brightness & Saturation Gradients

These gradients show how the Hex color D7C2C8 changes by changing the brightness by 10 percent. The first figure shows a shift by +10% for each color and the second figure -10%.

Similar to the brightness gradients but the following saturation gradients show a change of the Hex color D7C2C8 by changing the saturation by 10% instead.

 D7C2C8

FFFFFF

 FFFBFF

 D7C2C8

 BBA7AD

 A08C92

 867378

 6D5A60

 544348

 3D2D32

 27181D

 140002

 000000

 D7C2C8

 D7C2C8

 D7ADB9

 D7D8D7

 D797A9

 D7EDE7

 D7829A

 D7FFF6

 D76C8B

 D7FFFF

 D7567B

 D7416C

 D72B5D

 D7164D

 D7003E

Harmonies

Analogous

The Analogous color harmony consists of three colors that are next to each other on the color wheel.



D1C3D0



D7C2C8



D8C2C0

Triad

The Triadic color harmony groups three colors that are evenly spaced from another and form a triangle on the color wheel.



D7C2C8



C6C9B9



B7CAD4

Complementary

The Complementary color scheme is a pair of colors which are on the opposite of each other on the color wheel.



D7C2C8



C2D7D1

Split Complementary

Split-complementary colors differ from the complementary color scheme. The scheme consists of three colors, the original color and two neighbors of the complement color.



B4CCCE



D7C2C8



BDCBBF

Square

The Square scheme is like the rectangle color scheme, but the four colors are evenly spaced on the color wheel.



D7C2C8



CFC6B8



B6CCC6



BFC8D7

Rectangle

The Rectangle color scheme consists of four colors that form a rectangle on the color wheel.



D7C2C8



D7C3BC



B6CCC6



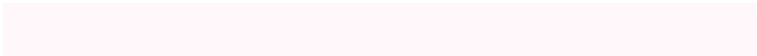
B5CBD2

Sweetspot

The Sweet Spot groups the original color and five complimentary colors.



D7C2C8



FFF7FA



D1C2D7



807A7C



000000



808080

Same Dimension

The Same Dimension uses a secret algorithm to generate beautiful new colors.



D7C2C8



FFE0E9



D7C6C2



6B6063



AB0031



2B000C

Inverse Universe

The Inverse Universe completely reimagines the original color for something new.



D7C2C8



FFE0E9



C2D3D7



6B6063



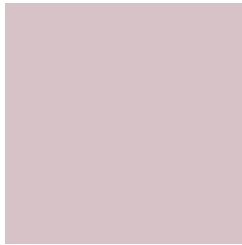
AB0031



2B000C

Previews

White Background



This preview shows how the Hex color D7C2C8 looks on a white background.

Color Contrast Check

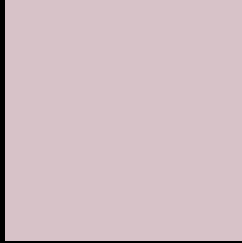
Large Text (above 18pt) WCAG AA × Fail

Any Text WCAG AA × Fail

Large Text (above 18pt) WCAG AAA × Fail

Any Text WCAG AAA × Fail

Black Background



This preview shows how the Hex color D7C2C8 looks on a black background.

Color Contrast Check

Large Text (above 18pt) WCAG AA ✓ Pass

Any Text WCAG AA ✓ Pass

Large Text (above 18pt) WCAG AAA ✓ Pass

Any Text WCAG AAA ✓ Pass

If you want to check with other color combinations, try the [Color Contrast Checker](#).

Hex D7C2C8 Background



This preview shows how black text looks on a background with the Hex color D7C2C8.

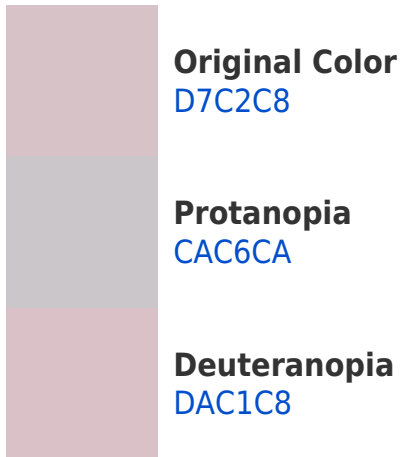


This preview shows how white text looks on a background with the Hex color D7C2C8.

Color Blindness Simulation

Color vision deficiency is a very complex topic, and I could not describe the different causes any better than Wikipedia does, so if you want to learn more, you should check out their [article about color blindness](#).

Dichromacy





Tritanopia
D8C1D0

Trichromacy



Original Color
D7C2C8

Protanomaly
CFC5C9

Deuteranomaly
D9C1C8

Tritanomaly
D8C1CD

Monochromacy



Original Color
D7C2C8

Achromatopsia
C9C9C9

Achromatomaly
CEC6C9

CSS Examples

Text

The CSS property to change the color of the text to Hex D7C2C8 is called "color". The color property can be set on classes, ids or directly on the HTML element.

This example shows how text in the color #D7C2C8 looks like.

```
.text, #text, p{  
    color:#D7C2C8  
}
```

If you want to add a text shadow in that color use the text-shadow property, you can generate a text shadow directly with our [CSS Text Shadow Generator](#).

Here you see how black text with a 4 pixel #D7C2C8 colored shadow looks like.

```
.shadow{ text-shadow: 4px 4px 2px #D7C2C8
}
```

Border

The CSS property to change the border of an element to Hex D7C2C8 is called "border". The border property can be set on classes, ids or directly on the HTML element.

This example shows the color as border, it can be applied via the CSS property "border" or "border-color".

```
.border, #border, table{ border:4px solid
#D7C2C8 }
```

If only the border color should be changed use the property `border-color`.

```
.border{ border-color:#D7C2C8 }
```

If you want to add a box shadow in that color use:

Here you see how a box with a 4 pixel #D7C2C8 colored shadow looks like.

```
.boxshadow{ -moz-box-shadow:4px 4px 4px  
4px #D7C2C8; -webkit-box-shadow:4px 4px  
4px 4px #D7C2C8; box-shadow:4px 4px 4px  
4px #D7C2C8 }
```

Background

The CSS property to change the background color of an element to Hex D7C2C8 is called "background". The background property can be set on classes, ids or directly on the HTML element.

```
.background, #background, body{  
background:#D7C2C8 }
```

If only the background color should be changed can be used:

```
.background{ background-color:#D7C2C8 }
```

This example shows the color as background, it is applied via the CSS property "background".

To optimize and compress your CSS code, you can use our [online CSS compressor and optimizer](#) based on csstidy. If you want to create a linear or radial gradient as background or border, check our [CSS Gradient Generator](#).

Hey! You found this booklet interesting? Support Converting Colors with the new Membership Option!

The pro membership hides all ads, plus gives you double the colors in the color bucket, and more awesome pro features!

[Learn more, Memberships starting at \\$2.50/m!](#)

**Follow me
on Twitter!**

@ConvertingColor