

Converting Colors

Hex(D7C8BF)

Have a look what the booklet for
Hex(D7C8BF) contains.

Hex(D7C8BF)	3
<i>Conversions</i>	4
<i>Details</i>	6
<i>Harmonies</i>	11
<i>Previews</i>	23
<i>Color Blindness Simulation</i>	26
<i>CSS Examples</i>	29

Color

Hex(D7C8BF)

Conversions

Conversions Part 1

Format	Color
Hex	D7C8BF
RGB	215, 200, 191
RGB Percent	84%, 78%, 75%
CMY	0.1569, 0.2157, 0.2510
CMYK	0.00, 0.07, 0.11, 0.16
HSL	22°, 23%, 80%
HSV	22°, 11%, 84%
XYZ	58.0826, 59.5172, 57.7169
YIQ	203.4590, 11.8290, 0.3810

Conversions

Conversions Part 2

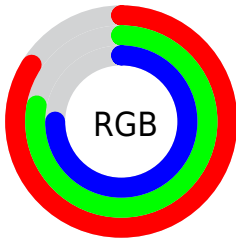
Format	Color
R_{YB}	215, 205, 191
Decimal	14141631
CIE Lab	81.58, 3.72, 6.37
CIE LCh	82, 7.376, 59.738
Yxy	59.5172, 0.3313, 0.3395
Android (android.graphics.Color)	4292331711 (0xFFD7C8BF)
YUV	203.4590, -6.1423, 10.1215
Hunter-Lab	77.1474, -0.6192, 9.6461

Details

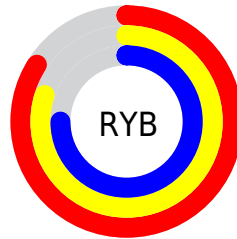
The Hex color **D7C8BF** is a light color, and the websafe version is hex **CCCCCC**. A complement of this color would be **BFCED7**, and the grayscale version is **CCCCCC**.

A 20% lighter version of the original color is **FFFFFF7**, and **A0928A** is the 20% darker color. If you saturate the color by 10%, you get **D7BBAA**, and if you desaturate by 10%, it is **D7D5D5**.

Distribution



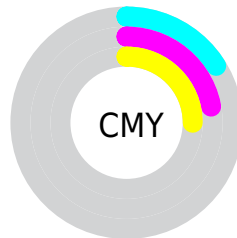
- Red (84%)
- Green (78%)
- Blue (75%)



- Red (84%)
- Yellow (80%)
- Blue (75%)



- Cyan (0%)
- Magenta (7%)
- Yellow (11%)
- Black (16%)



- Cyan (16%)
- Magenta (22%)
- Yellow (25%)

Brightness & Saturation Gradients

These gradients show how the Hex color D7C8BF changes by changing the brightness by 10 percent. The first figure shows a shift by +10% for each color and the second figure -10%.

Similar to the brightness gradients but the following saturation gradients show a change of the Hex color D7C8BF by changing the saturation by 10% instead.

 D7C8BF

FFFFFFF

 FFFFFF7

 D7C8BF

 BBADA4

 A0928A

 867870

 6C6058

 544841

 3D322B

 271D16

 110300

 000000

 D7C8BF

 D7C8BF

 D7BBAA

 D7D5D5

 D7AD94

 D7E3EA

 D7A07F

 D7F0FF

 D79269

 D7FEFF

 D78554

 D7FFFF

 D7773E

 D76A28

 D75C13

 D75100

Harmonies

Analogous

The Analogous color harmony consists of three colors that are next to each other on the color wheel.



DAC7C4



D7C8BF



D1CABD

Triad

The Triadic color harmony groups three colors that are evenly spaced from another and form a triangle on the color wheel.



D7C8BF



BCCFCA



CCC9D7

Complementary

The Complementary color scheme is a pair of colors which are on the opposite of each other on the color wheel.



D7C8BF



BFCED7

Split Complementary

Split-complementary colors differ from the complementary color scheme. The scheme consists of three colors, the original color and two neighbors of the complement color.



C4CBD8



D7C8BF



BACFD1

Square

The Square scheme is like the rectangle color scheme, but the four colors are evenly spaced on the color wheel.



D7C8BF



C1CEC4



BDCDD6



D4C7D2

Rectangle

The Rectangle color scheme consists of four colors that form a rectangle on the color wheel.



D7C8BF



CCCCBE



BDCDD6



C9CAD8

Sweetspot

The Sweet Spot groups the original color and five complimentary colors.



D7C8BF



FFFAF7



D7BFCE



807C7A



000000



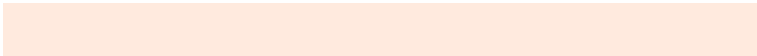
808080

Same Dimension

The Same Dimension uses a secret algorithm to generate beautiful new colors.



D7C8BF



FFEADE



D7D4BF



6B6460



AB4000



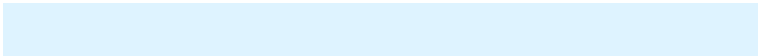
2B1000

Inverse Universe

The Inverse Universe completely reimagines the original color for something new.



BFCED7



DEF3FF



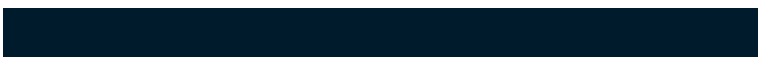
BFC2D7



60676B



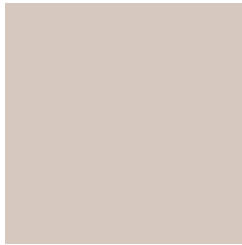
006BAB



001B2B

Previews

White Background



This preview shows how the Hex color D7C8BF looks on a white background.

Color Contrast Check

Large Text (above 18pt) WCAG AA × Fail

Any Text WCAG AA × Fail

Large Text (above 18pt) WCAG AAA × Fail

Any Text WCAG AAA × Fail

Black Background



This preview shows how the Hex color D7C8BF looks on a black background.

Color Contrast Check

Large Text (above 18pt) WCAG AA ✓ Pass

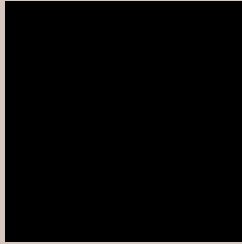
Any Text WCAG AA ✓ Pass

Large Text (above 18pt) WCAG AAA ✓ Pass

Any Text WCAG AAA ✓ Pass

If you want to check with other color combinations, try the [Color Contrast Checker](#).

Hex D7C8BF Background



This preview shows how black text looks on a background with the Hex color D7C8BF.

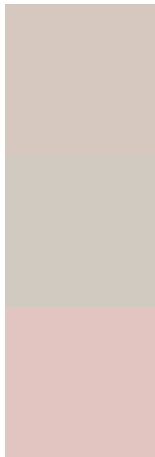


This preview shows how white text looks on a background with the Hex color D7C8BF.

Color Blindness Simulation

Color vision deficiency is a very complex topic, and I could not describe the different causes any better than Wikipedia does, so if you want to learn more, you should check out their [article about color blindness](#).

Dichromacy



Original Color
D7C8BF

Protanopia
D1CAC0

Deuteranopia
E2C4C0

Trichromacy



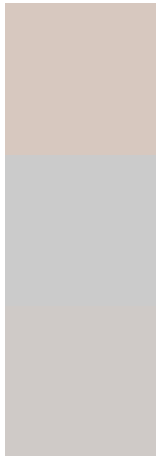
Original Color
D7C8BF

Protanomaly
D3C9C0

Deuteranomaly
DEC5C0

Tritanomaly
D9C6CC

Monochromacy



Original Color
D7C8BF

Achromatopsia
CBCBCB

Achromatomaly
CFCAC7

CSS Examples

Text

The CSS property to change the color of the text to Hex D7C8BF is called "color". The color property can be set on classes, ids or directly on the HTML element.

This example shows how text in the color #D7C8BF looks like.

```
.text, #text, p{  
    color:#D7C8BF  
}
```

If you want to add a text shadow in that color use the text-shadow property, you can generate a text shadow directly with our [CSS Text Shadow Generator](#).

Here you see how black text with a 4 pixel #D7C8BF colored shadow looks like.

```
.shadow{ text-shadow: 4px 4px 2px #D7C8BF  
}
```

Border

The CSS property to change the border of an element to Hex D7C8BF is called "border". The border property can be set on classes, ids or directly on the HTML element.

This example shows the color as border, it can be applied via the CSS property "border" or "border-color".

```
.border, #border, table{ border:4px solid  
#D7C8BF }
```

If only the border color should be changed use the property `border-color`.

```
.border{ border-color:#D7C8BF }
```

If you want to add a box shadow in that color use:

Here you see how a box with a 4 pixel #D7C8BF colored shadow looks like.

```
.boxshadow{ -moz-box-shadow:4px 4px 4px  
4px #D7C8BF; -webkit-box-shadow:4px 4px  
4px 4px #D7C8BF; box-shadow:4px 4px 4px  
4px #D7C8BF }
```

Background

The CSS property to change the background color of an element to Hex D7C8BF is called "background". The background property can be set on classes, ids or directly on the HTML element.

```
.background, #background, body{  
background:#D7C8BF }
```

If only the background color should be changed can be used:

```
.background{ background-color:#D7C8BF }
```

This example shows the color as background, it is applied via the CSS property "background".

To optimize and compress your CSS code, you can use our [online CSS compressor and optimizer](#) based on csstidy. If you want to create a linear or radial gradient as background or border, check our [CSS Gradient Generator](#).

Hey! You found this booklet interesting? Support Converting Colors with the new Membership Option!

The pro membership hides all ads, plus gives you double the colors in the color bucket, and more awesome pro features!

[Learn more, Memberships starting at \\$2.50/m!](#)

**Follow me
on Twitter!**

@ConvertingColor